

Office space  
available



## 1808 Front Street Slidell, LA 70458

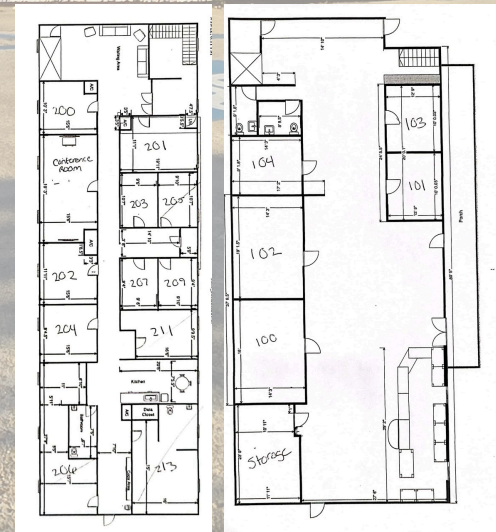
Executive Office Space

Historic Building with all new construction, across the street from walkable restaurants, near Heritage Park, train station and coffee. Located on Mardi Gras and St. Patrick's Day parade routes. Walkable to Olde Town Slidell. Rents range from \$750 to \$1350 per month plus CAM charge.

### Features

- Class 1A Building
- Elevator access
- Fiber internet
- Conference Room
- Breakroom
- Sirincci Discount
- Ad display in cafe/ directory signage
- High-speed WiFi, enterprise-grade infrastructure
- FOB accessibility and security cameras
- Copier, mailbox, and 24/7 access
- Off-street parking
- Multi-year lease discounts
- Varying lease rates and space opportunities

**Foot traffic at an average rate of 300 people per day and seasonal events that draw even more**



**Call for an appointment:  
Stacey Dausat, Sales Contact**

📞 504-281-2232 office  
504-220-6484 cell  
📍 1808 Front Street, Slidell, LA

**Weichert**  
REALTORS®

Loescher Properties