

YOUR NAME HERE

BERINGER  
MEDICAL GROUP



# FOR SALE

■ 616 SE Central Pkwy

Stuart, FL 34994

## PROPERTY OVERVIEW

1,805± SF professional office condo featuring a large reception area, front office/meeting room with a private restroom, a conference room, and four private offices. There is also a large training/multipurpose room with kitchenette that offers flexibility for meetings, workshops, or staff collaboration. Ideal for law firms, CPA practices, medical professionals, and general office users seeking a polished and efficient workspace.

## OFFERING SUMMARY

Unit Size: 1,805 SF  
Zoning: BMU - Business Mixed Use (City of Stuart)



JAIME CHAMBERLIN  
ELFERT, CCIM, MBA  
VICE PRESIDENT, BROKER  
Mobile 772.486.3330  
jaime@slccommercial.com

772.220.4096 | slccommercial.com

SALE PRICE

\$450,000.00



SLC Commercial  
Realty & Development

The information contained herein has been obtained from sources believed to be reliable, but no warranty or representation, expressed or implied, is made. All sizes and dimensions are approximate. Any prospective buyer should exercise prudence and verify independently all significant data and property information. This is NOT an offer of sub-agency or co-brokerage.

# Property Details & Highlights

616 SE CENTRAL PARKWAY

FOR SALE

Property Address: 616 SE Central Pkwy, Stuart, FL 34994

Property Type: Office

APN: 093841029000000400

Zoning: BMU - Business Mixed Use (City of Stuart)

Year Built: 2004

Condo Fees: \$1,218.38 per quarter

## LOCATION OVERVIEW

Central Parkway is a convenient business corridor in Stuart, located just minutes from Downtown Stuart and its restaurants, shops, and waterfront attractions. It also offers quick access to Jensen Beach and Palm City, only a short drive away, and provides easy connectivity to I-95 for regional travel. Its central location makes it ideal for professional and medical office users.



## SALE HIGHLIGHTS

- Front and rear parking
- Building signage available
- Walk-up entry
- Convenient and central location

# Additional Photos

616 SE CENTRAL PARKWAY

FOR SALE



# Location Map

616 SE CENTRAL PARKWAY

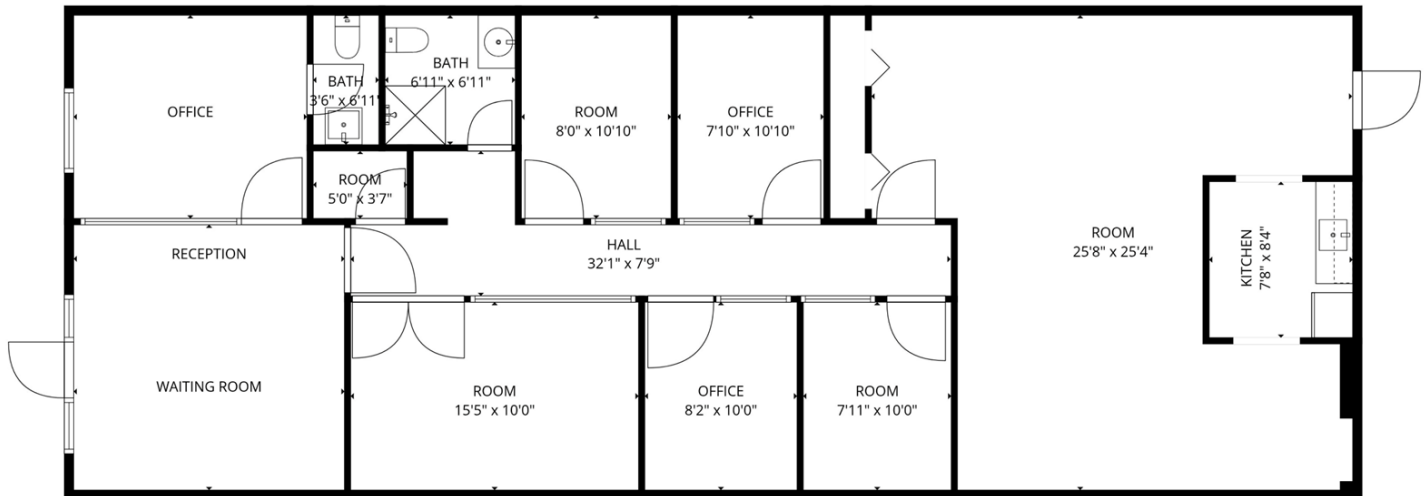
FOR SALE



# Floor Plans

616 SE CENTRAL PARKWAY

FOR SALE



616 SE CENTRAL PARKWAY

STUART, FL

\*approximate measurements

5



SLC Commercial  
Realty & Development

# Disclaimer

616 SE CENTRAL PARKWAY

FOR SALE

This presentation package has been prepared by the company representing the property for informational purposes only and does not purport to contain all information necessary to reach a purchase decision.

The information herein has been given by the Owner or other sources believed to be reliable, but it has not necessarily been independently verified by the Company representing the property and neither its accuracy nor its completeness is guaranteed.

This information is subject to errors, omissions, changes, prior sale or withdrawal without notice by the Company representing the property and does not constitute a recommendation, endorsement or advice as to the value for the purchase of any property. Each prospective lessee or purchaser is to rely upon his/her own investigation, evaluation and judgment as to the advisability of leasing or purchasing the property.

Furthermore, any financial information and calculations presented in this analysis are believed to be accurate, but are not guaranteed and are intended for the purposes of projection and analysis only. The user of this financial information contained herein should consult a tax specialist concerning his/her particular circumstances before making any investment.