

1510 YORK

DENVER.CO 80206

Second/Third Floors | FOR LEASE

734-3,249 SF



THE JOHN HAND BUILDING

Property Overview

- Within walking distance of countless restaurants, bars, retail amenities on historic Colfax Ave. (Walker's Paradise: 93/100)
- Includes exterior open area and kitchen



Bldg Size **9,819 RSF**

Availability **743-3,249 RSF**

Year Built **1925**

Walk Score **93/100**



Lease Rate:

\$19.00-20.00/SF MG

(Tenant pays their own electricity and janitorial)

NAI Shames Makovsky

Ana Sandomire

303 565 3029

asandomire@shamesmakovsky.com

Peter Knisely

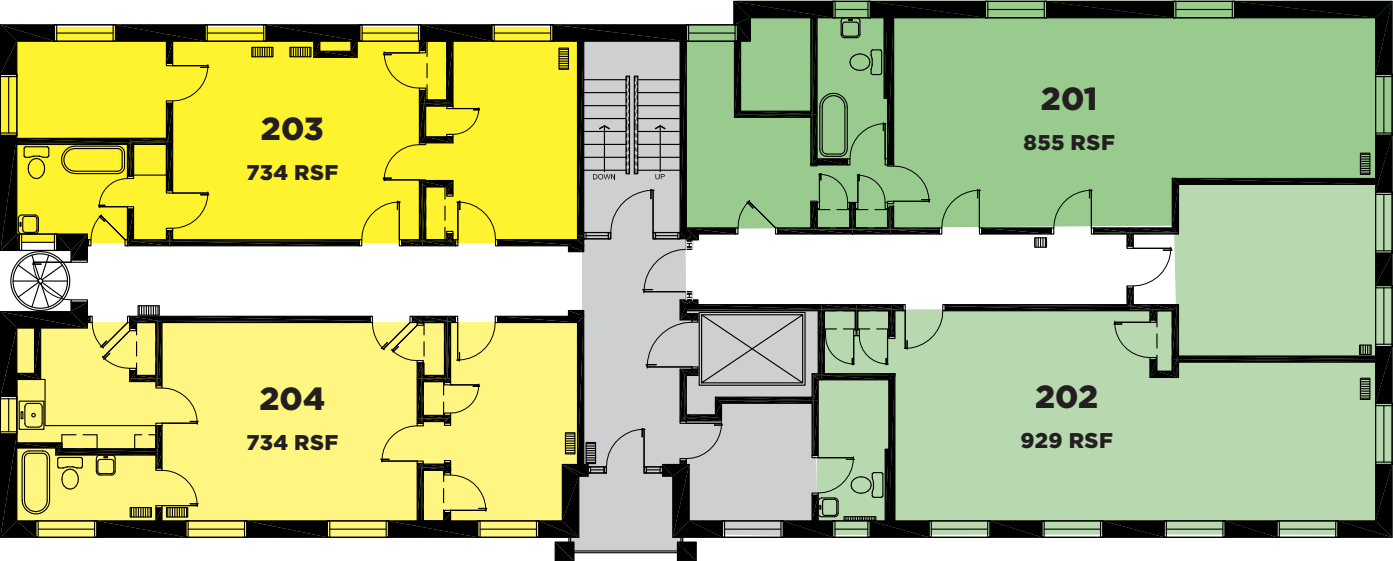
720 881 7534

pknisely@shamesmakovsky.com

SECOND FLOOR

SECOND FLOOR CAN BE LEASED AS:

4 INDIVIDUAL SUITES or 2 OFFICE HALVES or FULL FLOOR



**203/204 Contiguous Unit
1,468 RSF**

- Two private offices
- Exterior conference room
- Open area
- Kitchen

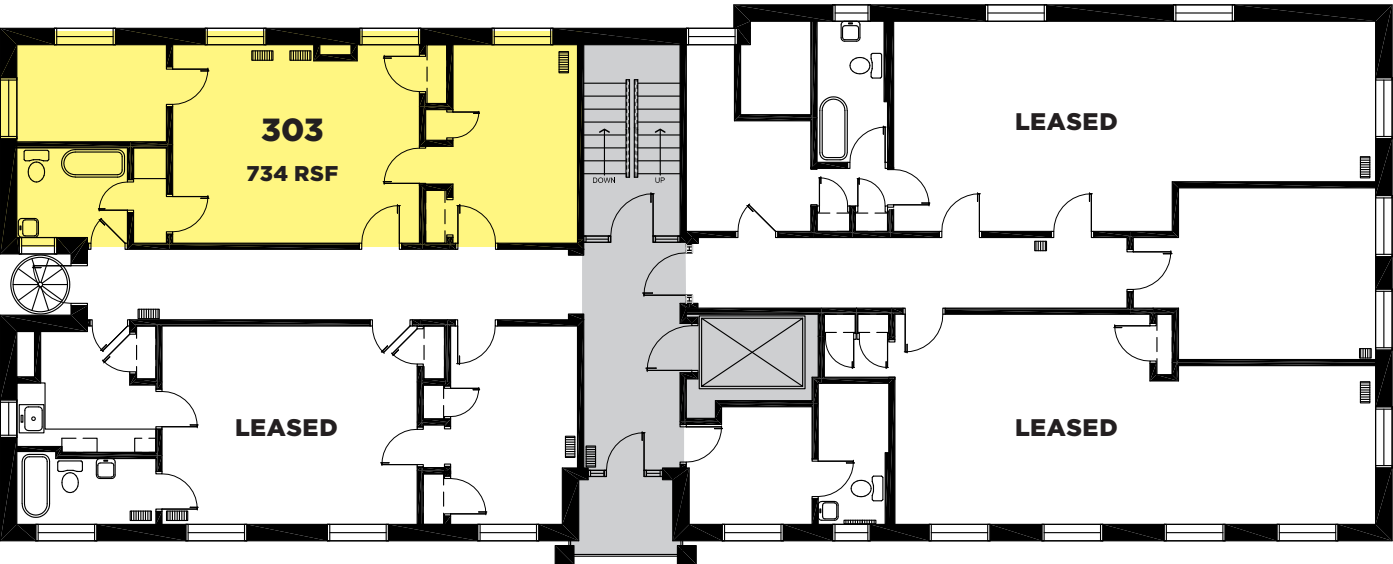
**201/202 Contiguous Unit
1,782 RSF**

- Two private offices
- Exterior conference room
- Open area

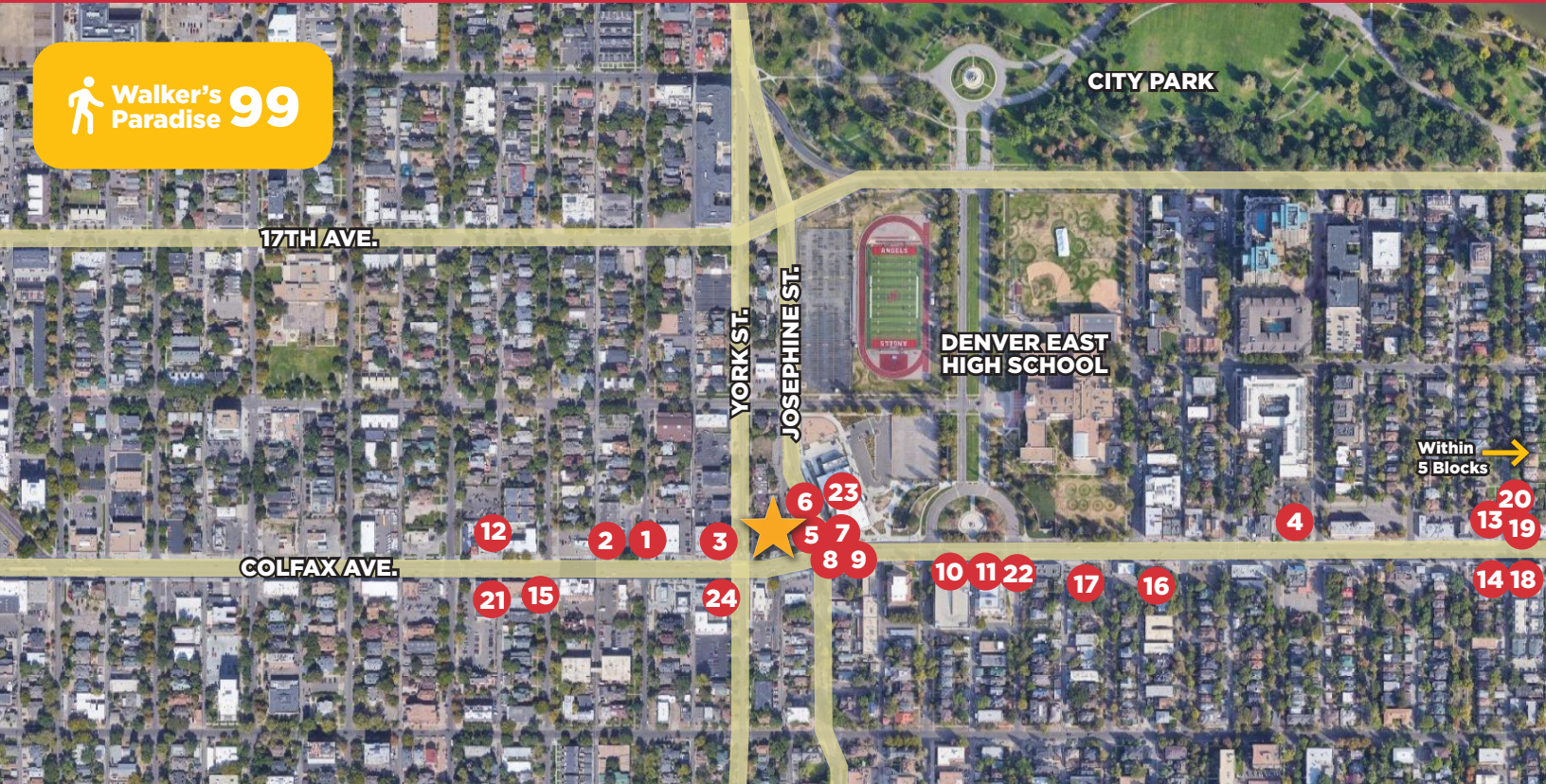
Full Floor - 3,249 RSF

- Full floor consisting of four exterior offices
- Exterior conference room
- Open area and kitchen
- Patio

THIRD FLOOR



Suite 303 - 734 RSF



- | | | | |
|----|-------------------|----|--------------------------|
| 1 | Chuey Fu's | 14 | Mezcal |
| 2 | Ya Yahs | 15 | Pete's Kitchen |
| 3 | Sap Sua | 16 | Omonia Bakery |
| 4 | Starbucks | 17 | Little Beast Street Food |
| 5 | The DNVR Bar | 18 | Tommy's Thai |
| 6 | Rolling Pin Pizza | 19 | Chick-Fil-A |
| 7 | Okinawa | 20 | Sprouts Market |
| 8 | Jimmy John's | 21 | Walgreens |
| 9 | Subway | 22 | Bar Max |
| 10 | Chipotle | 23 | Carla Madison Rec Center |
| 12 | Illegal Pete's | 24 | Savageau Coffee |
| 13 | Atomic Cowboy | | |



NAI Shames Makovsky

NO WARRANTY OR REPRESENTATION, EXPRESS OR IMPLIED, IS MADE AS TO THE ACCURACY OF THE INFORMATION CONTAINED HEREIN, AND THE SAME IS SUBMITTED SUBJECT TO ERRORS, OMISSIONS, CHANGE OF PRICE, RENTAL OR OTHER CONDITIONS, PRIOR SALE, LEASE OR FINANCING, OR WITHDRAWAL WITHOUT NOTICE, AND OF ANY SPECIAL LISTING CONDITIONS IMPOSED BY OUR PRINCIPALS NO WARRANTIES OR REPRESENTATIONS ARE MADE AS TO THE CONDITION OF THE PROPERTY OR ANY HAZARDS CONTAINED THEREIN ARE ANY TO BE IMPLIED.

Ana Sandomire

303 565 3029

asandomire@shamesmakovsky.com

Peter Knisely

720 881 7534

pknisely@shamesmakovsky.com