

# 519 POTRERO AVE

FOR LEASE | STAND ALONE FLEX BUILDING/SHOWROOM

**TCP**  
TOUCHSTONE  
COMMERCIAL PARTNERS



**ZACH HAUPERT**

415.812.1219 | [zhaupert@tcpre.com](mailto:zhaupert@tcpre.com)

**ETHAN MANN**

415.990.9127 | [ethan@tcpre.com](mailto:ethan@tcpre.com)

**MICHAEL SANBERG**

415.697.6088 | [msanberg@tcpre.com](mailto:msanberg@tcpre.com)

**GEORGE FARLEY**

415.994.5767 | [george@tcpre.com](mailto:george@tcpre.com)

[WWW.TCPRE.COM](http://WWW.TCPRE.COM)

### PROPERTY SUMMARY

#### ADDRESS

519 Potrero Avenue, San Francisco, CA 94110

#### AVAILABLE SPACE

+/- 3,766 Square Feet

#### RENTAL RATE

\$15,500 / Month, Industrial Gross

#### AVAILABLE

Immediately

### BUILDING ATTRIBUTES

- + Abundant Natural Light & Skylights Throughout
- + Two (2) Modern Steel-and-Glass Meeting Rooms
- + Move-In Ready Condition
- + Potential Event or Client Presentation Space
- + Polished Concrete Floors Throughout
- + Parking in Front of Building
- + Prime Potrero Hill Location w/ Close Proximity to MUNI & Public Transportation





### LOCATION OVERVIEW

Desirable Potrero Hill location, walkable to nearby amenities and to surrounding neighborhoods.



**16 MIN** to Mission District  
**20 MIN** to 16th Bart Station  
**28 MIN** to CalTrain Station



**07 MIN** to Civic Center  
**10 MIN** to SOMA  
**16 MIN** to Financial District

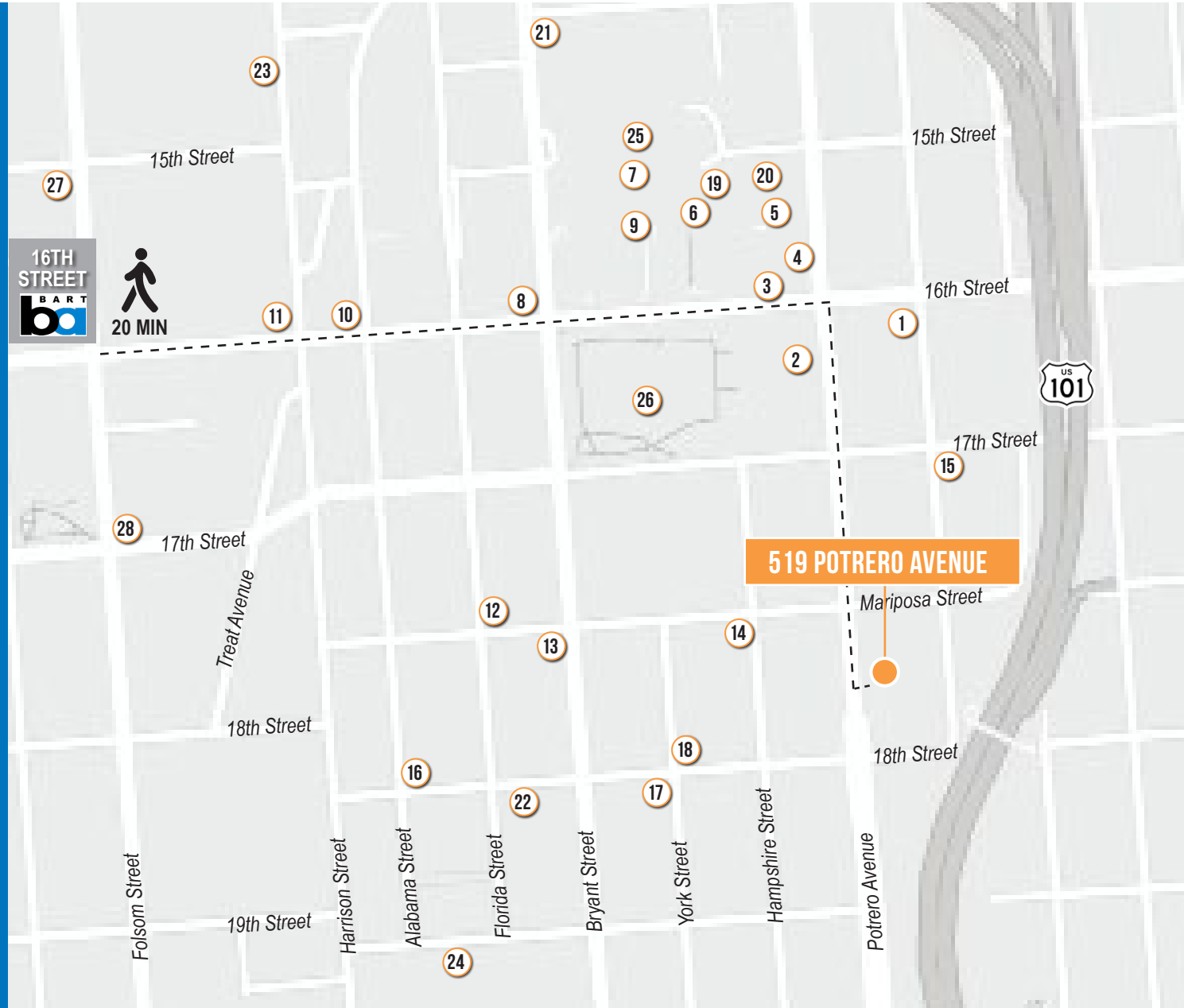


**03 MIN** to 101 On-Ramp  
**07 MIN** to 80 On-Ramp  
**08 MIN** to 280 On-Ramp



### NEARBY AMENITIES

- 1 Il Pirata
- 2 McDonald's
- 3 Rotisserie Roast
- 4 Smashburger
- 5 TOGO's Sandwiches
- 6 Jamba
- 7 Peet's Coffee
- 8 Jade Cafe
- 9 Potrero Center
- 10 Dandelion Chocolate Factory
- 11 Jolene's Bar and Restaurant
- 12 Ernest
- 13 Starbucks
- 14 The Morris
- 15 Two Son's Sandwiches
- 16 Tartine Manufactory
- 17 Bobo's Bistro
- 18 Charles Chocolates
- 19 Noah's NY Bagels
- 20 Ross Dress for Less
- 21 U-Haul Storage of San Francisco
- 22 Osito
- 23 Baklavastory
- 24 Farmhouse Kitchen
- 25 Safeway
- 26 Franklin Square
- 27 The Wooden Nickel
- 28 Rite Spot Cafe





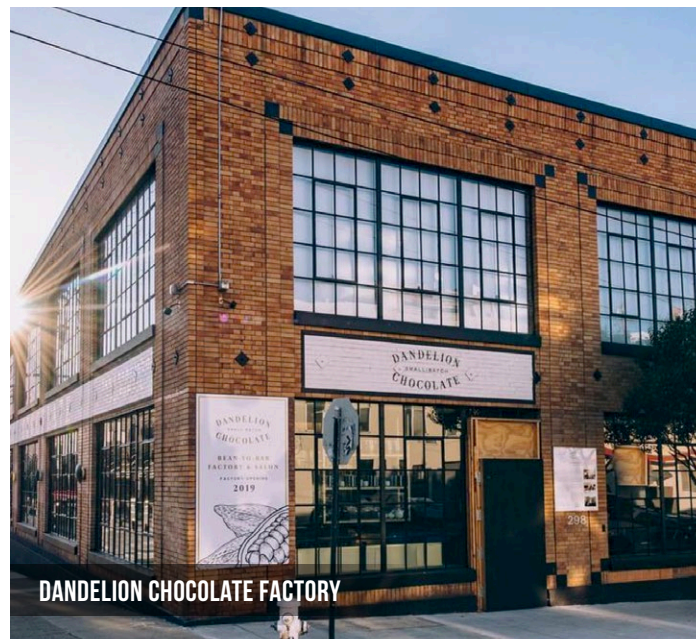
TARTINE MANUFACTORY



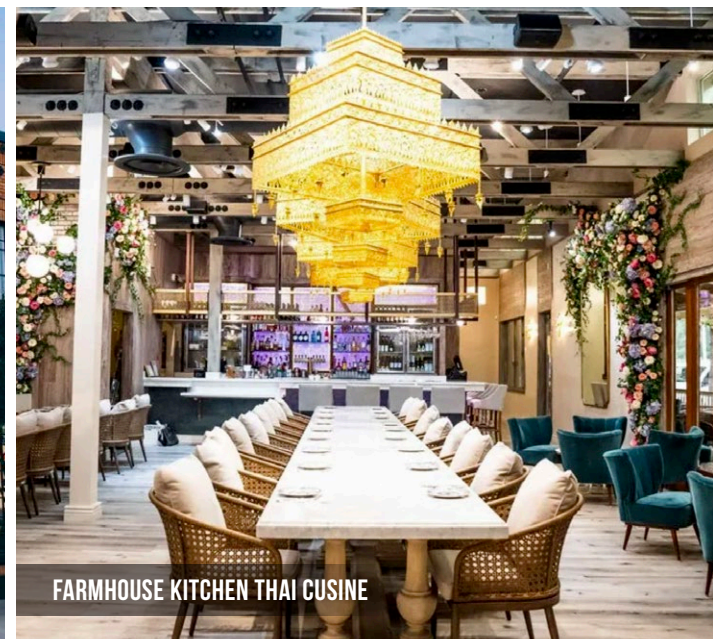
ERNEST



STABLE CAFE



DANDELION CHOCOLATE FACTORY



FARMHOUSE KITCHEN THAI CUISINE

**519** POTRERO  
AVE



Corp. Lic. 01112906  
www.tcppe.com

**ZACH HAUPERT** DRE # 01822907  
415.812.1219 | [zhaupert@tcppe.com](mailto:zhaupert@tcppe.com)

**ETHAN MANN** DRE # 02223262  
415.990.9127 | [ethan@tcppe.com](mailto:ethan@tcppe.com)

**MICHAEL SANBERG** DRE # 01930041  
415.697.6088 | [msanberg@tcppe.com](mailto:msanberg@tcppe.com)

**GEORGE FARLEY** DRE # 02233755  
415.994.5767 | [george@tcppe.com](mailto:george@tcppe.com)

This document has been prepared by Touchstone Commercial Partners for advertising and general information only. Touchstone Commercial Partners makes no guarantees, representations or warranties of any kind, expressed or implied, regarding the information including, but not limited to, warranties of content, accuracy and reliability. Any interested party should undertake their own inquiries as to the accuracy of the information. Touchstone Commercial Partners excludes unequivocally all inferred or implied terms, conditions and warranties arising out of this document and excludes all liability for loss and damages arising there from. This publication is the copyrighted property of Touchstone Commercial Partners and/or its licensor(s). ©2026. All rights reserved.