



684 W. Boughton Rd. Bolingbrook, IL

Office Space Available for Lease

Christine Simek - 630.473.5070 - [Christine@XroadsAdvisors.com](mailto:Christine@XroadsAdvisors.com)



[www.xroadsadvisors.com](http://www.xroadsadvisors.com)



## Property Description:

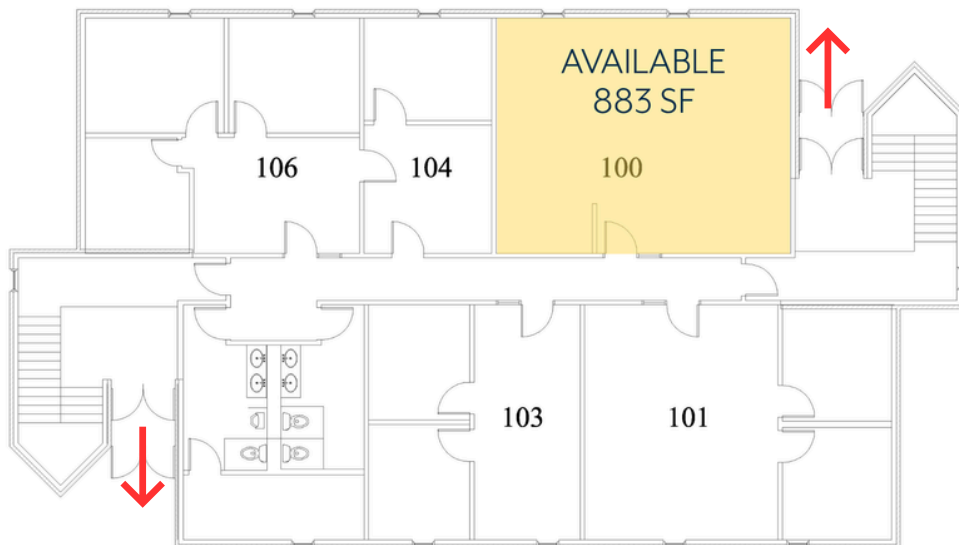
Conveniently located on Boughton Road in Bolingbrook, this office property is surrounded by a wide range of amenities that support today's modern businesses. The location combines urban accessibility with suburban charm. Each suite offers a private entrance and generous parking for both tenants and visitors. Set within a park-like environment, the property provides a peaceful and inviting atmosphere. Monument signage is available, providing outstanding visibility for your business.



## Availability:

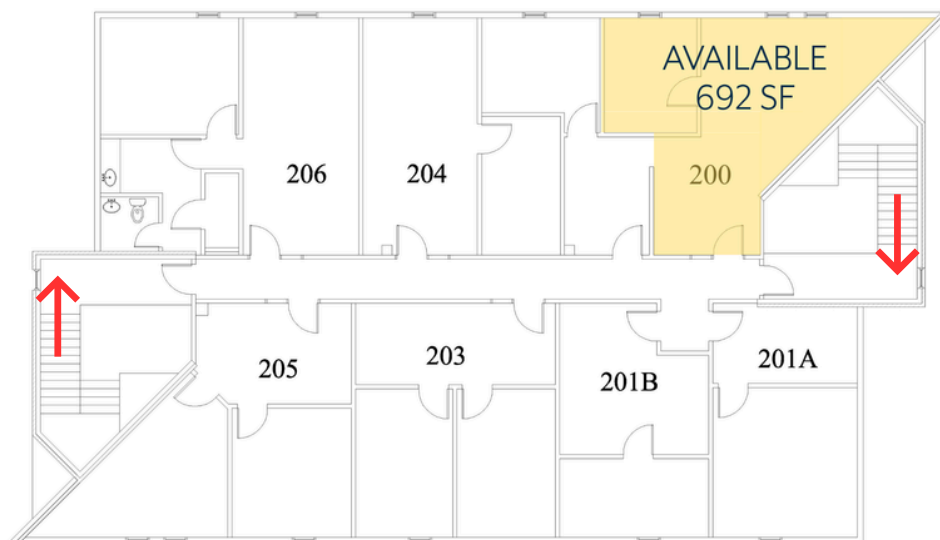
### Suite 100: 883 SF

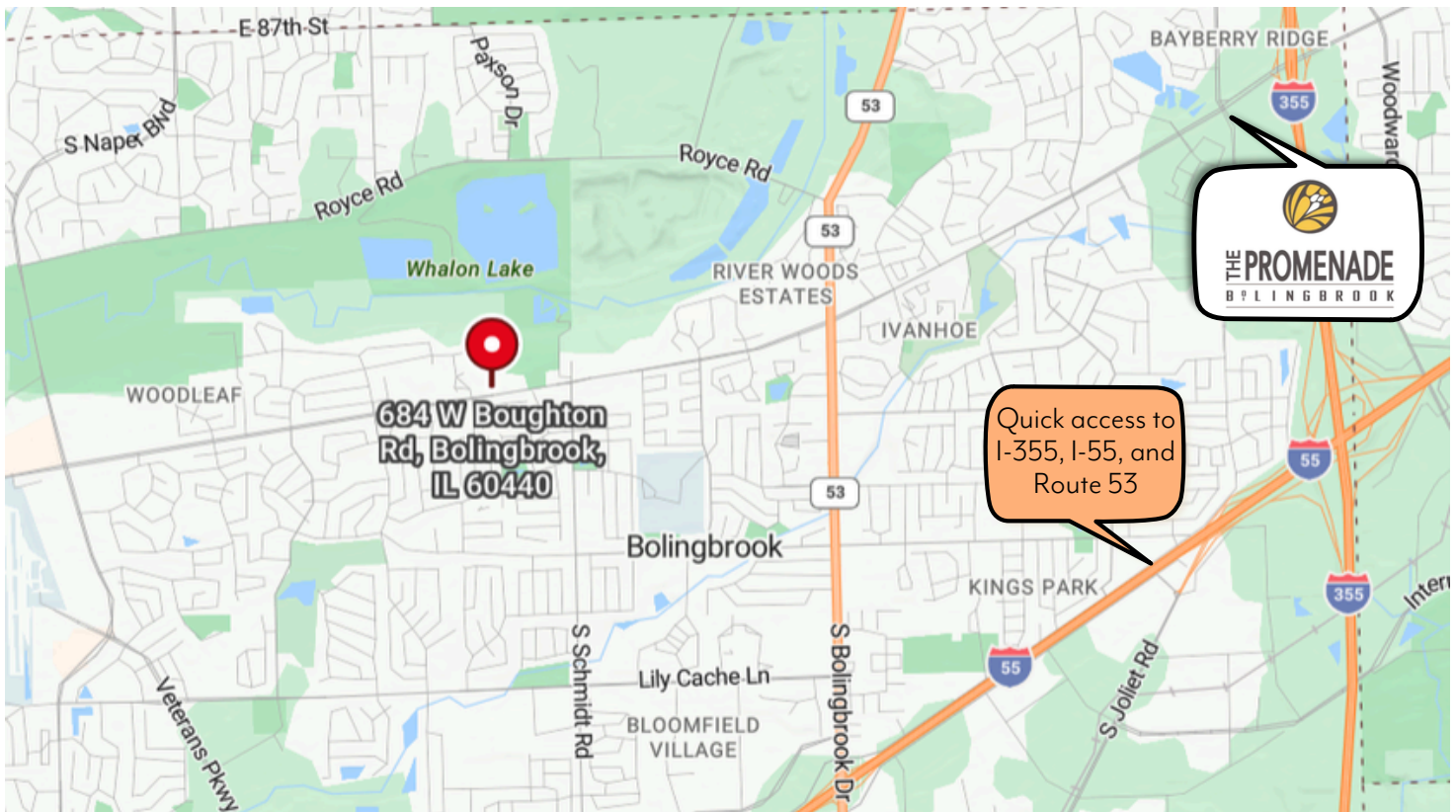
Suite 100 is an open floor plan office space on the first level. Located near the south building entrance. Ample parking available for clients and tenants.



# Suite 200B: 692 SF

Suite 200B is located on the second floor immediately near the south stairwell. 692 SF of office space with a reception area, open space for office or waiting area, and a private office.





Close proximity to I-355, I-55, I-88, and Route 53.

Minutes from Bolingbrook Promenade

Strong area demographics

Monument signage

Located among well known company headquarters that draw clients to the area

Surrounded by a serene and welcoming park-like environment

Christine Simek - 630.473.5070 - [Christine@XroadsAdvisors.com](mailto:Christine@XroadsAdvisors.com)



[www.xroadsadvisors.com](http://www.xroadsadvisors.com)

