

**FOR LEASE**

**STEPHANIE FARMER** +1 479 845 3022 | [sfarmer@sagepartners.com](mailto:sfarmer@sagepartners.com)

**MARSHALL SAVIERS** +1 479 845 3042 | [mtsaviors@sagepartners.com](mailto:mtsaviors@sagepartners.com)



**CURVE** CORPORATE  
CENTER

**A PREMIER CORPORATE DESTINATION IN BENTONVILLE**

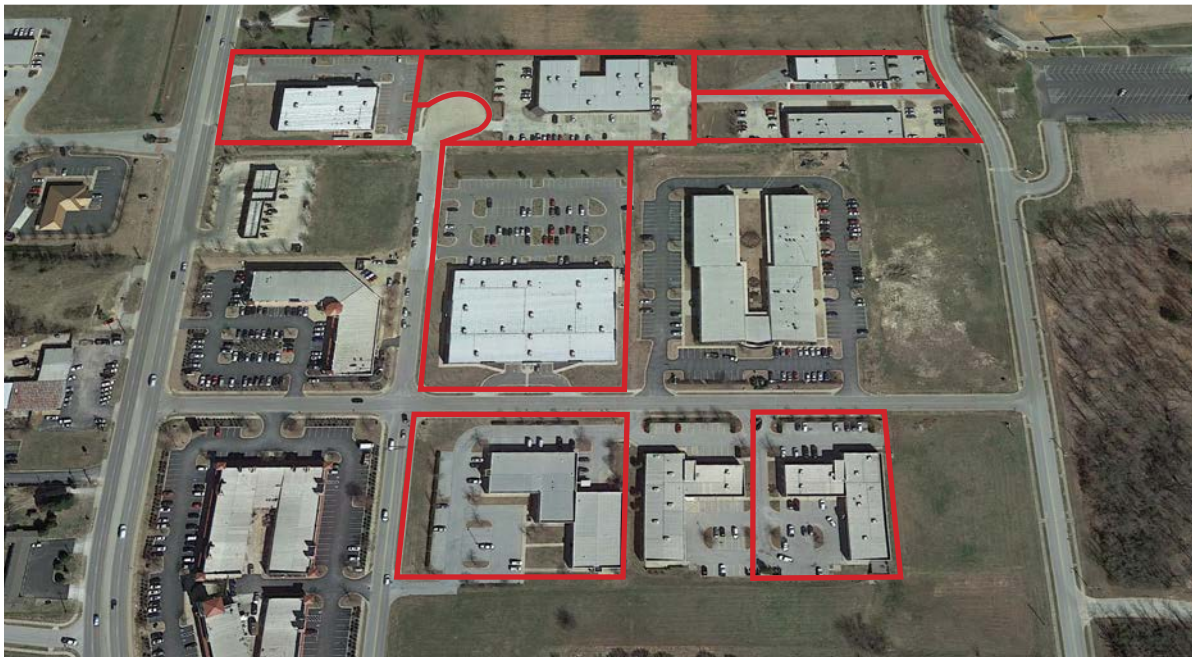
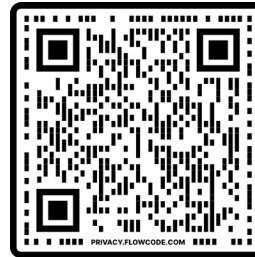


5100 W JB Hunt Drive, Rogers, AR 72758 | 479 845 3000 | Independently Owned and Operated / A Member of the Cushman & Wakefield Alliance

# ABOUT US

Curve Corporate Center is a seven-building office park in Bentonville, minutes from the new Walmart Home Office and Sam's Club HQ. Set in the Fayetteville-Springdale-Rogers metro, it is home to tenants like Exxon, Spectrum Brands, Coleman (Newell), and Silliker (Merieux). The property features flexible suites, modern layouts, and abundant natural light with easy access to I-49.

Turnkey spaces include open designs, private offices, conference areas, and outdoor seating. Select suites also offer kitchens with commercial vent hoods, creating a ready-to-use environment for businesses to thrive in Northwest Arkansas.



62,055

POPULATION

2.4

AVERAGE HOUSEHOLD SIZE

34.2

MEDIAN AGE

\$102,767

MEDIAN HOUSEHOLD INCOME

3,190

TOTAL BUSINESSES

71,516

TOTAL EMPLOYEES

3 MILE RADIUS ESRI BUSINESS ANALYST



CURVE COPORATE CENTER  
TENANTS

---



**CORE STATES**

GROUP

**ExxonMobil**

**GRATSY** 



**Mérieux**  
NutriSciences

Better Food. Better Health. Better World.



**SOO**  
CHURCH

**Spectrum**  
Brands

# DRIVE TIMES

- 5 Miles to Walmart Global HQ
- 3 Miles to Sam's Club Home Office
- 1 Mile to Bentonville Municipal Airport
- Many restaurants within 3 Mile radius



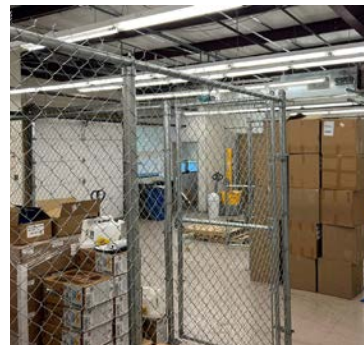
# AVAILABLE SPACES



\*floor plan depicted is estimated and may vary from actual conditions

## 3401 SE MACY RD

- 7,119 ± SF available
- Lease Rate: \$22.00/RSF NNN
- Walton signage opportunity
- Roll up door & Shipping receiving area
- Less than 2 miles from I-49
- Located near SAM'S Club Headquarters and Walmart Home Office



# AVAILABLE SPACES



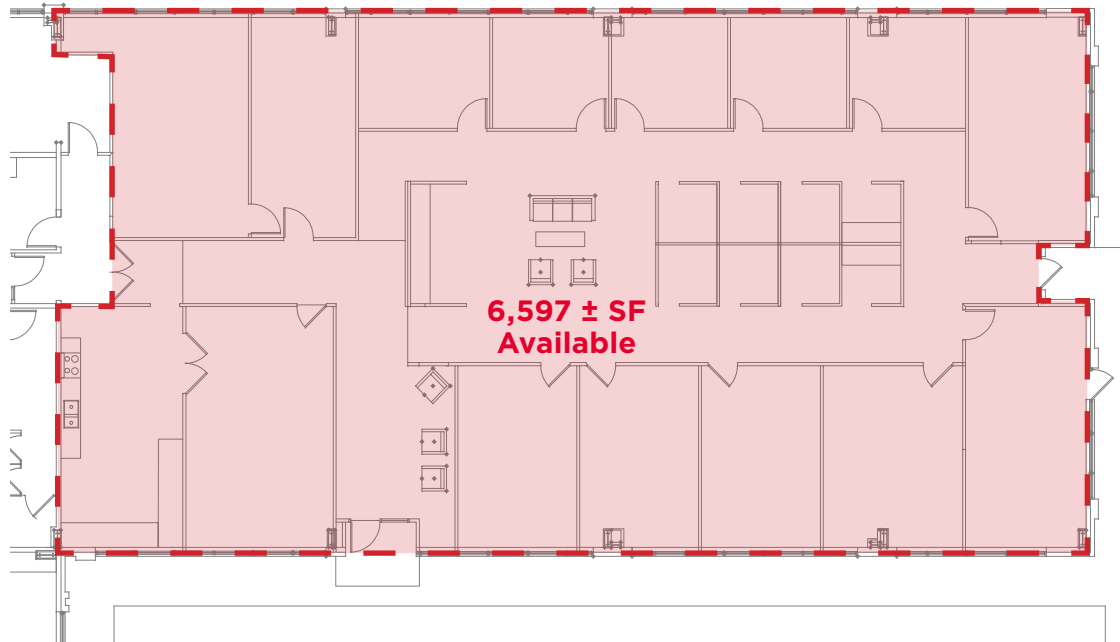
\*floor plan depicted is estimated and may vary from actual conditions

## 3101 SE MACY RD

- Bentonville office space
- **7,823 ± SF available**
- Lease Rate: **\$22.00/RSF NNN**
- Access to shared outdoor space
- Open concept with private offices, conference areas, and break room
- Less than 2 miles from I-49
- Located near SAM'S Club Headquarters and Walmart Home Office



# AVAILABLE SPACES



\*floor plan depicted is estimated and may vary from actual conditions

## 212 SE 34TH ST

- Suite 12: **6,597 ± SF**  
(Available 11/01/2025)
- Lease Rate: **\$22.00/RSF NNN**
- Suite offers a kitchen with a commercial vent hood
- Direct access to outdoor patio/seating area
- Open concept with private offices, conference areas, and ample natural light



# NORTHWEST ARKANSAS - MOUNTAIN HAVEN WITH INDUSTRY GIANTS

The Fayetteville-Bentonville-Rogers-Springdale MSA, commonly referred to as Northwest Arkansas, is made up of 3 counties, Benton, Washington, and Madison. The region is home to the world's largest retailer, and #1 on the 2023 Fortune 500 list, Walmart. The MSA is experiencing rapid growth. Northwest Arkansas is the fastest growing multifamily market, by percentage, in the US. The metro is on pace to break into the nation's top 100 largest MSA's with 1M+ residents expected by 2040.



**576,403**

MSA Population 2023

**2.5%**

Unemployment Rate 2023

**93%**

Cost Of Business Index

**91.8%**

Cost Of Living Index

Source: Northwest Arkansas Council 2024

## Northwest Arkansas is...

### Booming

36 people moving to  
NWA per day

### #40 Best Places For Business

Forbes - 2023

### #10 Best Place to Live in the U.S.

U.S. News & World Report - 2023

### Dynamic

U.S. News & World Report's #28  
Most Dynamic Metros

### University of Arkansas Supply Chain Ranked #1 In The Nation

Northwest Arkansas Council - 2024

### 8 NWA High Schools Rank Among Top 10% In The Nation

Northwest Arkansas Council - 2024

### Up-Scale

Per capita income 14% higher  
than the national average

### Home to 3 Fortune 500 Companies

Northwest Arkansas Council - 2024

### #7 Best Performing Cities

Milken Institute - 2024

## WALMART - #1 CORPORATION IN US

Since its inception, Walmart has maintained its constant presence at its headquarters in Bentonville with multiple corporate expansions and countless philanthropic efforts. The Walton family still calls Bentonville home and has invested hundreds of millions of dollars into school, arts, infrastructure, and various community projects through the Walton Family Foundation.



### 300+ Acre

New Corporate Campus

### 14,000 2 Miles

Corporate jobs in Bentonville

New Corporate Campus from town square

Walmart's New Corporate Headquarters



# Walmart

## Walmart Supplier Network

All 5,500 Walmart suppliers have a presence in NW Arkansas, and 1,400 maintain offices in NW Arkansas contributing thousands of additional jobs to the local economy.



## AMENITY RICH REGION

In addition to being the home of three Fortune 500 companies (Walmart, Tyson, J.B. Hunt), Northwest Arkansas is filled with community amenities that make the region an exceptional place to call home.

### 1 CRYSTAL BRIDGES MUSEUM

4.7M Visitors in Eight Years

### 2 WALMART CORPORATE CAMPUS

300+ Acre New Corporate Development

### 3 PINNACLE HILLS

152 Acre, Class "A" Shopping Center

### 4 WALMART AMP

Newly Expanded 15,000-Seat Amphitheater

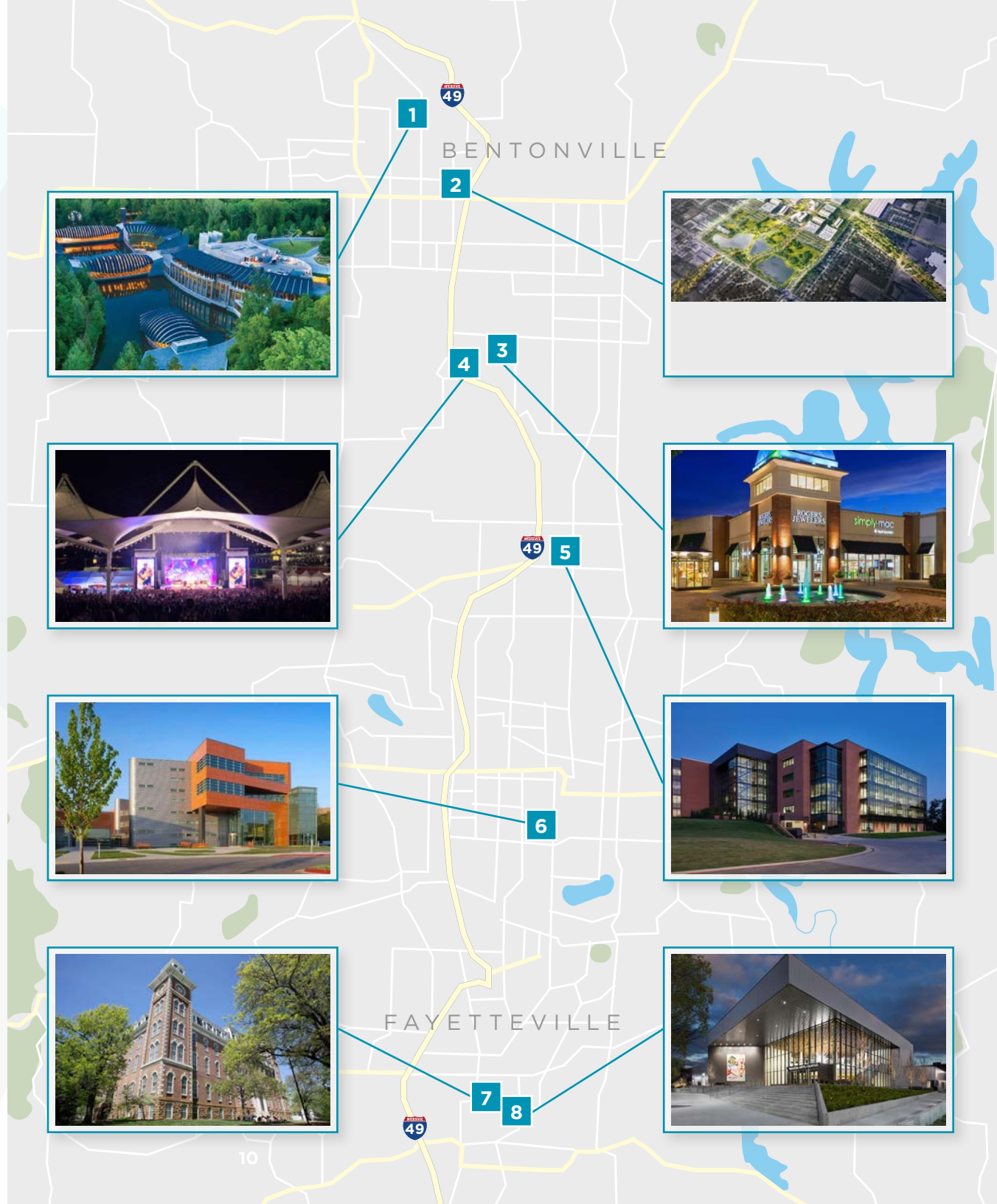
### 5 JB HUNT CORPORATE HQ

### 6 TYSON FOODS CORPORATE HQ

### 7 UNIVERSITY OF ARKANSAS

32,000+ Combined Jobs & Students

### 8 WALTON ARTS CENTER



**FOR LEASE**

# CURVE

CORPORATE  
CENTER

**FOR MORE INFORMATION, PLEASE CONTACT:**

**STEPHANIE FARMER**

+1 479 845 3022

[sfarmer@sagepartners.com](mailto:sfarmer@sagepartners.com)

**MARSHALL SAVIERS**

+1 479 845 3042

[mtsaviors@sagepartners.com](mailto:mtsaviors@sagepartners.com)



©2025 Cushman & Wakefield | Sage Partners. All rights reserved. This presentation is for informational purposes only. Any use, reproduction, or redistribution of its contents is prohibited without prior written consent from Cushman & Wakefield | Sage Partners. The views expressed herein are those of the author and do not necessarily reflect those of Cushman & Wakefield. This presentation is not intended as the basis for any offer or inducement to enter into a contract. While reasonable efforts have been made to ensure the accuracy of the information, including floor plan measurements, the floor plan depicted is estimated and may vary from actual conditions. NO WARRANTY, EXPRESS OR IMPLIED, IS MADE REGARDING THE ACCURACY OF THE INFORMATION, AND CUSHMAN & WAKEFIELD | SAGE PARTNERS IS NOT OBLIGATED TO CORRECT ANY ERRORS OR INACCURACIES.