



**Investment
Properties
Corporation**



F O R L E A S E

KINGS LAKE SQUARE

Publix-anchored center off of Davis Blvd in East Naples

4810-4890 Davis Blvd | Naples, FL 34104



Join Publix, Starbucks, Tacos & Tequila, and other key retailers at Kings Lake Square. Serving the enormous community of Kings Lake and the rapidly-growing area of East Naples.



CONTACT **(239) 261-3400** John Cheffy, ext. 182, john@ipcnaples.com

Investment Properties Corporation of Naples
3838 Tamiami Trail North Suite 402
Naples Florida 34103-3586

Tel: 239-261-3400 Fax: 249-261-7579 www.ipcnaples.com

Licensed Real Estate Broker

The statement and figures presented herein, while not guaranteed, are secured from sources we believe authoritative. Subject to prior sale, lease, withdrawal and price change without notice.



KINGS LAKE SQUARE

4810-4890 Davis Blvd | Naples, FL 34104

LEASE INFORMATION

SUITE	SF	PSF/YR	EST. 2026 CAM	AVAILABILITY
B109	2,271 SF	Call For Details	\$7.97	IMMEDIATELY

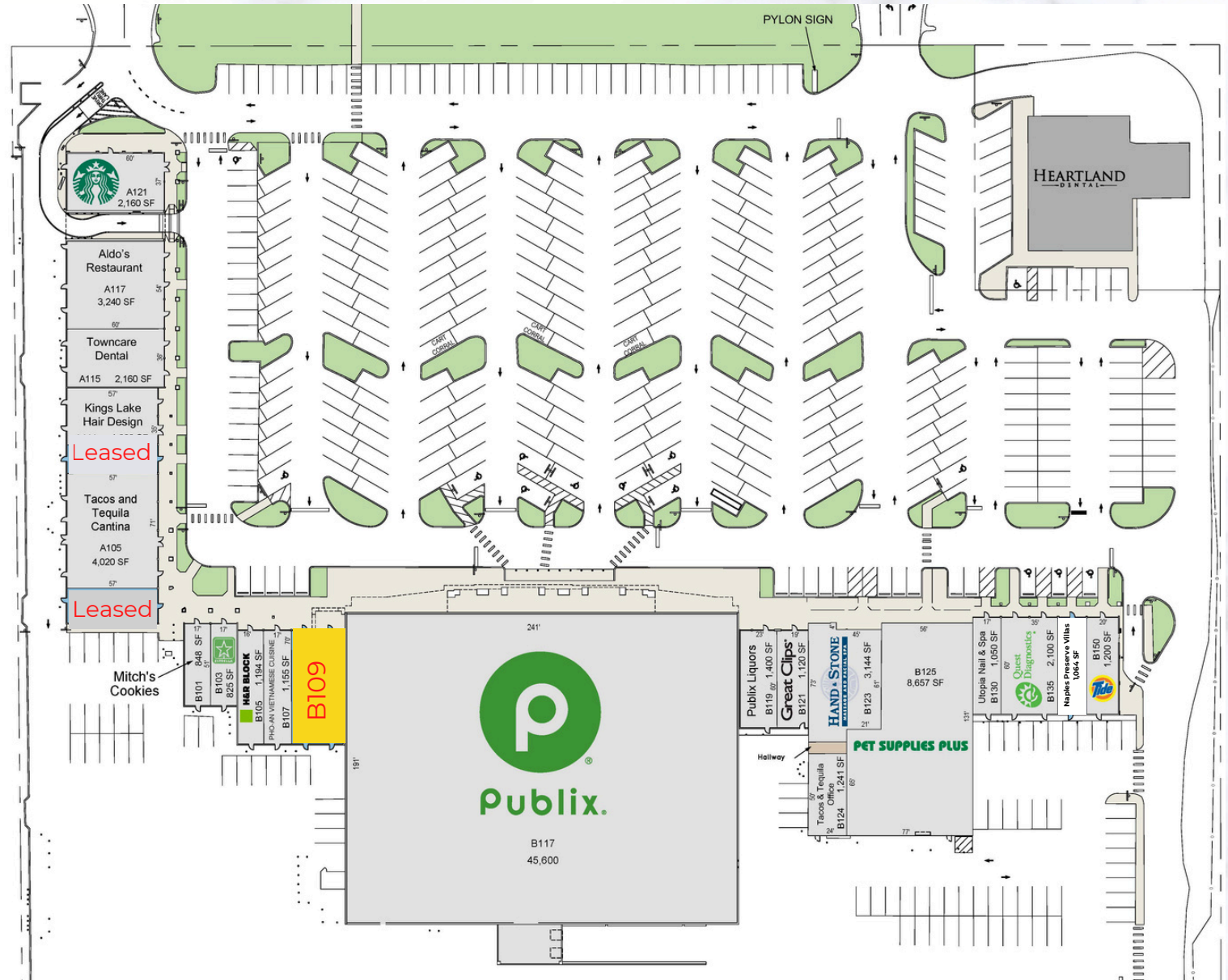


Investment Properties Corporation of Naples
 3838 Tamiami Trail North Suite 402
 Naples Florida 34103-3586

Tel: 239-261-3400 Fax: 249-261-7579 www.ipcnaples.com

Licensed Real Estate Broker

The statement and figures presented herein, while not guaranteed, are secured from sources we believe authoritative. Subject to prior sale, lease, withdrawal and price change without notice.



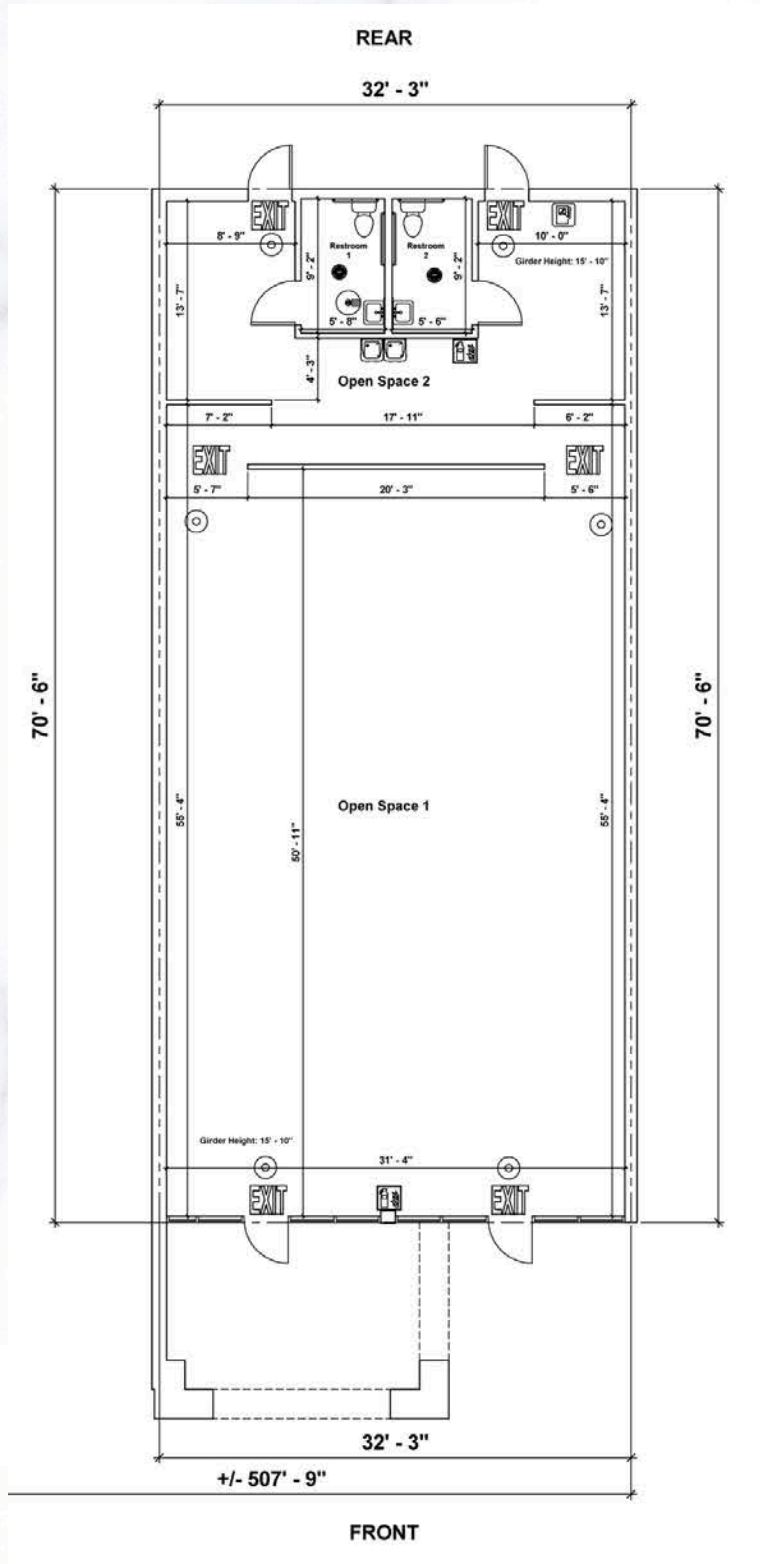
TENANT ROSTER:

- | | |
|--|---------------------------------------|
| A121: Starbucks 2,160 SF | B109: AVAILABLE 2,310 SF |
| A117: Aldo's Restaurant 3,240 SF | B117: Publix 45,600 SF |
| A115: Towncare Dental 2,160 SF | B119: Publix Liquors 1,400 SF |
| A111: Kings Lake Hair Design 1,960 SF | B121: Great Clips 1,120 SF |
| A107: Café Seabreeze 985 SF | B123: Hand & Stone 3,144 SF |
| A105: Tacos and Tequila Cantina 4,020 SF | B124: Tacos & Tequila Office 1,241 SF |
| A101: Leased 1,215 SF | B125: Pet Supplies Plus 8,657 SF |
| B101: Mitch's Cookies 848 SF | B130: Utopia Nail & Spa 1,050 SF |
| B103: Estrella 825 SF | B135: Quest Diagnostics 2,100 SF |
| B105: H&R Block 1,194 SF | B140: Naples Preserve Villas 1,064 SF |
| B107: Pho-An Vietnamese Cuisine 1,155 SF | B150: Tide 1,200 SF |



Unit #B109

2,271 SF





KINGS LAKE SQUARE

4810-4890 Davis Blvd | Naples, FL 34104



	<u>1 MILE</u>	<u>3 MILES</u>	<u>5 MILES</u>
POPULATION	8,059	60,076	130,517
AVG. INCOME	\$83,253	\$101,406	\$114,866
HOUSING UNITS	3,879	28,465	57,280

click here!



Google Maps

CONTACT **(239) 261-3400**

John Cheffy, ext. 182, john@ipcnaples.com