

FOR LEASE

AVAILABLE



BATTLEGROUND COMMONS

110 W. King Street (Unit #2) • Kings Mountain, NC

2,550 SF of Retail or Medical Space Available

- Former chiropractic office
- Highly visible corner space (11,000 VPD traffic count in front of the retail center)
- Great location at the signalized intersection of W. King Street and S. Battleground Avenue.
- Location offers strong demographics.
- Battleground Commons is located in Kings Mountain, the fastest growing city in Cleveland County located along I-85 just 25 miles from Charlotte.
- Lease Rate: \$18.00/SF NNN



221-1 S. Lafayette St
Shelby, NC 28150
980.404.1111

Spencer Borders

980.404.1111

spencer.borders@foothillscommercial.com

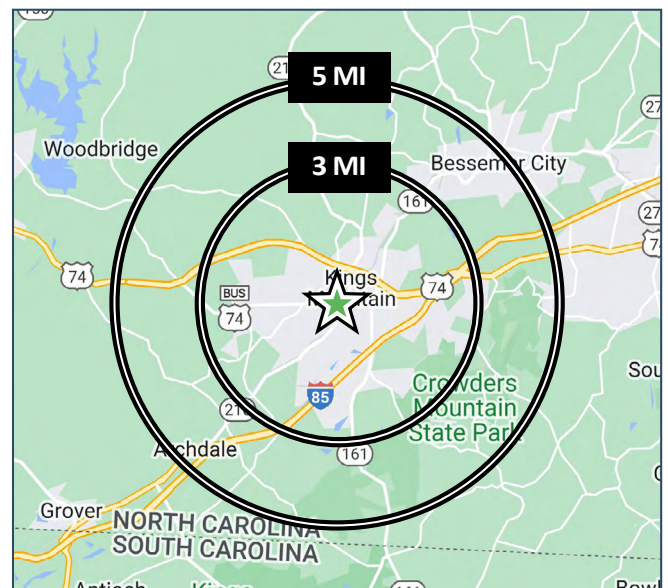
BATTLEGROUND COMMONS

FOR LEASE

110 W. King Street (Unit #2) • Kings Mountain, NC



	<u>3 MI</u>	<u>5 MI</u>	<u>0-5 MIN</u>	<u>0-10 MIN</u>
Current Population	14,427	24,694	7,684	19,542
Households	5,714	9,669	3,041	7,734
Ave Home Value	151,515	\$157,994	\$153,767	\$153,386
Average Age	41.4	41.4	41.9	41.2
Median HH Income	\$40,080	\$41,242	\$39,840	\$40,738
Number of Businesses	398	508	278	494
Total Employees	8,461	10,616	6,003	10,231
Daytime Population	18,016	24,990	12,960	24,294



221-1 S. Lafayette St
Shelby, NC 28150
980.404.1111

Spencer Borders

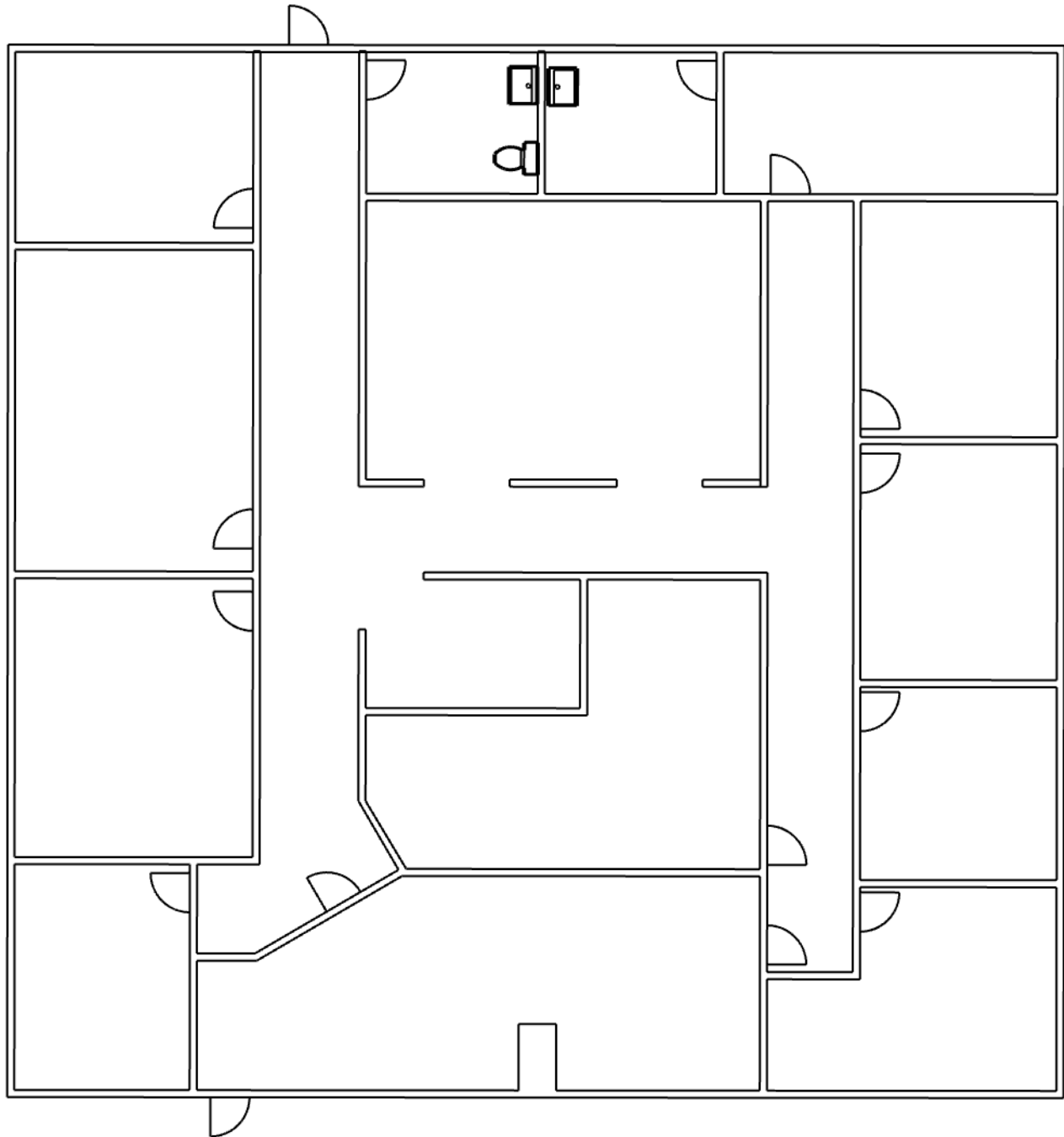
980.404.1111

spencer.borders@foothillscommercial.com

BATTLEGROUND COMMONS

FOR LEASE

110 W. King Street (Unit #2) • Kings Mountain, NC



221-1 S. Lafayette St
Shelby, NC 28150
980.404.1111

Spencer Borders

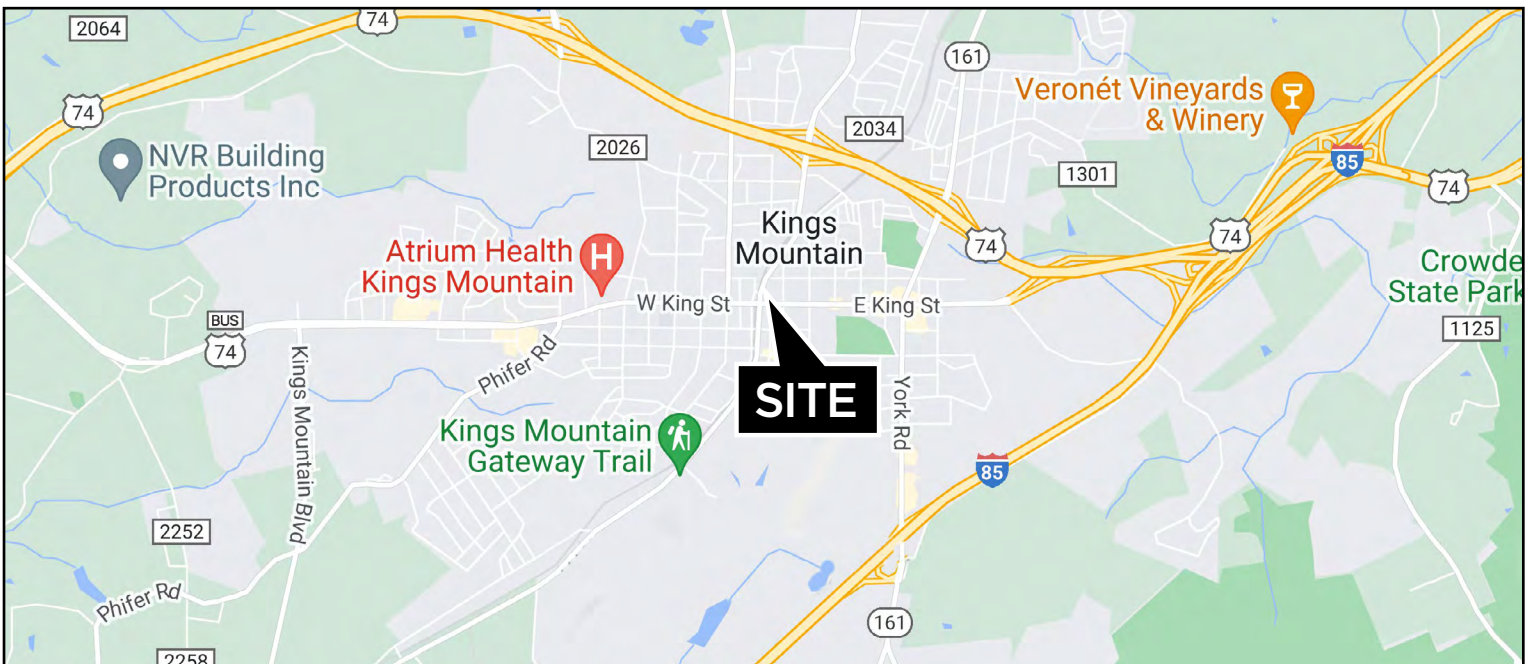
980.404.1111

spencer.borders@foothillscommercial.com

BATTLEGROUND COMMONS

FOR LEASE

110 W. King Street (Unit #2) • Kings Mountain, NC



221-1 S. Lafayette St
Shelby, NC 28150
980.404.1111

Spencer Borders

980.404.1111

spencer.borders@foothillscommercial.com