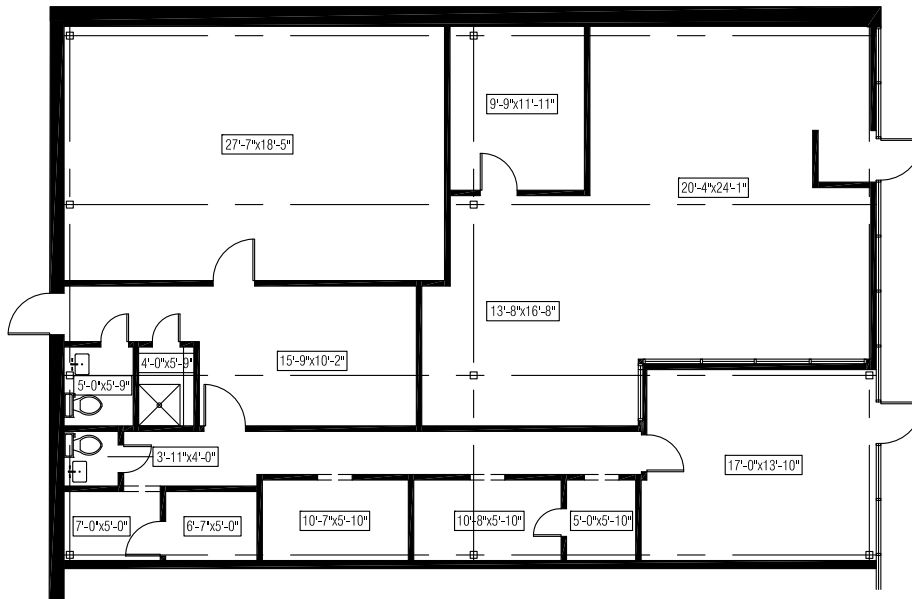
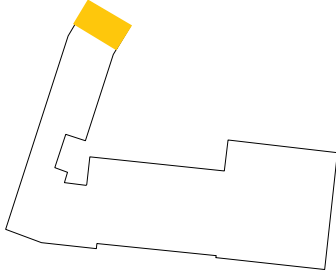


Floor 2
Suite 201
2,425 rsf

AZALEA PLAZA
3701 General De Gaulle Drive
New Orleans, LA 70114



FOR LEASING INQUIRIES, PLEASE CONTACT:



Andrea Arons Huseman, CCIM
Corporate Realty
504.587.1450
ahuseman@corp-realty.com

or

William Sadler
Corporate Realty
504.581.5005
wsadler@corp-realty.com