

# CROSSLAND OTTER HUNT

6 Porter Street,  
London,  
W1U 6DD

Refurbished Period Office - To Let  
1,107-2,237 sq ft

1,107 to 2,237 sq ft (102.84 to  
207.82 sq m)

020 7408 1114

[www.con.eu](http://www.con.eu)



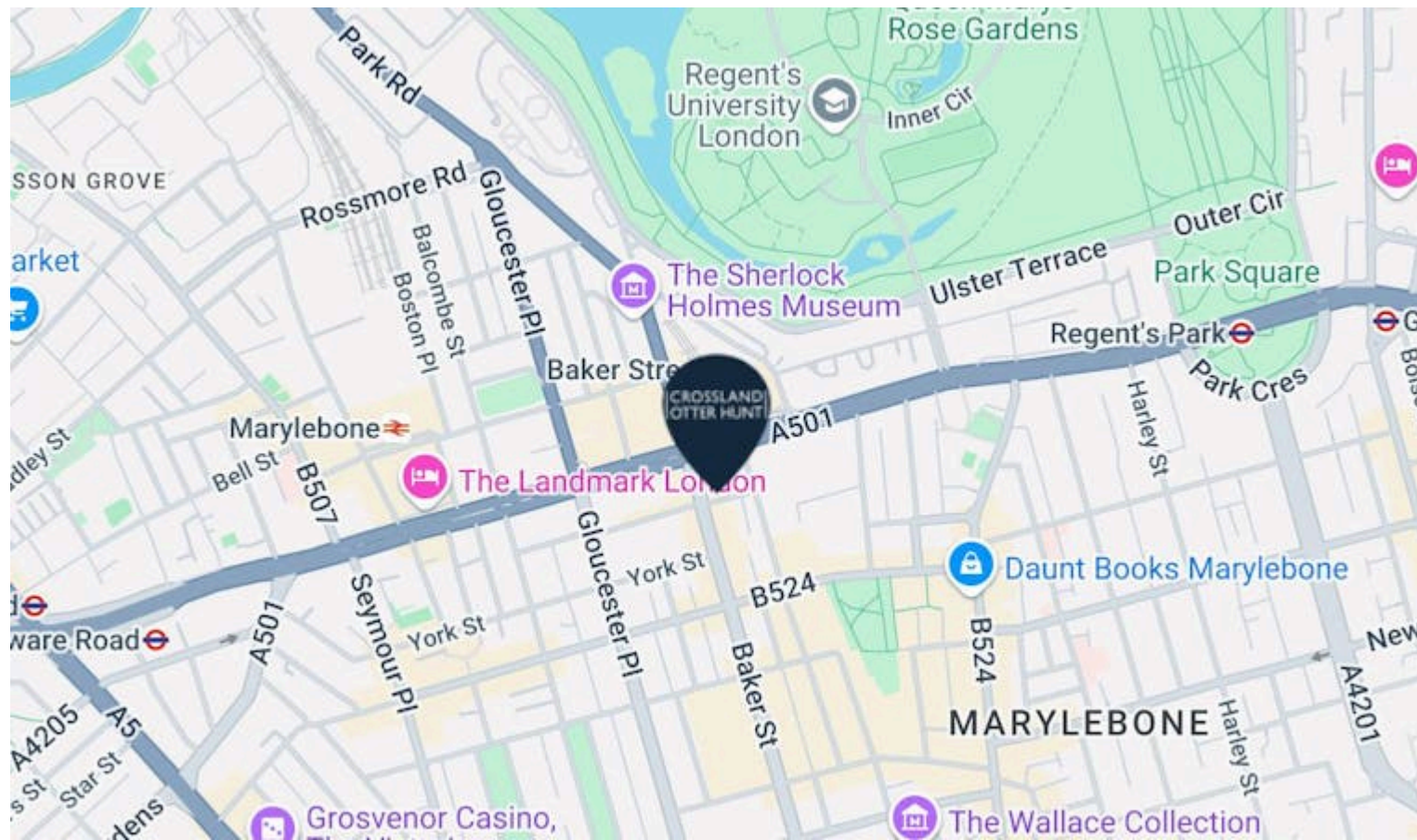
# CROSSLAND OTTER HUNT

6 Porter Street,  
London,  
W1U 6DD

Refurbished Period Office - To Let  
1,107-2,237 sq ft

1,107 to 2,237 sq ft (102.84 to  
207.82 sq m)

[View Online →](#)



## Nearest Stations



Baker Street  
(0.1 Miles)



Marylebone  
(0.3 Miles)



Edgware Road  
(Circle/District/Hammersmith  
and City)  
(0.5 Miles)

The property is situated on the north side of the street, between Chiltern Street and Baker Street, just to the south of Marylebone Road, within three minutes walk of Baker Street Underground station (Jubilee, Circle, Bakerloo, Metropolitan, and Hammersmith & City lines).

020 7408 1114

[www.coh.eu](http://www.coh.eu)



# CROSSLAND OTTER HUNT

6 Porter Street,  
London,  
W1U 6DD

---

Refurbished Period Office - To Let  
1,107-2,237 sq ft

---

1,107 to 2,237 sq ft (102.84 to  
207.82 sq m)

---

[View Online →](#)

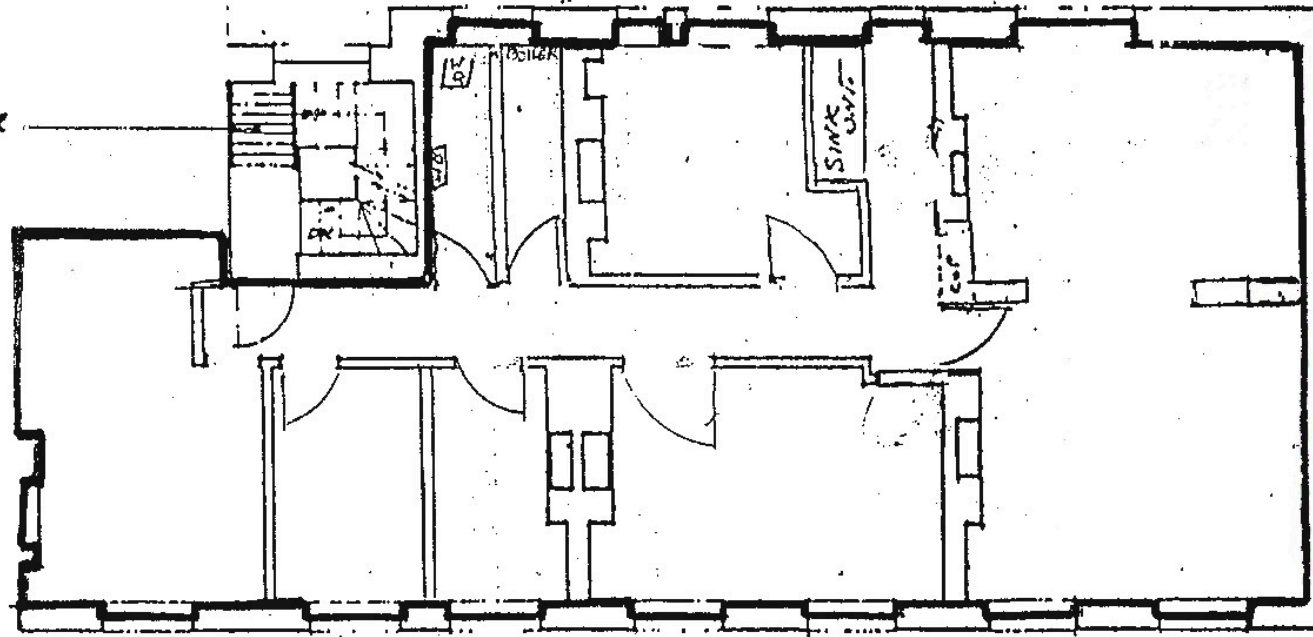
---

020 7408 1114  
[www.coh.eu](http://www.coh.eu)

- WC
- Kitchenette
- Good natural light
- Central heating

Floor plans 3rd floor

ESCAPE LADDER  
TO FLAT ROOF



THIRD FLOOR PLAN  
AS IT IS

## Accommodation

The accommodation comprises the following areas:

NAME	SQ FT	RENT (SQ FT)	RATES PAYABLE (SQ FT)	SERVICE CHARGE (SQ FT)	TOTAL YEAR	AVAILABILITY
3rd	1,130	£39.50	£20.31	£6.92	£75,404.90	Available
Lower Ground	1,107	£29.50	£10.82	£6.92	£52,294.68	Available
Total	2,237	£34.50	£15.57	£6.92	£127,699.58	

# CROSSLAND OTTER HUNT

## CONTACT US



Phil Frenay

02073992742 | 07818566174

phil@coh.eu



Jon Staniforth

020 7408 1114 | 07776687270

jon@coh.eu

020 7408 1114

www.coh.eu

## Description

Both floors provide a series of cellular offices plus a larger general office, with WC and kitchenette facilities. They are centrally heated, and enjoys good natural light.

## Location

The property is situated on the north side of the street, between Chiltern Street and Baker Street, just to the south of Marylebone Road, within three minutes walk of Baker Street Underground station (Jubilee, Circle, Bakerloo, Metropolitan, and Hammersmith & City lines).

## EPC

Upon enquiry

## ANTI MONEY LAUNDERING

The successful applicant will be required to provide two forms of ID and proof/source of funds, to satisfy anti-money laundering protocols.

# CROSSLAND OTTER HUNT

[www.coh.eu](http://www.coh.eu)



Visit Our Office  
3-5 Barrett Street  
London  
W1U 1AY