

Fixture Schedule

Electrical

Symbol	Description	Size	Qty.
	Lay In LED Lighting	2'x4'	74
	Emergency Lay In LED Lighting	2'x4'	15
	Recessed LED Lighting	1'x4'	5
	Illuminated Ceiling Exit Sign		5
	Smoke Detector		10

HVAC

Symbol	Description	Size	Qty.
	Supply Ceiling Diffuser	2'x2'	47
	Return Ceiling Diffuser	2'x2'	42
	Supply Ceiling Diffuser	6"x14"	5
	Exhaust Fan	14"x14"	5

Fixture Notes

Emergency 2x4 fixtures to include integral battery (or served by emergency circuit) per electrical design.

Provide independent support for lay-in fixtures per manufacturer and code.

Sheet Notes

Provide suspended acoustical ceiling system where shown utilizing USG grid system with BERC2 beam end retaining clips at non-riveted ends and 16 ga. seismic hanger wires at 4'-0" o.c., supported from roof trusses, installed in accordance with manufacturer requirements and applicable code. Provide ceiling tile per schedule.

Provide a continuous 1-hour fire-resistance-rated gypsum ceiling (lid) installed directly to roof truss bottom chord in accordance with IBC Section 712. Maintain continuity of the rated lid at all conditions shown.

Areas noted "Open to Fire Ceiling" have no suspended ceiling; exposed fire-rated gypsum lid above shall remain continuous and intact. Penetrations through the rated lid shall be protected to maintain the required fire-resistance rating, and rated assemblies shall be maintained at separations.

Provide smoke detectors in interior exit access corridors in accordance with IBC Section 907 and NFPA 72.

Lay-in luminaires shall be installed within the acoustical ceiling system and shall not penetrate the rated gypsum lid above. Provide independent support for lay-in fixtures per manufacturer and code. Emergency luminaires shall include integral battery backup or be served by emergency circuitry per electrical design. Locate lighting and HVAC devices to avoid conflicts with ceiling grid and life-safety devices. Coordinate all ceiling components prior to installation.

Return Air Plenum Designation

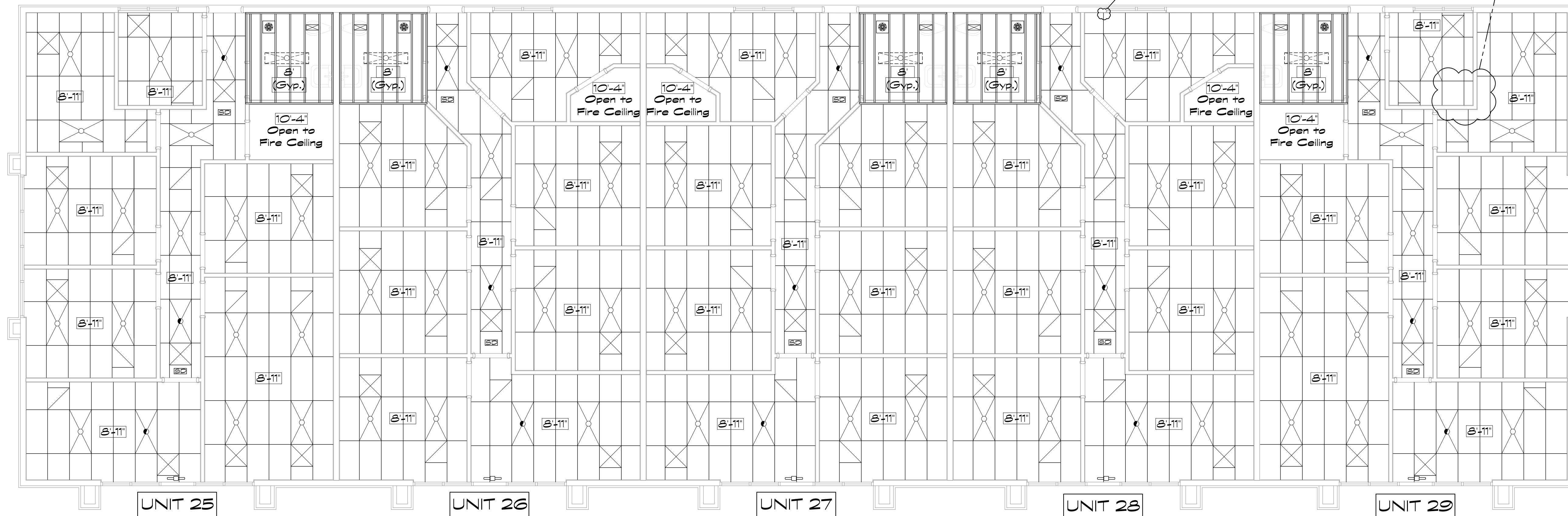
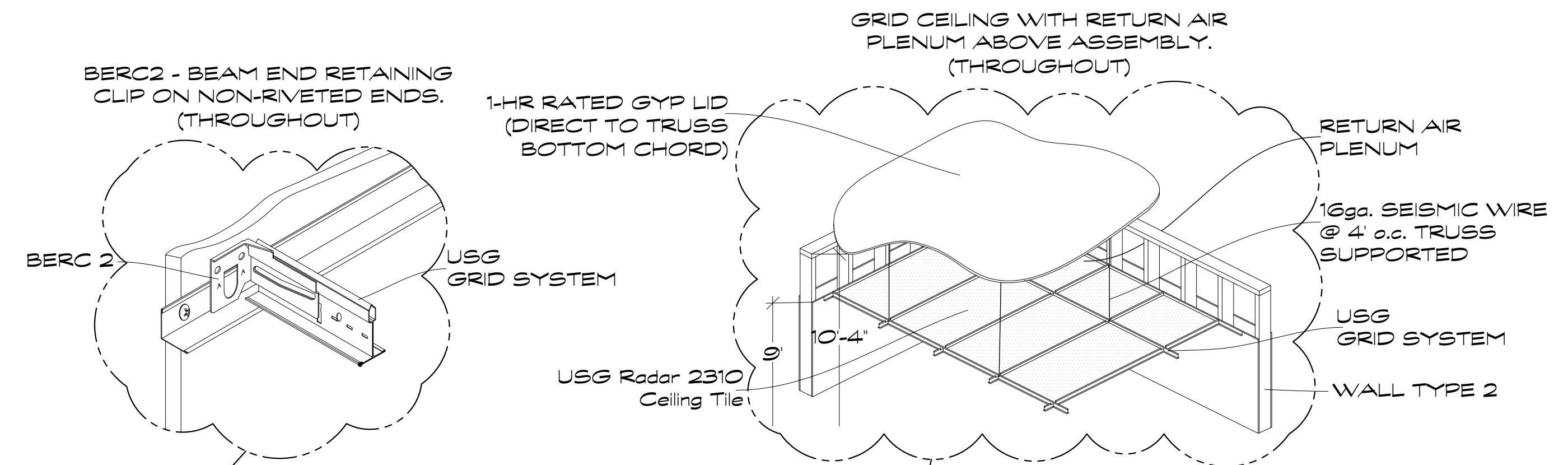
The space between the acoustical ceiling system and the 1-hour rated gypsum ceiling (lid) above is designated as a return air plenum.

All electrical, mechanical, and plumbing materials located within the return air plenum shall comply with applicable code requirements for plenum spaces, including flame spread and smoke developed limitations.

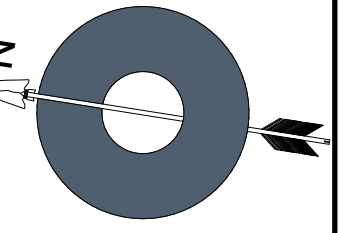
No combustible storage, non-plenum-rated materials, or unrelated equipment shall be installed within the return air plenum.

The rated gypsum ceiling (lid) above the return air plenum shall remain continuous and intact. Penetrations through the rated ceiling shall be protected to maintain the required fire-resistance rating.

Return air pathways shall be coordinated to maintain required rated assemblies at separations.



BERT SMITH & SONS
General Contractors
2124 N 6700 W
Ogden, Utah 84404
(801)388-3253
bsc-contractors.com



Units 25-29 Interior Finish
Millcreek Plaza Units 25-29
320 N 1900 W
Marriott-Slaterville, Utah 84404
Reflected Ceiling Plan

NO.	REVISIONS	DATE

DRAWN BY
Josh Smith

DATE
1/30/26

SHEET
Reflected Ceiling Plan

SCALE
3/32"=1'

IF004
4 OF XX