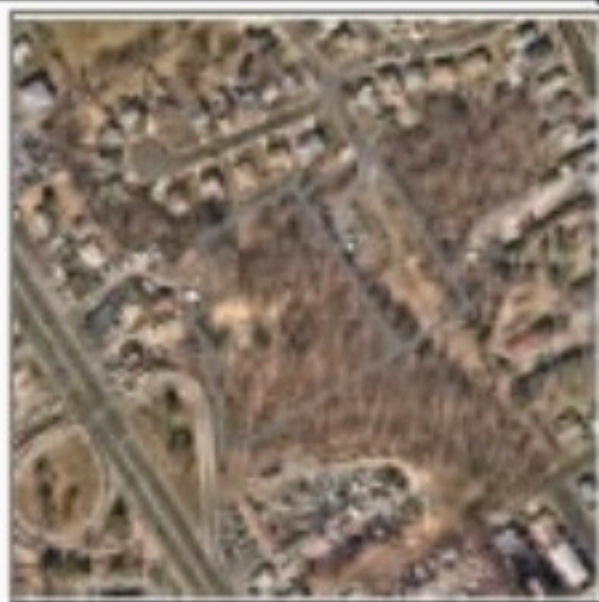


CITY OF SOUTH AMBOY
MUNICIPAL BUILDING



AERIAL VIEW

ROUTE 35 JUGHANDLE

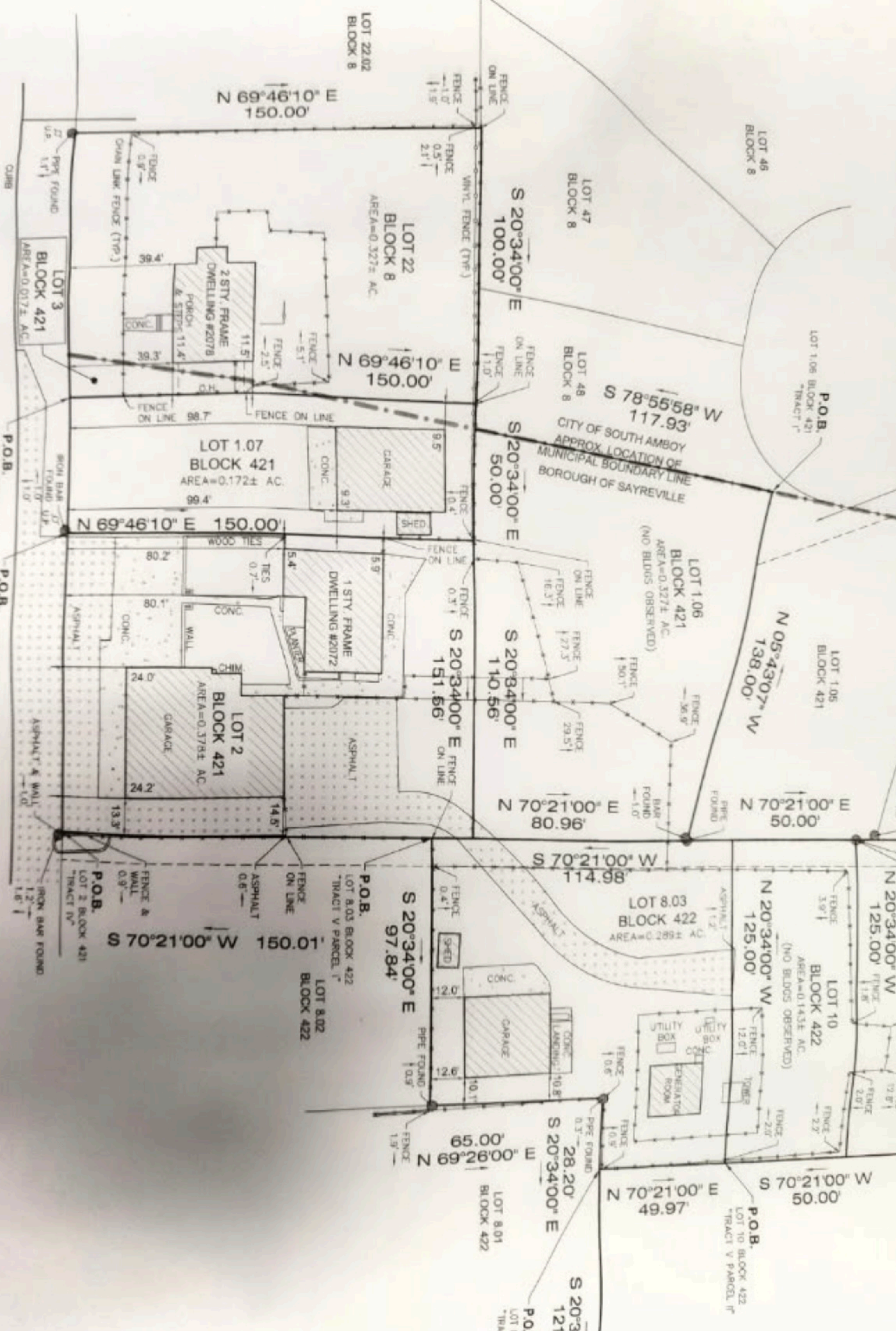
N.J.S.H. ROUTE 35



SHEET NO. DATE DRAWN BY CHECKED BY APPROVED BY	CREST Engineering Associates, Inc. 401 N. State Street Paramus, New York 10765 (201) 261-1100 www.cresteng.com	SHEET NO. DATE DRAWN BY CHECKED BY APPROVED BY	LOTS 11, 11.01, 11.04 & 5 BLK 31-022
			BOROUGH OF SANDHILL WOODEN COUNTY, NEW JERSEY
CONCEPT PLAN			SHEET NO. DATE DRAWN BY CHECKED BY APPROVED BY

NEW JERSEY STATE HIGHWAY ROUTE 35
(R.O.W. VARIES)

N 20°34'00" W 100.00'
N 20°34'00" W 50.00'
N 20°34'00" W 109.04'



LOT 22,02
BLOCK 8

LOT 46
BLOCK 8

LOT 47
BLOCK 8

LOT 48
BLOCK 8

LOT 1.06
BLOCK 421
TRACT I

LOT 1.05
BLOCK 421

LOT 1.05
BLOCK 421

LOT 1.06
BLOCK 421
AREA=0.327± AC.
(NO BLDGS OBSERVED)

LOT 8.03
BLOCK 422
AREA=0.289± AC.

LOT 10
BLOCK 422
AREA=0.143± AC.
(NO BLDGS OBSERVED)

LOT 8.01
BLOCK 422

LOT 8.02
BLOCK 422

LOT 8.03
BLOCK 422
TRACT V PARCEL I

LOT 8.01
BLOCK 422
TRACT V PARCEL II

LOT 8.02
BLOCK 422
TRACT V PARCEL III

LOT 8.03
BLOCK 422
TRACT V PARCEL IV

LOT 8.04
BLOCK 422
TRACT V PARCEL V

LOT 8.05
BLOCK 422
TRACT V PARCEL VI

LOT 8.06
BLOCK 422
TRACT V PARCEL VII