

Versatile Office Space in Breaux Bridge

1,500
SQUARE FEET

\$12.00 /yr
RENT / SF

\$1,500.00
RENT

(337) 769-6916
www.rpmacadiana.com



PROPERTY ADDRESS

1442A E. Bridge St.
Breaux Bridge, LA 70517

COMMERCIAL TYPE: Office AVAILABLE: Now

DESCRIPTION

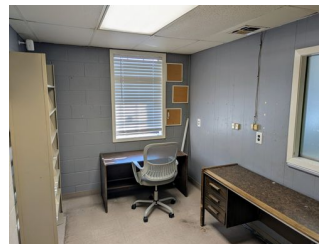
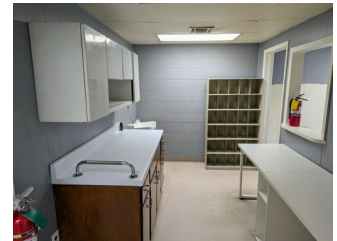
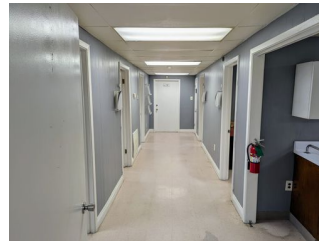
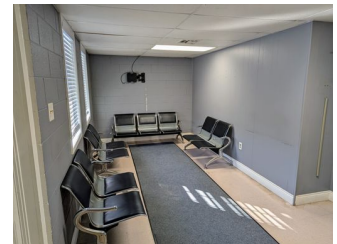
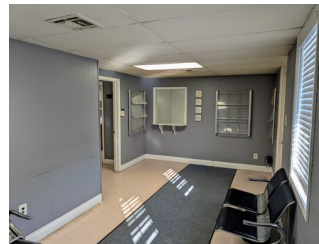
Welcome to the Versatile Office Space in Breaux Bridge, LA, where functionality meets convenience! This space is designed to cater to your professional needs, featuring a welcoming waiting room and a professional reception desk, perfect for greeting your clients or guests. The space includes 6 separate offices and two private bathrooms, as well as a sink in each individual room. Additionally, a storage room is available, providing ample space to keep your office supplies and documents organized. Located in the heart of Breaux Bridge, this office space offers easy access to the local hospital and pharmacy, making it an ideal choice for your business. Experience the perfect blend of practicality and location at the Versatile Office Space in Breaux Bridge.

AMENITIES

- Waiting Room
- Reception Desk
- 2 Private Bathrooms
- Storage Room

RENTAL TERMS

Rent	\$1,500
Security Deposit	\$1,500
Application Fee	\$45



View this listing online:

