

**PRICE REDUCED**



**6201 27TH STREET,  
SACRAMENTO, CA**

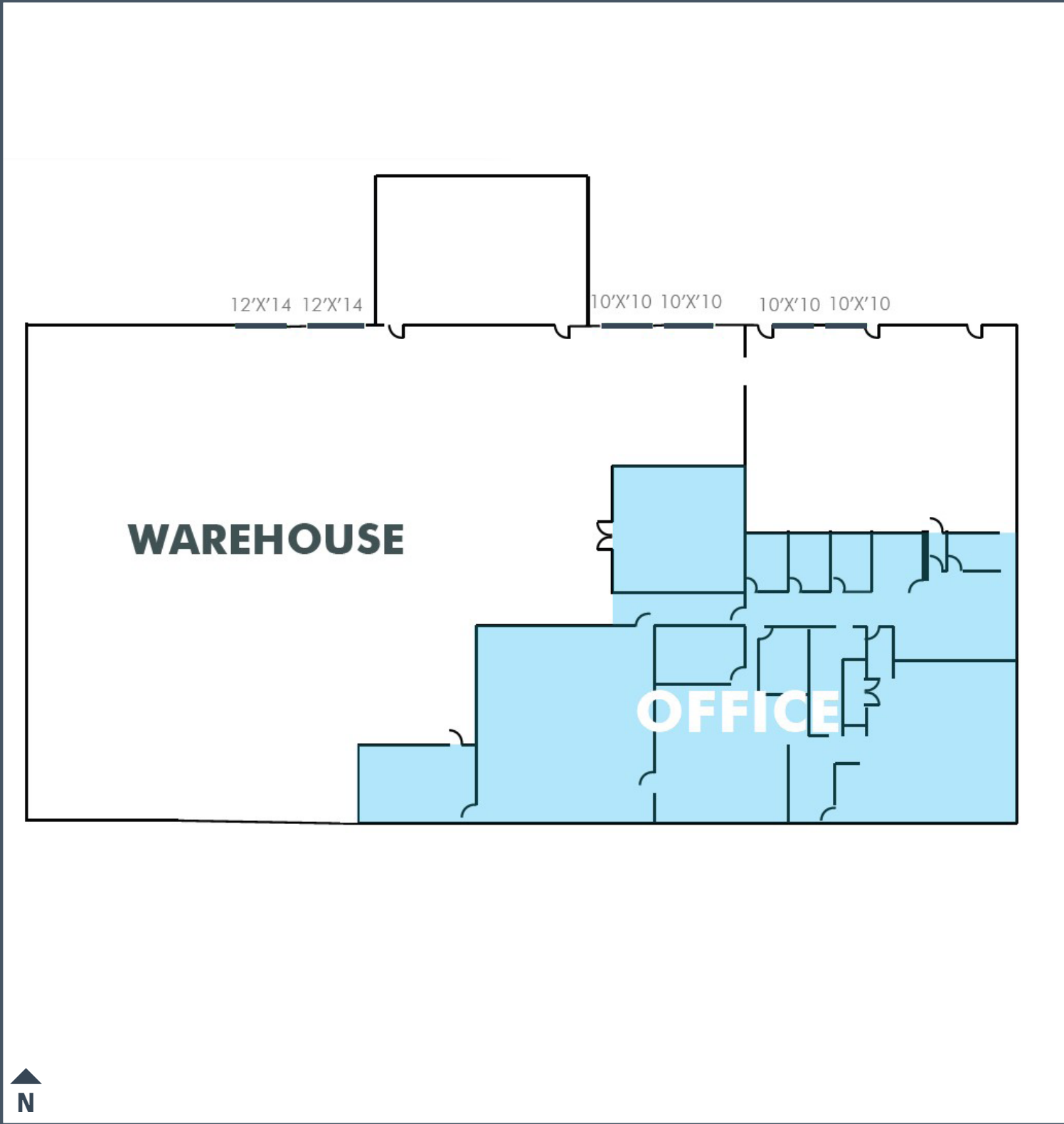
**CBRE**

# BUILDING SPECIFICATIONS

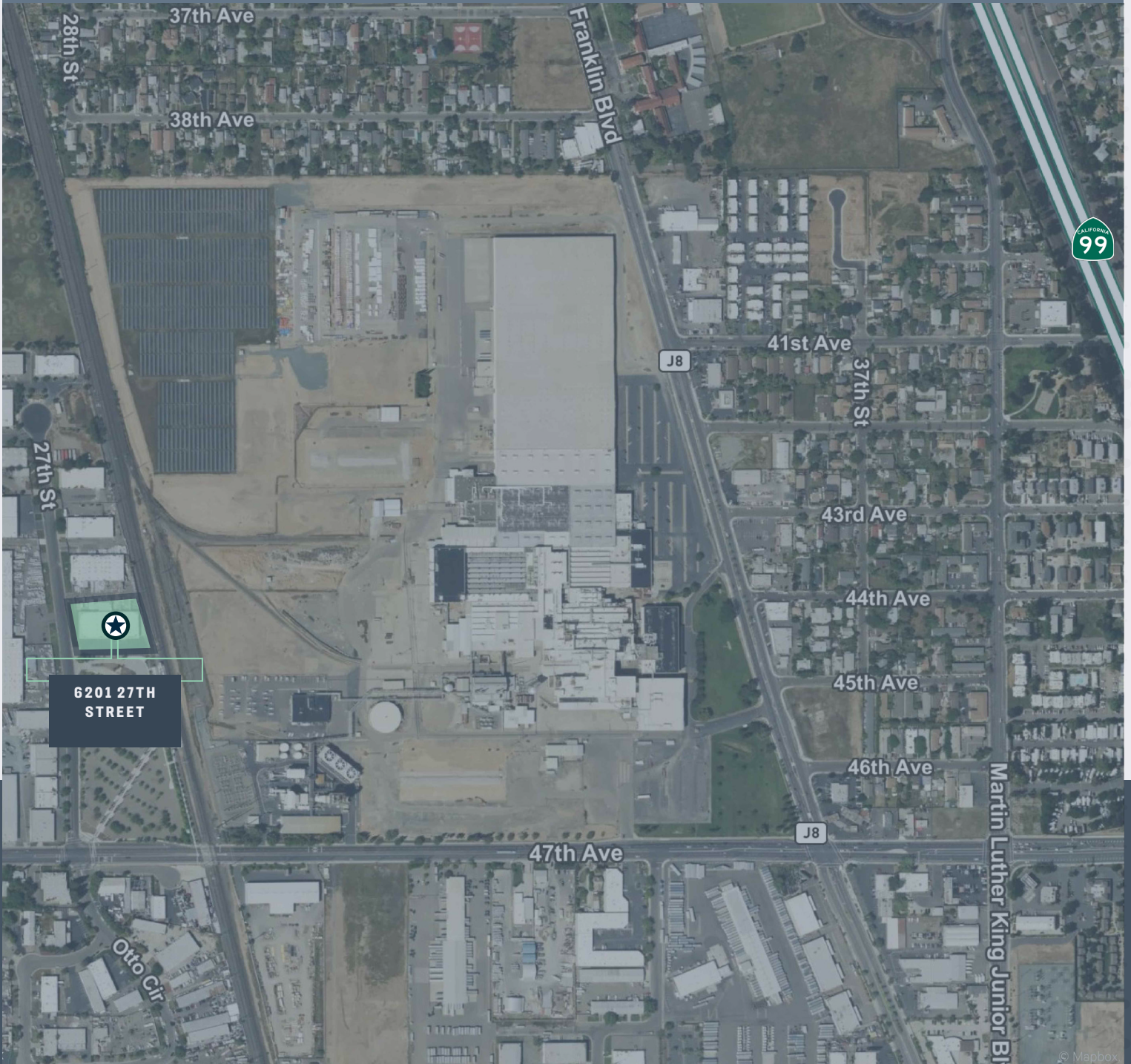
Spec Type	Spec Details
Building Area:	±23,000 SF
Lot Size:	±1.38 Acres
Fenced Yard:	±15,000 SF
Office:	±7,000 SF
Zoning:	M-1S Light Industrial
Clear Height:	20'
Column Spacing:	24' x 48'
Grade Doors:	6 total
Electrical:	Tenant to independently verify.
Sprinklers:	None
Parking Stalls:	28



# FLOOR PLAN



# AERIAL MAP





6201 27TH AVENUE,  
SACRAMENTO, CA

±23,000 SF ON ±1.38 ACRES  
FOR SALE

**JIMMY LANDIS**

Senior Associate  
+1 916 446 8280  
jimmy.landis@cbre.com  
Lic. 02130311

**SEAN MEROLD, SIOR**

Senior Vice President  
+1 916 446 8701  
sean.merold@cbre.com  
Lic. 01803204

**MIKE ZIMMERMAN, SIOR**

Senior Vice President  
+1 916 446 8702  
mike.zimmerman1@cbre.com  
Lic. 01514055

**RYAN DEANGELIS, SIOR**

Executive Vice President  
+1 916 871 3714  
ryan.deangelis@cbre.com  
Lic. 01280330



© 2026 CBRE, Inc. All rights reserved. This information has been obtained from sources believed reliable but has not been verified for accuracy or completeness. CBRE, Inc. makes no guarantee, representation or warranty and accepts no responsibility or liability as to the accuracy, completeness, or reliability of the information contained herein. You should conduct a careful, independent investigation of the property and verify all information. Any reliance on this information is solely at your own risk. CBRE and the CBRE logo are service marks of CBRE, Inc. All other marks displayed on this document are the property of their respective owners, and the use of such marks does not imply any affiliation with or endorsement of CBRE. Photos herein are the property of their respective owners. Use of these images without the express written consent of the owner is prohibited.