



MILL AVENUE

BUSINESS PARK



FOR LEASE | 1,303 - 4,376 SF

5030 S. MILL AVENUE & 5005-5025 S. ASH AVENUE, TEMPE, AZ 85282





14'

14'
CLEAR HEIGHT



FRONTAGE ON
MILL AVENUE



ON-SITE
RESTAURANT



EXCELLENT
ACCESS TO US-60,
I-10 & LOOP 101



SPEC SUITE
FINISHES

5025 S ASH AVE
AVAILABLE SPACE

SUITE 6	2,360 SF
SUITE 9	2,016 SF

5030 S MILL AVE
AVAILABLE SPACE

SUITE 3	1,695 SF
---------	----------

5005 S MILL AVE
AVAILABLE 02/01

SUITE 18	1,303 SF
----------	----------

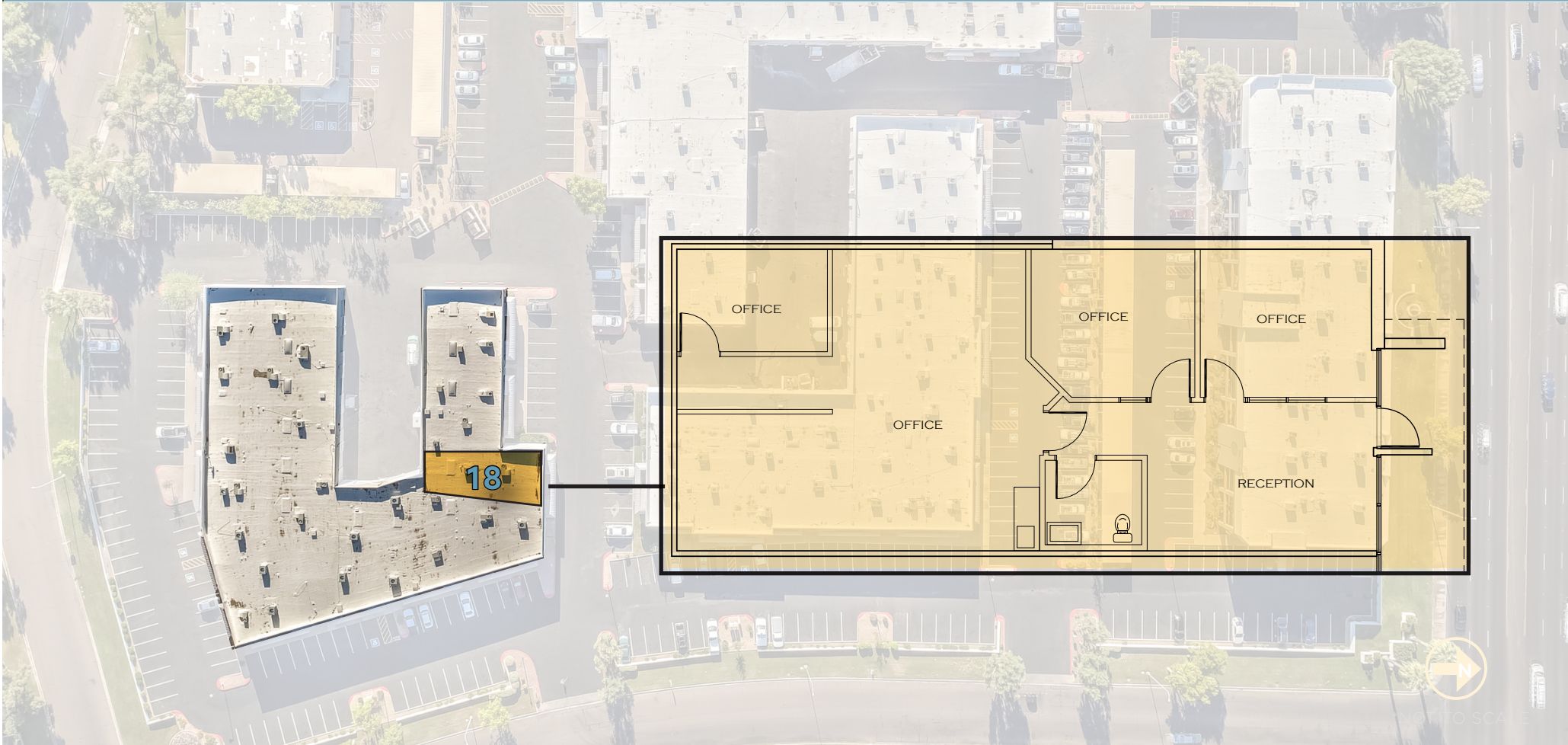


MILL AVENUE

BUSINESS PARK

FLOOR PLANS

5005 S Ash Avenue



5005 Ash Ave, Suite 18

- 1,303 SF Office
- 100% Office
- Lease Rate: \$1.35/SF MG

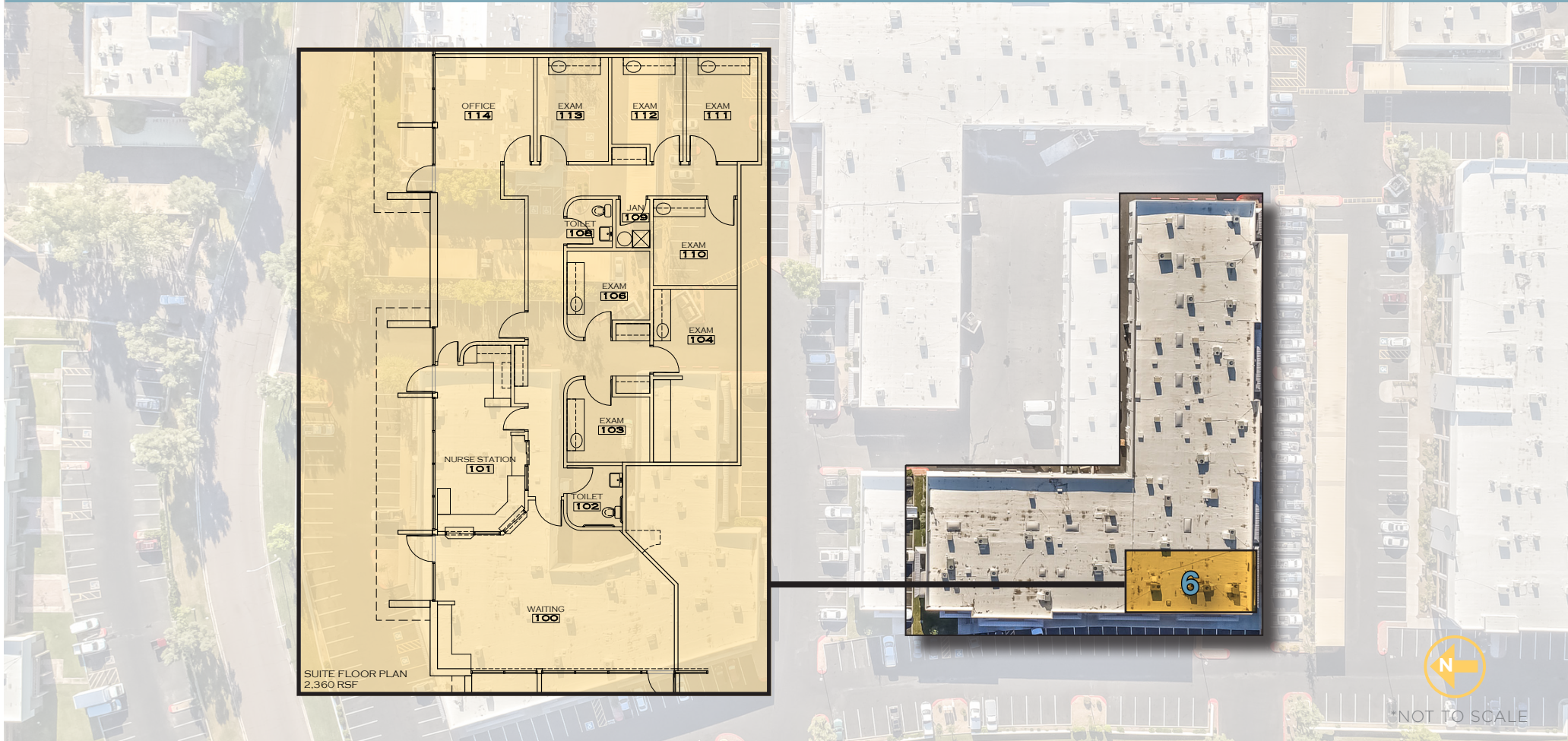


MILL AVENUE

BUSINESS PARK

FLOOR PLANS

5025 S Ash Avenue



5025 Ash Ave, Suite 6

- 2,360 SF Office/Medical
- Lease Rate: \$1.35/SF MG

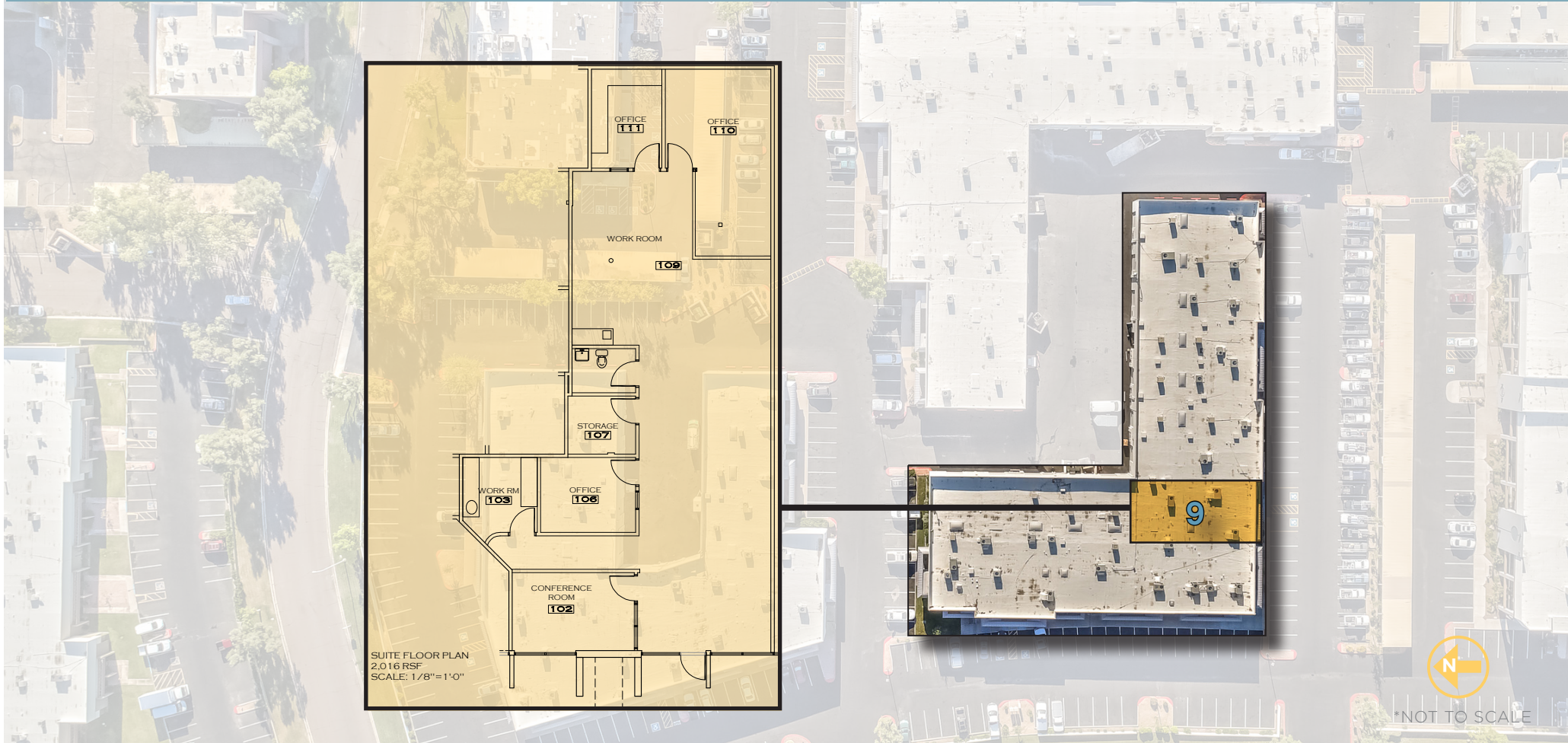


MILL AVENUE

BUSINESS PARK

FLOOR PLANS

5025 S Ash Avenue



SUITE FLOOR PLAN
2,016 RSF
SCALE: 1/8"=1'-0"

5025 Ash Ave, Suite 9

- 2,016 SF Office/Medical
- Lease Rate: \$1.35/SF MG

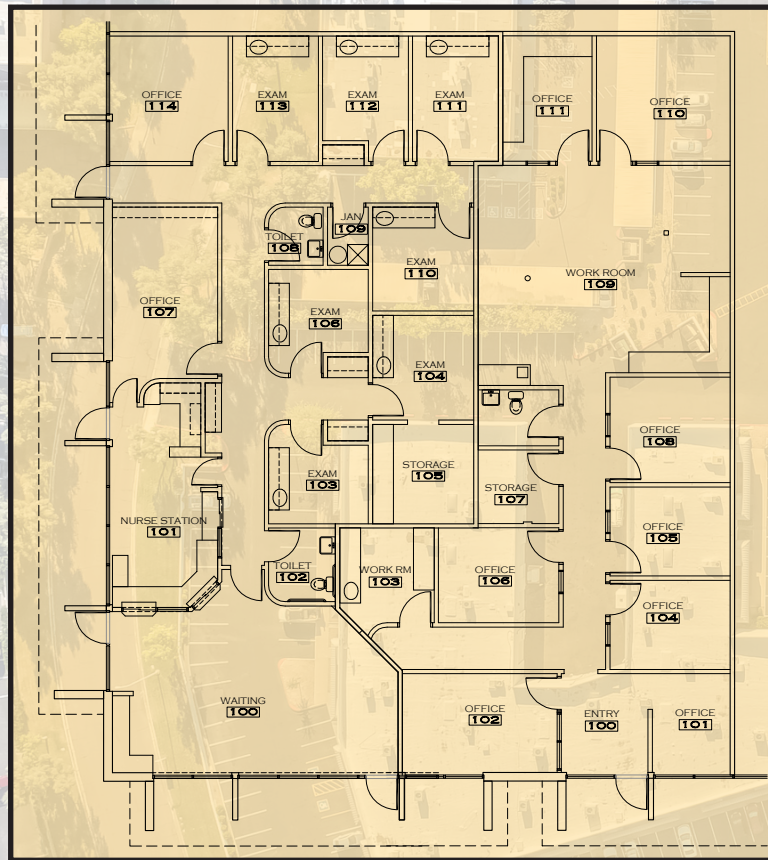


MILL AVENUE

BUSINESS PARK

FLOOR PLANS

5025 S Ash Avenue



*NOT TO SCALE

5025 Ash Ave, Suites 6/9

- 4,376 SF Office/Medical
- Lease Rate: \$1.35/SF MG



MILL AVENUE

BUSINESS PARK

FLOOR PLANS

5030 S Mill Avenue

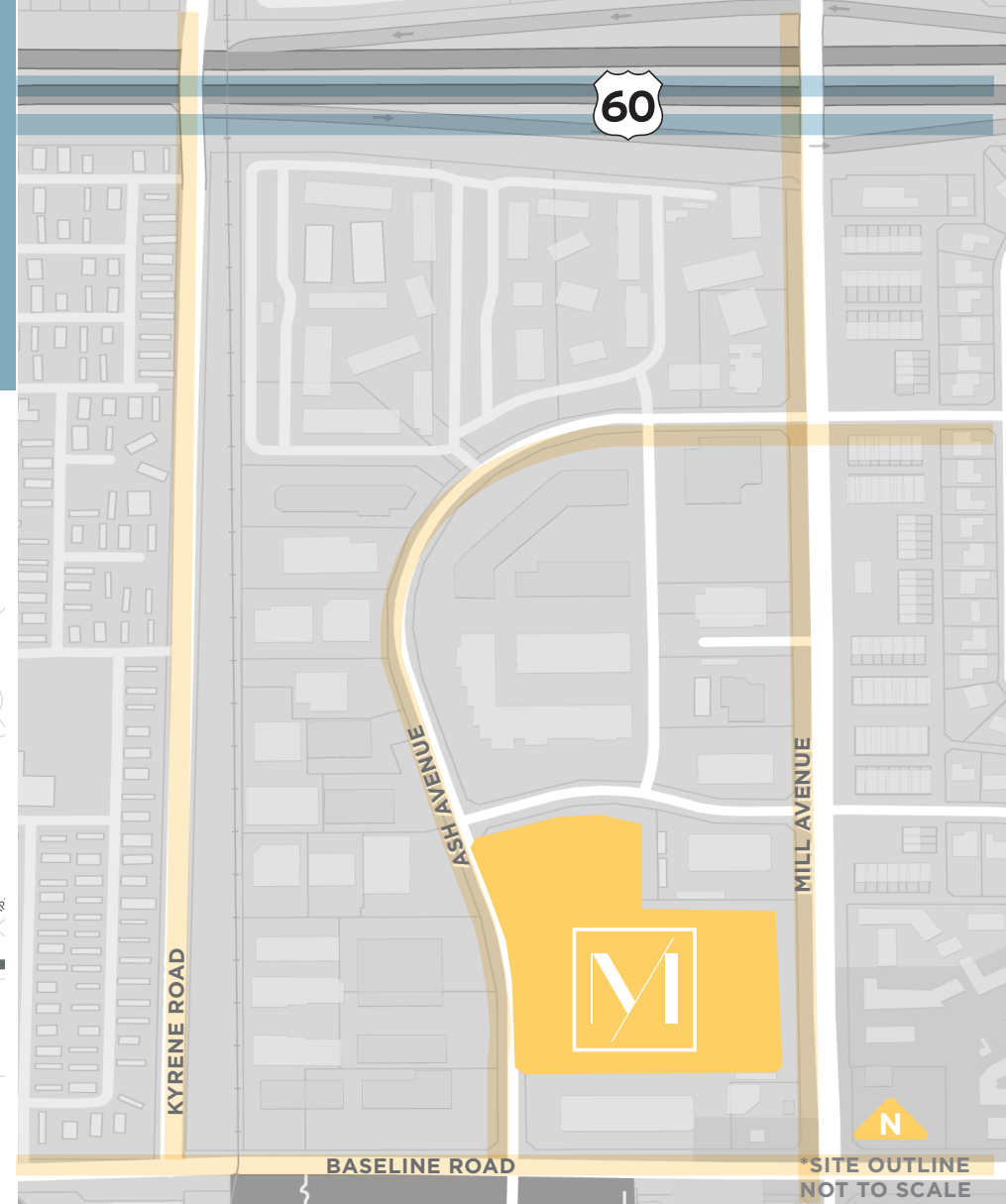
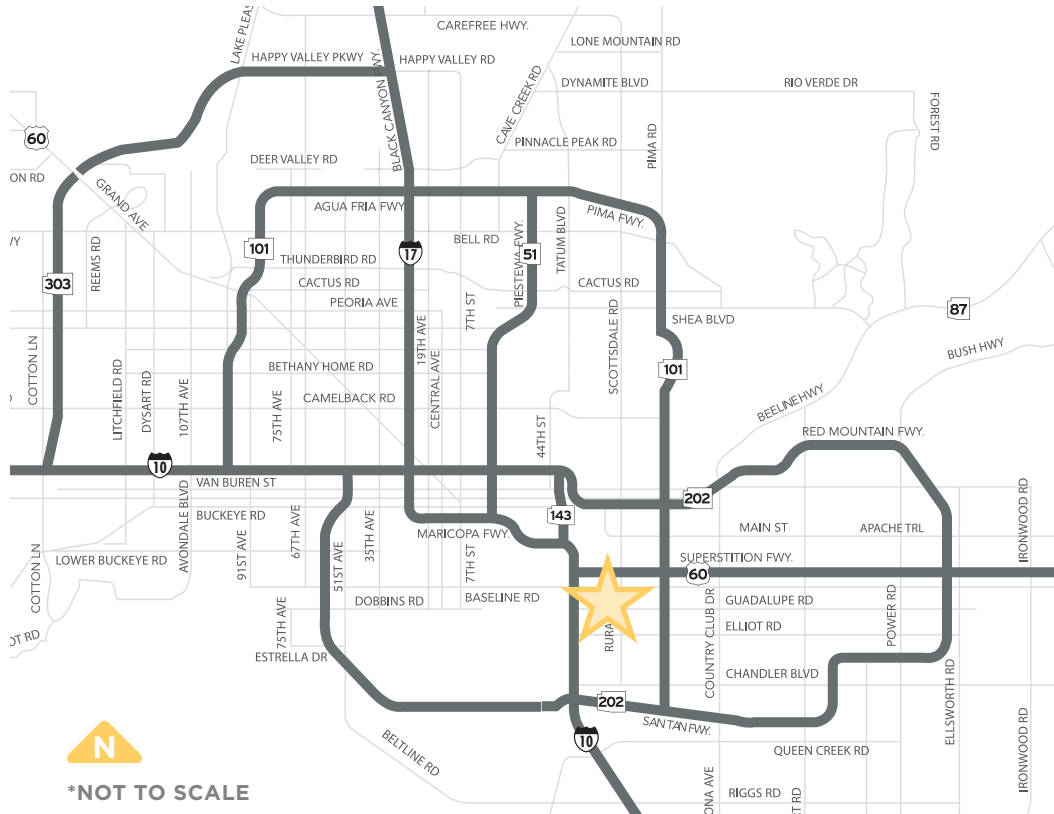


5030 Ash Ave, Suite 3

- 1,695 SF of Office/Warehouse
- 14' clear height
- Grade-level loading
- Evap cooled warehouse
- Available for immediate occupancy
- Lease Rate: \$1.35/SF MG



MILL AVENUE BUSINESS PARK



CONTACT:

SERENA WEDLICH, SIOR
Senior Vice President
+1 602 735 5633
serena.wedlich@cbre.com

