

• INDUSTRIAL SUBLEASE OPPORTUNITY

±17,100 SF Warehouse for Sublease

333 Beichl Avenue · Beaver Dam, Wisconsin 53916



AVAILABLE SF

±17,100^{SF}

CLEAR HEIGHT

28'

DIMENSIONS

225'×76'

DRIVE-IN DOOR

1

LOADING

Shared Dock
Doors

A clean, contiguous block of warehouse space available for sublease within an active industrial building in Beaver Dam. Generous 28-foot clear heights and shared loading access — well-suited for distribution, storage, light manufacturing, or 3PL operations. **Term & rate negotiable.**

IDEAL FOR

01

Distribution

Regional shipping & receiving

02

Storage

High-cube racked or bulk

03

Light Manufacturing

Assembly & production

04

3PL Operations

Third-party logistics



EXCLUSIVELY LISTED BY

LISTING BROKER

Jerry Erdmann

CELL 262.719.4635

EMAIL jerry@thepropertyadvisor.com

The information contained herein has been obtained from sources deemed reliable but is not guaranteed. All measurements, dimensions, and square footages are approximate. Prospective tenants should independently verify all information.

Floor Plan

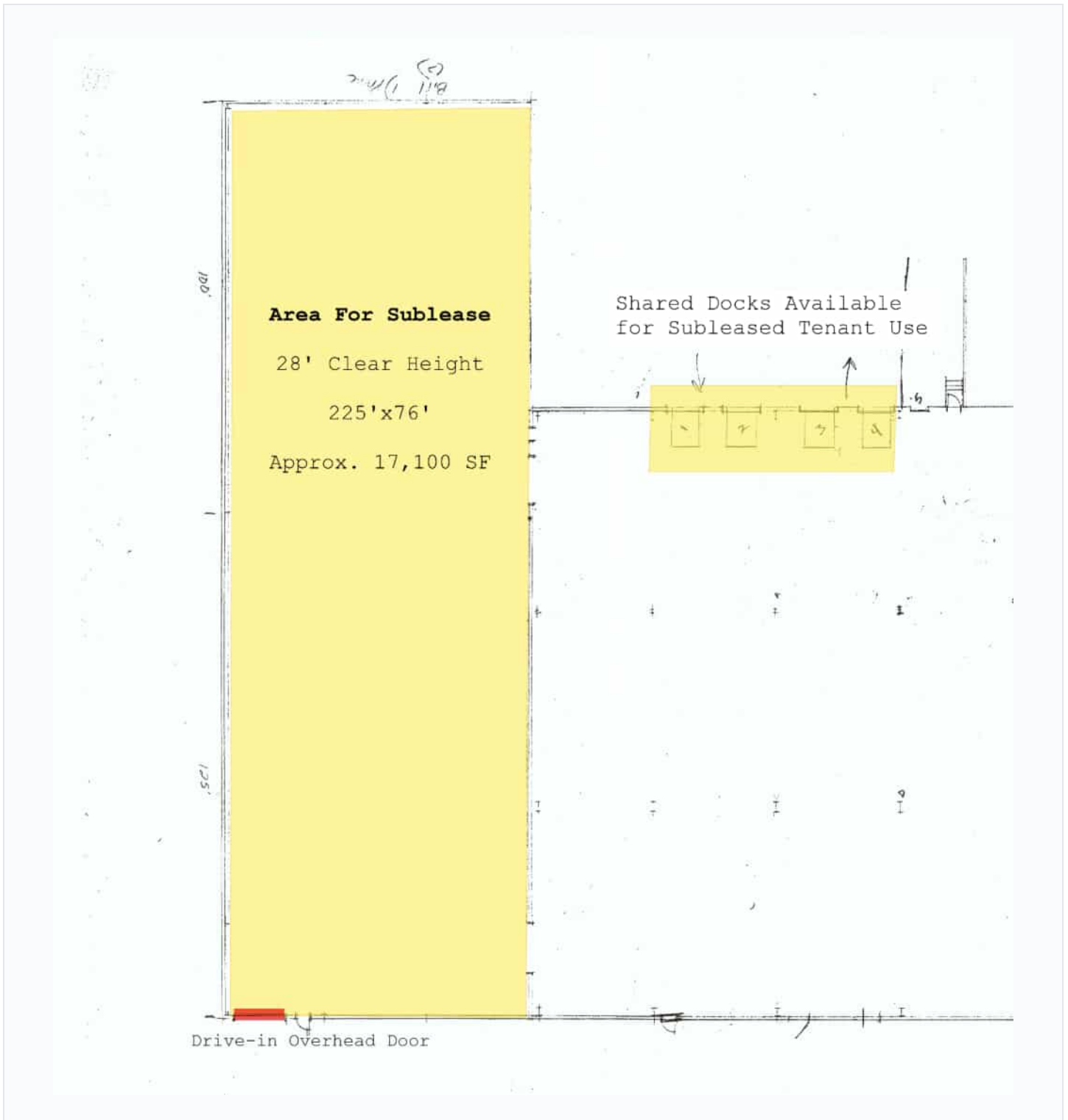
SUBLEASE AREA

Sublease area highlighted within the larger building footprint.

±17,100^{SF}

Available Sublease Area 225' x 76' · 28' Clear Height

NOT TO SCALE · VERIFY ALL DIMENSIONS



LISTING BROKER
Jerry Erdmann

CELL 262.719.4635 EMAIL jerry@thepropertyadvisor.com

Property Photos

Building exterior, loading area, and warehouse interior.

GALLERY



Photographed on-site · Recent

INTERIOR SHOWN WITH CURRENT TENANT FIXTURES



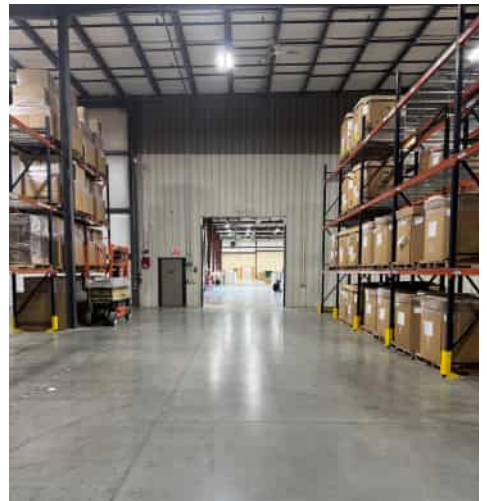
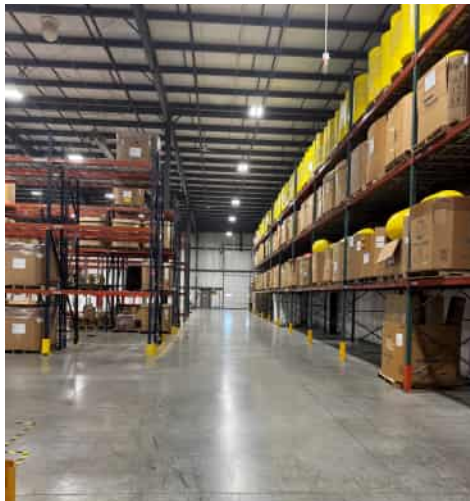
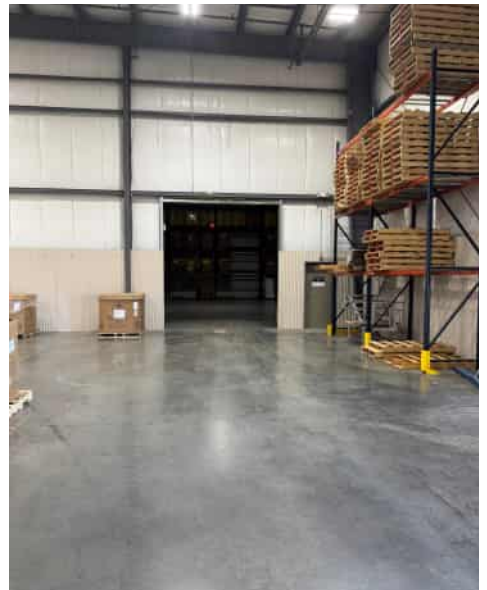
EXTERIOR



DRIVE-IN DOOR



SHARED DOCK DOORS



LISTING BROKER
Jerry Erdmann

CELL 262.719.4635

EMAIL jerry@thepropertyadvisor.com