

irvine towers[®]

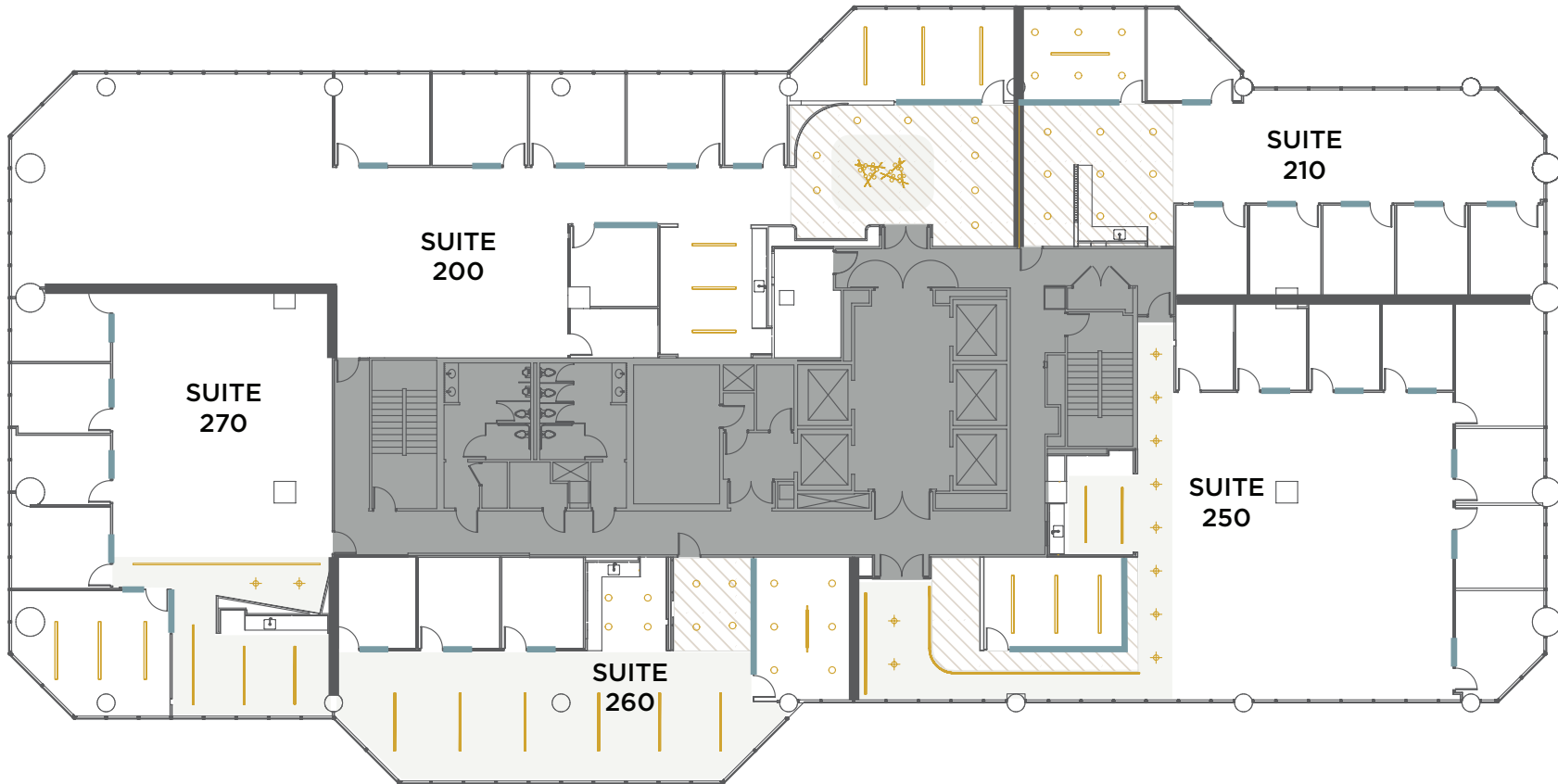
18200 Von Karman Avenue | Second Floor

Flex+[®]
BY IRVINE COMPANY



18200 Von Karman Avenue

floor 2



— GLASS  LIGHTS  OPEN CEILING  HARD LID CEILING

○ 5 new, premium move-in ready suites ranging from 2.5K - 6K SF

○ High-end suite features include open ceiling, specialty lighting and premium break areas

○ Convenient access to on-site amenities include unique outdoor workspaces, casual and fine-dining options, Kinetic fitness center, Venue Meetings & Events and free airport shuttle



18200 Von Karman Avenue

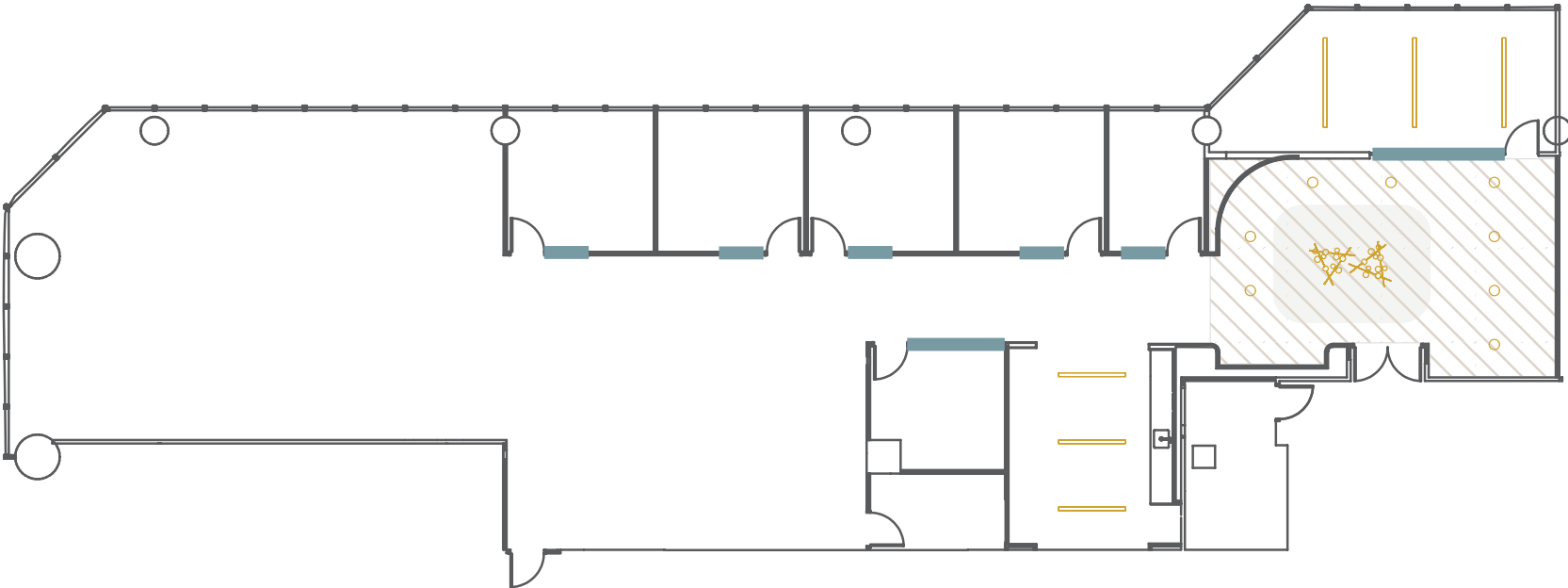
suite 200

total size
±6,122 sqft

team size
28-34

private offices
8

meeting rooms
2



GLASS LIGHTS OPEN CEILING HARD LID CEILING



18200 Von Karman Avenue

suite 200

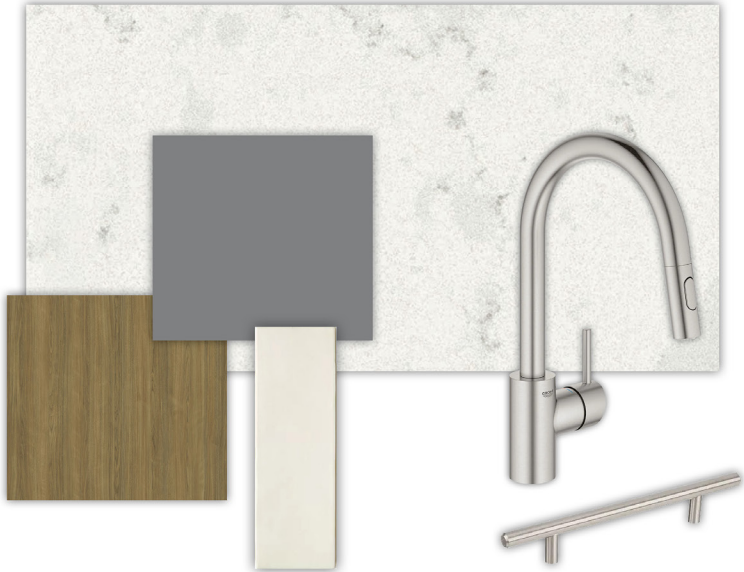


18200 Von Karman Avenue

suite 200



flooring



breakroom



paint scheme



18200 Von Karman Avenue

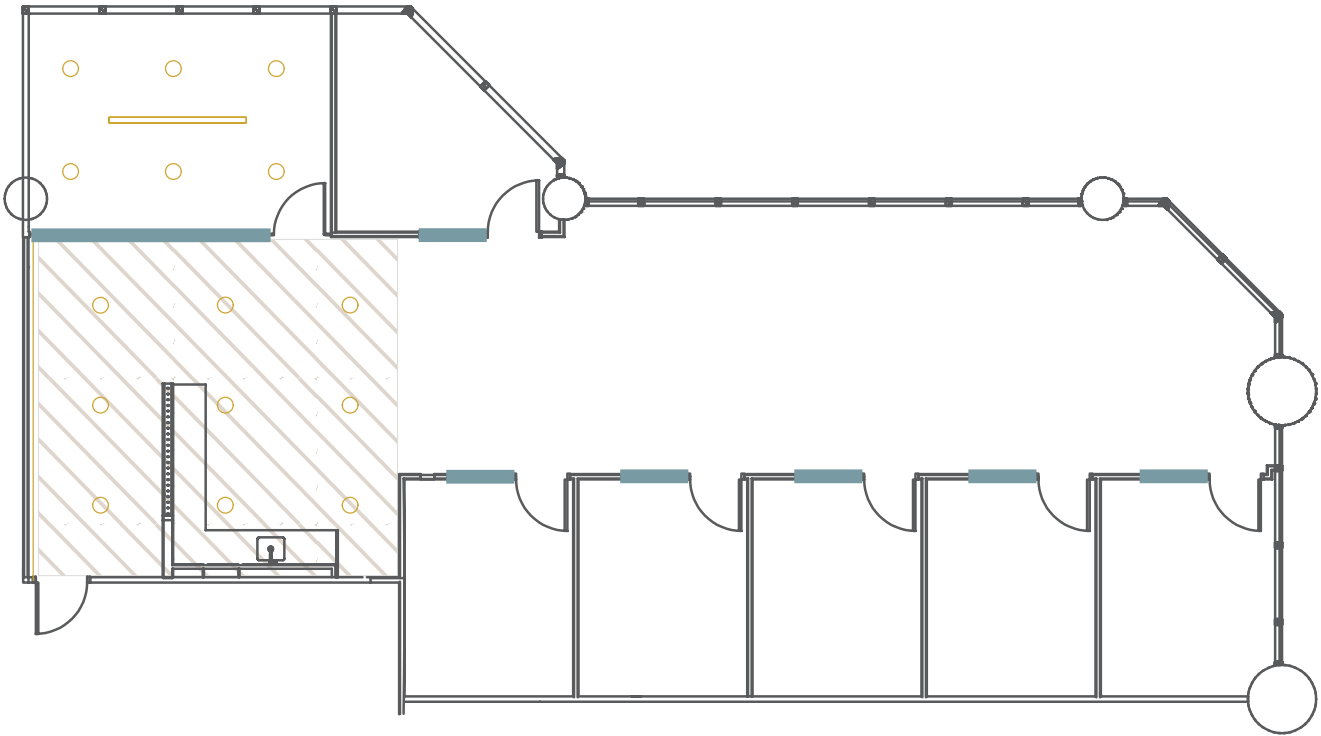
suite 210

total size
±2,765 sqft

team size
12-16

private offices
6

meeting room
1



GLASS LIGHTS HARD LID CEILING



18200 Von Karman Avenue

suite 210



18200 Von Karman Avenue

suite 210



flooring



breakroom



paint scheme



18200 Von Karman Avenue

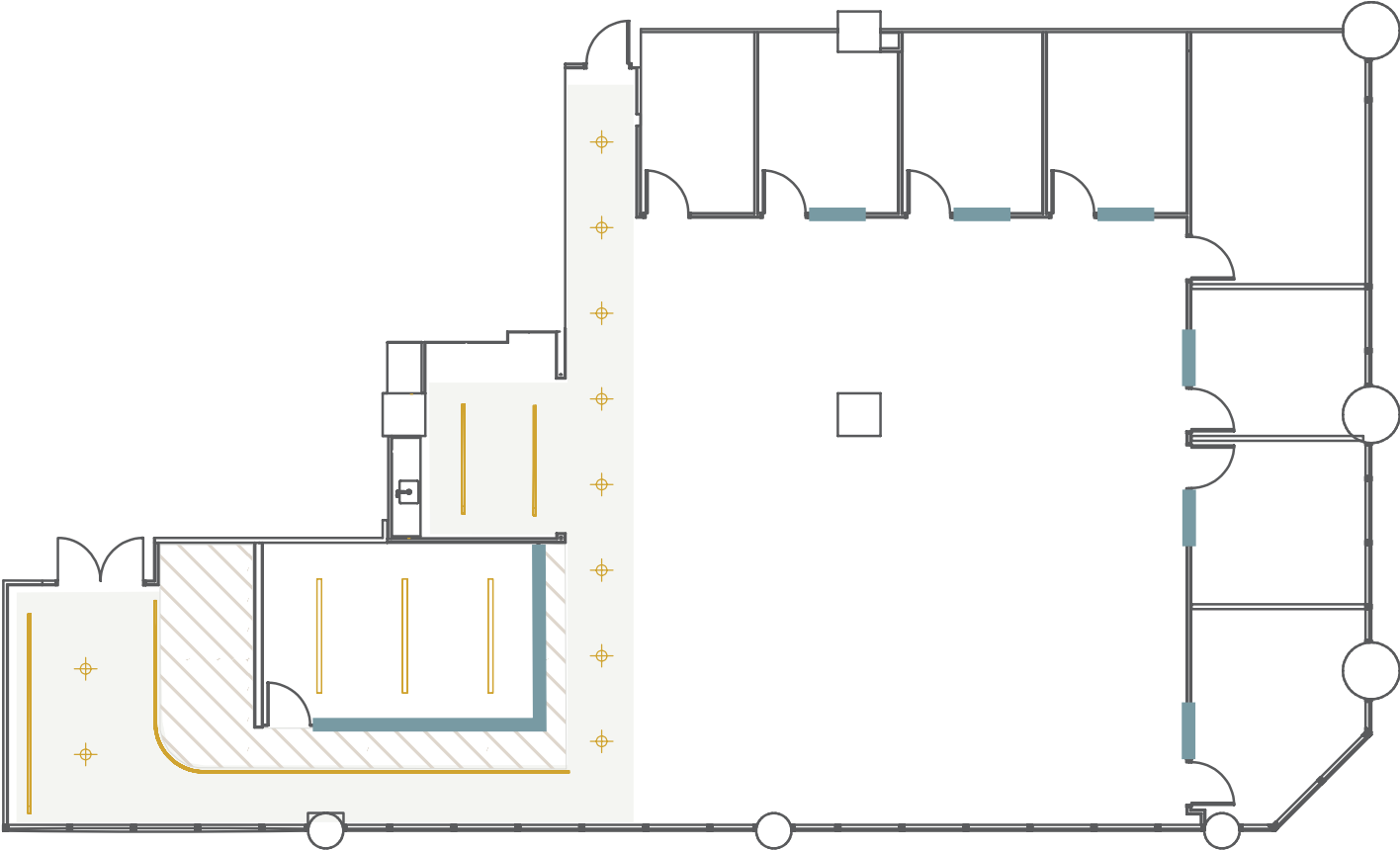
suite 250

total size
±5,046 sqft

team size
22-28

private offices
7

meeting room
1



GLASS LIGHTS OPEN CEILING HARD LID CEILING



18200 Von Karman Avenue

suite 250



flooring



breakroom



paint scheme



18200 Von Karman Avenue

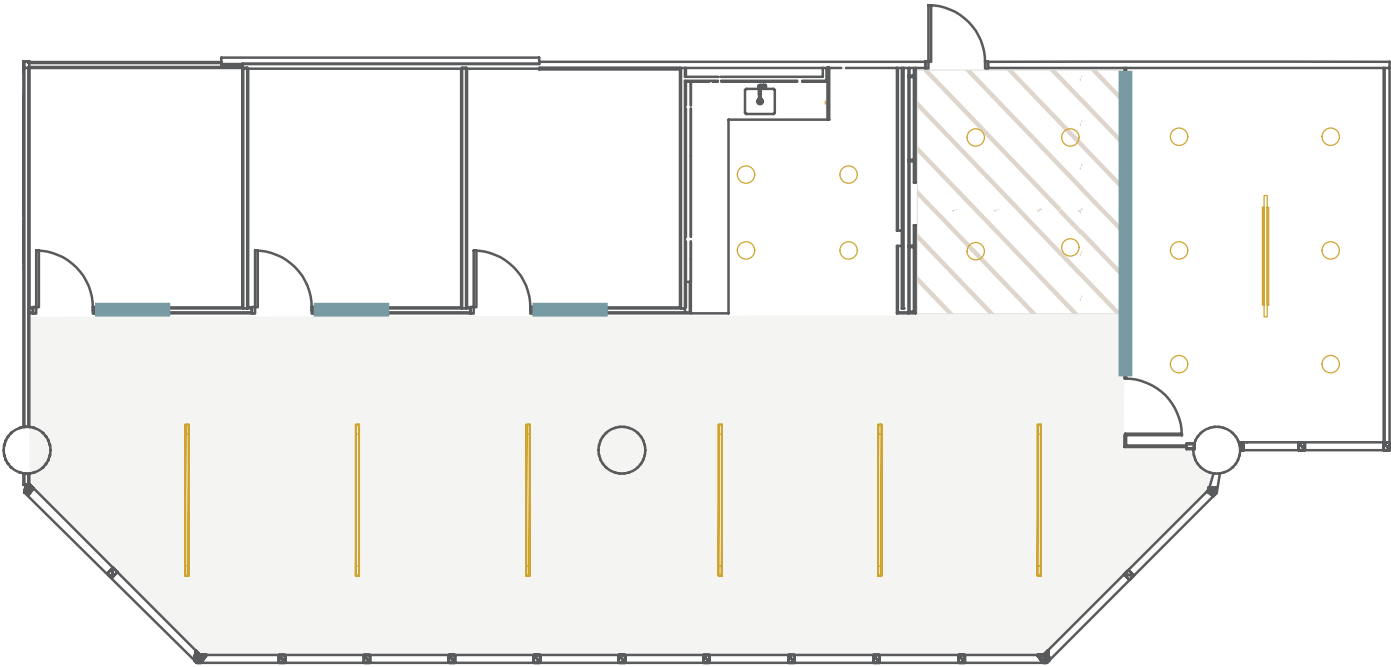
suite 260

total size
±2,469 sqft

team size
10-14

private offices
3

meeting room
1



GLASS LIGHTS OPEN CEILING HARD LID CEILING



18200 Von Karman Avenue

suite 260



flooring



breakroom



paint scheme



18200 Von Karman Avenue

suite 270

total
size

±3,173 sqft

team
size

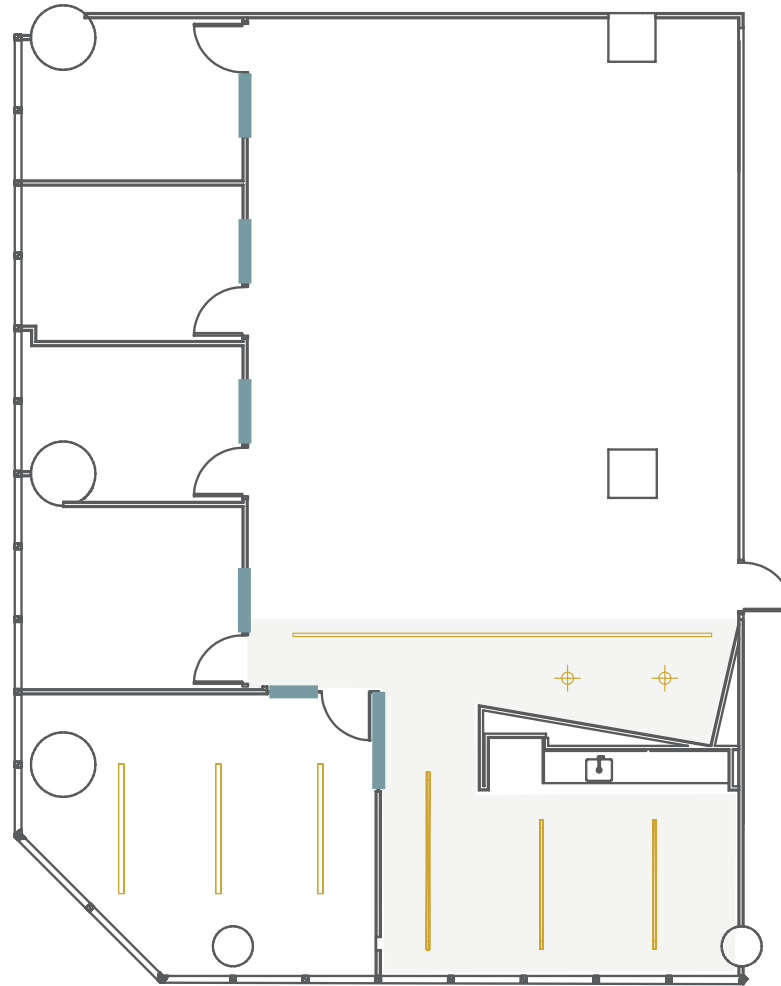
14-18

private
offices

3

meeting
room

1



GLASS LIGHTS OPEN CEILING



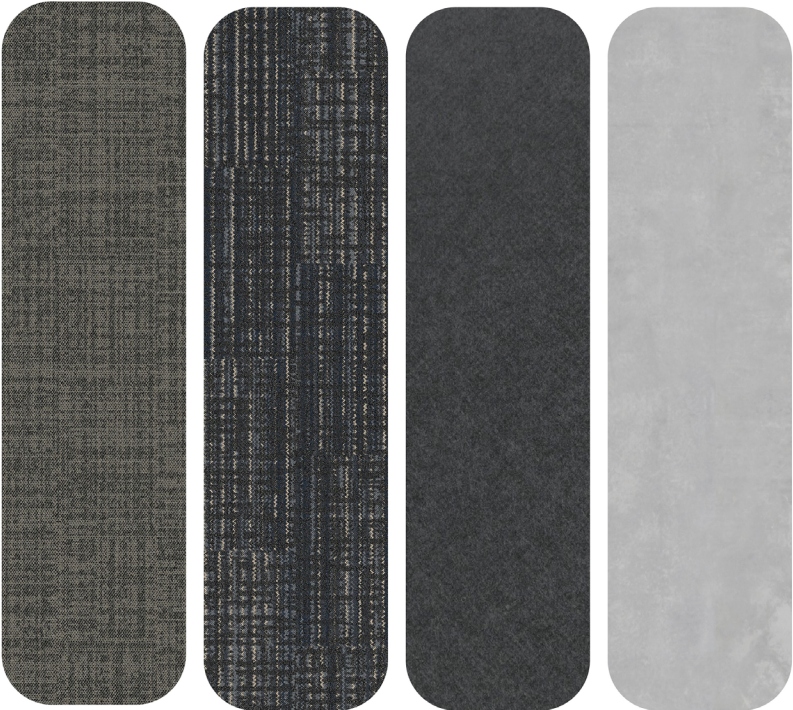
18200 Von Karman Avenue

suite 270

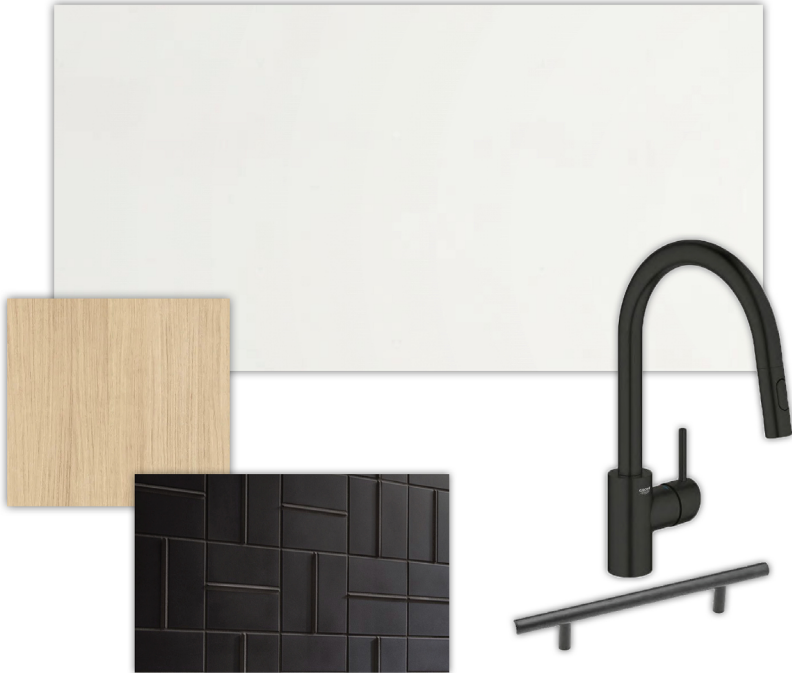


18200 Von Karman Avenue

suite 270



flooring



breakroom



paint scheme



irvine towers[®]



- | | | | | | | | |
|---|---|---|--|---|---|---|---|
|  |  |  |  |  |  |  |  |
| ATM | AUTO
DETAILING | CAFE/
RESTAURANT | CONFERENCE
CENTER | CONVENIENCE
STORE | CUSTOMER
RESOURCE
CENTER | EV
CHARGING | FARMERS
MARKET |
|  |  |  |  |  |  |  | |
| FITNESS
CENTER | FOOD
TRUCKS | JOHN WAYNE
AIRPORT | OUTDOOR
WORKSPACE
(WIFI-ENABLED) | PARKING
OFFICE | PARKING
STRUCTURE | SHUTTLE | |



outdoor workspace



flexplus.com | 949.720.2550

All properties for lease by Irvine Management Company, a licensed real estate broker, DRE LIC. #02041810.
Product and amenities are subject to availability. Images may not be to scale. Not all features available in all communities, furniture not included.
Not a representation or warranty. Flex+ is a registered trademark of Irvine Management Company. ©2026 Irvine Management Company. All Rights Reserved. The Sunwave and Irvine Company are registered trademarks of Irvine Management Company.

Flex+
BY IRVINE COMPANY