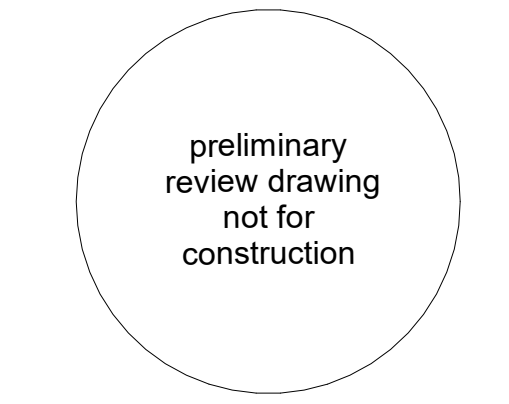
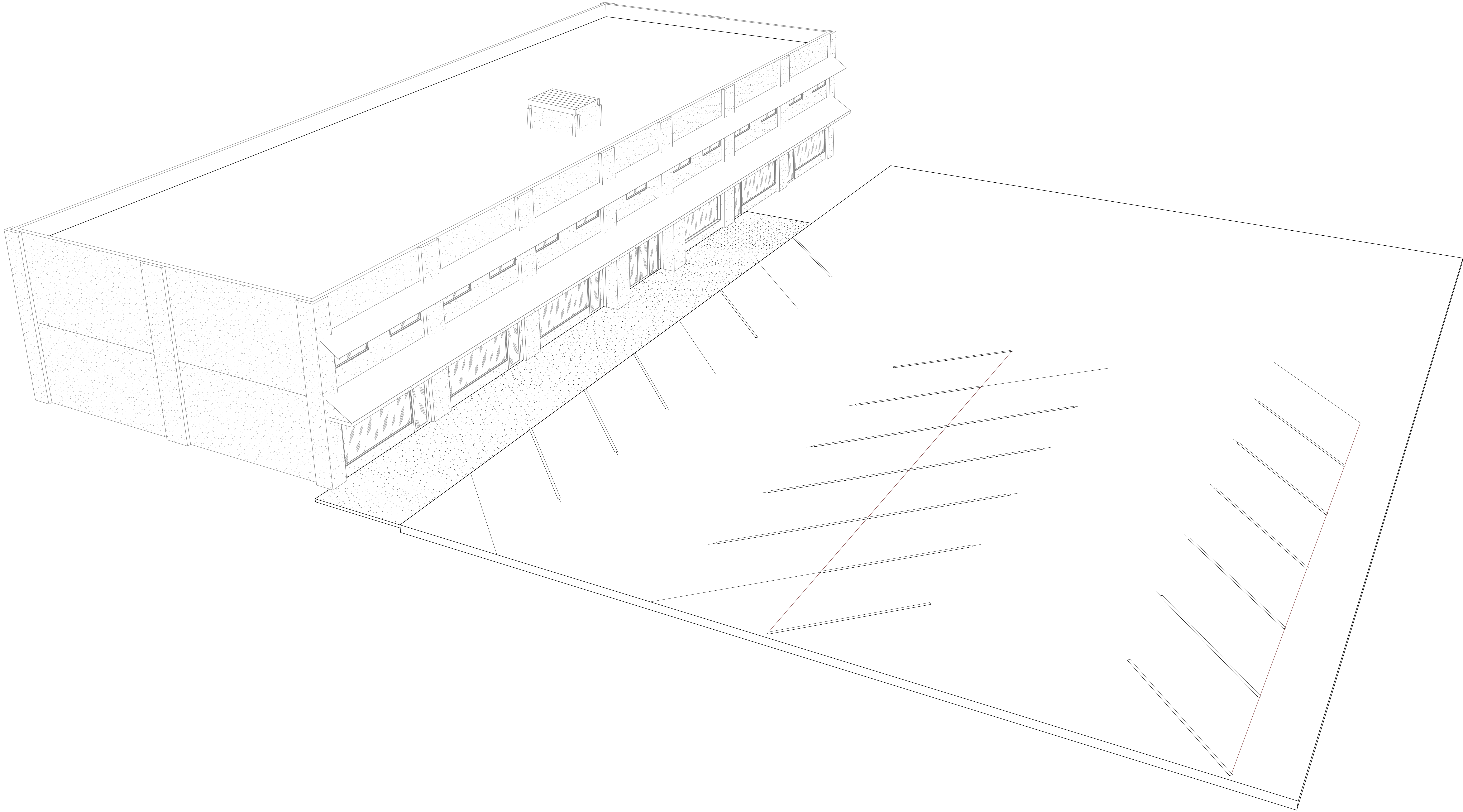
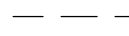

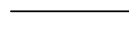




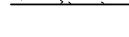

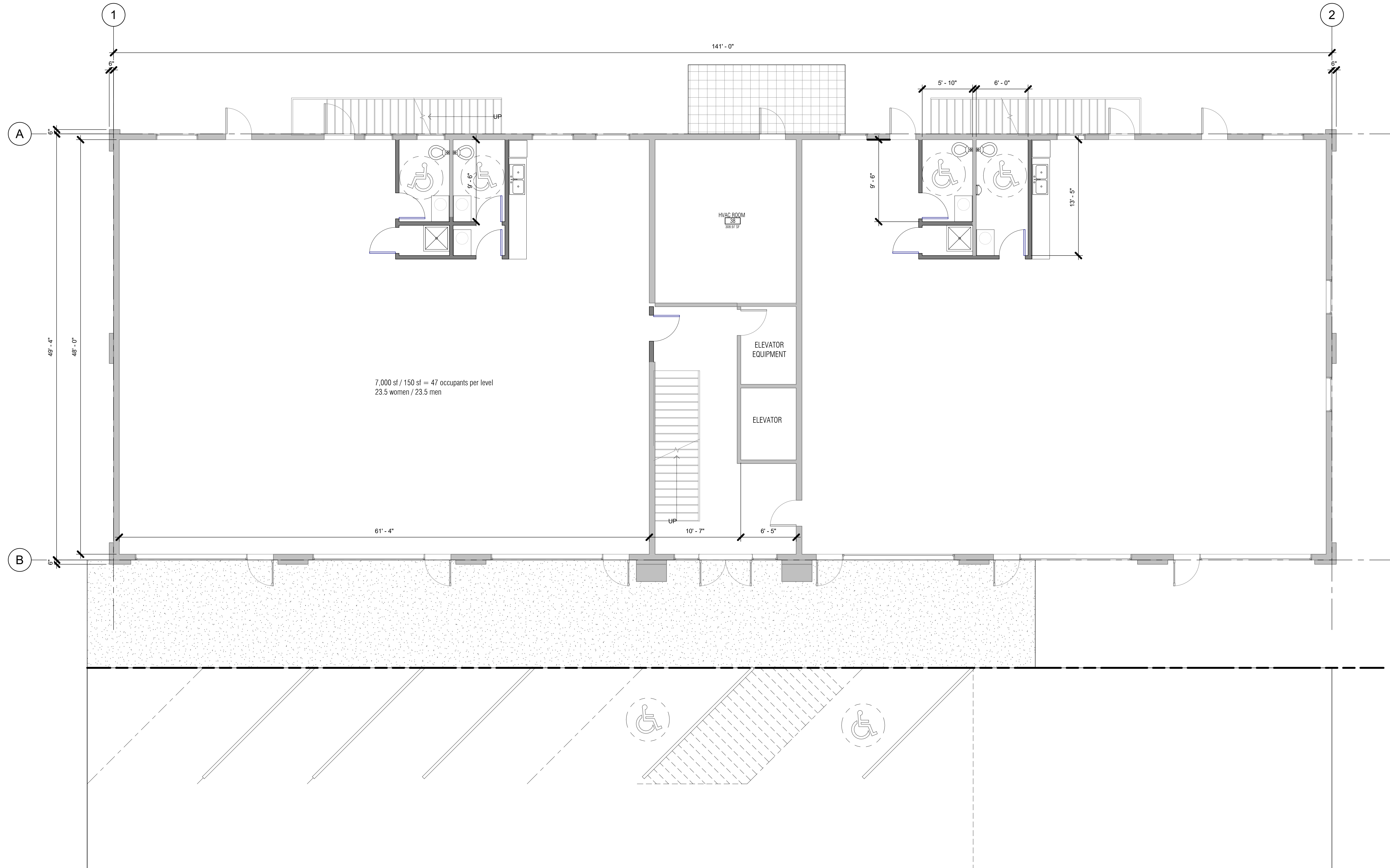


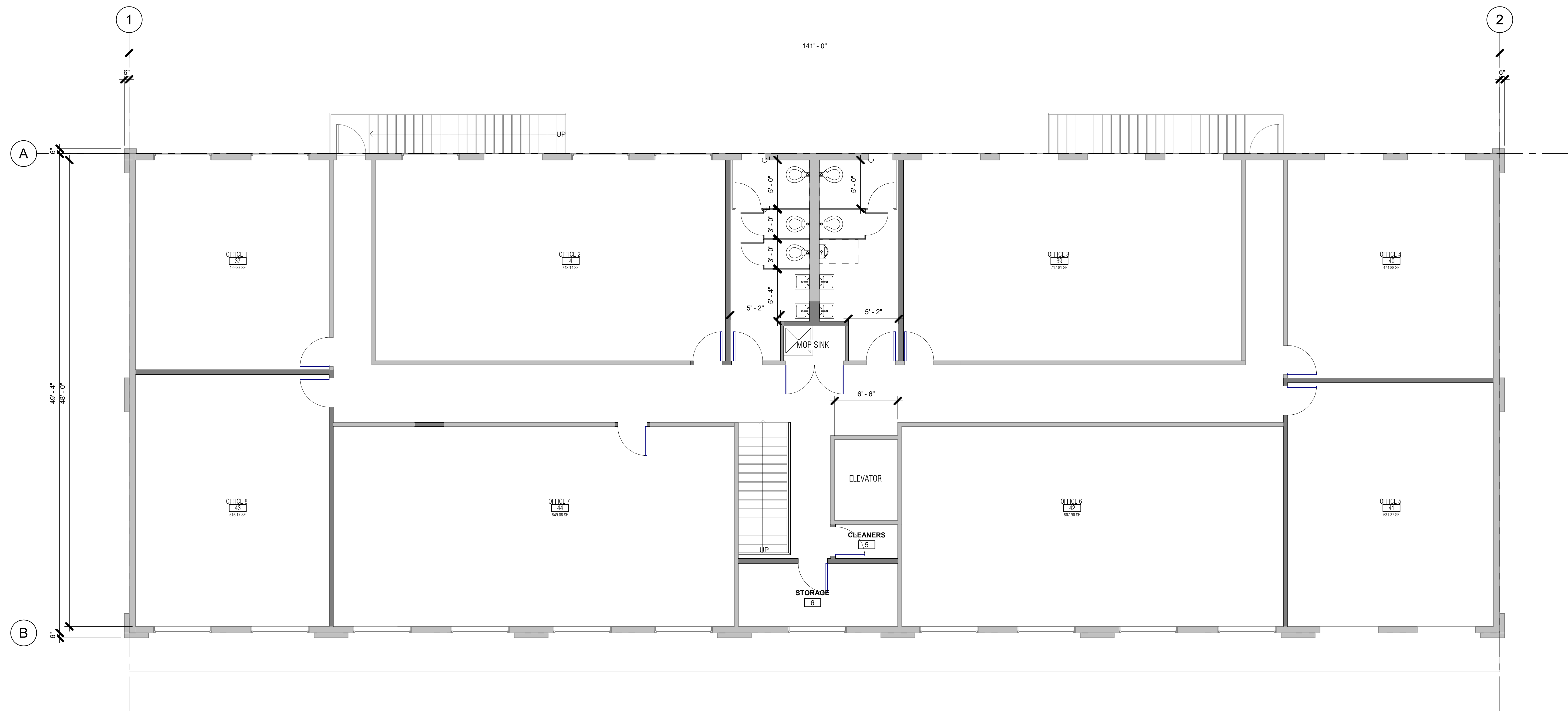
70 LINDEN ST.



Wall Types

-  DEMOLISHED U.N.O.
-  EXISTING TO REMAIN U.N.O.
-  PROPOSED U.N.O.
-  4" INTERIOR STUDWALL U.N.O.
-  NEW 4" INTERIOR STUDWALL U.N.O.
-  6" INTERIOR STUDWALL U.N.O.
-  6" EXTERIOR STUDWALL U.N.O.
-  8" CONCRETE WALL U.N.O.
-  8" CMU WALL U.N.O.





1 SECOND LEVEL PLAN
3/16" = 1'-0"