

1576 SECOND ST

LIVERMORE, CA



ROGER FIELDS

(650) 327-2014 OFFICE
(650) 207-1610 CELL
RFIELDS@PENINSULALAND.COM

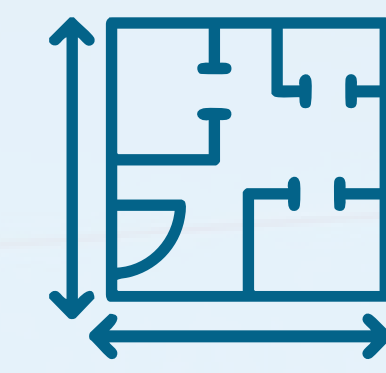
PARKER FIELDS

(650) 327-2014 OFFICE
(650) 208-9979 CELL
PARKER@PENINSULALAND.COM



PENINSULA
land & capital

PROPERTY HIGHLIGHTS



±2,892 SF RETAIL OR OFFICE SPACE AVAILABLE



PRIME DOWNTOWN LIVERMORE LOCATION, OFFERING HIGH ACCESSIBILITY



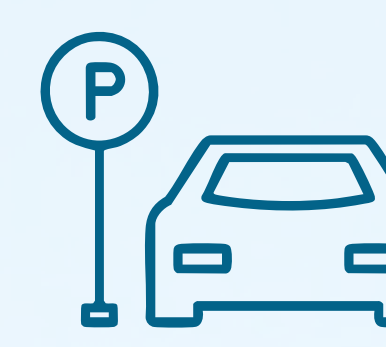
EXCELLENT STOREFRONT VISIBILITY WITH LARGE DISPLAY WINDOWS



STRONG EXPOSURE TO BOTH VEHICLE AND PEDESTRIAN TRAFFIC



AMENITY RICH LOCATION



AMPLE SHARED PARKING LOT BEHIND THE BUILDING AND STREET PARKING

FLOOR PLAN

SUITE B | 778 SF

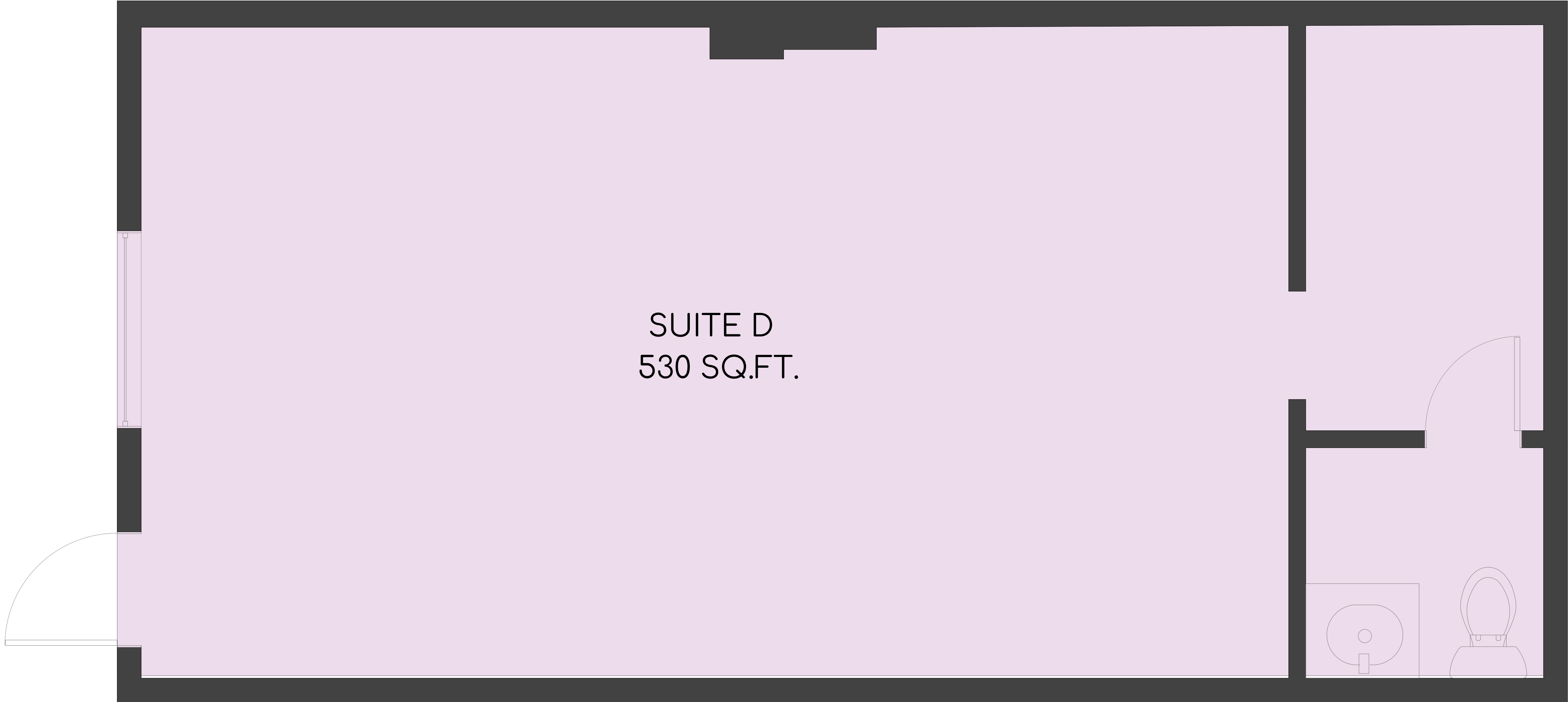
1576 SECOND ST
LIVERMORE, CA



FLOOR PLAN

SUITE D | 530 SF

1576 SECOND ST
LIVERMORE, CA





BANKHEAD THEATER



us bank

WELLS FARGO

PNC

PURPOSEBUILT HOME OF THE *Foodies*

Good Morning Maxwell CREATIVE & EVENT SPACE

Coard's SINCE 1990

7-ELEVEN



1576 SECOND ST

SAFeway

AutoZone

citi

CHASE



FIRST ST

SECOND ST

SURROUNDING AMENITIES

FOR MORE INFORMATION, PLEASE
CONTACT THE LISTING AGENTS:

ROGER FIELDS

(650) 327-2014 OFFICE
(650) 207-1610 CELL
RFIELDS@PENINSULALAND.COM

PARKER FIELDS

(650) 327-2014 OFFICE
(650) 208-9979 CELL
PARKER@PENINSULALAND.COM



© 2026 Peninsula Land & Capital
2390 El Camino Real, Suite 210 | Palo Alto, CA 94306 | 650-327-2014

This information supplied herein is from sources we deem reliable. It is provided without any representation, warranty, or guarantee, expressed or implied as to its accuracy. Prospective Buyer or Tenant should conduct an independent investigation and verification of all matters deemed to be material, including, but not limited to, statements of income and expenses. Consult your attorney, accountant, or other professional advisor.

