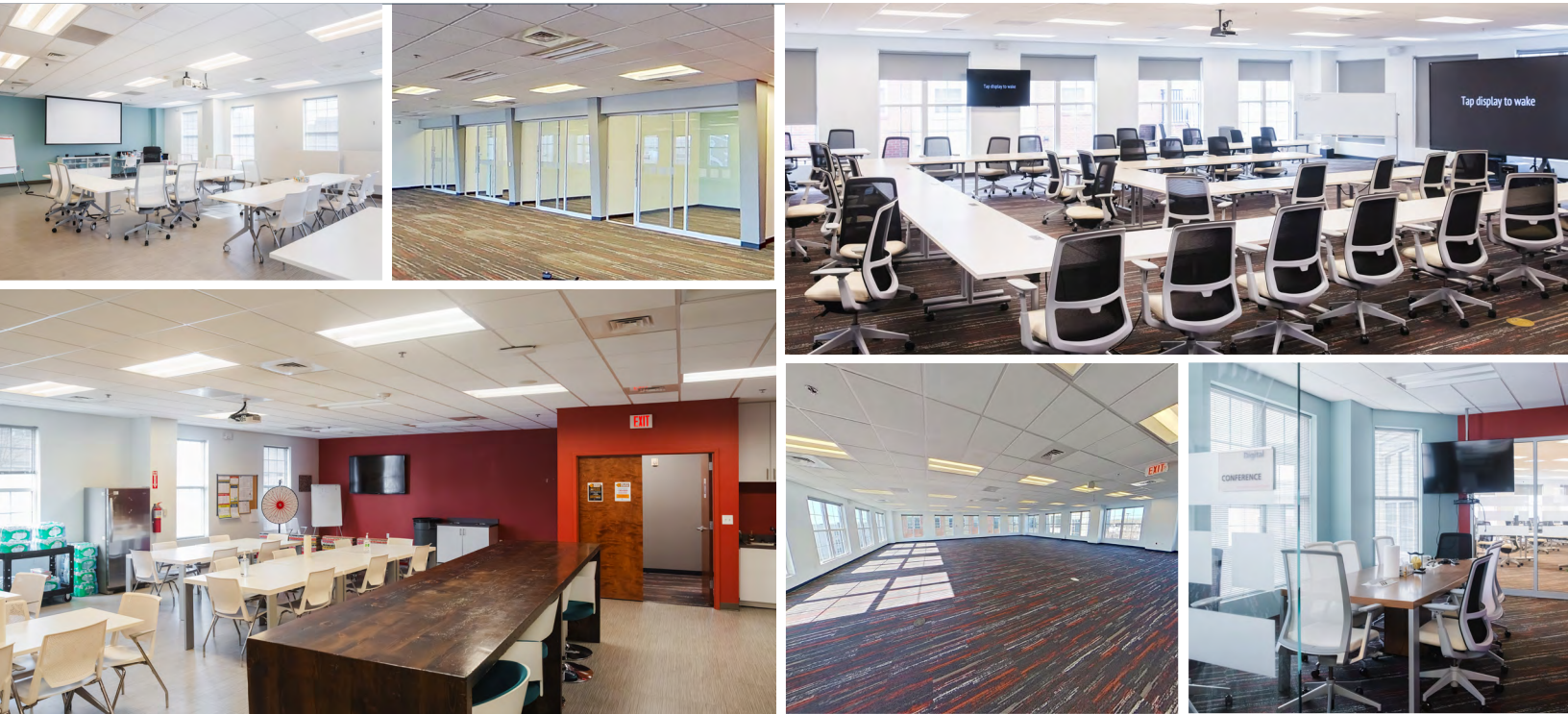


FOR LEASE

# +/- 26,154 RSF (SUITE 300)

Ayrsley "Charleston Row" Building | 2015 Ayrsley Town Blvd. | Charlotte, NC 28273



## PROPERTY HIGHLIGHTS

1 Minute 5 Minutes 10 Minutes 10 Minutes 15 Minutes

### Next Generation Move-In Ready Suites with Modern Finishes and Flexible Layouts for Ultimate Office and Flex Functionality

- **Walkable Community:** Ayrsley is Southwest Charlotte's most walkable community, conveniently located off I-485 and South Tryon, promoting a vibrant lifestyle with easy access to amenities.
- **Move-in Ready Suites:** Modern finishes and flexible layouts in suites provide ultimate functionality for office and flex uses, allowing businesses to adapt to their needs.
- **Access:** Dedicated tenant entrances ensure ease of access at all hours, with 24/7 access and secure after-hours key-card entry for peace of mind.
- **Parking:** Ample free surface parking directly in front of tenant suites, along with an adjacent shared parking deck, ensures convenient access for employees and guests, featuring a parking ratio of 4:1,000.
- **Convenience:** A short 5-minute walk to a variety of on-campus restaurants, hotels, and a multiplex cinema enhances the overall experience for tenants and visitors.
- **Prime Location:** Just a 15-minute drive to South End and Uptown Charlotte, and 10 minutes to Charlotte Douglas International Airport, offering easy access to key areas.
- **Value:** Enjoy the amenities of Uptown and South End without the cost or commute, making Ayrsley an attractive option for businesses and residents alike.

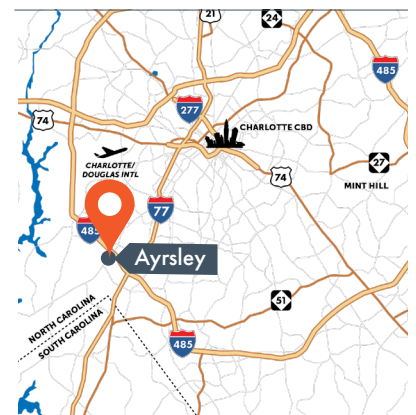
[CLICK HERE FOR A VIRTUAL TOUR](#)

### AVAILABILITY

26,154 RSF (Suite 300)

**Available** Immediately

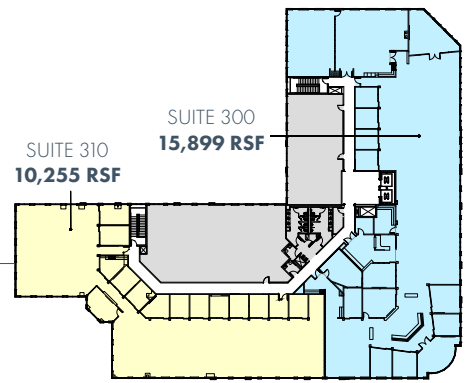
### LOCATION



FOR LEASE

# +/- 26,154 RSF (SUITE 300)

Ayrley "Charleston Row" Building | 2015 Ayrley Town Blvd. | Charlotte, NC



## SUITE 300 | 26,154 RSF

Furniture shown is for representative purposes only.  
Furniture is not included and the space is vacant.



## SUITE 300 HIGHLIGHTS

- 102 workstations (6x8)
- 22 total private offices including 4 Executive Offices
- Reception Area with seating
- 2 Large Conference Rooms to seat 12
- 2 Medium Conference Rooms to seat 8
- 1 Large Break Room along the windows with extensive seating
- Training Room to seat 30 (Note – The Training Room can be combined with the Break Room via a sliding partition to host large “Town Hall” style meetings)
- 2 small break rooms
- Various soft seating & collaborative areas throughout the space

FOR LEASE

# +/- 26,154 RSF (SUITE 300)

Ayrsey "Charleston Row" Building | 2015 Ayrsey Town Blvd. | Charlotte, NC



## Sip & Savor

Indulge in lavish celebrations, family-friendly dining, or fun happy hours with friends – explore the diverse options available in the neighborhood!

- Clean Eatz
- Famous Toastery
- Harry's Grille & Tavern
- Jeff's Bagel Run
- MAI Japanese Restaurant
- Portofino's Italian Restaurant
- Salsa's Mexican Restaurant

## Out & About

Discover live entertainment, a premier cinema, free community events, and endless family activities! Whether you're planning a night out or a day of fun, Ayrsey has it all.

- Piedmont Social House
- Ayrsey Event Lawn
- Ayrsey Grand Cinemas
- The Corner Bar

## Next Generation Spaces

Ayrsey offers limitless advantages, including state-of-the-art buildings, ample parking, and exceptional services for today's workforce. When employees succeed, businesses thrive. Explore thoughtfully designed workspaces in a vibrant community.

- Arcade Office Building
- Charleston Row Office Building
- Kings Parade Office Building
- One Silver Crescent Office Building
- Two Silver Crescent Office Building

## Retail Therapy Awaits

Walkable streets, welcoming faces, and an expanding array of shops and services come together to create a top-notch retail experience. With boutiques, salons, medical offices, and gyms all in one place, running errands has never been easier!

- Ayrsey Family Dentistry
- Ayrsey Nail Bar
- Copy That
- Joyful Sounds School of Music and Arts
- Prestige Med Spa and Wellness Center
- Regions Bank

## Unpack Your Bags

Staying at Ayrsey means endless adventures await right at your doorstep! With four hotels on campus, business and leisure travelers can easily access Charlotte Douglas International Airport and enjoy nearby attractions like Lake Wylie, Carowinds, and the U.S. National Whitewater Center.

- Embassy Suites
- Hilton Garden Inn
- Homewood Suites
- TRU by Hilton

## Vibrant Living

Living at Ayrsey means everything you crave is just a stroll away! In the vibrant and lively neighborhood of Ayrsey in Southwest Charlotte, convenience takes on a whole new meaning.

- Ayrsey Lofts – North Building
- Ayrsey Lofts – South Building
- Broadstone Ayrsey
- Gramercy Square at Ayrsey