



BLDG F // SUITE 232 // FLOORPLAN

SUITE DATA:

OFFICE AREA 1,386 SF

BLDG. F // SUITE 232

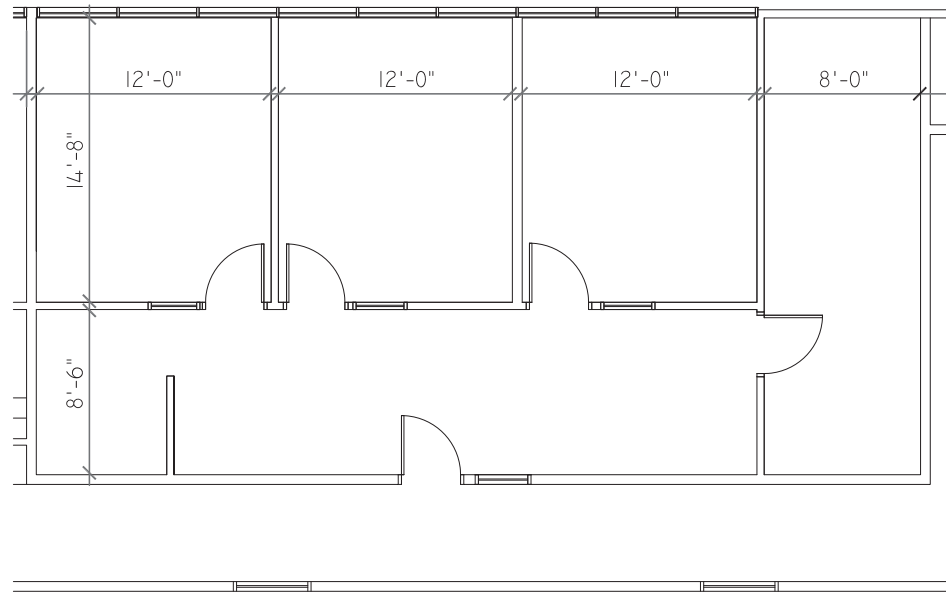
» AVAILABLE SF: 1,386

Keith Bell
o. 303.260.4332
keith.bell@nmrk.com

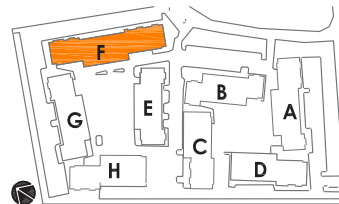
Newmark
1800 Larimer Street, Suite 1700
Denver, CO 80202
ngkf.com

14 INVERNESS DRIVE EAST
ENGLEWOOD, CO 80112

NEWMARK



SITE KEY PLAN:



BUILDING KEY PLAN:

