

FOR LEASE

**30,608 SF**

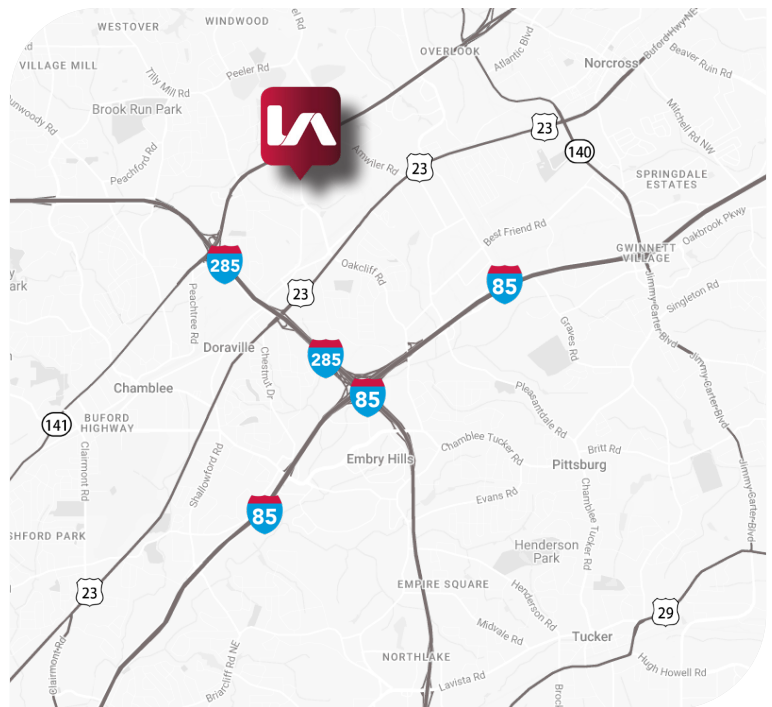
4571 Winters Chapel Road, Atlanta, GA 30360



**PROPERTY OVERVIEW**

- AVAILABLE SF:** 30,608 SF
- OFFICE SF:** 2,997 SF
- WAREHOUSE SF:** 27,611 SF
- LOADING DOORS:** 6 DH (1 pit, 4 EOD)  
1 DI
- CLEAR HEIGHT:** 24'
- SPRINKLER:** Wet System
- POWER:** 120/208V, 400A (estimated)

IREM Certified Sustainable Property



**CRAIG VIERGEVER, SIOR**  
 cviergever@lee-associates.com  
 O 404.442.2843  
 C 404.281.4481

**TYLER FLEMMING**  
 tflemming@lee-associates.com  
 O 404.442.2855  
 C 404.694.5661

**CORT VOLANDT**  
 cvolandt@lee-associates.com  
 O 404.442.2801  
 C 404.803.6138

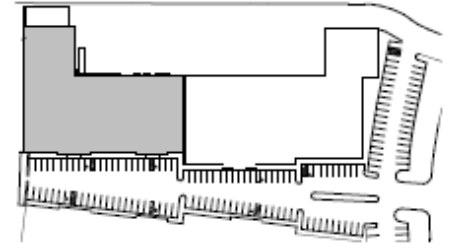
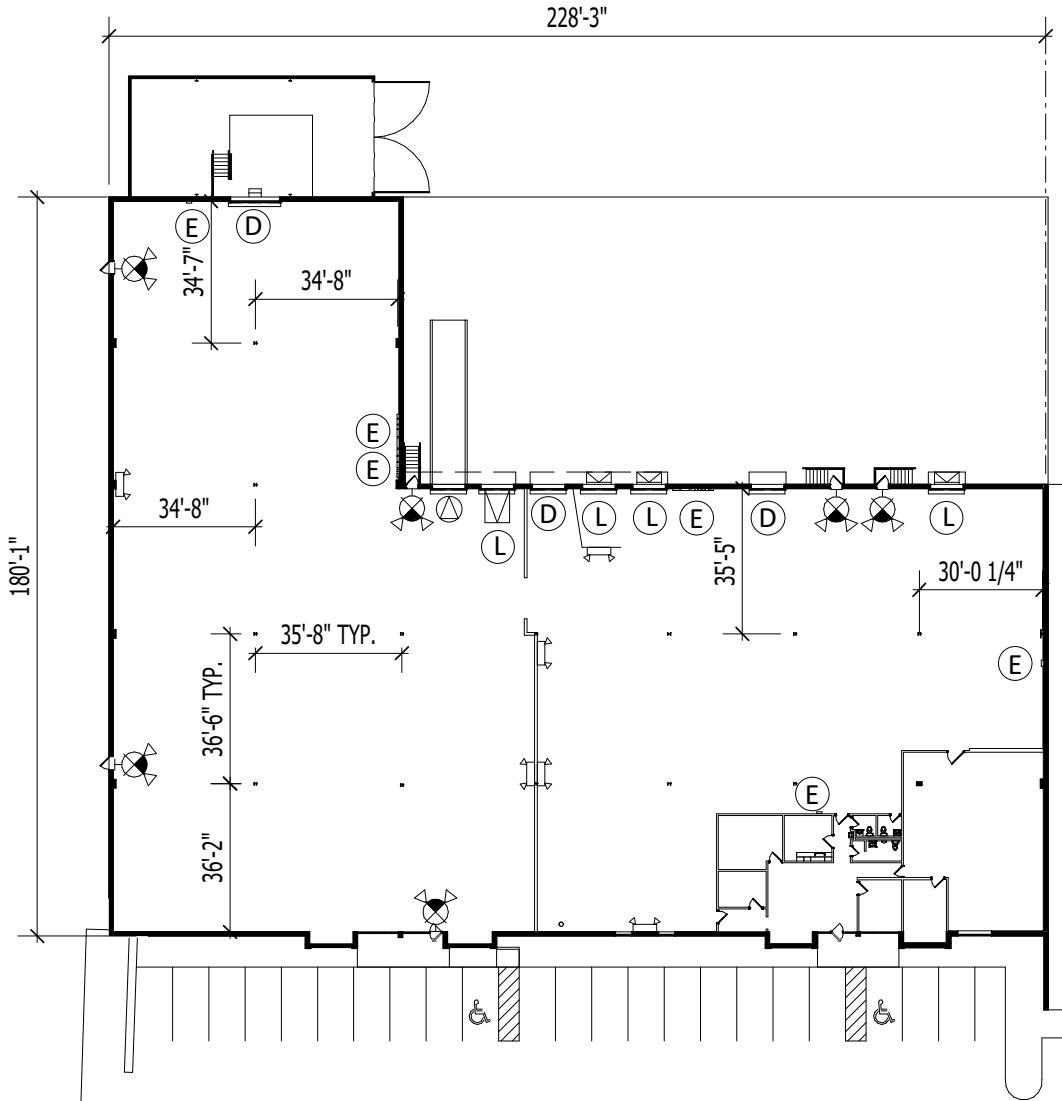


All information furnished regarding property for sale, rental, or financing is from sources deemed reliable, but not warranty or representation is made to the accuracy thereof and same is submitted to errors, omissions, change of price, rental or other conditions prior to sale, lease, or financing or withdrawal without notice. No liability of any kind is to be imposed on the broker herein.

FOR LEASE

**30,608 SF**

4571 Winters Chapel Road, Atlanta, GA 30360



KEY PLAN

**CRAIG VIERGEVER, SIOR**  
 cviergever@lee-associates.com  
 O 404.442.2843  
 C 404.281.4481

**TYLER FLEMMING**  
 tflemming@lee-associates.com  
 O 404.442.2855  
 C 404.694.5661

**CORT VOLANDT**  
 cvolandt@lee-associates.com  
 O 404.442.2801  
 C 404.803.6138

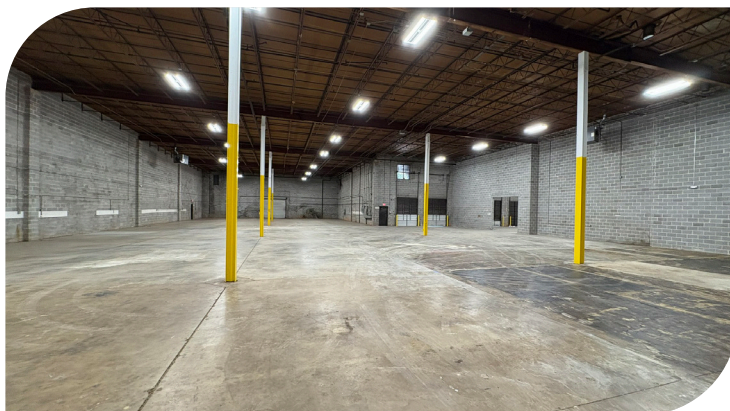
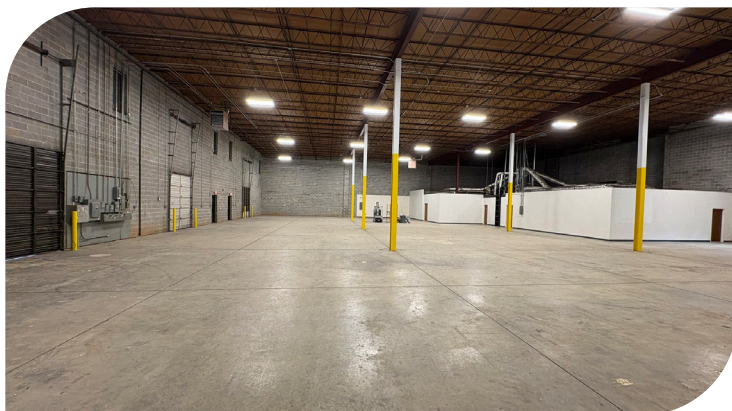
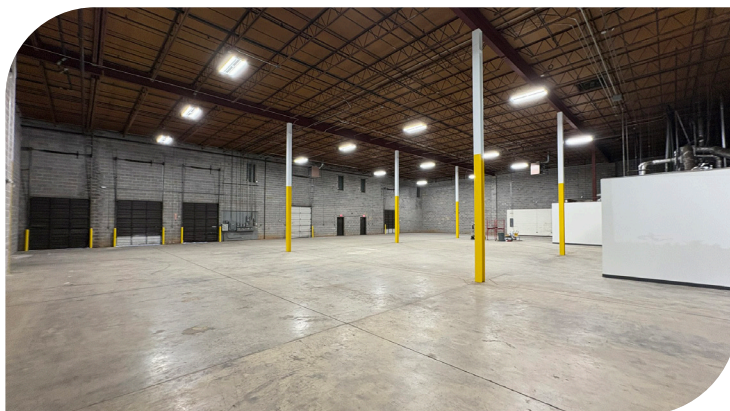


All information furnished regarding property for sale, rental, or financing is from sources deemed reliable, but not warranty or representation is made to the accuracy thereof and same is submitted to errors, omissions, change of price, rental or other conditions prior to sale, lease, or financing or withdrawal without notice. No liability of any kind is to be imposed on the broker herein.

FOR LEASE

**30,608 SF**

4571 Winters Chapel Road, Atlanta, GA 30360



**CRAIG VIERGEVER, SIOR**  
cviergever@lee-associates.com  
O 404.442.2843  
C 404.281.4481

**TYLER FLEMMING**  
tflemming@lee-associates.com  
O 404.442.2855  
C 404.694.5661

**CORT VOLANDT**  
cvolandt@lee-associates.com  
O 404.442.2801  
C 404.803.6138



All information furnished regarding property for sale, rental, or financing is from sources deemed reliable, but not warranty or representation is made to the accuracy thereof and same is submitted to errors, omissions, change of price, rental or other conditions prior to sale, lease, or financing or withdrawal without notice. No liability of any kind is to be imposed on the broker herein.