



# SPACE FOR LEASE

23801 E Appleway Ave.

Spokane Valley, WA 99216



REAL ESTATE

**\$20.00 SF/YR**

**MODIFIED GROSS LEASE**

**PATRICK LIBEY**

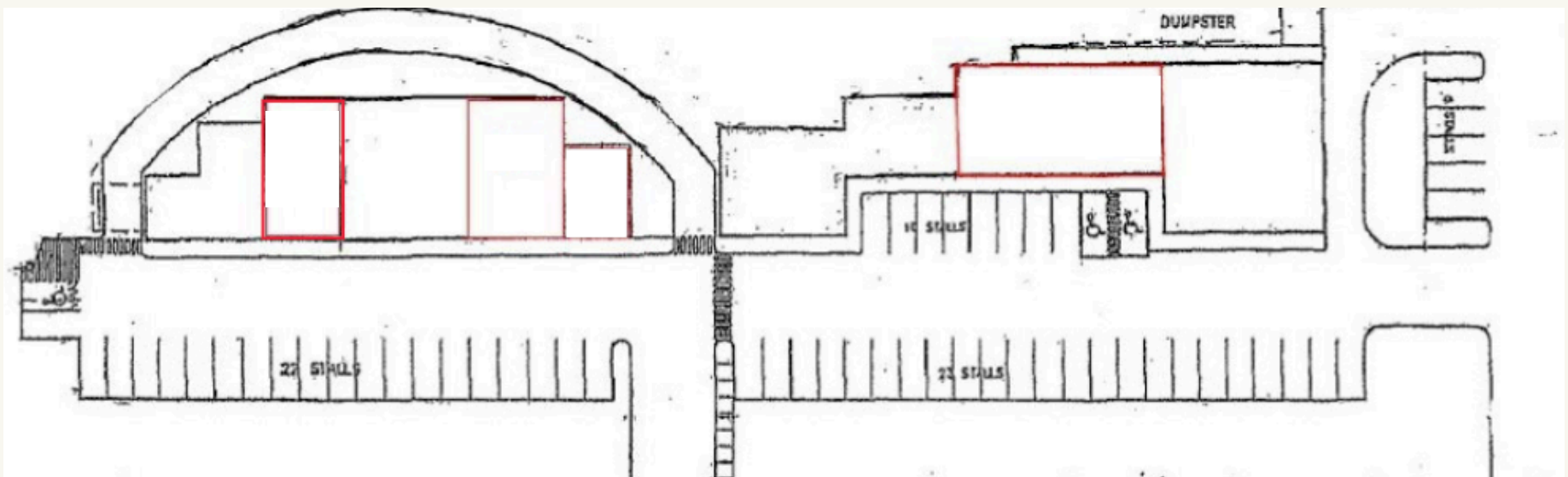
**(208)669-2231**

**PATRICK@LIBEYHOMES.COM**

# RETAIL FOR LEASE

23801 E. Appleway Ave.  
Liberty Lake, WA

- **SUITE 230**
- **2,065 SF**
- **HEARTLAND MALL**
- **CURRENTLY OFFICE SPACE**
- **BUILDING SIZE 12,478 SF**
- **BUILT IN 2001**
- **PRIME LOCATION IN LIBERTY LAKE**
- **WITHIN 0.5 MI TO PLATTED 400 NEW BUILD DEVELOPMENT BY LENNAR**



**PATRICK LIBEY**

**(208)669-2231**

**PATRICK@LIBEYHOMES.COM**