

1563 NORTH MILWAUKEE AVENUE

wicker park / chicago, il



MID-AMERICA® URBAN

AVAILABLE MAY 2026



1563 NORTH MILWAUKEE AVENUE

wicker park / chicago, il

SPACE DETAILS

ADDRESS

1563 N. Milwaukee Avenue
Chicago, IL 60622

NEIGHBORING RETAILERS



Levi's



Lids

Abercrombie
& Fitch



SAINT ALFRED

URBAN
OUTFITTERS

AVAILABILITY

2,944 RSF

FEATURES

Second generation retail space on one of the prime blocks of Milwaukee Avenue in Chicago's Wicker Park neighborhood

Within one block of the Damen Blue Line El Stop with more than 1.22M riders annually

Surrounded by a unique mix of international, national and local retailers and restaurateurs

Approximately 2,097 square feet of basement storage included

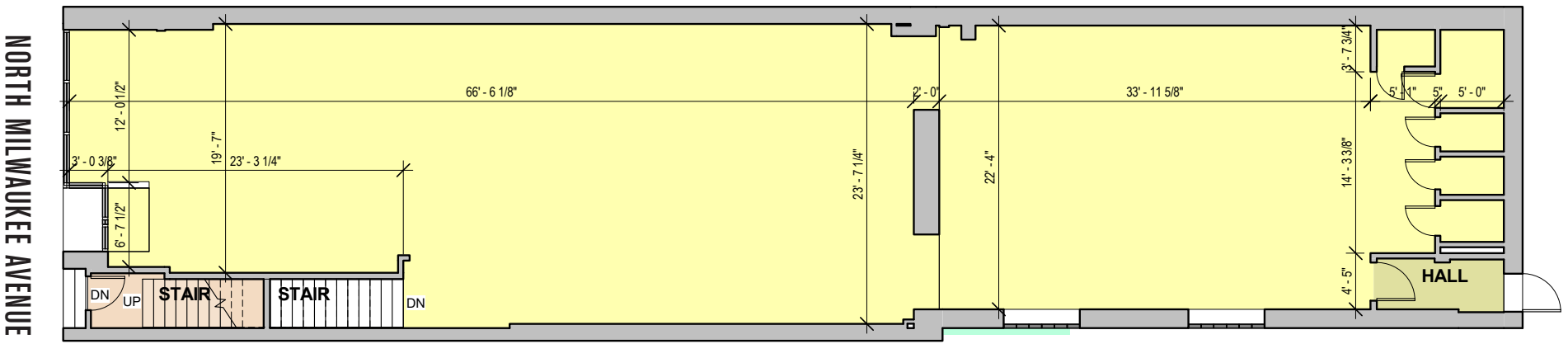
DEMOGRAPHICS

	0.5 Miles	1 Miles	1.5 Miles
POPULATION	18,919	63,605	127,821
HOUSEHOLDS	9,519	32,134	62,693
AVG HOUSEHOLD INCOME	\$215,386	\$188,308	\$187,434
DAYTIME POPULATION	17,265	54,247	116,910

1563 NORTH MILWAUKEE AVENUE

wicker park / chicago, il

FLOOR PLAN



SITE DETAILS

2,944 RSF





let's **BIG**
talk.

IDEAS?

LARA KEENE

Mid-America Real Estate Corporation

630.481.4038

LKeene@MidAmericaGrp.com

WESTIN KANE

Mid-America Real Estate Corporation

630.954.7447

WKane@MidAmericaGrp.com



MID-AMERICA[®] URBAN