



R&D Space for Sublease/Direct Deal Prologis Park Bayside

47456 Fremont Boulevard, Fremont, CA



NEW REDUCED RATE!



Property Highlights

- ±6,000 SF
- ±50% office
- 200 Amps 277/480V 3 Phase
- 18' clear height in warehouse
- New carpet
- Large office/conference room
- Kitchenette
- 2 bathrooms
- 1 grade level door
- 1 dock high door
- Rate: \$1.85 NNN

±6,000 SF

Minutes from
New Warm Springs
BART Station

Easy access to I-880,
I-680 and Hwy 237

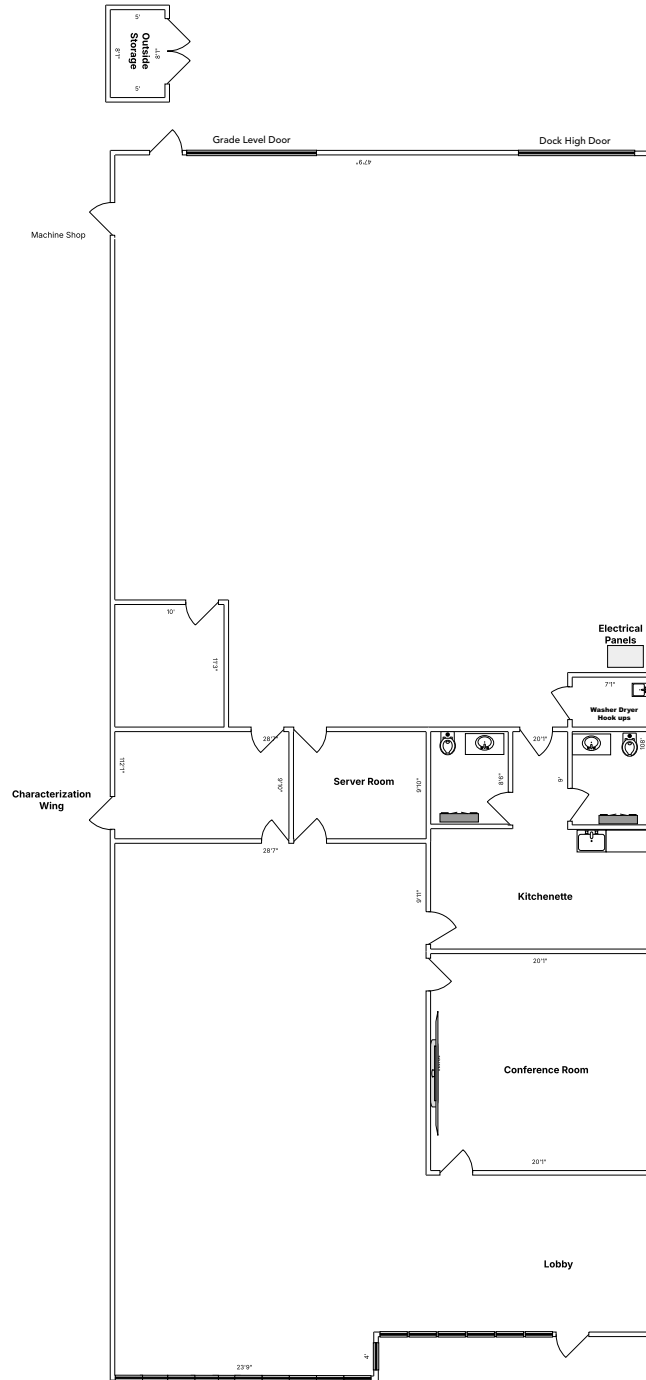
Brian Mason, SIOR | Founder & Principal | 1-408-472-9498 | brian@ebmasoncre.com | Lic. 01229363

Scott Borgia, SIOR | Executive Vice President | 1-408-221-4499 | scott.borgia@outlook.com | Lic. 00903600



R&D Space for Sublease/Direct Deal Prologis Park Bayside 47456 Fremont Boulevard, Fremont, CA

Floor Plan



Brian Mason, SIOR | Founder & Principal | 1-408-472-9498 | brian@ebmasoncre.com | Lic. 01229363
Scott Borgia, SIOR | Executive Vice President | 1-408-221-4499 | scott.borgia@outlook.com | Lic. 00903600



R&D Space for Sublease/Direct Deal Prologis Park Bayside

47456 Fremont Boulevard, Fremont, CA



Brian Mason, SIOR | Founder & Principal | 1-408-472-9498 | brian@ebmasoncre.com | Lic. 01229363
Scott Borgia, SIOR | Executive Vice President | 1-408-221-4499 | scott.borgia@outlook.com | Lic. 00903600



R&D Space for Sublease/Direct Deal Prologis Park Bayside

47456 Fremont Boulevard, Fremont, CA



Brian Mason, SIOR | Founder & Principal | 1-408-472-9498 | brian@ebmasoncre.com | Lic. 01229363
Scott Borgia, SIOR | Executive Vice President | 1-408-221-4499 | scott.borgia@outlook.com | Lic. 00903600