




# FOR LEASE

749 N CONEY AVENUE  
AZUSA | CA 91702



±10,440 SF  
AVAILABLE



±1,500 SF  
OFFICE SPACE



HVAC  
WAREHOUSE



3  
GL DOORS

FOR MORE INFORMATION PLEASE CONTACT:

**LUI SALAZAR**

**ASSOCIATE VICE PRESIDENT**

P: 213.270.2229 | M: 626.818.0444

lsalazar@daumcommercial.com

CADRE #02118236

**ALONDRA SALAZAR**

**ASSOCIATE**

P: 213.270.2226

asalazar@daumcommercial.com

CADRE #02222628

Although all information is furnished regarding for sale, rental or financing is from sources deemed reliable, such information has not been verified and no express representation is made nor is any to be implied as to the accuracy thereof, and it is submitted subject to errors, omissions, changes of price, rental or other conditions, prior sale, lease or financing, or withdrawal without notice.

 **DAUM**  
COMMERCIAL REAL ESTATE SERVICES

±10,440 SF WAREHOUSE/OFFICE

±10,440 SF

WAREHOUSE/OFFICE

**FOR LEASE**  
749 N CONEY AVENUE  
AZUSA | CA 91702



### SPACE HIGHLIGHTS

- ±10,440 SF Available
- Great for Manufacturing
- 400 Amps of 240 Volts
- Secured Yard
- Warehouse Fully HVAC
- Flexible Terms
- Fully Refurbished
- Broker Owned
- Friendly Neighbor (Print shop)
- Available Now

FOR MORE INFORMATION PLEASE CONTACT:

**LUI SALAZAR**  
ASSOCIATE VICE PRESIDENT

**P: 213.270.2229 | M: 626.818.0444**  
lsalazar@daumcommercial.com  
CADRE #02118236

**ALONDRA SALAZAR**  
ASSOCIATE

**P: 213.270.2226**  
asalazar@daumcommercial.com  
CADRE #02222628

Although all information is furnished regarding for sale, rental or financing is from sources deemed reliable, such information has not been verified and no express representation is made nor is any to be implied as to the accuracy thereof, and it is submitted subject to errors, omissions, changes of price, rental or other conditions, prior sale, lease or financing, or withdrawal without notice.

**DAUM**  
COMMERCIAL REAL ESTATE SERVICES

±10,440 SF

WAREHOUSE/OFFICE

749 N CONEY AVENUE  
AZUSA | CA 91702

**FOR LEASE**



FOR MORE INFORMATION PLEASE CONTACT:

**LUI SALAZAR**  
ASSOCIATE VICE PRESIDENT

**P: 213.270.2229 | M: 626.818.0444**  
lsalazar@daumcommercial.com  
CADRE #02118236

**ALONDRA SALAZAR**  
ASSOCIATE

**P: 213.270.2226**  
asalazar@daumcommercial.com  
CADRE #02222628

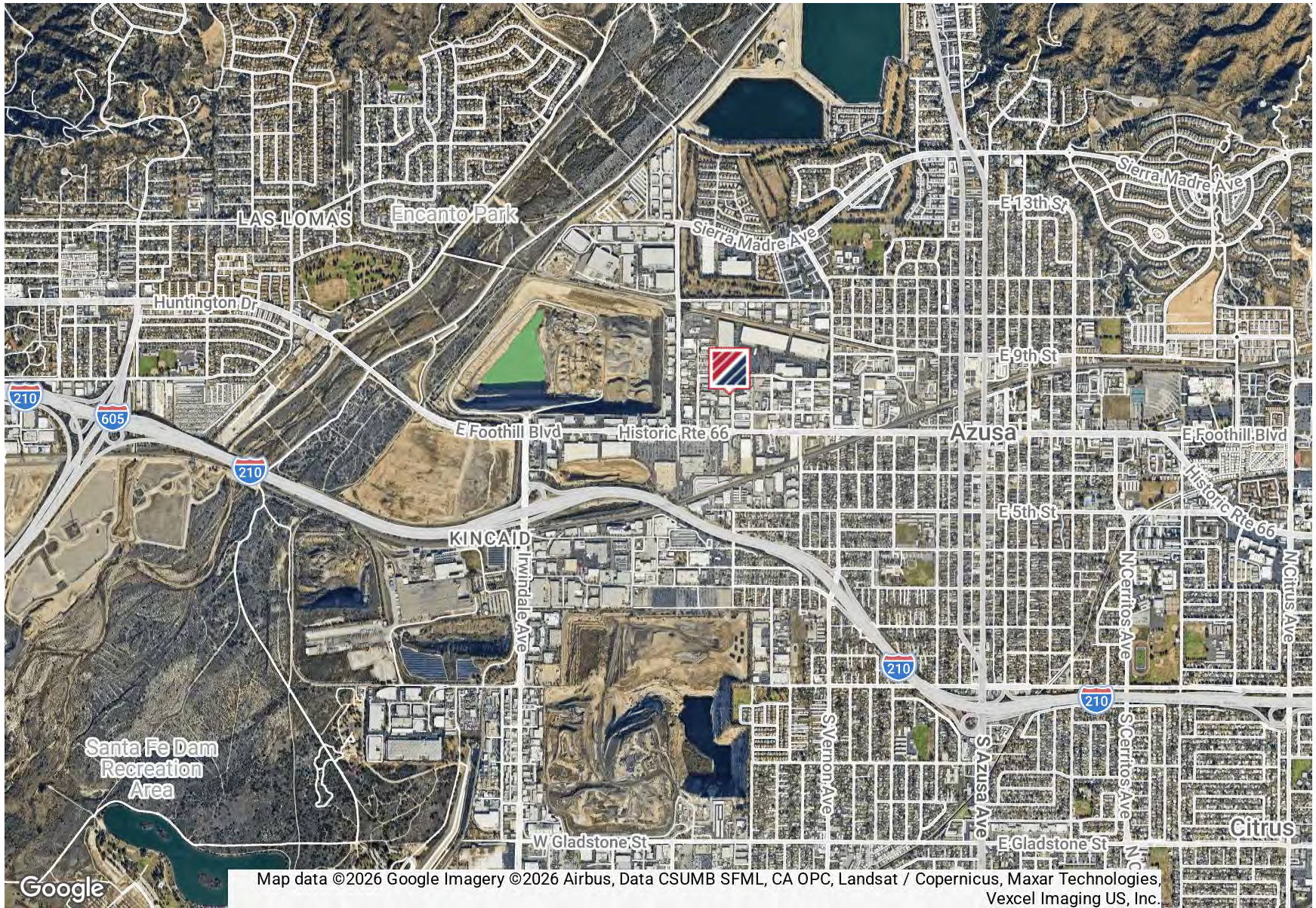
Although all information is furnished regarding for sale, rental or financing is from sources deemed reliable, such information has not been verified and no express representation is made nor is any to be implied as to the accuracy thereof, and it is submitted subject to errors, omissions, changes of price, rental or other conditions, prior sale, lease or financing, or withdrawal without notice.

**DAUM**  
COMMERCIAL REAL ESTATE SERVICES

±10,440 SF

WAREHOUSE/OFFICE

749 N CONEY AVENUE  
AZUSA | CA 91702  
**FOR LEASE**



Map data ©2026 Google Imagery ©2026 Airbus, Data CSUMB SFML, CA OPC, Landsat / Copernicus, Maxar Technologies, Vexcel Imaging US, Inc.

FOR MORE INFORMATION PLEASE CONTACT:

**LUI SALAZAR**  
ASSOCIATE VICE PRESIDENT

P: 213.270.2229 | M: 626.818.0444  
lsalazar@daumcommercial.com  
CADRE #02118236

**ALONDRA SALAZAR**  
ASSOCIATE

P: 213.270.2226  
asalazar@daumcommercial.com  
CADRE #02222628

Although all information is furnished regarding for sale, rental or financing is from sources deemed reliable, such information has not been verified and no express representation is made nor is any to be implied as to the accuracy thereof, and it is submitted subject to errors, omissions, changes of price, rental or other conditions, prior sale, lease or financing, or withdrawal without notice.

