

W WASHINGTON P O I N T E

535 E DIEHL ROAD | NAPERVILLE, IL



**Class A Office Space
Available for Lease**

NAIHiffman

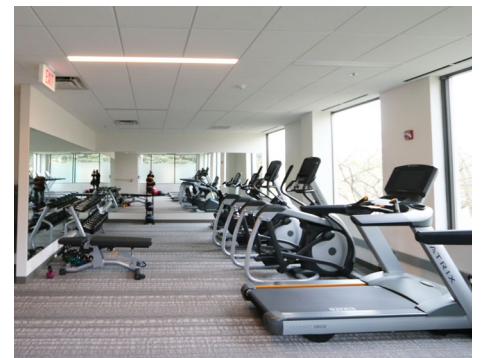
HIFFMAN
NATIONAL

WASHINGTON POINTE

535 E DIEHL ROAD
Naperville, IL

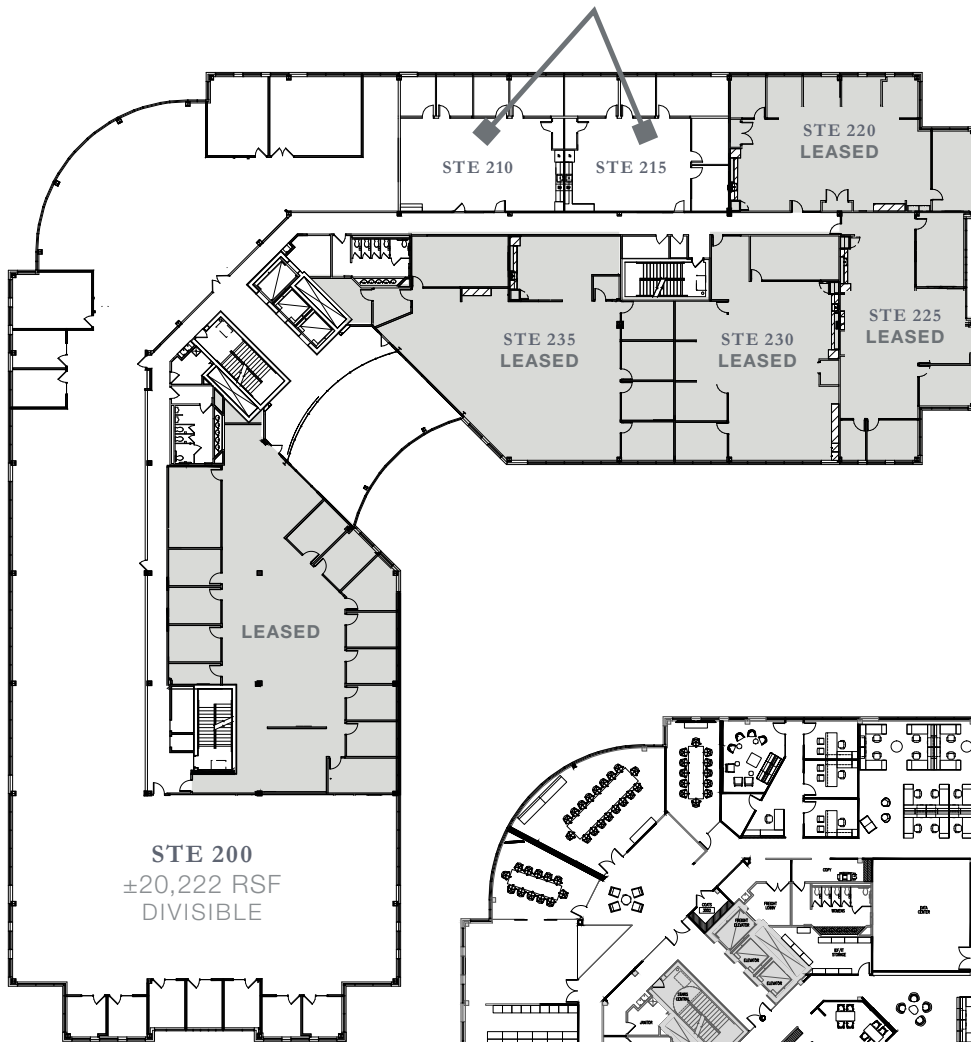


- High quality, Class A office space featuring high ceilings & expansive window-lines
- Refreshed lobby features a 2-story atrium with an abundance of natural light
- New tenant lounge & full-service fitness center
- Above market parking ratio of 5/1000 SF
- On-site engineer & management staff
- Nearby amenities include Premium Outlet Mall, proximity to downtown Naperville and upscale dining, business services, hotels and shopping
- Low DuPage County taxes



Class A Office Space Available

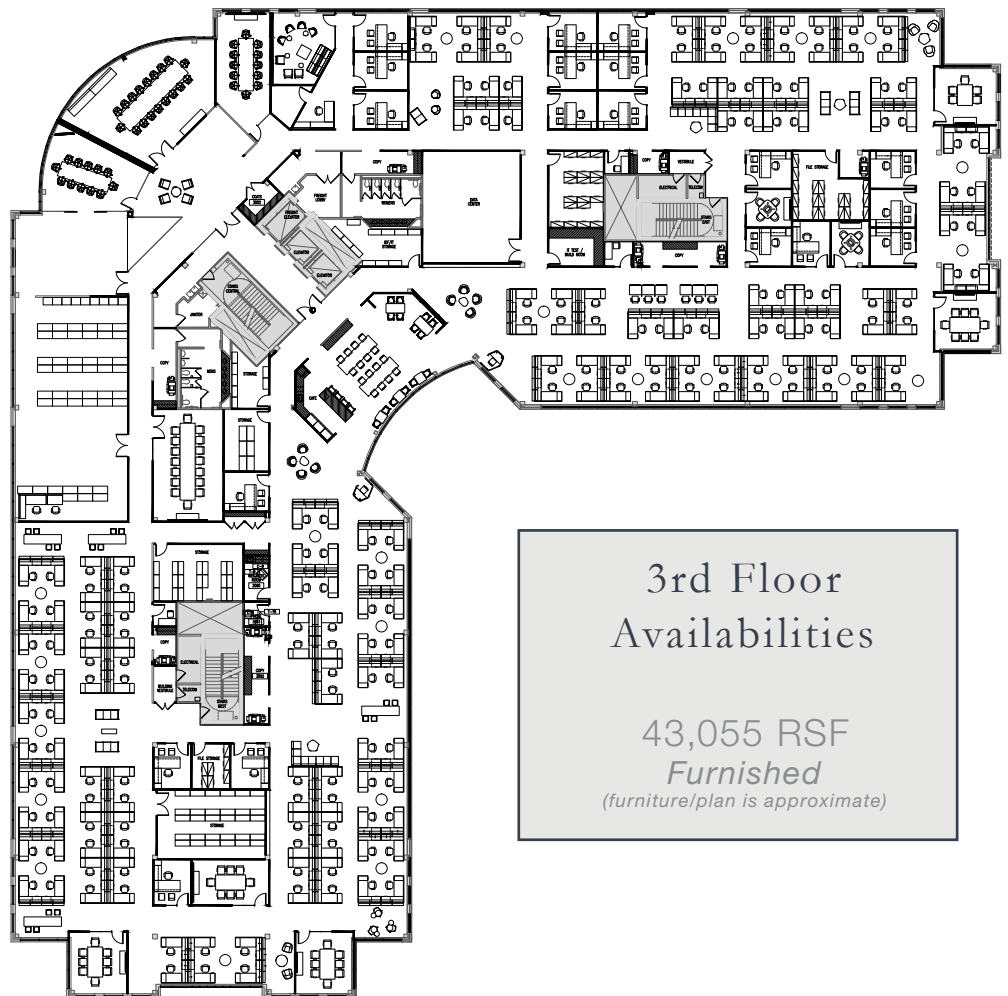
SUITES 210 & 215
1,920 RSF EACH
FURNISHED SPEC SUITES



2nd Floor
Availabilities

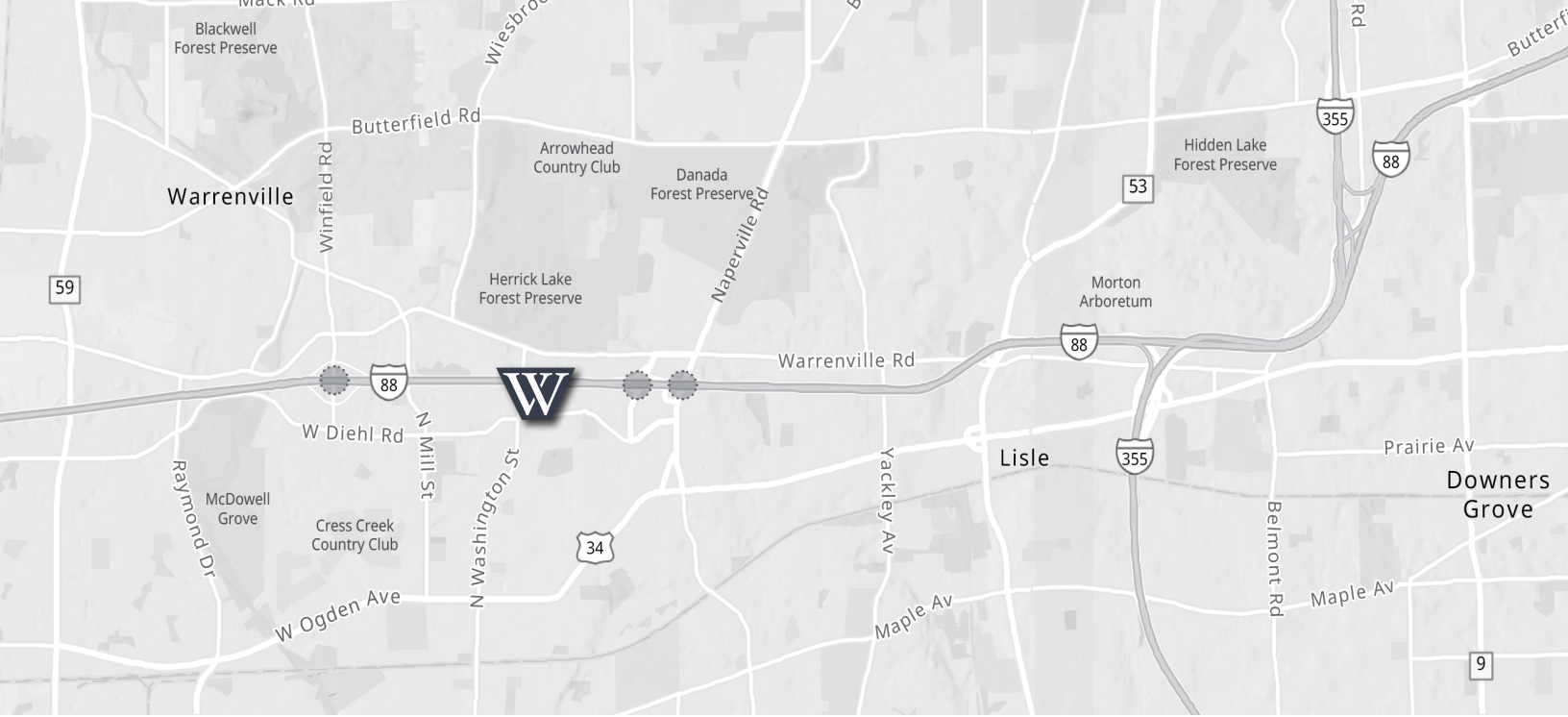
Two - 1,920 RSF
Furnished Spec Suites

±20,222 RSF
Divisible



3rd Floor
Availabilities

43,055 RSF
Furnished
(furniture/plan is approximate)



Class A Office
Space Available

W WASHINGTON
P O I N T E

535 E DIEHL ROAD
NAPERVILLE, IL



CONTACT

JIM ADLER

630 691 0605

jadler@hiffman.com

NAIHiffman

HIFFMAN
NATIONAL

One Oakbrook Terrace
Suite 400
Oakbrook Terrace, Illinois 60181
+1 630 932 1234

NO WARRANTY OR REPRESENTATION, EXPRESS OR IMPLIED, IS MADE AS TO THE ACCURACY OF THE INFORMATION CONTAINED HEREIN, AND THE SAME IS SUBMITTED SUBJECT TO ERRORS, OMISSIONS, CHANGE OF PRICE, RENTAL OR OTHER CONDITIONS, PRIOR SALE, LEASE OR FINANCING, OR WITHDRAWAL WITHOUT NOTICE, AND OF ANY SPECIAL LISTING CONDITIONS IMPOSED BY OUR PRINCIPALS NO WARRANTIES OR REPRESENTATIONS ARE MADE AS TO THE CONDITION OF THE PROPERTY OR ANY HAZARDS CONTAINED THEREIN ARE ANY TO BE IMPLIED.

hiffman.com