



FARM STREET

MAYFAIR

5,312 SQ FT FULLY FITTED OFFICES AVAILABLE

No.4

FULLY FITTED OFFICE SPACE AT THE HEART OF MAYFAIR.



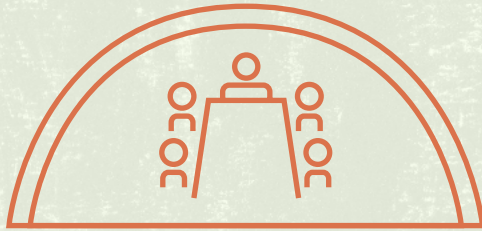
Fully fitted suites



Secured gated entrance



Self contained offices



Communal meeting and breakout spaces

4 Farm Street offers self contained offices from 367 to 5,312 sq ft to let over three floors (ground, first and second) – available as as a whole, part or individually arranged across north or south wings.

At ground floor level there is a contemporary reception, as well as communal meeting rooms, whilst at lower ground floor level end of trip facilities and further meeting/breakout space are available as well as a tea point.

- Images
- 01. Ground floor meeting room
 - 02. First floor office
 - 03. Second floor office
 - 04. First floor kitchenette / breakout space

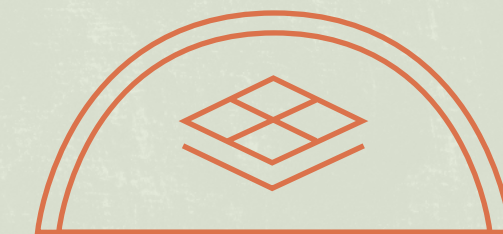
CONSIDERED & CONTEMPORARY SPACES – READY FOR WORK.



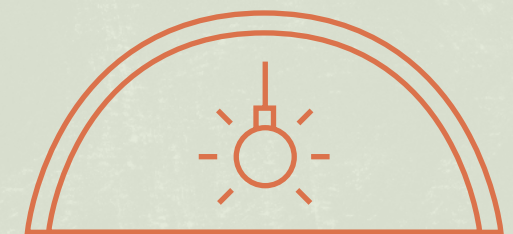
SPECIFICATION



End of trip facilities



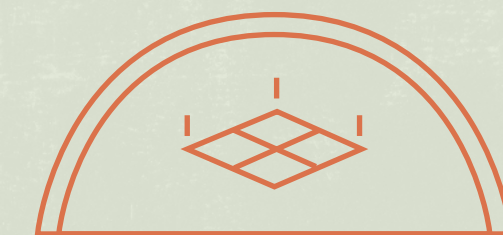
Raised floors



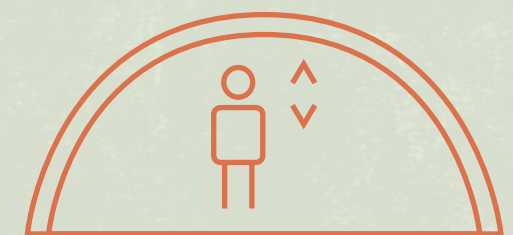
LED lighting



Air conditioning



Metal tiled suspended ceilings



1 x passenger lift

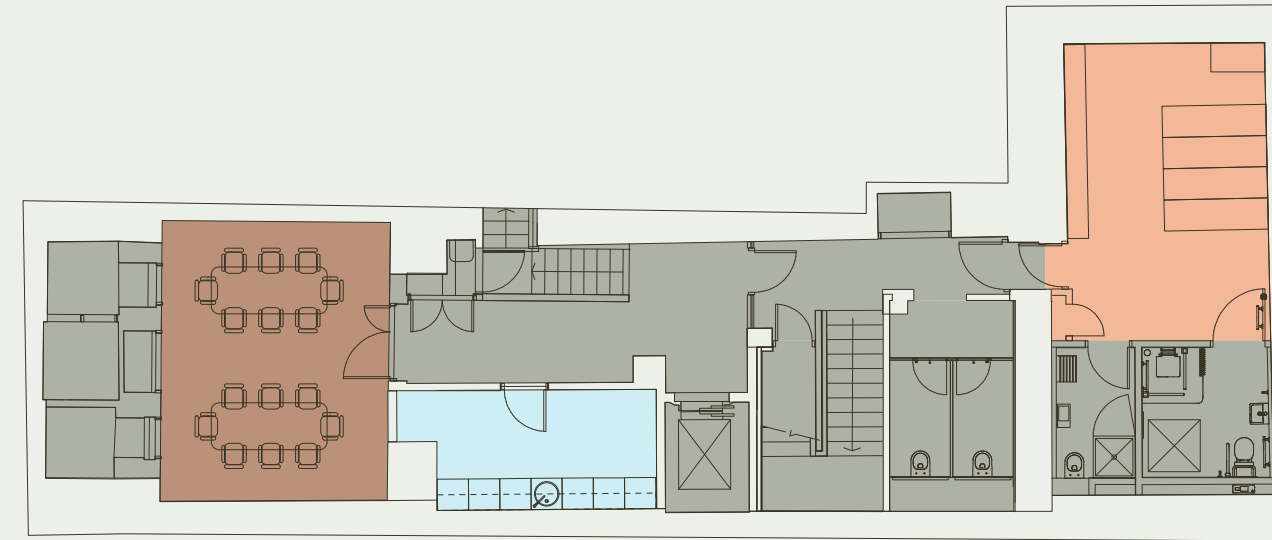
ACCOMMODATION & SPACE PLANS.

Floor		Sq Ft	Sq M
2	North	919	85.4
	South	655	60.9
1	North	911	84.6
	South	623	57.9
G		1,837	170.7
LG		367	34.1
Total		5,312	493.5

- Office (North)
- Office (South)
- Communal
- Reception
- Courtyard
- Tea point
- Bicycle racks
- Core

LOWER GROUND

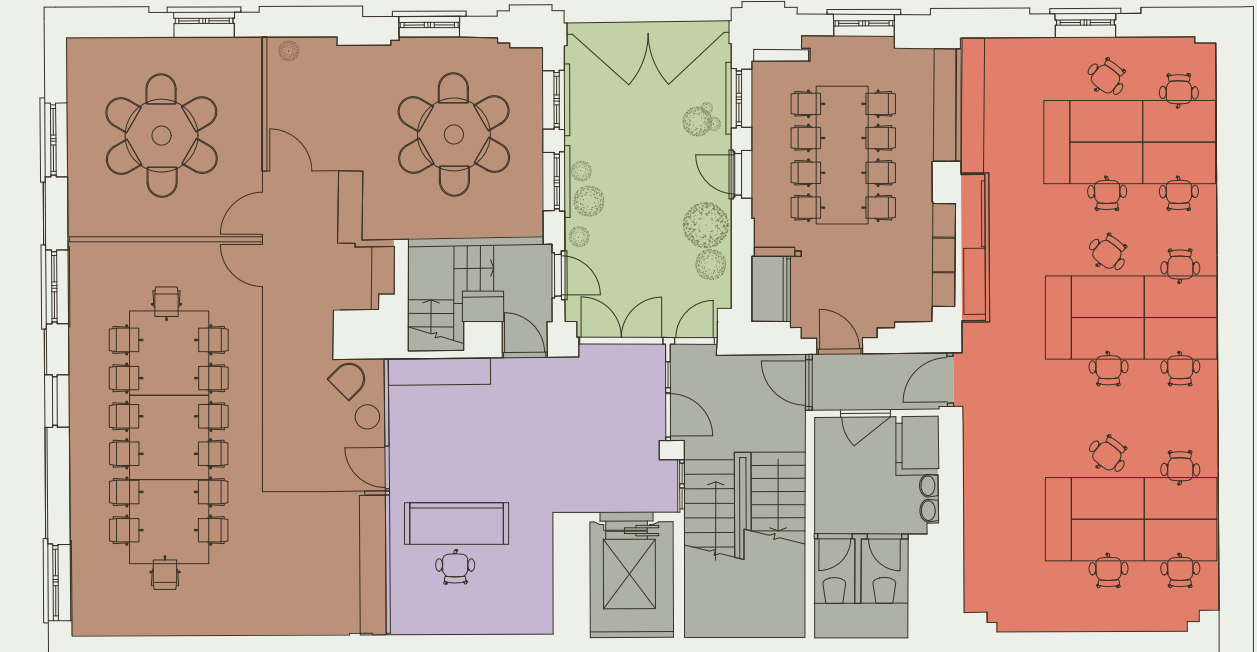
367 SQ FT / 34.1 SQ M



Breakout areas	02	Bicycle racks	04
Kitchenette	01	Shower	01

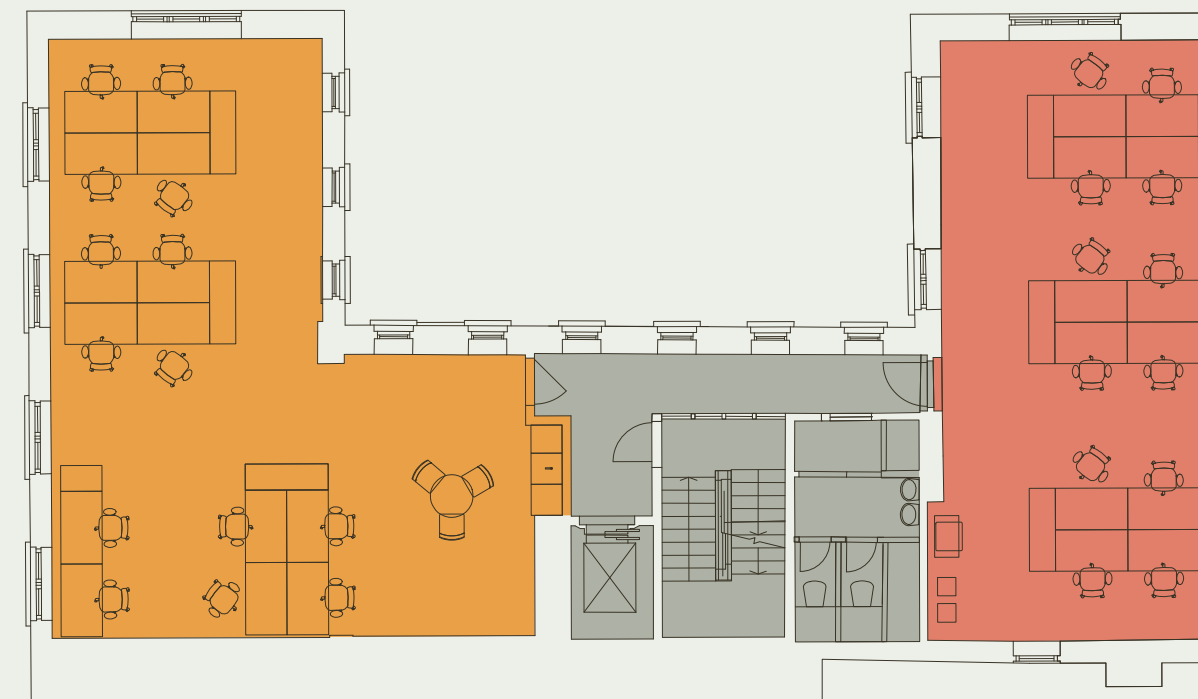
GROUND

1,837 SQ FT / 170.7 SQ M



Workstations	12	6 person meeting rooms	02
14 person boardroom	01	8 person meeting room	01

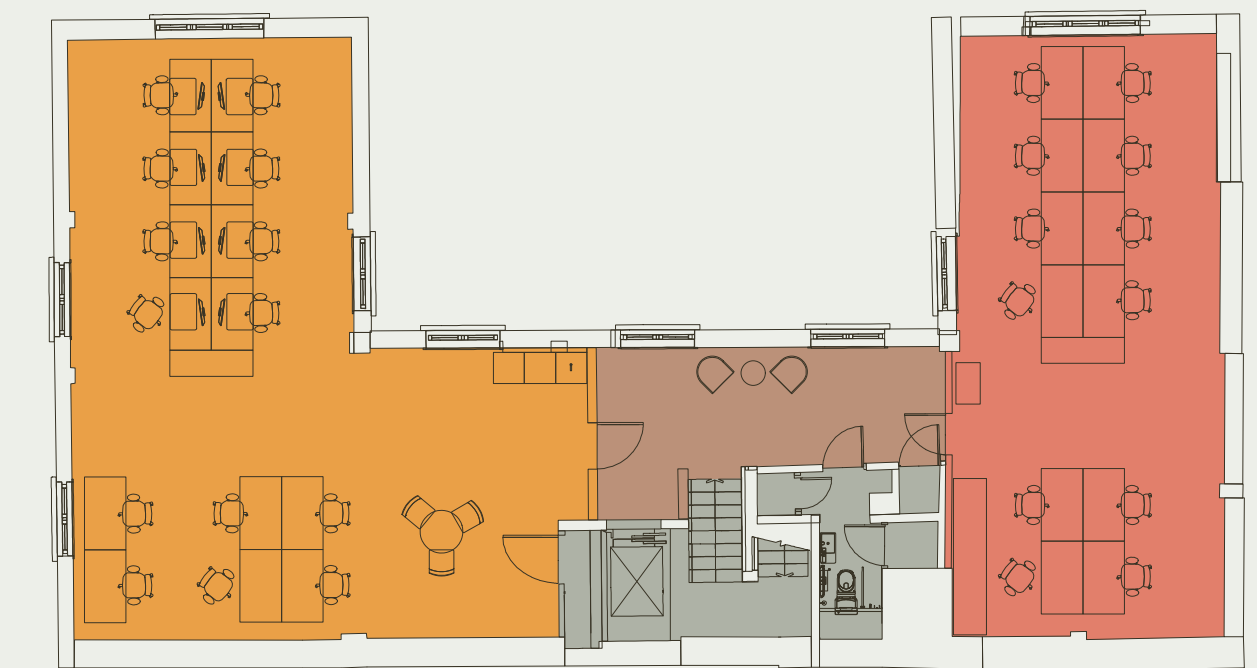
FIRST



North 911 Sq Ft / 84.6 Sq M South 623 Sq Ft / 57.9 Sq M

Workstations	14	Workstations	12
Teapoint	01		

SECOND



North 919 Sq Ft / 85.4 Sq M South 655 Sq Ft / 60.9 Sq M

Workstations	14	Workstations	12
Teapoint	01		



Images

- 01. Marchesi
- 02. Berkeley Square
- 03. Scott's
- 04. The Connaught Hotel
- 05. Nipotina

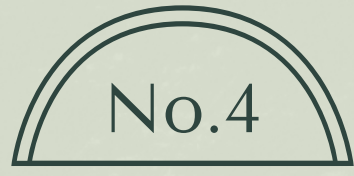
A REFINED
AND UNRIVALLED
MAYFAIR
LOCATION.



Located on the corner of Farm Street and Hill Street, close to Berkeley Square – the building is surrounded by an eclectic amenity mix, right outside the front door.

Morning, noon and night, Mayfair is home to some of the City's most celebrated destination restaurants and bars, as well as high-end boutique shops, art galleries and cultural amenities.

Berkeley Square provides a tranquil oasis in which to take five and recharge, with Green Park and Hyde Park also nearby.

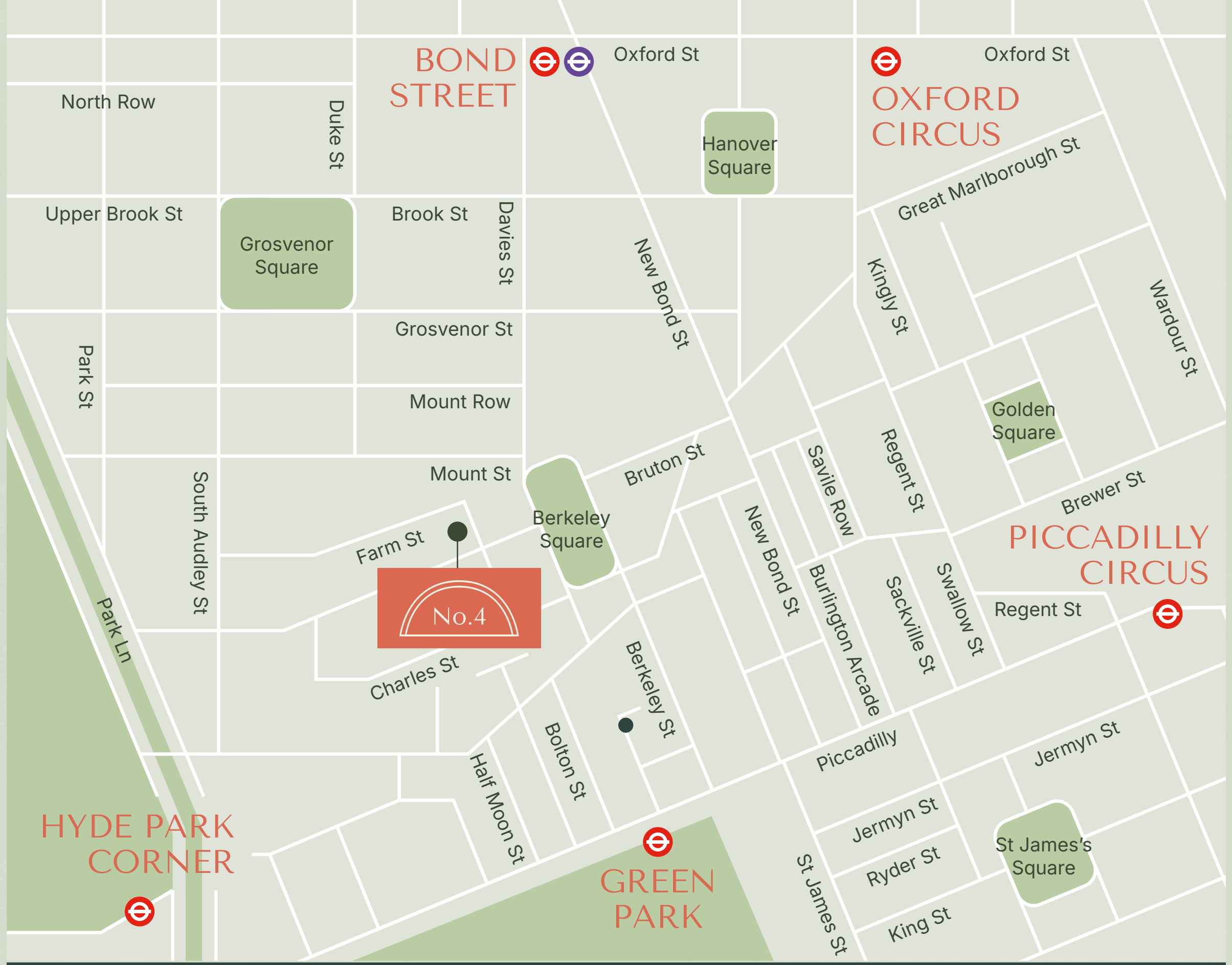


Images
 01. Hanover Square – Elizabeth line
 02. Green Park

MAYFAIR – THE PERFECT PLACE TO BE...

4 Farm Street’s location provides occupiers with easy access to London’s transport network, with the nearest underground stations at Green Park just a six minute walk away.

Bond Street is also nearby and provides access to the Elizabeth line, reducing travel times across the City.



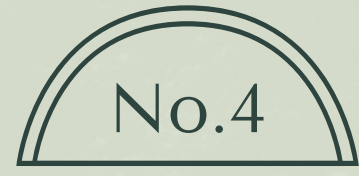
RESTAURANTS	BARS / CAFES	GYMS / LEISURE
01. Sexy Fish	07. Corrigan’s Mayfair	13. SHOT
02. HIDE	08. Gymkhana	14. Noxy Brothers
03. Sabor	09. Bacchanalia	15. LALĪ
04. Delfino	10. Mount Street Restaurant	16. NKora Coffee
05. Hakkasan	11. Koyn	17. The Punch Bowl
06. Cecconi’s Mayfair	12. Annabel’s	18. Mr Fogg Residence
		19. Third Space
		20. BuddhaBox
		21. E by Equinox
		22. The Connaught Hotel
		23. The Chancery Rosewood
		24. Claridges



CONNECTIVITY (WALK TIMES IN MINUTES)



Underground station walk times – source TfL.



FURTHER INFORMATION

TERMS

Available by way of a new sublease/s for a term to be agreed, alternatively by assignment of our client's lease expiring in July 2029.

VIEWING

For further information or to arrange a viewing, please contact the sole letting agents:



Rob Skioldebrand
07769 725 412
robertskioldebrand@brayfoxsmith.com

Misrepresentations Act 1967: Whilst all the information is believed to be correct, neither the agents nor the client guarantee its accuracy nor is it intended to form any part of any contract. All areas quoted are approximate. July 2025.

Designed & Produced by Cre8te - cre8te.london

