

Fountains Blvd Retail Center

West Chester, OH

Property Highlights

- + 6,000 SF End Cap Available for Lease
 - Asking: \$15.00/SF + NNN
 - Pylon Signage Available
- + Traffic Counts:
 - I-75: 131,667 AADT
 - Cincinnati Dayton Rd: 28,633 AADT
- + Nearby tenants include: Walmart, Goldfish Swim Academy, Kiddie Academy, Kumon, Autozone, Dunkin, Waffle House, Sonic, Wendy's and Arby's
- + Conveniently located right off of I-75, in between the retail corridors of West Chester and Liberty Township
 - Less than 4 Miles from Southwest Ohio's only Ikea and Topgolf
- + Less than 4 Miles from the Voice of America MetroPark, which spans over 435 Acres

6587-6883 Fountains Blvd
West Chester Township, OH 45069



Contact Us

Mike Seliga

Associate
+1 513 369 1394
mike.seliga@cbre.com

Lacey Kelly

Associate
+1 513 369 1640
lacey.kelly@cbre.com

Site Overview



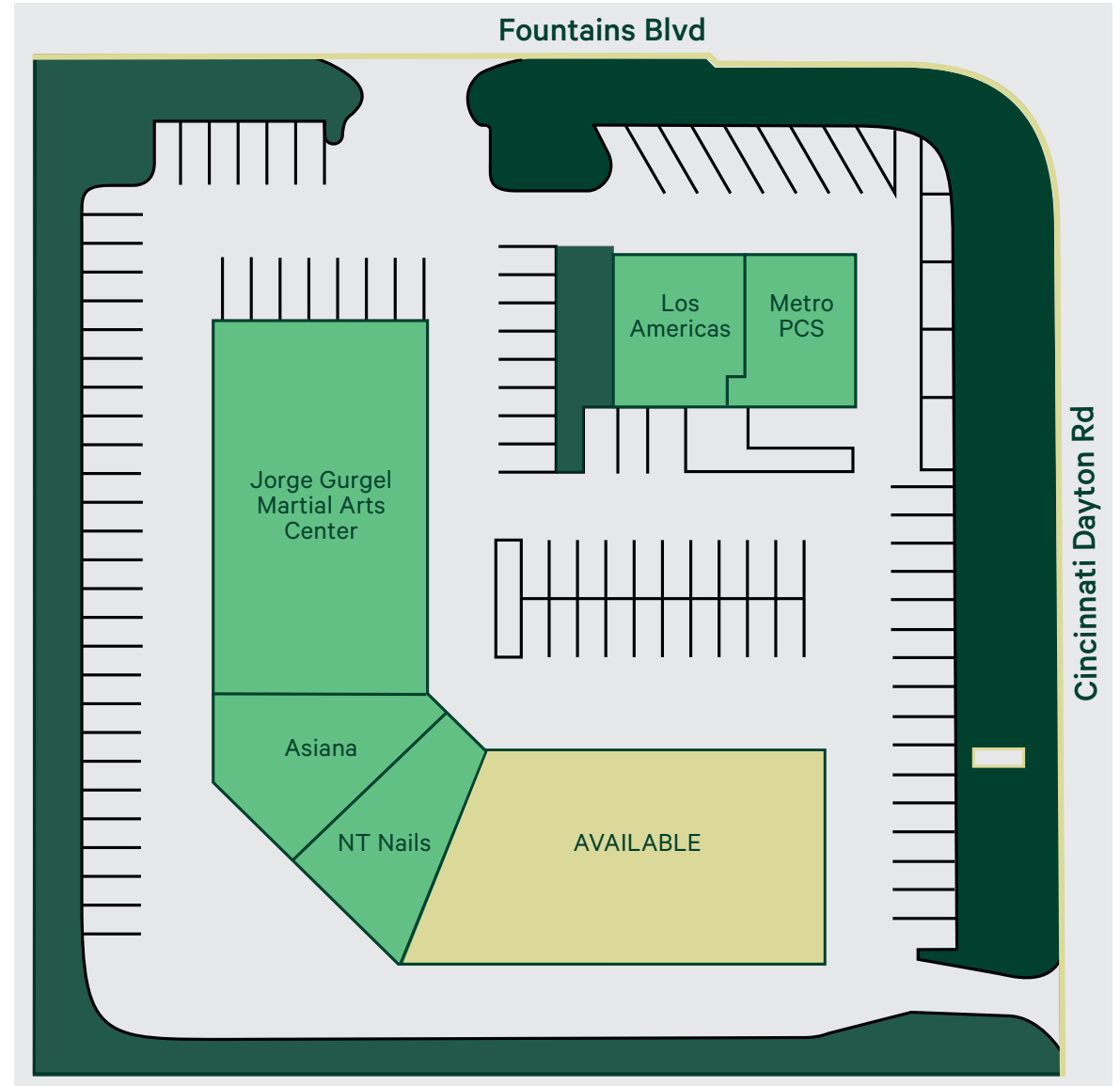
Fountains Blvd Retail Center

6587 Fountains Blvd | West Chester Township, OH 45069

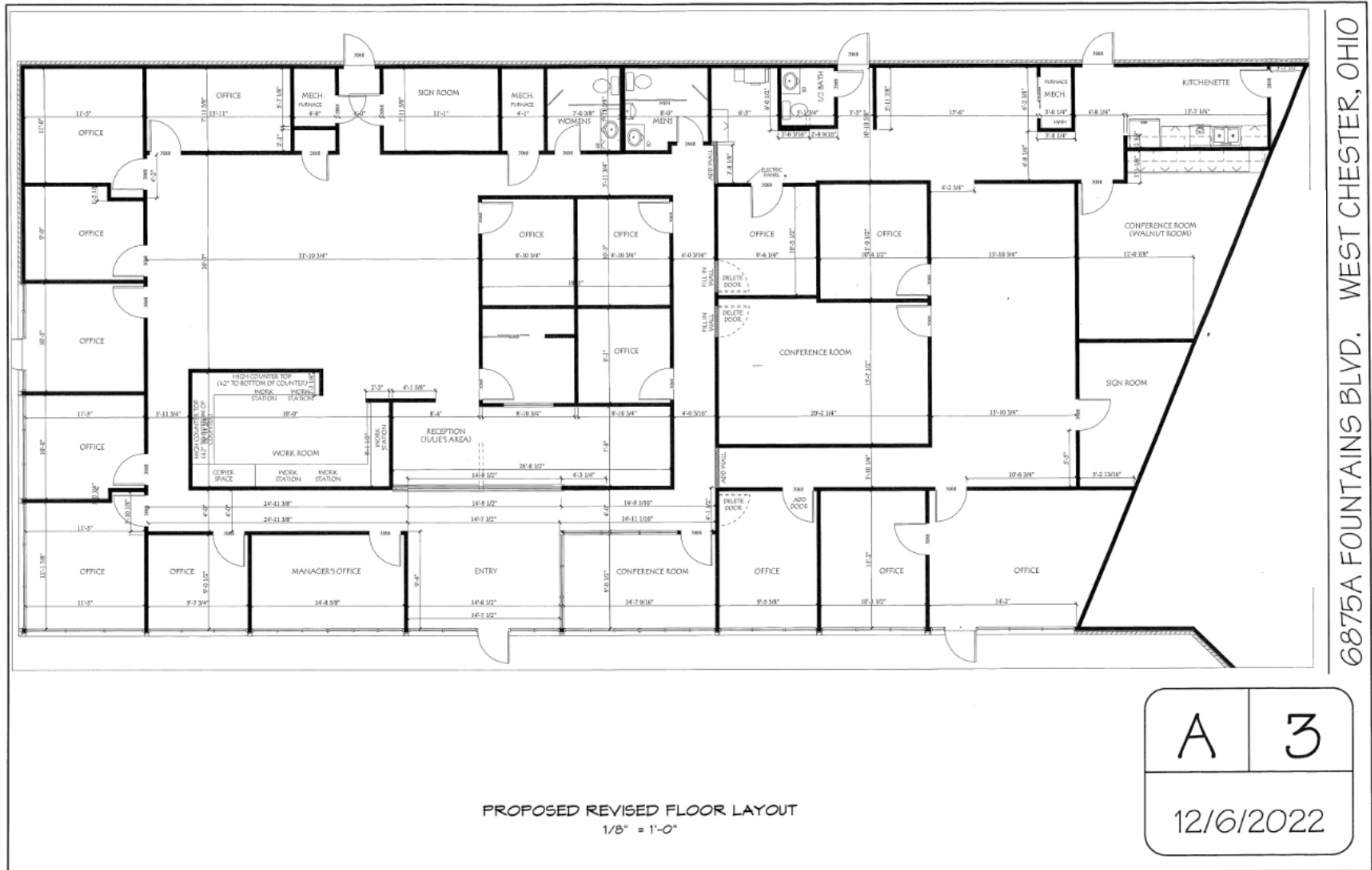
For Lease

Site Map

Space #	Tenant	SF
6883B	Los Americas	1,617
6883A	Metro PCS	1,408
6875K	Jorge Gurgel Martial Arts Center	4,000
6875G	Asiana	1,800
6875F	NT Nails	1,486
6875A	AVAILABLE	6,000



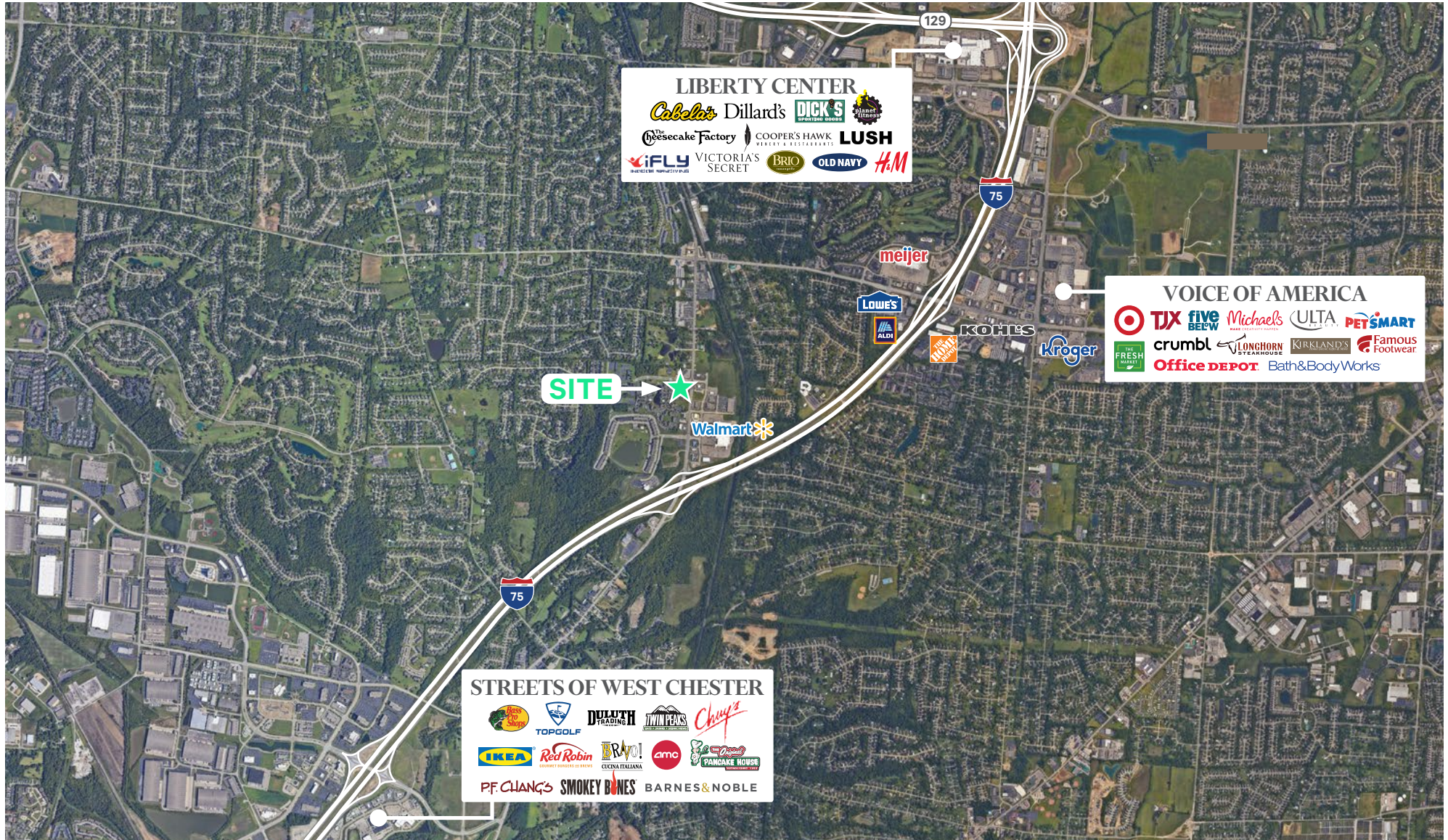
Space Floor Plan



6875A FOUNTAINS BLVD. WEST CHESTER, OHIO

A	3
12/6/2022	

Market Overview



Fountains Blvd Retail Center

6587 Fountains Blvd | West Chester Township, OH 45069

For Lease

Market Insights

2023 Demographics	1 Miles	3 Miles	5 Miles
Population	9,184	56,764	148,249
Daytime Population	7,552	62,844	166,366
Median Age	37.4	40.2	38.3
Households	3,635	21,084	53,342
Average Household Income	\$113,097	\$142,618	\$150,071

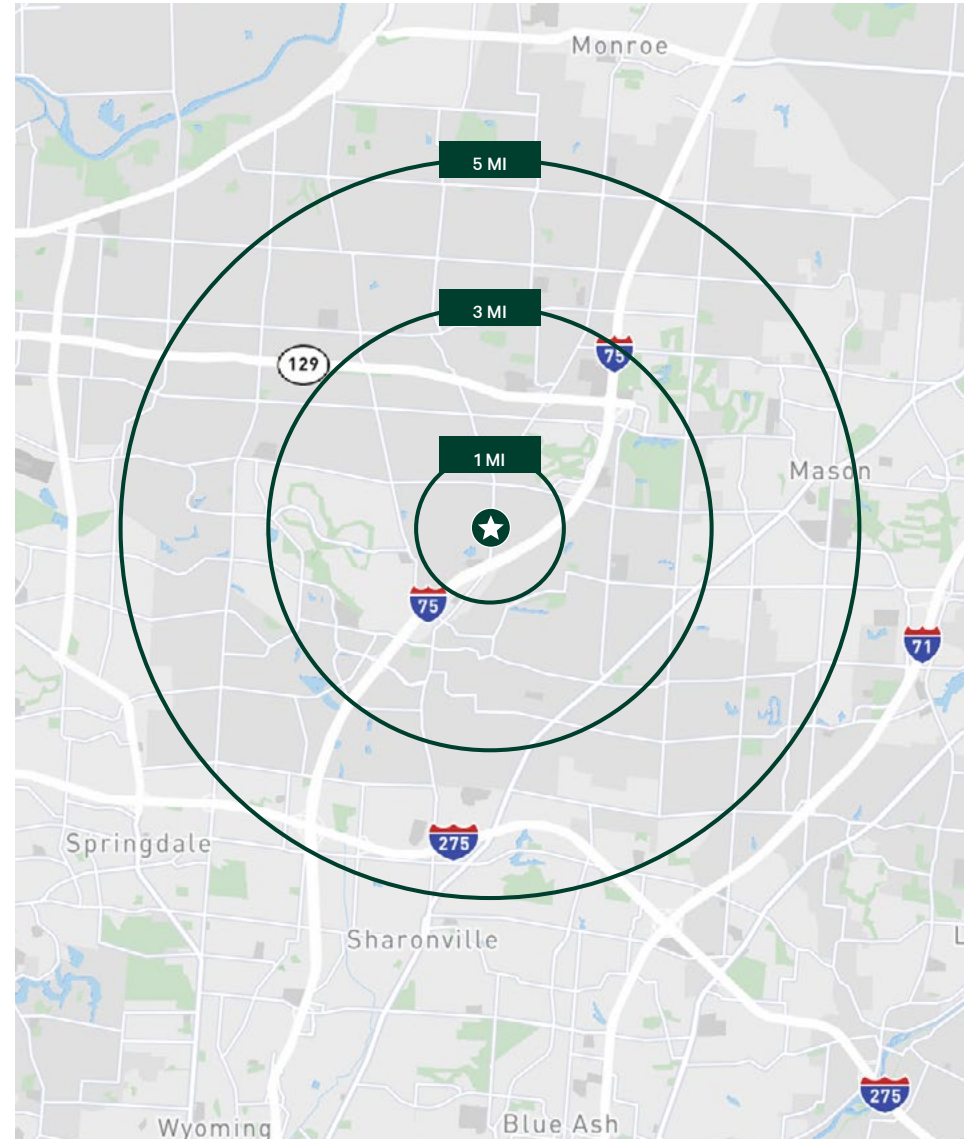
Contact Us

Mike Seliga

Associate
+1 513 369 1394
mike.seliga@cbre.com

Lacey Kelly

Associate
+1 513 369 1640
lacey.kelly@cbre.com



© 2023 CBRE, Inc. All rights reserved. This information has been obtained from sources believed reliable, but has not been verified for accuracy or completeness. You should conduct a careful, independent investigation of the property and verify all information. Any reliance on this information is solely at your own risk. CBRE and the CBRE logo are service marks of CBRE, Inc. All other marks displayed on this document are the property of their respective owners, and the use of such logos does not imply any affiliation with or endorsement of CBRE. Photos herein are the property of their respective owners. Use of these images without the express written consent of the owner is prohibited.

CBRE