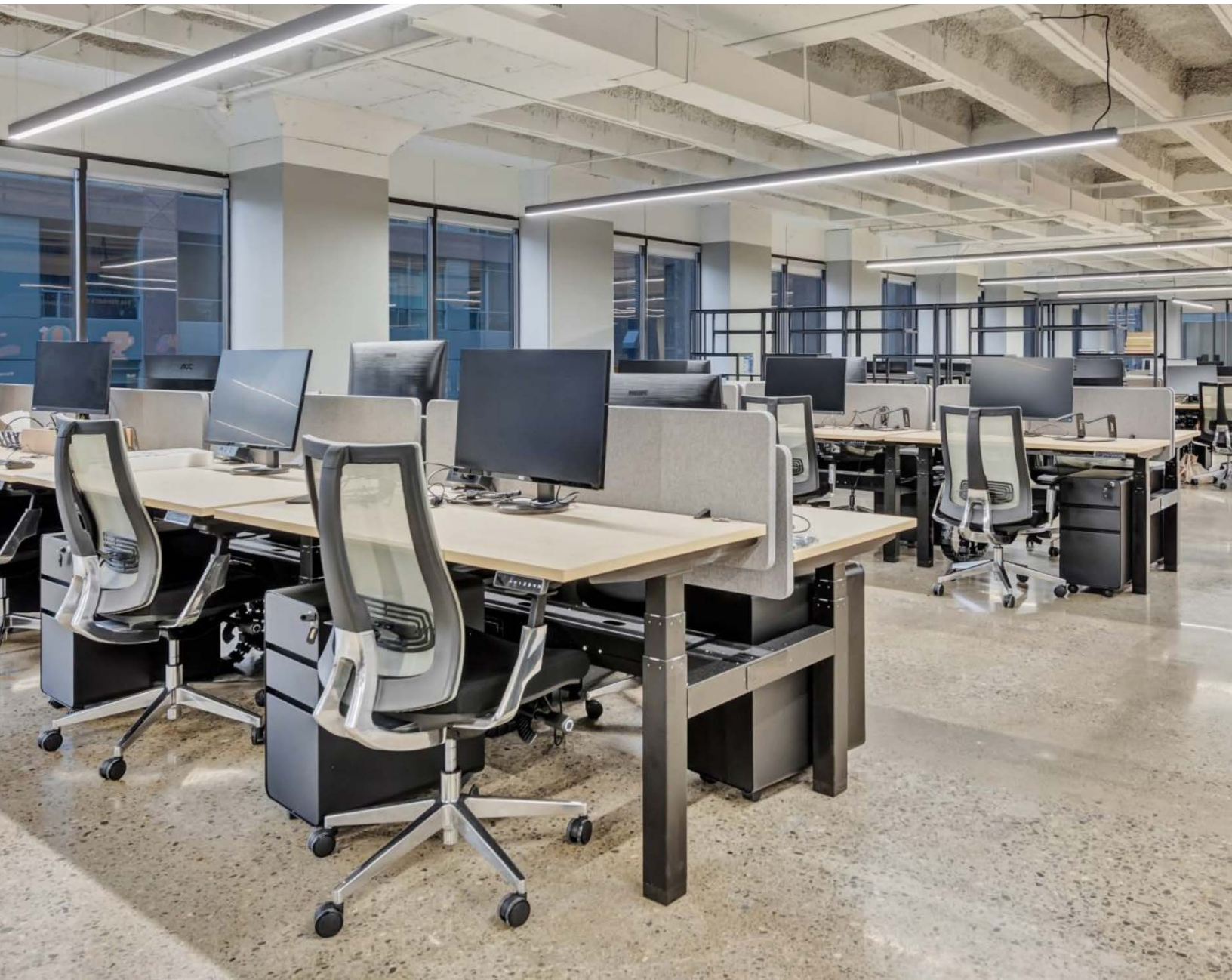


# 18 KING ST. EAST

INTRODUCING  
**THE NEW WAVE  
OF RSG SUITES**

**\$4.00/SF/YEAR BROKER FEE**

FIRST 5 YEARS ONLY. DEALS MUST BE MINIMUM 5 YEARS.  
DEALS MUST BE FIRM AND BINDING IN 2026. NEW TENANTS ONLY





**ADDITIONAL CONTIGUOUS SPACE AVAILABLE UP TO 40,000 SF**

LANDLORD	SIZE RANGE	NET RENT	ADDITIONAL RENT
KingSett Capital Managed by Salthill	From 1,623 sq. ft to 13,940 sq. ft	Call to discuss	\$7.76 taxes \$14.29 op costs \$3.73 utilities \$25.78 total (2026 est.)

# AVAILABILITIES

SUITE	302	4th Floor	600	<del>903</del> <b>LEASED</b>	1205	1600
SQ. FT	1,623 SF	4,006 SF	13,940 SF	3,145 SF	2,869 SF	8,103 SF
AVAILABLE	Now	Q1 2027	Sept 2026 Divisible	Mar 2026	June 2026	Sept 2026
RSG		<input checked="" type="checkbox"/>		<input checked="" type="checkbox"/>		

# BUILDING FEATURES

Located in Toronto's financial core, 18 King St. East boasts convenient access to amenities such as shopping, hotels, restaurants, cafes, fitness centers, and the underground PATH.



**STEPS TO  
PATH**



**SUSTAINABILITY**  
(GOLD WIRED CERTIFIED,  
BOMA BEST SILVER)



**AMENITY  
DENSE AREA**

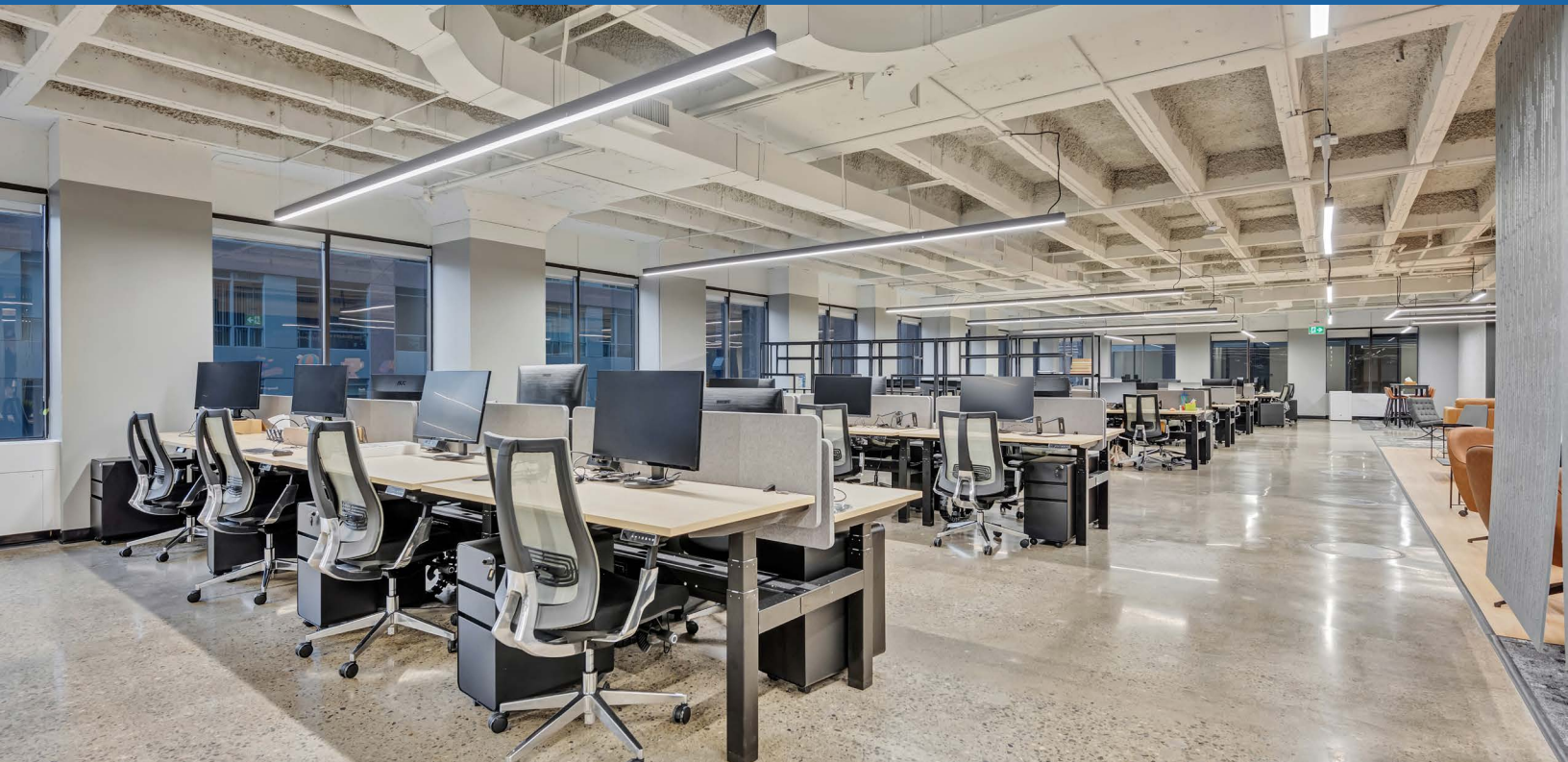


**READY SET GO**

## What does it mean?

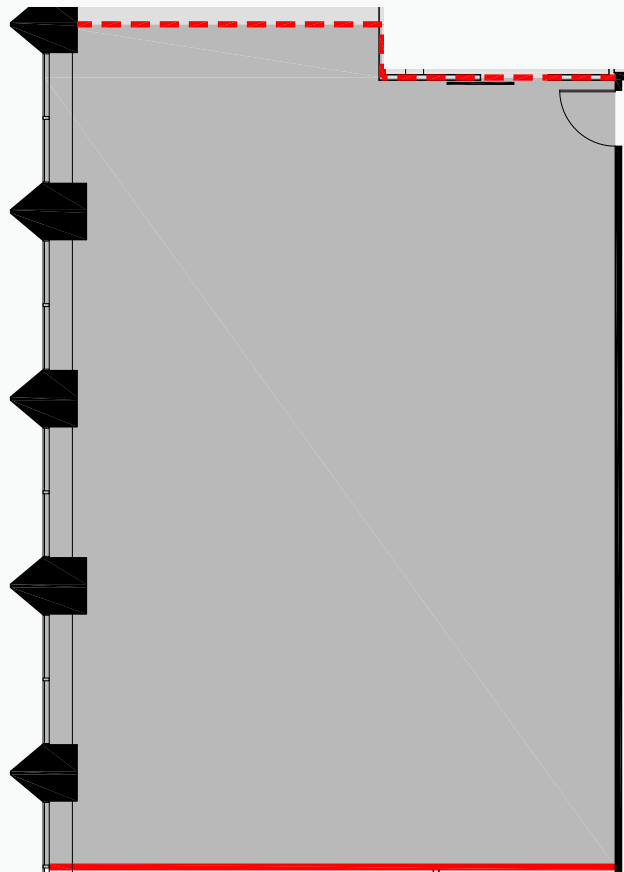
"Ready Set Go" or "RSG" means the space is ready to move into. The suite is built out, furnished, and WIFI enabled.

**Lookout for these symbols to know if a space is "RSG"!**



**SUITE 302**

1,623 SF | Available Now

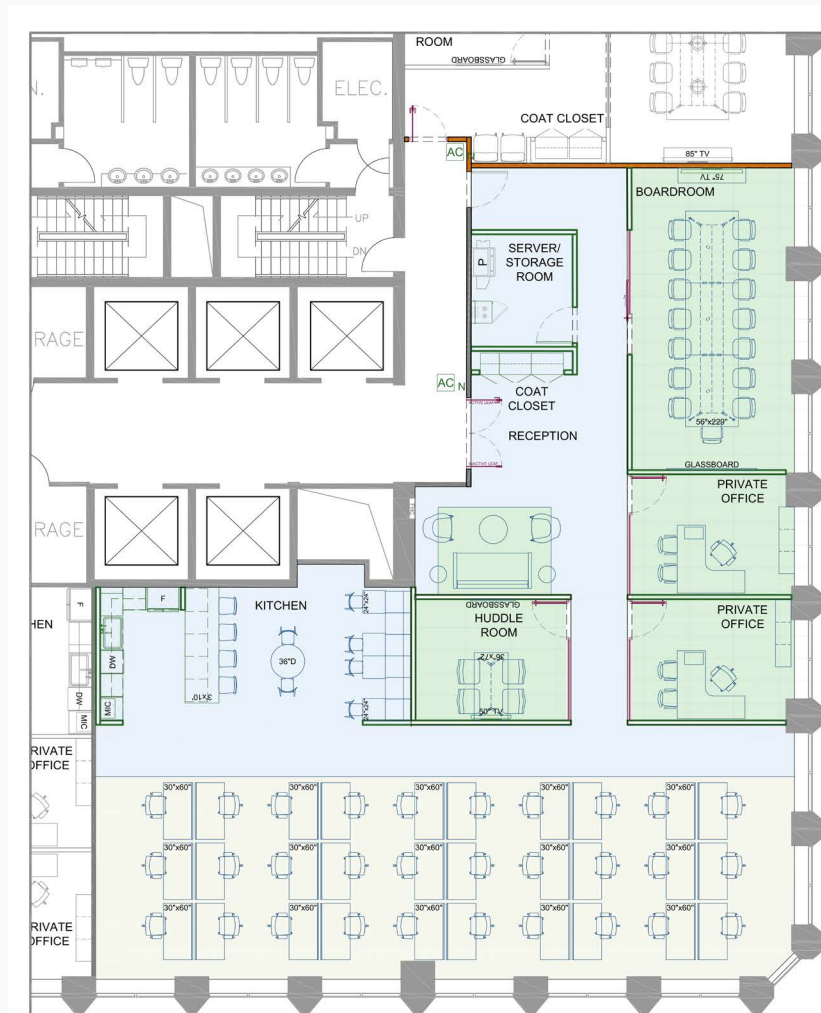


# 18 KING ST. EAST

## 4th Floor

4,006 SF | Q1 2027 | Model Suite Ready

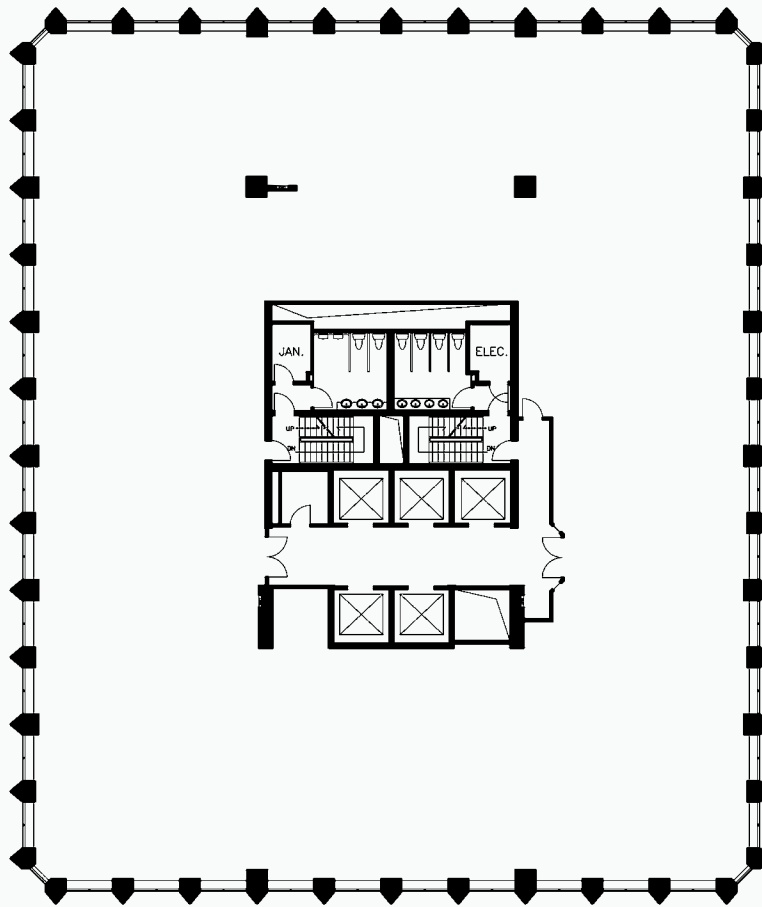
READY SET GO



# 18 KING ST. EAST

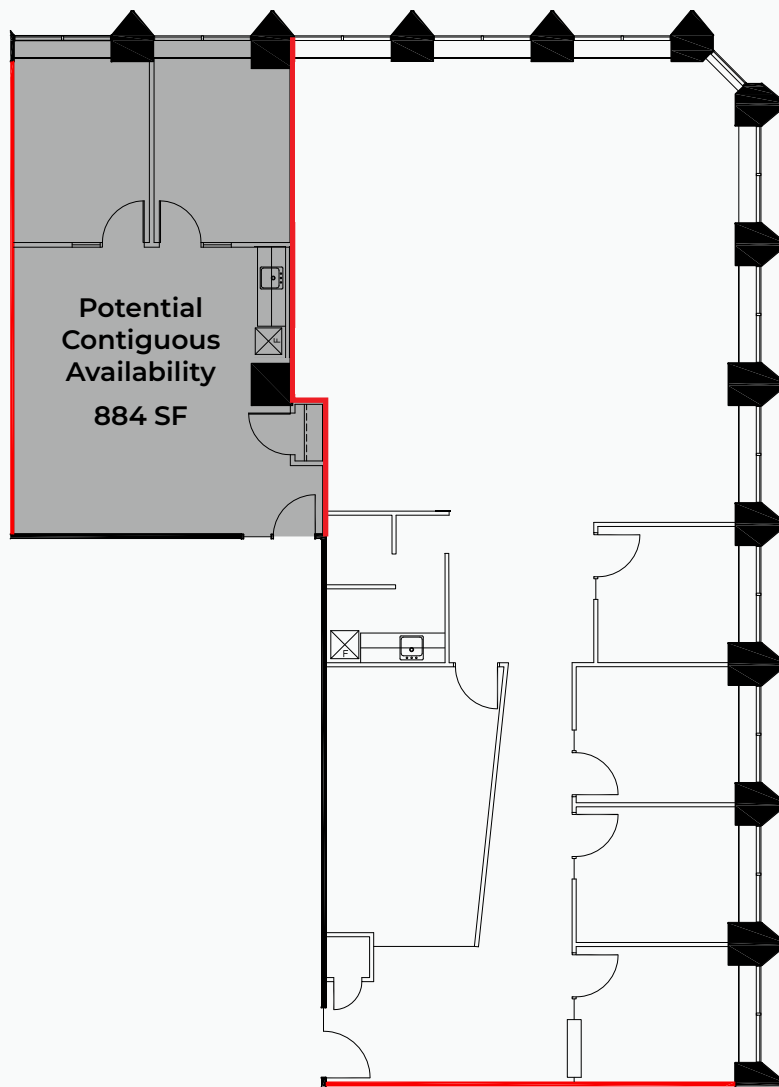
## SUITE 600

13,940 SF | September 2026



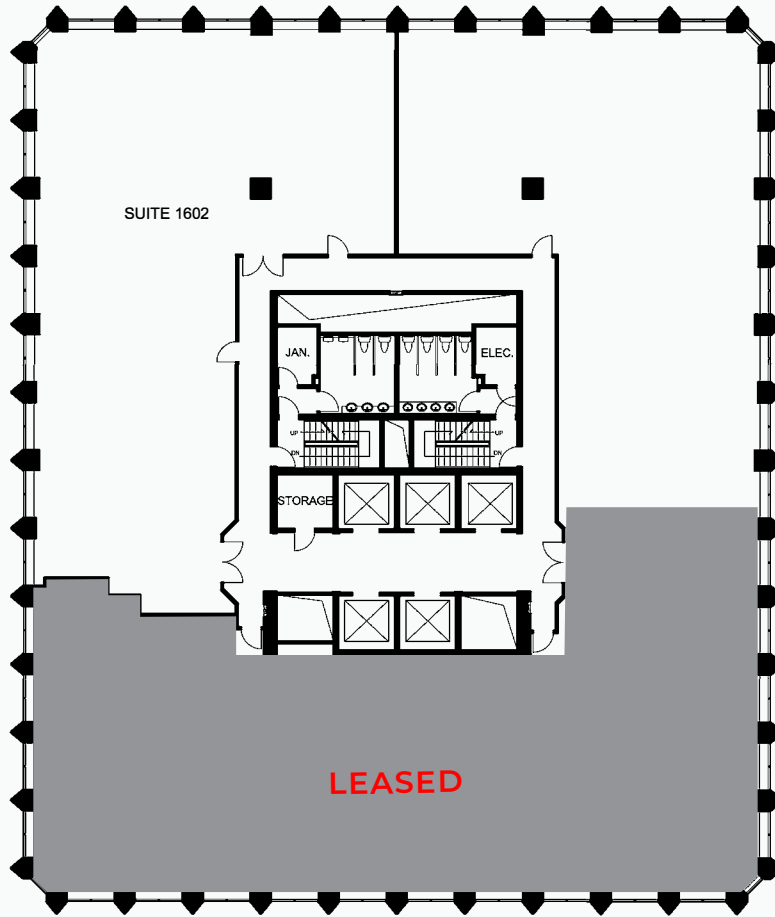
**SUITE 1205**

2,869 SF | June 2026



**SUITE 1600**

8,103 SF | September 2026

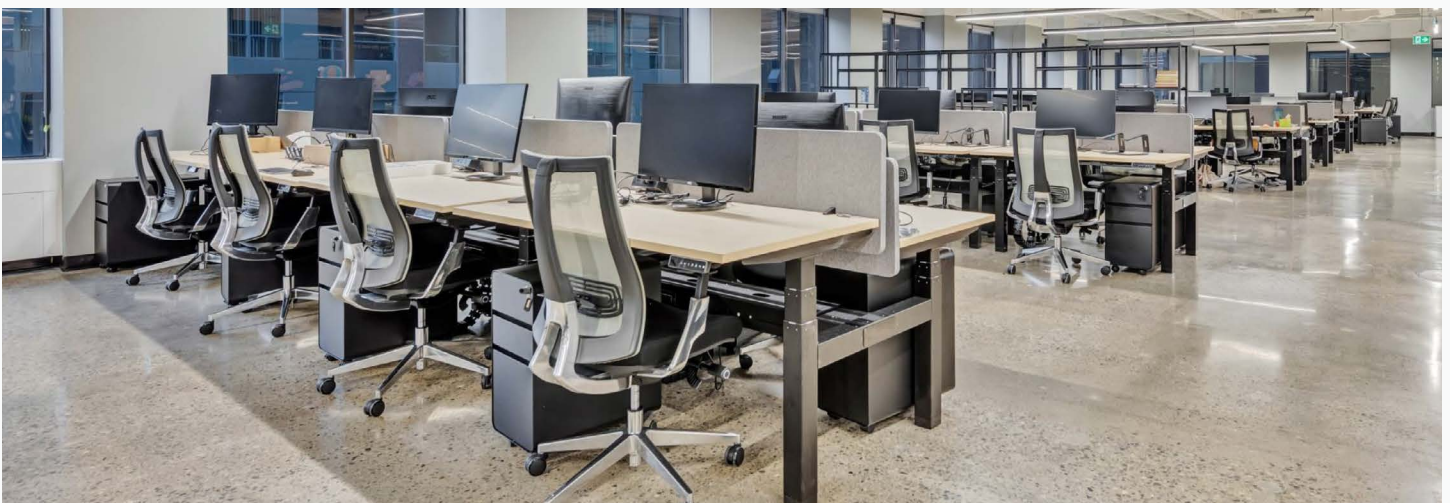




READY SET GO



# SAMPLE RSG FINISHES



Renderings of sample finishes.

# 18 KING ST. EAST



**Kirk Baylis\***  
Sales Associate  
647 923 9243  
kirk.baylis@cbre.com

**Elaine Jenkins\***  
Vice President  
647 550 2375  
elaine.jenkins@cbre.com

**Jeff Friedman\***  
Vice Chairman  
416 815 2363  
jeff.friedman@cbre.com

**CBRE Limited, Real Estate Brokerage**  
145 King Street West, Suite 1100  
Toronto, ON, M5H 1J8  
416 362 2244

\*Sales Representative

This disclaimer shall apply to CBRE Limited, Real Estate Brokerage, and to all other divisions of the Corporation; to include all employees and independent contractors ("CBRE"). The information set out herein, including, without limitation, any projections, images, opinions, assumptions and estimates obtained from third parties (the "Information") has not been verified by CBRE, and CBRE does not represent, warrant or guarantee the accuracy, correctness and completeness of the Information. CBRE does not accept or assume any responsibility or liability, direct or consequential, for the Information or the recipient's reliance upon the Information. The recipient of the Information should take such steps as the recipient may deem necessary to verify the Information prior to placing any reliance upon the Information. The Information may change and any property described in the Information may be withdrawn from the market at any time without notice or obligation to the recipient from CBRE. CBRE and the CBRE logo are the service marks of CBRE Limited and/or its affiliated or related companies in other countries. All other marks displayed on this document are the property of their respective owners. All Rights Reserved.