

# LIGHT INDUSTRIAL FOR LEASE

720 Northrup Street | San Jose, CA.  
±1,525 Square Feet

## HIGHLIGHTS:

- One Office, Restroom, Balance Warehouse
- Bonus Mezzanine Office
- 10'x10' Grade Level Truck Door
- 15' Clear Height
- Skylights
- Separately Metered
- Highway 280 Immediate Proximity and Access
- \$1.75/SF, Industrial Gross (\$0.07/SF CAM)

The information contained herein has been obtained from sources we deem reliable. We cannot, however assume responsibility for its accuracy.

Please Contact Exclusive Agent:

**BRIAN COSTELLO**, Senior Vice President  
[bcostello@ritchiecommercial.com](mailto:bcostello@ritchiecommercial.com)  
1 (408) 316.7447 DRE Lic. #01914680

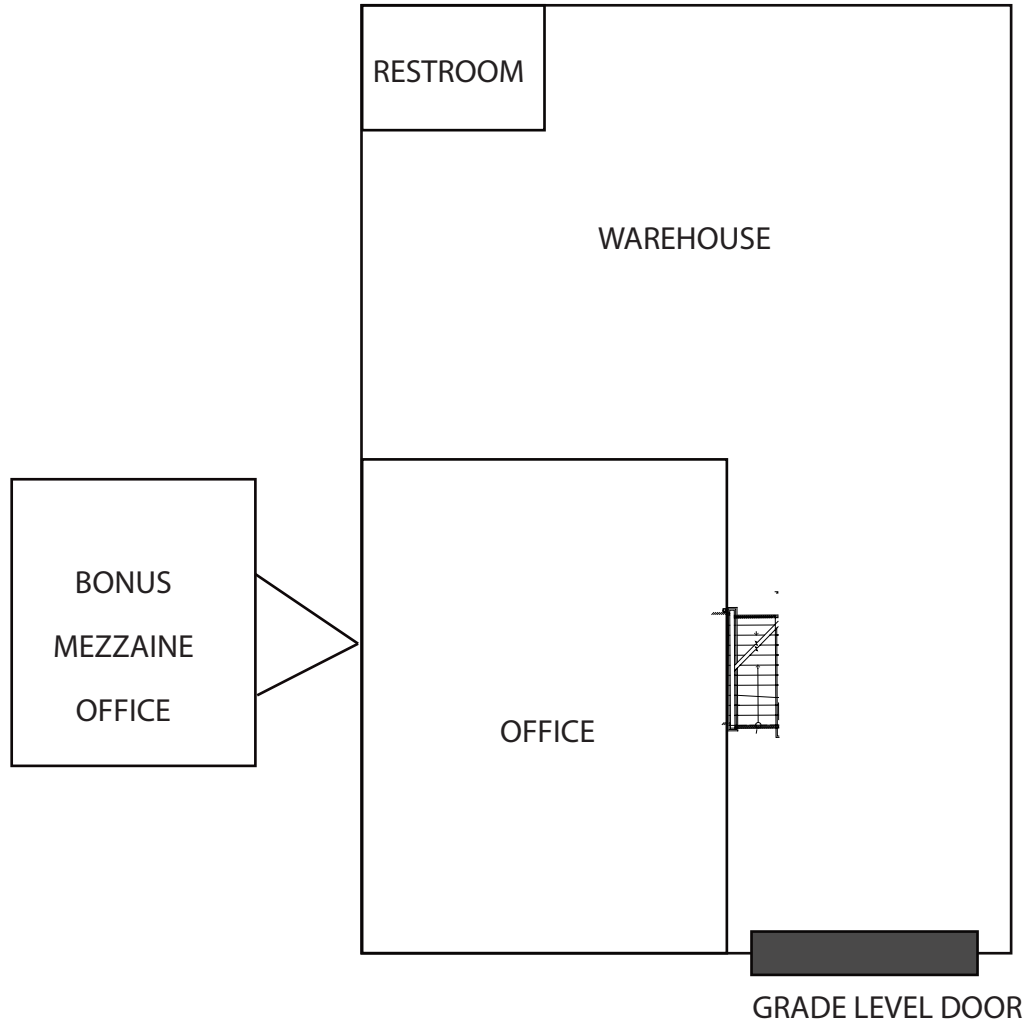
34 WEST SANTA CLARA STREET, SANJOSE, CA. 95113  
408.971.2700 fax: 408.971.1600  
DRE #01209214 | [www.ritchiecommercial.com](http://www.ritchiecommercial.com)

*San Francisco | San Jose | Santa Cruz*



# LIGHT INDUSTRIAL FOR LEASE

720 Northrup Street | San Jose, CA.  
±1,525 Square Feet



**RITCHIE** Commercial  
RESPONSIBLE REAL ESTATE

FLOORPLAN NOT TO SCALE

34 WEST SANTA CLARA STREET, SANJOSE, CA. 95113  
408.971.2700 fax: 408.971.1600  
DRE #01209214 | [www.ritchiecommercial.com](http://www.ritchiecommercial.com)

Please Contact Exclusive Agent:  
**BRIAN COSTELLO**, Senior Vice President  
[bcostello@ritchiecommercial.com](mailto:bcostello@ritchiecommercial.com)  
1 (408) 316.7447 DRE Lic. #01914680