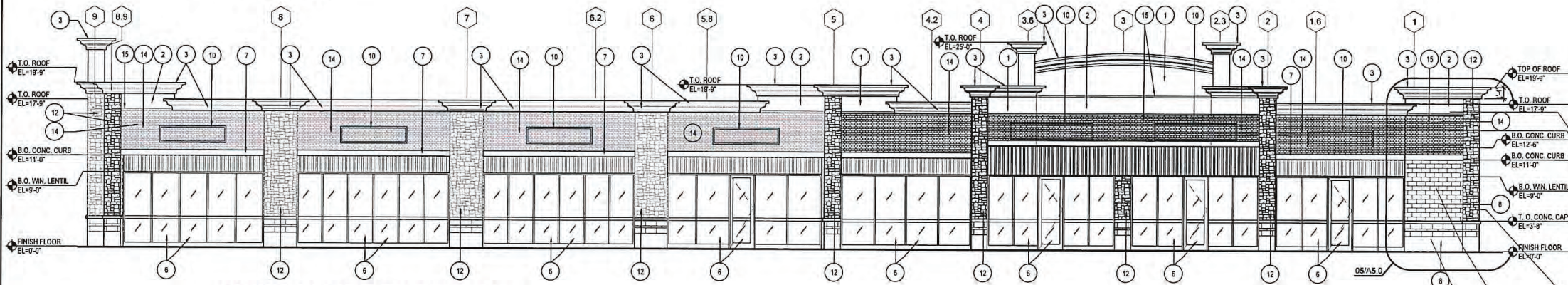
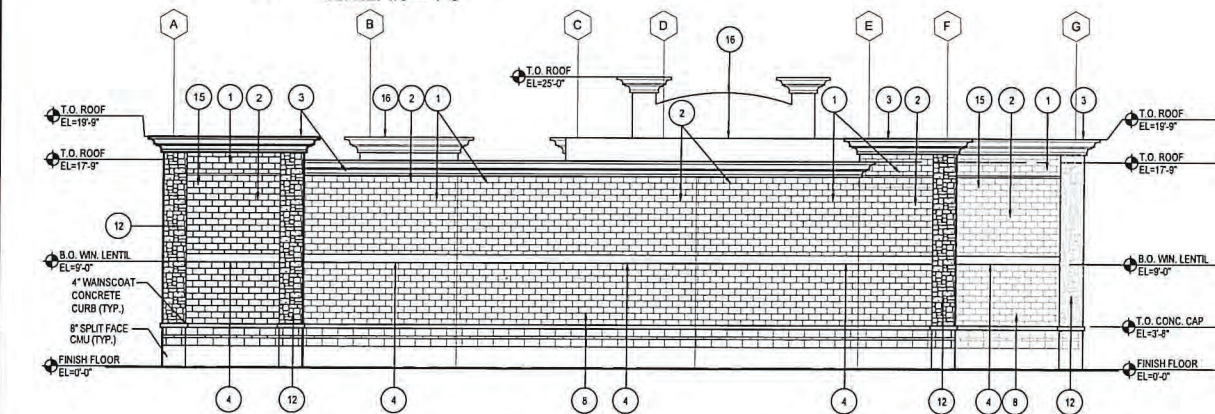


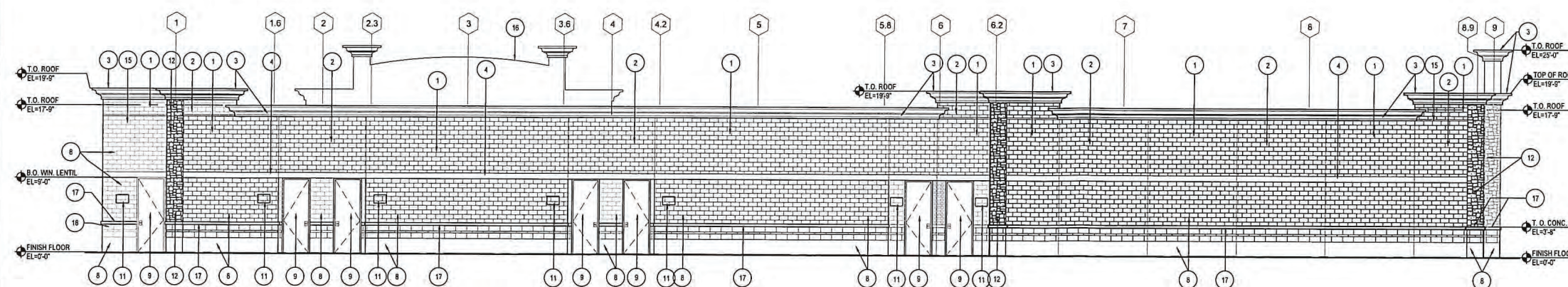
**01 EAST / FRONT ELEVATION**  
SCALE: 1/8" = 1'-0"



**02 NORTH / SIDE ELEVATION**  
SCALE: 1/8" = 1'-0"

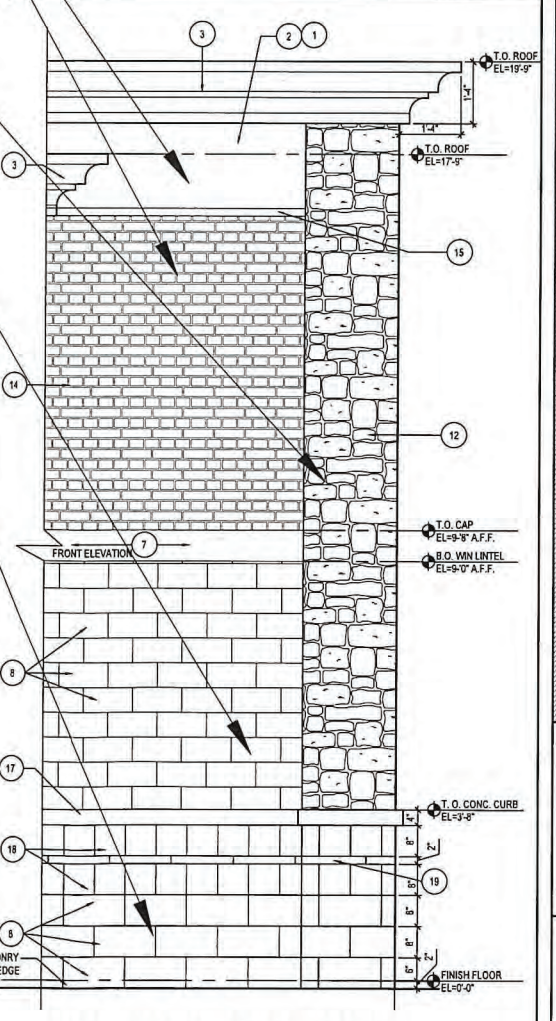


**03 WEST / REAR ELEVATION**  
SCALE: 1/8" = 1'-0"



**04 SOUTH / SIDE ELEVATION**  
SCALE: 1/8" = 1'-0"

- KEYED NOTES**
- 1 CONCRETE CEMENT STUCCO COLOR TYPE 1
  - 2 CONCRETE CEMENT STUCCO COLOR TYPE 2
  - 3 1 1/2" THICK CONCRETE CEMENT STUCCO PLASTER & WIRE MESH SYSTEM ON 1 1/2" TREATED PLYWOOD PARAPET CAP / MOLDING.
  - 4 8" X 8" W PRECAST CMU CURB WITH DRAINAGE SLOPE AND DRIP EDGE.
  - 5 STAINLESS FINISHED ANODIZED ALUMINUM STOREFRONT AND 1" DOUBLE INSULATED GLAZING SYSTEM
  - 6 CLEAN STAINLESS FINISHED ANODIZED ALUMINUM STOREFRONT FRAME WITH 1" INSULATED GLASS DOOR & 1" DOUBLE INSULATED WINDOW GLAZING SYSTEM.
  - 7 8" H X 8" W PRECAST CONCRETE CURB WITH DRAINAGE SLOPE & DRIP EDGE.
  - 8 8" CONCRETE SPLIT FACE CMU. COLOR AS APPROVED BY ARCHITECT.
  - 9 FACTORY FINISHED EXTERIOR HOLLOW METAL DOOR.
  - 10 PROPOSED FUTURE TENANT STOREFRONT SIGNAGE LOCATION BY TENANT PER LANDLORD PRIOR APPROVALS.
  - 11 PROPOSED FUTURE TENANT REAR SIGNAGE LOCATION BY TENANT PER LANDLORD PRIOR APPROVALS.
  - 12 DIMENSIONED THIN-SET STONE CLADDING WITH COLOR & TEXTURE AS APPROVED BY ARCHITECT.
  - 13 PRE-FINISHED 2" SLOPING ALUMINUM STANDING SEAMS METAL ROOF CANOPY WITH 2" X 2" SQUARE TUBES FABRICATED METAL SUPPORT.
  - 14 2" X CONCRETE SPLIT FACE C.M.U. COLOR & TEXTURE AS APPROVED BY ARCHITECT.
  - 15 2" "C" SHAPED ALUMINUM CHANNEL CONCRETE STUCCO REVEAL JOINT TREATMENT AS INDICATED.
  - 16 OUTLINE OF PARAPET WALL BEYOND.
  - 17 4" WAINSCOAT CONCRETE CURB (TYPICAL) COLOR BY ARCHITECT.
  - 18 8" X SMOOTH FACE C.M.U. COLOR BY ARCHITECT
  - 19 2" X 16" SPLIT-FACE C.M.U. (TYPICAL). COLOR BY ARCHITECT.



**05 MATERIAL CALLOUTS**  
SCALE: 1/2" = 1'-0"

**DR. MAURICE UGWIBE, MD**  
7047 HIDDEN HARBOR RD., MIRA LAGO, GRAND PRAIRIE, TX. 75054

**E. EVANS ASSOCIATES, INC.**  
ARCHITECTURE - ENGINEERING - CONSTRUCTION - INSPECTIONS  
13140 NORTH COIT ROAD - SUITE 230  
DALLAS, TEXAS 75240  
WWW.EVANSASSOCIATES.COM  
PH: (214) 340-4440 FAX: (214) 340-0265

ARCHITECT: \_\_\_\_\_

SEAL: \_\_\_\_\_

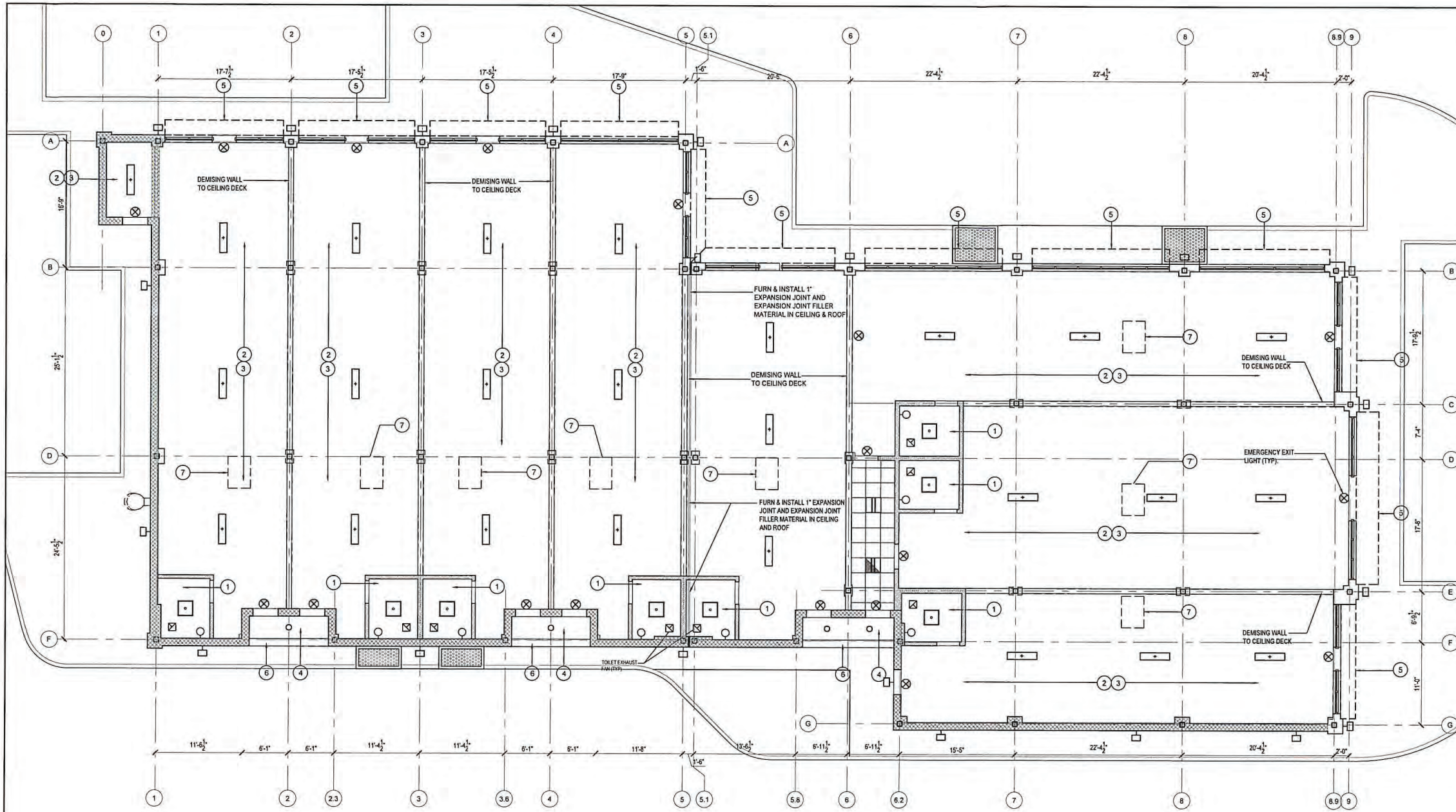
Revisions	Issues

**COOPER STREET SHOPPING CENTER**  
982 TURNER WARNELL ROAD  
MANSFIELD, TEXAS 76063

SHEET NAME: **ELEVATIONS**

Job 12092024  
Date 03-30-2025  
Drawn de  
Check EE  
PRF  
Sheet A5.0  
of Sheets





**01 REFLECTED CEILING PLAN**  
SCALE: 1/8" = 1'-0"

**GENERAL NOTES**

- A. VERIFY ALL PLACEMENTS OF LIGHTS WITH OWNER PRIOR TO INSTALLATION
- B. SEE ELECTRICAL PLANS FOR ADDITIONAL LIGHTING INFORMATION
- C. ALL CEILING MATERIAL SHALL NOT EXCEED FLAME CLASS II - FLAME SPREAD INDEX 25-75
- D. GENERAL CONTRACTOR SHALL BE RESPONSIBLE FOR COORDINATING THE WORK OF ALL TRADES INVOLVED IN THE CEILING WORK TO ENSURE THAT PROPER CLEARANCES FOR DUCTS, LIGHTS, PIPING, ETC. ARE MET AND THAT THE CEILING HEIGHTS NOTED ON THE DRAWING ARE MAINTAINED
- E. GENERAL CONTRACTOR TO VERIFY REQUIREMENTS AND QUANTITIES OF FIRE PROTECTION DEVICES INCLUDING SMOKE DETECTORS, DUCT SMOKE DETECTORS, FIRE ALARMS, RELATED SPEAKERS, STROBES, ETC. LIFE SAFETY INSTALLATIONS TO MEET REQUIREMENTS OF ALL APPLICABLE CODES AND ORDINANCES
- F. ELECTRICAL CONTRACTOR SHALL SUPPLY 10% ADDITIONAL SPARE, OF ALL LAMP TYPE. TO BE LEFT AT JOB SITE AT END OF JOB.
- G. ALL LIGHTING SHALL BE 20 FC AT 30" A.F.F., LIGHTING ABOVE FOOD OR UTENSILS SHALL BE SHATTERPROOF.
- H. CAULK JOINTS BETWEEN CEILING GRID AND ADJACENT SURFACES.
- I. CEILING CONDITIONS WHICH CAUSE TYPICAL CHANGES MUST BE VERIFIED WITH OWNER AND LIGHTING VENDOR

**KEY NOTES 'O'**

- 1 PAINTED 1/2" GYPSUM BOARD CEILING @ 8'-0" AFF.
- 2 CEILING IS EXPOSED TO AT 9'-0" AFF.
- 3 SUSPENDED LIGHT FIXTURES FROM STRUCTURES ABOVE.
- 4 CONCRETE SOFFIT CEILING AT 9'-0" AFF. WITH CONTINUOUS 4"W ALUMINUM SOFFIT RELIEF VENT.
- 5 OUTLINE OF METAL CANOPY.
- 6 CMU BLOCKWALL FURR DOWN AT 9'-0" AFF.
- 7 OUTLINE OF RTU ON ROOF ABOVE.

**KEYED NOTES 'O'**

- 1 REFERENCE ELECTRICAL SHEETS FOR LIGHT FIXTURE TYPES.

**LIGHT FIXTURE LEGENDS**

- 1x4' SUSPENDED FLUORESCENT LUMINAIRE FIXTURE WITH ACRYLIC LENS  
LITHONIA 2GTL2 3300LM LP840 - 120 V/1-28 VA
- 2x2' FLUORESCENT LUMINAIRE FIXTURE WITH ACRYLIC LENS  
LITHONIA 2GTL2 3300LM LP840 - 120 V/1-28 VA
- 2x2' FLUORESCENT LUMINAIRE EMERGENCY LIGHT FIXTURE WITH ACRYLIC LENS.  
LITHONIA 2GTL2 3300LM LP840 - 120 V/1-28 VA
- LED TROFFER, 2' X 4' FLUORESCENT LIGHT WITH ACRYLIC LENS  
LITHONIA 2GTL24 4400LM LP840 - 120 V/1-47 VA
- LED TROFFER, 2' X 4' FLUORESCENT EMERGENCY LIGHT WITH ACRYLIC LENS.  
LITHONIA 2GTL24 4400LM LP840 - 120 V/1-47 VA
- 2x2' FLUORESCENT LUMINAIRE FIXTURE WITH PARABOLIC LENS.  
LITHONIA - BLC 2x2 3300LM 40K ADSM - 120 V/1-30 VA
- 6" RECESSED LED CAN LUMINAIRE LIGHT FIXTURE  
LITHONIA - 65BEMW LED 40K 90CRI M6 - 120 V/1-12 VA
- EMERGENCY EXIT SIGN - LITHONIA: LE S W R 120 / 277 EL N 120 V/1-277 VA
- X-1 EXIT SIGN  
Lithonia: LRP 1 RC 120/277 EL N
- X-2 EXIT SIGN  
Lithonia: LRP 2 RMR 120/270 EL N
- 1x4' SUSPENDED FLOURESCENT LIGHT FIXTURE
- EXTERIOR METAL HALIDE
- EMERGENCY POWER BATTERY PACK BALLAST LIGHT FIXTURE
- SUSPENDED PENDANT LIGHT FIXTURE AS APPROVED BY OWNER.
- TRACK LIGHTS

**DR. MAURICE UGWIBE, MD**

OWNERS: 7047 HIDDEN HARBOR RD.,  
MIRA LAGO,  
GRAND PRAIRIE, TX. 75054

ARCHITECT: **E. EVANS ASSOCIATES, INC.**  
ARCHITECTURE - ENGINEERING - CONSTRUCTION - INSPECTORS  
13140 NORTH COIT ROAD - SUITE 230  
DALLAS, TEXAS 75240  
PH: (214) 346-4440 FAX: (214) 346-0885

SEAL:

Revisions	Issues

**COOPER STREET SHOPPING CENTER**  
982 TURNER WARNELL ROAD  
MANSFIELD, TEXAS 76063

SHEET NAME:  
**REFLECTED CEILING PLAN**

Job 12092024  
Date 03-30-2025  
Drawn de  
Check EE  
PRF  
Sheet **A3.0**  
of Sheets

