



RAIL SERVED WAREHOUSE SPACE AVAILABLE ON 1900 WEST

Portfolio Summary

- Two Buildings Available:
 - » Building S: 16,364 SF (South End)
 - » Building N: 7,709 SF (North End)
- Excellent location with easy access on 1900 West in West Haven
- Zoning: M-1
- 5.4 Acre fully improved, shared fenced yard



Craig Boyer
Associate Director
+1 801 698 333
craig.boyer@cushwake.com
cushmanwakefield.com

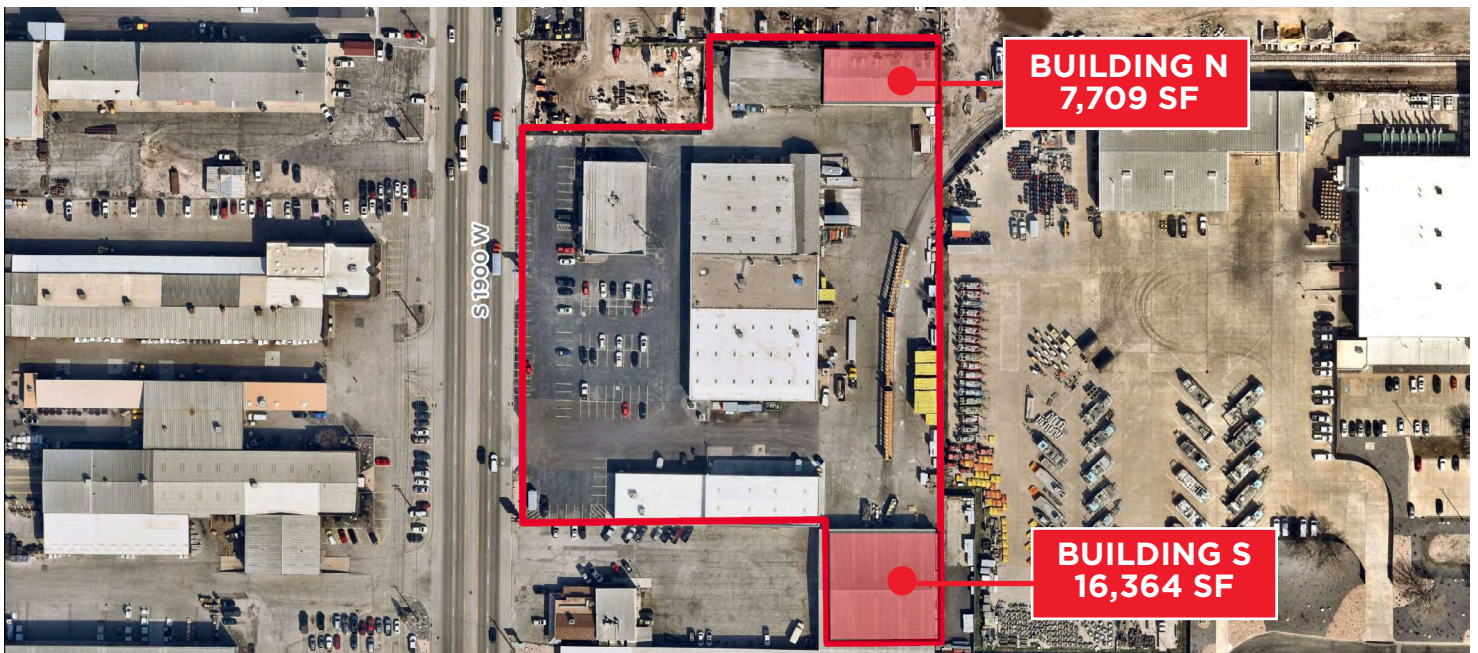
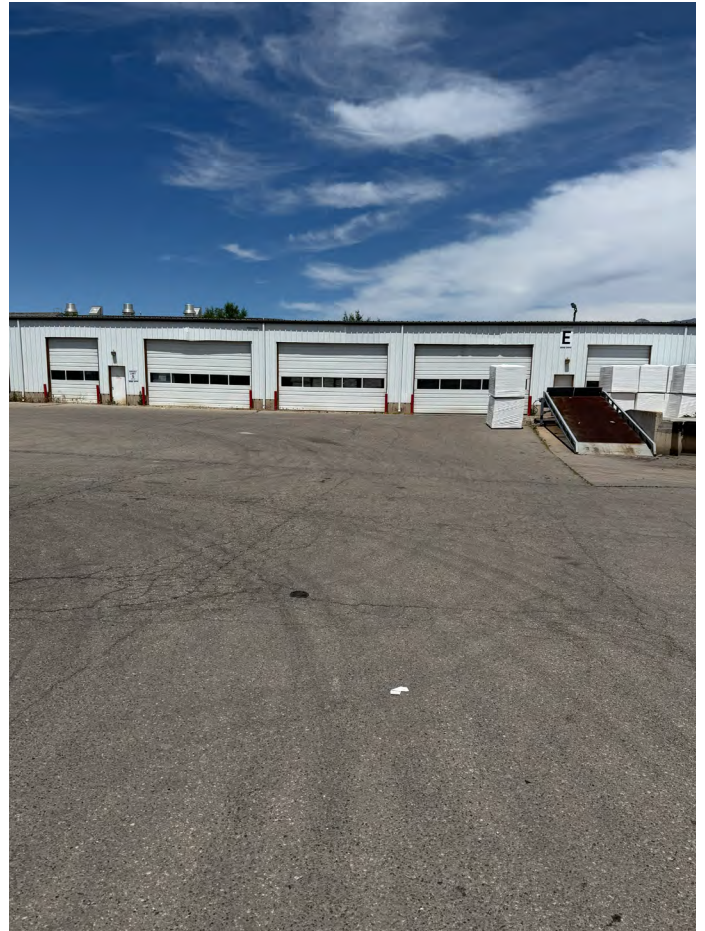
LUMBER WAREHOUSE BUILDING S

SIZE	16,364 SF
LEASE RATE	\$0.95 PSF/NNN
OFFICE	748 SF
WAREHOUSE	15,616 SF
POWER	120/208 V, 3-phase
LOADING	2 Ground Level Doors 20' x 14'
CLEAR HEIGHT	15' with 22' on Center

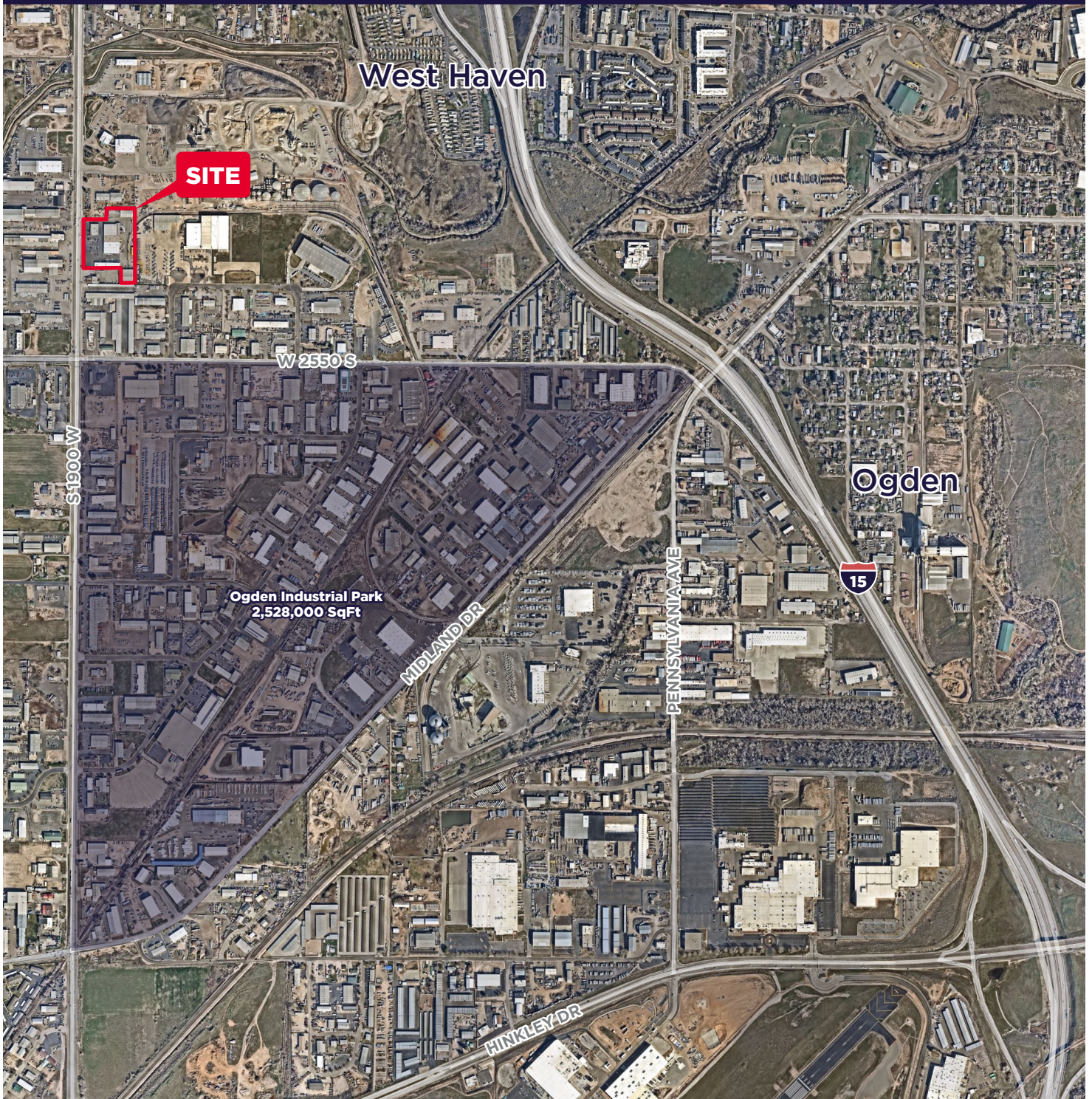


STORAGE WAREHOUSE BUILDING N

SIZE	7,709 SF
LEASE RATE	\$1.15 PSF/NNN
POWER	120/208 V, 3-phase
GL DOORS	(3) 20' x 12' and (1) 10' x 12'
DH DOORS	(1) 10' x 12'
CLEAR HEIGHT	14'



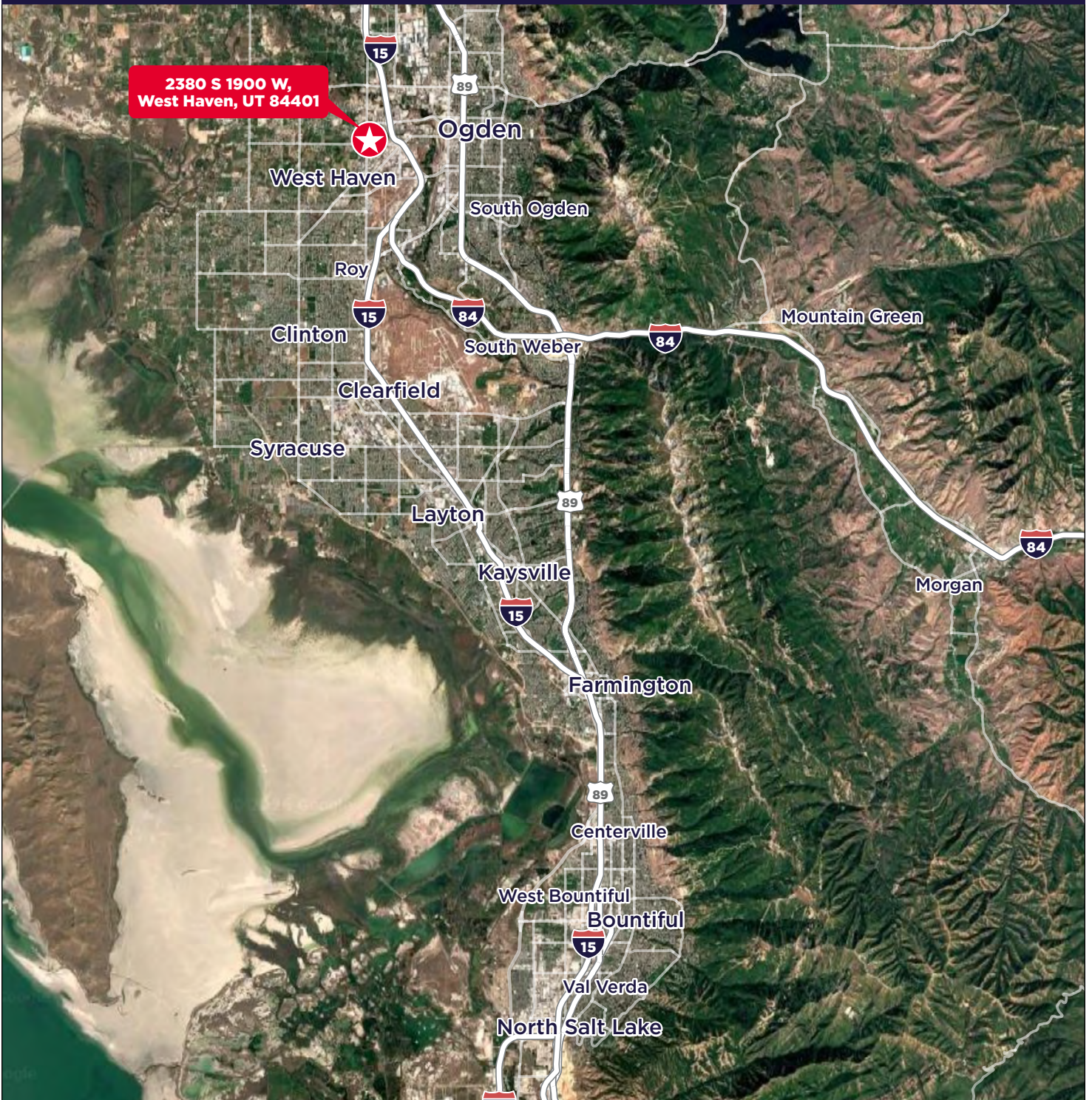
Murphy Door
2380 South 1900 West, West Haven, UT



Craig Boyer
Associate Director
+1 801 698 3333
craig.boyer@cushwake.com

 **CUSHMAN &
WAKEFIELD**
cushmanwakefield.com

Murphy Door
2380 South 1900 West, West Haven, UT



Craig Boyer
Associate Director
+1 801 698 3333
craig.boyer@cushwake.com

CUSHMAN & WAKEFIELD
cushmanwakefield.com