

# Sierra Business Center

## Office/Flex Mixed Use Property

Building 6465: ±4,204 RSF

Building 6479: ±1,200 RSF

Building 6491: ±2,023 RSF

Building 6503: ±2,477 RSF

Building 6521: ±5,515 RSF

6465-6521 Sierra Lane  
Dublin, CA 94568  
[www.cbre.com/walnutcreek](http://www.cbre.com/walnutcreek)

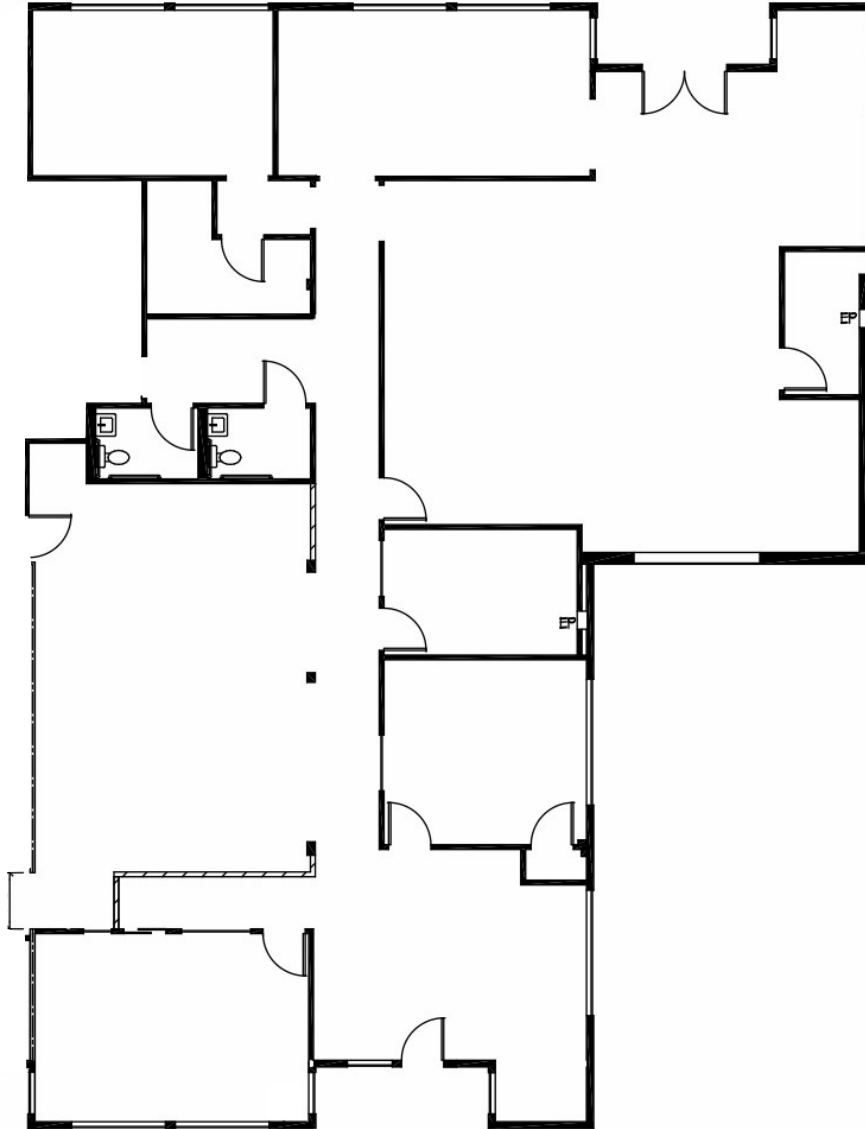


### Property Features

- + Convenient access to I-580 and I-680
- + ±18 foot ceiling height potential
- + Walking distance to restaurants, shopping and retail amenities
- + Grade level doors available
- + Parking at ±3/1,000 SF
- + Direct suite access from parking lot
- + Comcast and high-speed Fiber service available
- + Outdoor seating areas

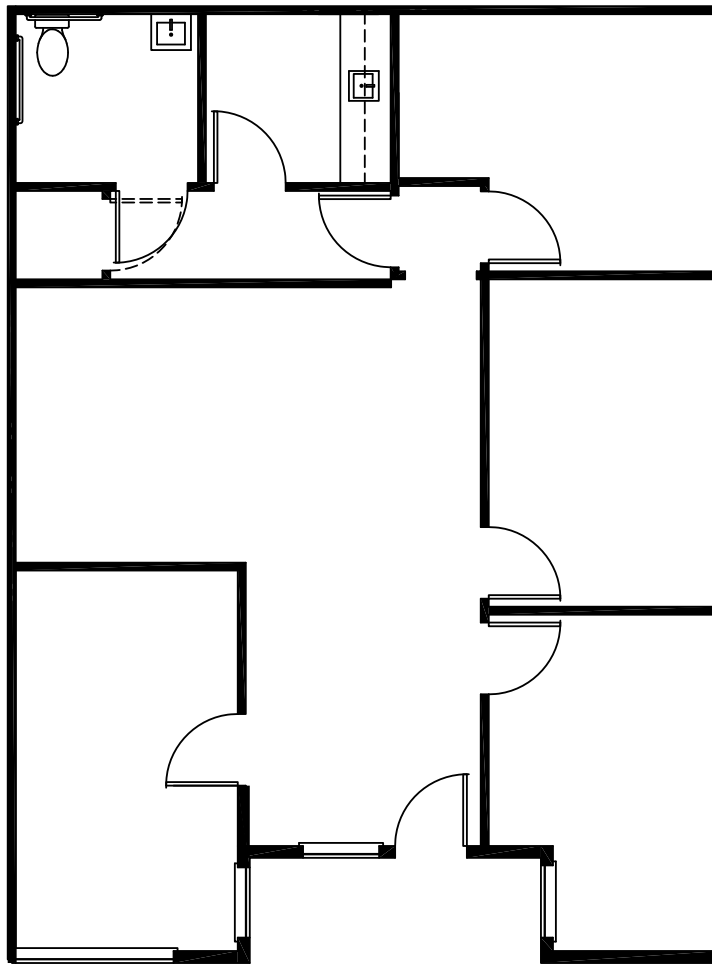
Floor Plan

Building 6465 | ±4,204 RSF | Available Now



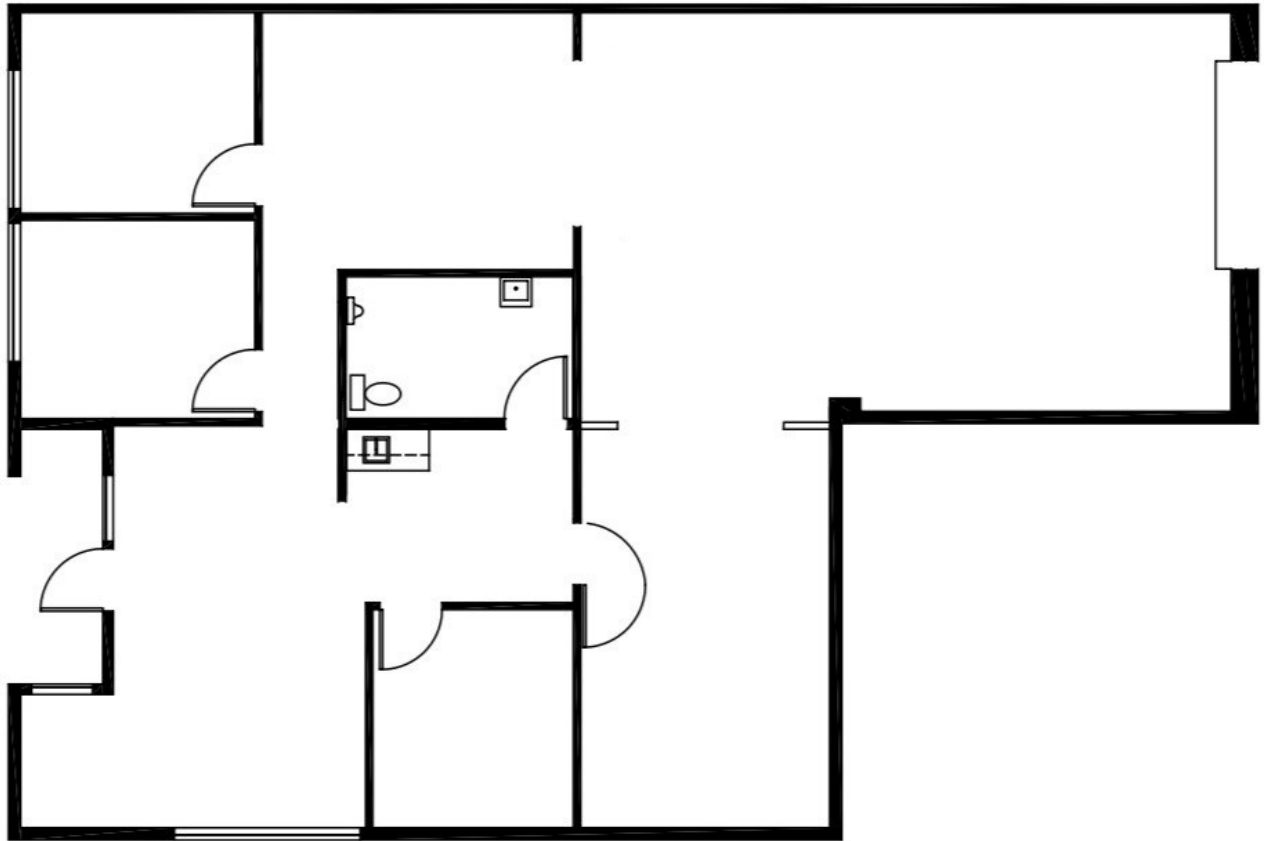
Floor Plan

Building 6479 | ±1,200 RSF | Available September 2026



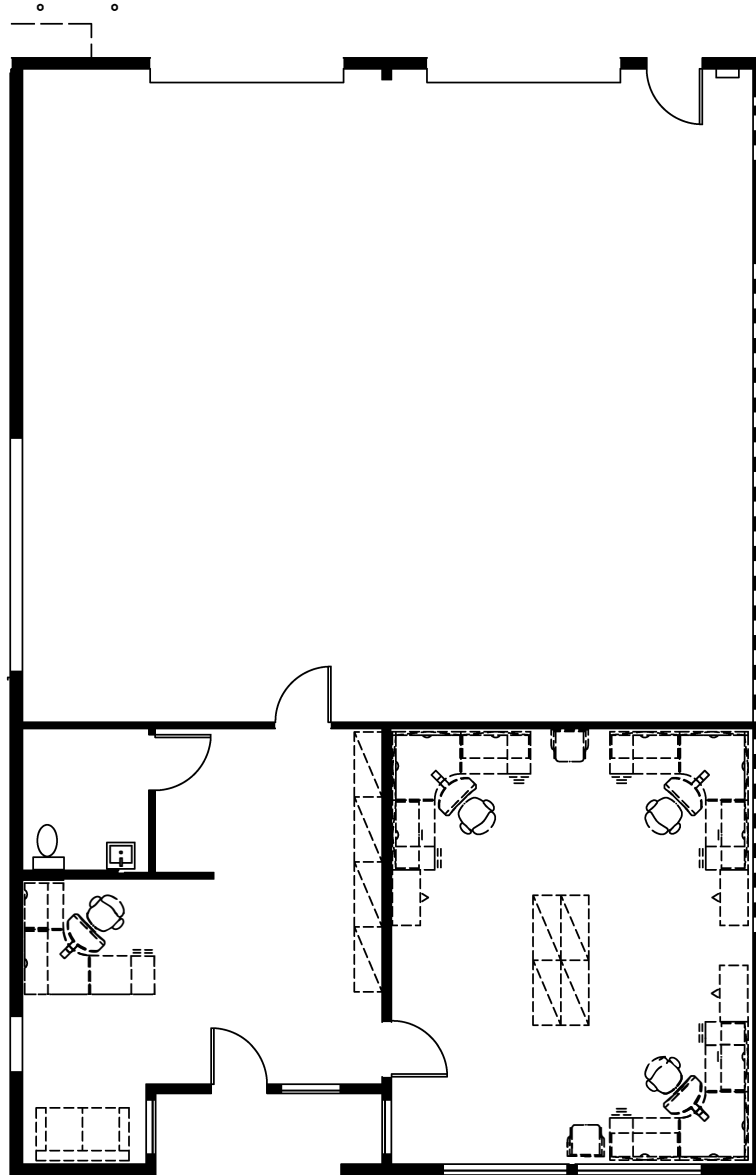
Floor Plan

Building 6491 | ±2,023 RSF | Available Now



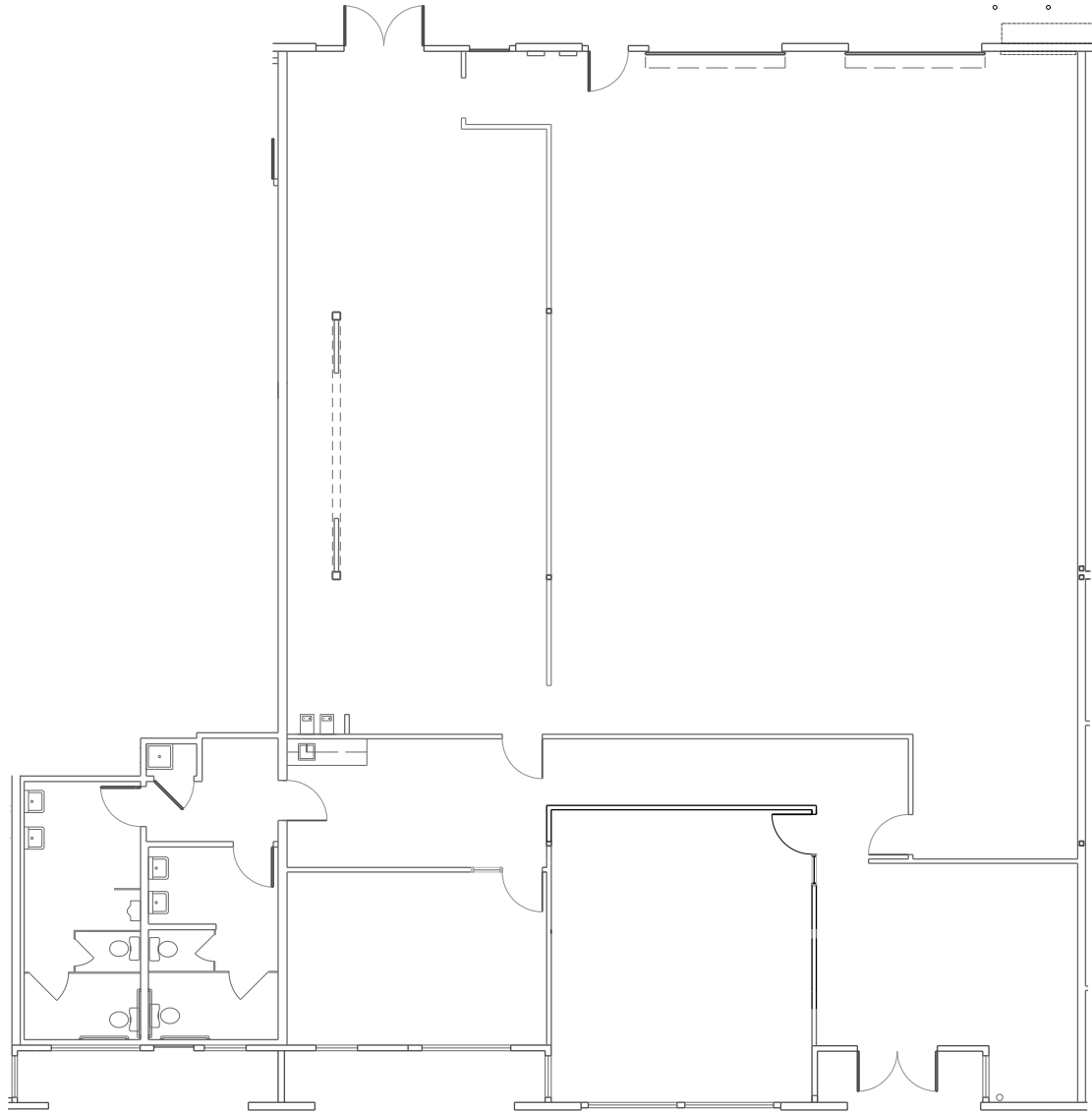
Floor Plan

Building 6503 | ±2,477 RSF | Available Now



Floor Plan

Building 6521 | ±5,515 RSF | Available Now





## Freeway Access



## Contact Us

**Jeff Birnbaum**

Senior Vice President  
+1 925 251 4601  
jeff.birnbaum@cbre.com  
Lic. 01185268

**Adam Ebner**

Senior Vice President  
+1 510 697 3331  
adam.ebner@cbre.com  
Lic. 01213890

**CBRE, Inc**

1676 N California Blvd, Suite 500  
Walnut Creek, CA 94596  
+ 925 296 7700  
cbre.com/walnutcreek

© 2026 CBRE, Inc. All rights reserved. This information has been obtained from sources believed reliable, but has not been verified for accuracy or completeness. You should conduct a careful, independent investigation of the property and verify all information. Any reliance on this information is solely at your own risk. CBRE and the CBRE logo are service marks of CBRE, Inc. All other marks displayed on this document are the property of their respective owners, and the use of such logos does not imply any affiliation with or endorsement of CBRE. Photos herein are the property of their respective owners. Use of these images without the express written consent of the owner is prohibited.