

COMMERCIAL LAND

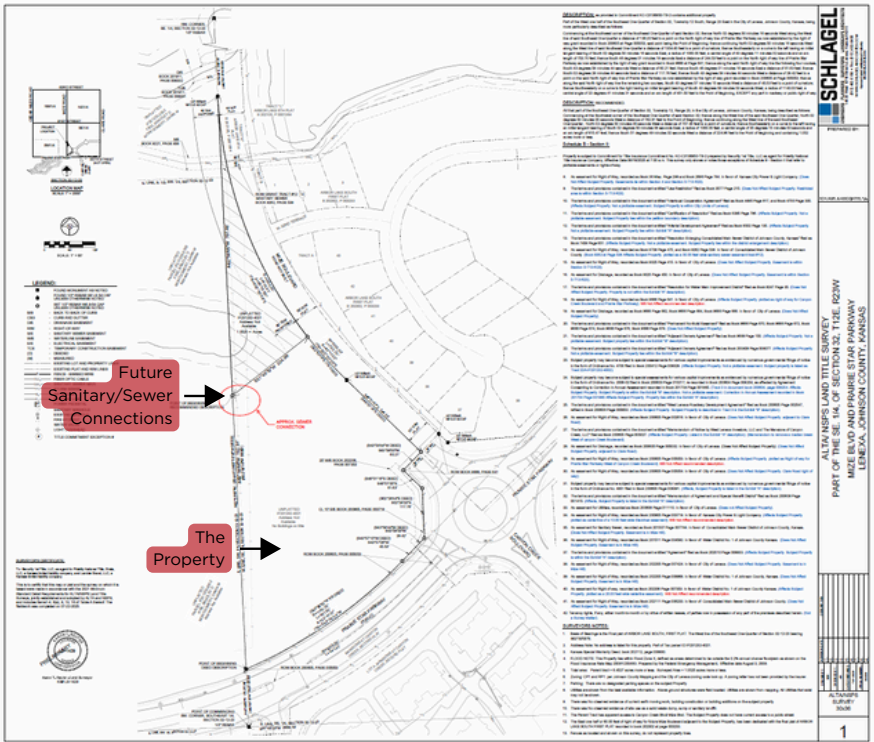
CANYON CREEK PKWY & PRAIRIE STAR PKWY
LENEXA, KS 66227



REECE

COMMERCIAL REAL ESTATE

a Berkshire Hathaway Affiliate



JIM THOME



913.548.8700



JTHOME@REECECOMMERCIAL.COM

The information above has been obtained from sources believed reliable. While we do not doubt its accuracy we have not verified it and make no guarantee, warranty or representation about it. It is your responsibility to independently confirm its accuracy and completeness. Any projections, opinions, assumptions, or estimates used are for example only and do not represent the current or future performance of the property. You and your advisors should conduct a careful, independent investigation of the property to determine to your satisfaction the suitability of the property for your needs. © 2020

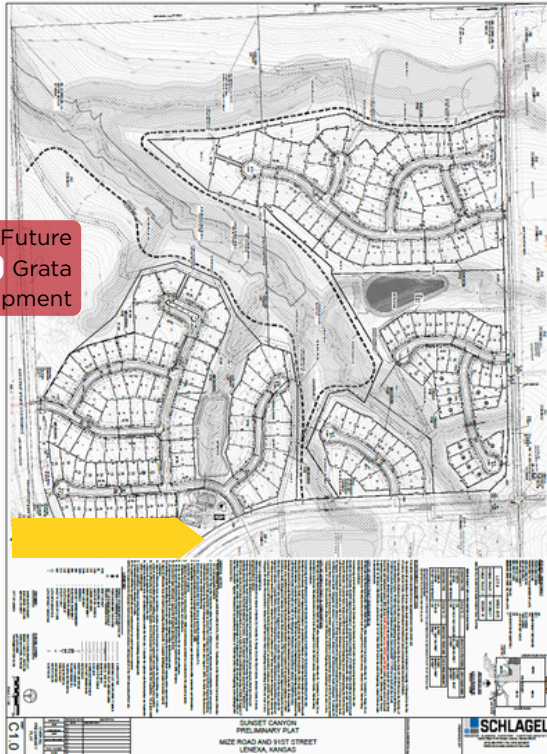
COMMERCIAL LAND

CANYON CREEK PKWY & PRAIRIE STAR PKWY
LENEXA, KS 66227



REECE
COMMERCIAL REAL ESTATE

a Berkshire Hathaway Affiliate



Future
Grata
Development



LOT	DESCRIPTION
1	0.10 AC. RESIDENTIAL LOT
2	0.10 AC. RESIDENTIAL LOT
3	0.10 AC. RESIDENTIAL LOT
4	0.10 AC. RESIDENTIAL LOT
5	0.10 AC. RESIDENTIAL LOT
6	0.10 AC. RESIDENTIAL LOT
7	0.10 AC. RESIDENTIAL LOT
8	0.10 AC. RESIDENTIAL LOT
9	0.10 AC. RESIDENTIAL LOT
10	0.10 AC. RESIDENTIAL LOT
11	0.10 AC. RESIDENTIAL LOT
12	0.10 AC. RESIDENTIAL LOT
13	0.10 AC. RESIDENTIAL LOT
14	0.10 AC. RESIDENTIAL LOT
15	0.10 AC. RESIDENTIAL LOT
16	0.10 AC. RESIDENTIAL LOT
17	0.10 AC. RESIDENTIAL LOT
18	0.10 AC. RESIDENTIAL LOT
19	0.10 AC. RESIDENTIAL LOT
20	0.10 AC. RESIDENTIAL LOT
21	0.10 AC. RESIDENTIAL LOT
22	0.10 AC. RESIDENTIAL LOT
23	0.10 AC. RESIDENTIAL LOT
24	0.10 AC. RESIDENTIAL LOT
25	0.10 AC. RESIDENTIAL LOT
26	0.10 AC. RESIDENTIAL LOT
27	0.10 AC. RESIDENTIAL LOT
28	0.10 AC. RESIDENTIAL LOT
29	0.10 AC. RESIDENTIAL LOT
30	0.10 AC. RESIDENTIAL LOT
31	0.10 AC. RESIDENTIAL LOT
32	0.10 AC. RESIDENTIAL LOT
33	0.10 AC. RESIDENTIAL LOT
34	0.10 AC. RESIDENTIAL LOT
35	0.10 AC. RESIDENTIAL LOT
36	0.10 AC. RESIDENTIAL LOT
37	0.10 AC. RESIDENTIAL LOT
38	0.10 AC. RESIDENTIAL LOT
39	0.10 AC. RESIDENTIAL LOT
40	0.10 AC. RESIDENTIAL LOT
41	0.10 AC. RESIDENTIAL LOT
42	0.10 AC. RESIDENTIAL LOT
43	0.10 AC. RESIDENTIAL LOT
44	0.10 AC. RESIDENTIAL LOT
45	0.10 AC. RESIDENTIAL LOT
46	0.10 AC. RESIDENTIAL LOT
47	0.10 AC. RESIDENTIAL LOT
48	0.10 AC. RESIDENTIAL LOT
49	0.10 AC. RESIDENTIAL LOT
50	0.10 AC. RESIDENTIAL LOT
51	0.10 AC. RESIDENTIAL LOT
52	0.10 AC. RESIDENTIAL LOT
53	0.10 AC. RESIDENTIAL LOT
54	0.10 AC. RESIDENTIAL LOT
55	0.10 AC. RESIDENTIAL LOT
56	0.10 AC. RESIDENTIAL LOT
57	0.10 AC. RESIDENTIAL LOT
58	0.10 AC. RESIDENTIAL LOT
59	0.10 AC. RESIDENTIAL LOT
60	0.10 AC. RESIDENTIAL LOT
61	0.10 AC. RESIDENTIAL LOT
62	0.10 AC. RESIDENTIAL LOT
63	0.10 AC. RESIDENTIAL LOT
64	0.10 AC. RESIDENTIAL LOT
65	0.10 AC. RESIDENTIAL LOT
66	0.10 AC. RESIDENTIAL LOT
67	0.10 AC. RESIDENTIAL LOT
68	0.10 AC. RESIDENTIAL LOT
69	0.10 AC. RESIDENTIAL LOT
70	0.10 AC. RESIDENTIAL LOT
71	0.10 AC. RESIDENTIAL LOT
72	0.10 AC. RESIDENTIAL LOT
73	0.10 AC. RESIDENTIAL LOT
74	0.10 AC. RESIDENTIAL LOT
75	0.10 AC. RESIDENTIAL LOT
76	0.10 AC. RESIDENTIAL LOT
77	0.10 AC. RESIDENTIAL LOT
78	0.10 AC. RESIDENTIAL LOT
79	0.10 AC. RESIDENTIAL LOT
80	0.10 AC. RESIDENTIAL LOT
81	0.10 AC. RESIDENTIAL LOT
82	0.10 AC. RESIDENTIAL LOT
83	0.10 AC. RESIDENTIAL LOT
84	0.10 AC. RESIDENTIAL LOT
85	0.10 AC. RESIDENTIAL LOT
86	0.10 AC. RESIDENTIAL LOT
87	0.10 AC. RESIDENTIAL LOT
88	0.10 AC. RESIDENTIAL LOT
89	0.10 AC. RESIDENTIAL LOT
90	0.10 AC. RESIDENTIAL LOT
91	0.10 AC. RESIDENTIAL LOT
92	0.10 AC. RESIDENTIAL LOT
93	0.10 AC. RESIDENTIAL LOT
94	0.10 AC. RESIDENTIAL LOT
95	0.10 AC. RESIDENTIAL LOT
96	0.10 AC. RESIDENTIAL LOT
97	0.10 AC. RESIDENTIAL LOT
98	0.10 AC. RESIDENTIAL LOT
99	0.10 AC. RESIDENTIAL LOT
100	0.10 AC. RESIDENTIAL LOT

SUNDET CANYON
PRELIMINARY PLAT
142E ROAD AND 91ST STREET
LENEXA, KANSAS

SCHLAGEL
ENGINEERS & ARCHITECTS



**JIM
THOME**



913.548.8700




JTHOME@REECECOMMERCIAL.COM

The information above has been obtained from sources believed reliable. While we do not doubt its accuracy we have not verified it and make no guarantee, warranty or representation about it. It is your responsibility to independently confirm its accuracy and completeness. Any projections, opinions, assumptions, or estimates used are for example only and do not represent the current or future performance of the property. You and your advisors should conduct a careful, independent investigation of the property to determine to your satisfaction the suitability of the property for your needs. © 2020



Demographic Summary Report

Prairie Star & Canyon Creek Pkwy's				
9550 Zarda Dr, Lenexa, KS 66227				
Building Type: Land	Total Available: 0 SF			
Class: -	% Leased: 0%			
RBA: -	Rent/SF/Yr: -			
Typical Floor: -				
				
Radius	1 Mile	3 Mile	5 Mile	
Population				
2023 Projection	2,289	18,398	55,183	
2018 Estimate	2,074	17,211	51,831	
2010 Census	1,254	13,735	42,601	
Growth 2018 - 2023	10.37%	6.90%	6.47%	
Growth 2010 - 2018	65.39%	25.31%	21.67%	
2018 Population by Hispanic Origin				
2018 Population	65	545	2,399	
2018 Population				
White	1,833 88.38%	15,787 91.73%	46,628 89.96%	
Black	47 2.27%	312 1.81%	1,606 3.10%	
Am. Indian & Alaskan	9 0.43%	55 0.32%	220 0.42%	
Asian	148 7.14%	759 4.41%	2,247 4.34%	
Hawaiian & Pacific Island	0 0.00%	1 0.01%	7 0.01%	
Other	36 1.74%	297 1.73%	1,124 2.17%	
U.S. Armed Forces	0	7	55	
Households				
2023 Projection	796	6,329	19,198	
2018 Estimate	722	5,917	18,015	
2010 Census	438	4,695	14,699	
Growth 2018 - 2023	10.25%	6.96%	6.57%	
Growth 2010 - 2018	64.84%	26.03%	22.56%	
Owner Occupied	680 94.18%	5,636 95.25%	15,697 87.13%	
Renter Occupied	42 5.82%	281 4.75%	2,319 12.87%	
2018 Households by HH Income				
Income: <\$25,000	22 3.05%	170 2.87%	722 4.01%	
Income: \$25,000 - \$50,000	90 12.48%	543 9.18%	1,773 9.84%	
Income: \$50,000 - \$75,000	88 12.21%	658 11.12%	2,353 13.06%	
Income: \$75,000 - \$100,000	167 23.16%	681 11.51%	2,602 14.44%	
Income: \$100,000 - \$125,000	123 17.06%	855 14.45%	3,150 17.48%	
Income: \$125,000 - \$150,000	86 11.93%	671 11.34%	1,979 10.98%	
Income: \$150,000 - \$200,000	113 15.67%	1,081 18.27%	2,571 14.27%	
Income: \$200,000+	32 4.44%	1,258 21.26%	2,867 15.91%	
2018 Avg Household Income	\$109,664	\$150,774	\$134,347	
2018 Med Household Income	\$99,026	\$126,919	\$112,369	



**JIM
THOME**



913.548.8700



JTHOME@REECECOMMERCIAL.COM