

FOR LEASE

The Princess Theatre

10337 Whyte Avenue
Edmonton, AB



Ian Fletcher

(780) 913-4663

IanFletcher@MaxWellCommercial.ca

Robert Halpern

(780) 975-3898

RobertHalpern@MaxWellCommercial.ca

MaxWell Commercial

4107 99 Street

Edmonton, AB T6E 3N4

(780) 450-6300

www.MaxWellCommercial.ca



Commercial

MaxWell Polaris

FOR LEASE

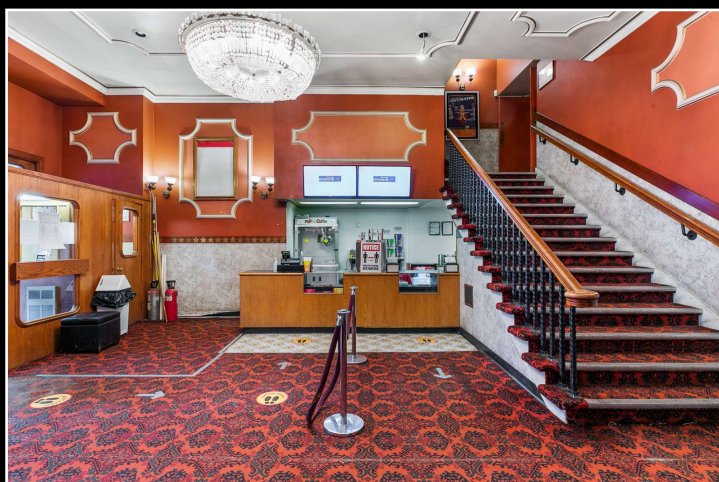
The Princess Theatre

10337 Whyte Avenue
Edmonton, AB

- Built in 1914 by James McKernan
- Oldest Surviving Theatre in Edmonton
- Provincial Historic Site
- First Marble-Faced Building in Western Canada
- Two Theatres: 360 & 90 Seats
- Equipment Included

[Click for Drone Video](#)

[Click for Additional Photos](#)



Lobby



Princess Theatre



Balcony Seating



Princess II

Ian Fletcher
(780) 913-4663
IanFletcher@MaxWellCommercial.ca

Robert Halpern
(780) 975-3898
RobertHalpern@MaxWellCommercial.ca

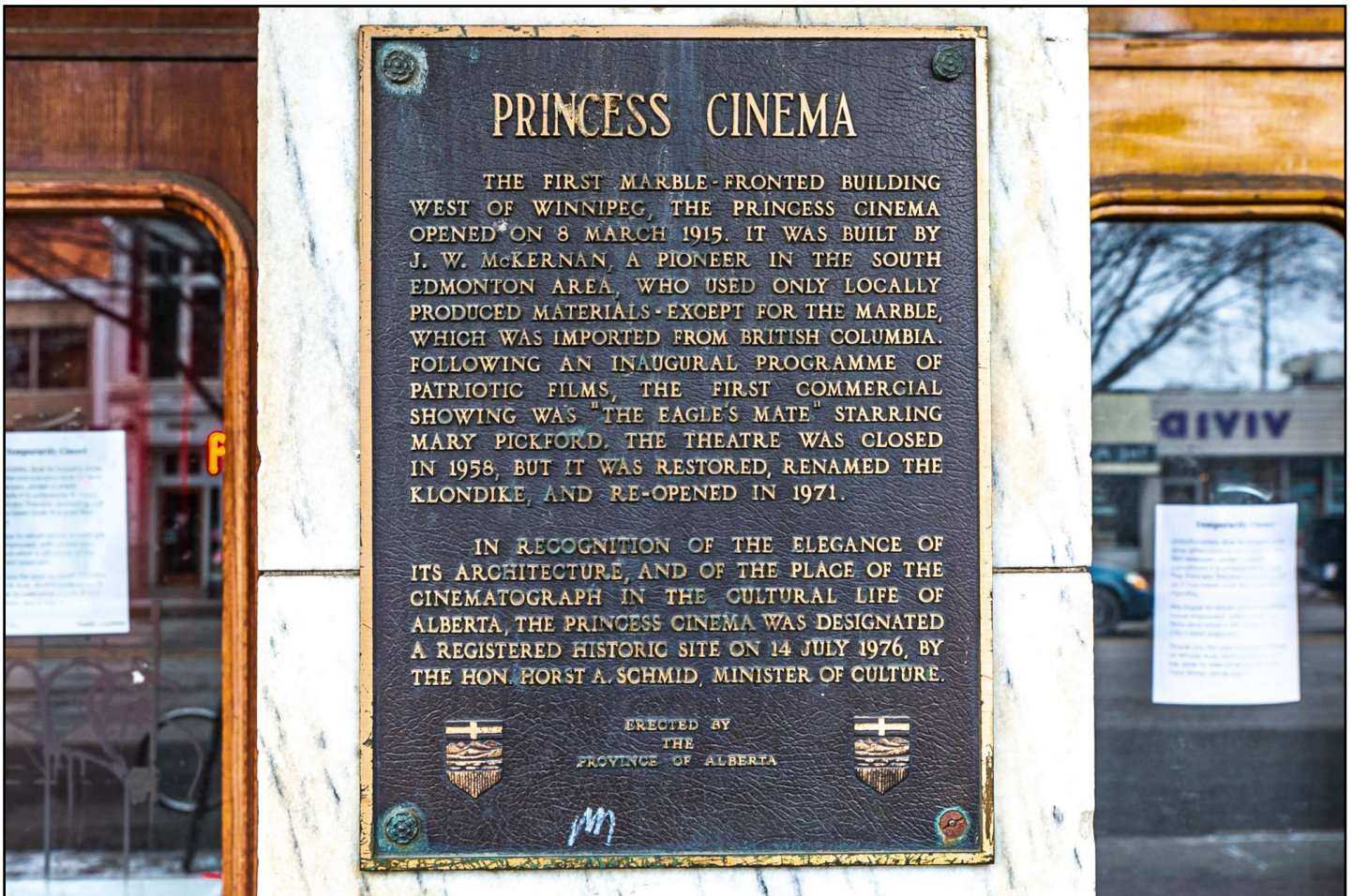
FOR LEASE

The Princess Theatre

10337 Whyte Avenue
Edmonton, AB

LEASE RATE	Market
OP COSTS (2021)	To Be Confirmed
TI ALLOWANCE	Negotiable
POSSESSION	Immediate

SIZE	Leasable: 9,680 SF +/- Total with Undeveloped 3rd Floor: 14,270 SF +/-
SIGNAGE	Building and Marquee Signage
USE	Preference for Similar Use Basement Can be Leased Separately
TERM	5 - 10 Years



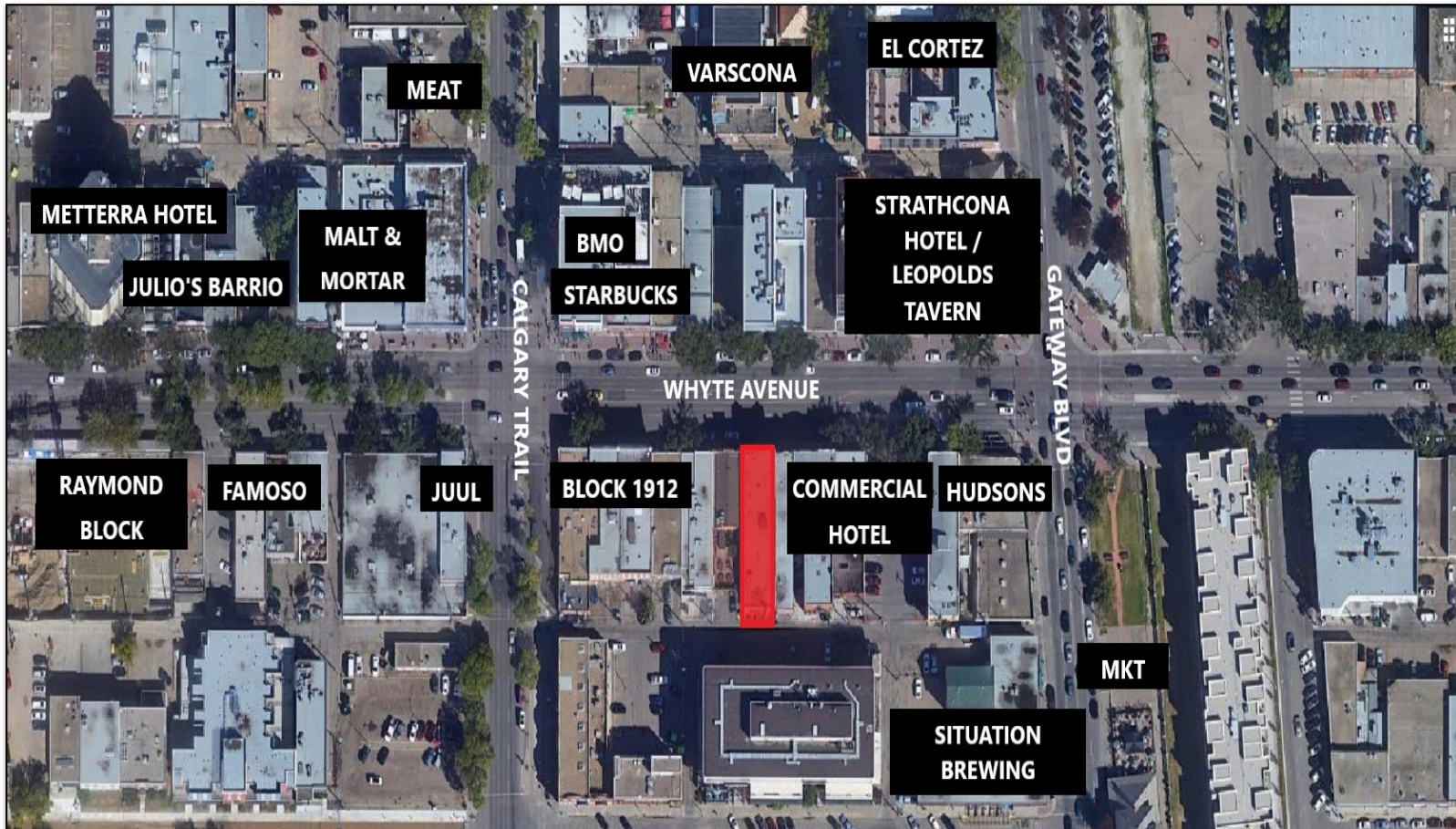
Ian Fletcher
(780) 913-4663
IanFletcher@MaxWellCommercial.ca

Robert Halpern
(780) 975-3898
RobertHalpern@MaxWellCommercial.ca

FOR LEASE

The Princess Theatre

10337 Whyte Avenue
Edmonton, AB



Ian Fletcher
(780) 913-4663
IanFletcher@MaxWellCommercial.ca

Robert Halpern
(780) 975-3898
RobertHalpern@MaxWellCommercial.ca