

FOR SALE

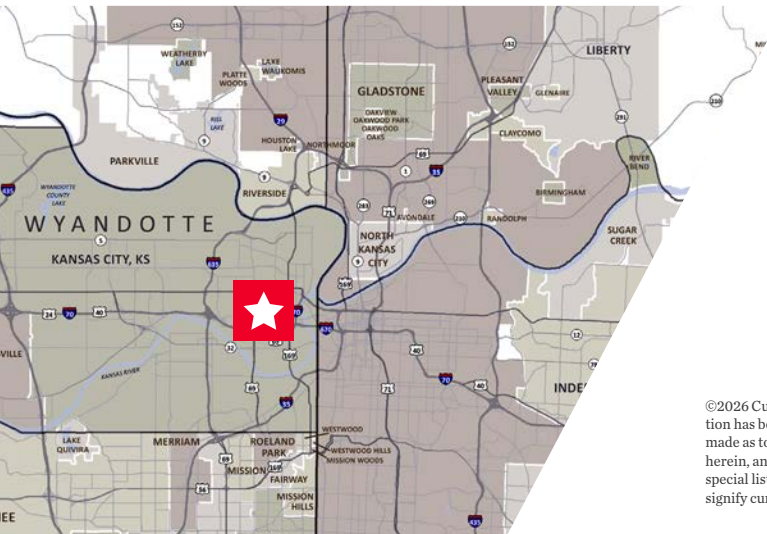


# 1 N 14TH STREET & 1320 CENTRAL AVE

Kansas City, KS 66102

## PROPERTY HIGHLIGHTS

- 10,191 Total Gross SF Building
- Well maintained - minimal deferred maintenance
- New roof in 2024
- 4,000 SF 1st floor dental office
- 9 Apartment units
- 100% Occupied
- Tenants responsible for electric and gas (separately metered)
- Landlord pays water and trash
- Lot size: .34 acres
- Off-street parking (reserved, paved, striped)



**ALEC BLACKWELL, SIOR**  
 Director  
 +1 816 412 0242  
 alec.blackwell@cushwake.com

4600 Madison Avenue, Suite 800 | Kansas City, MO 64112  
 Main +1 816 221 2200  
 cushmanwakefield.com

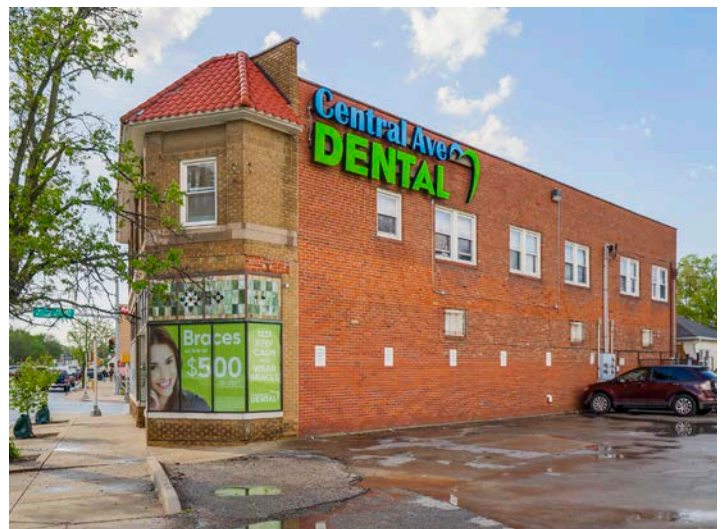
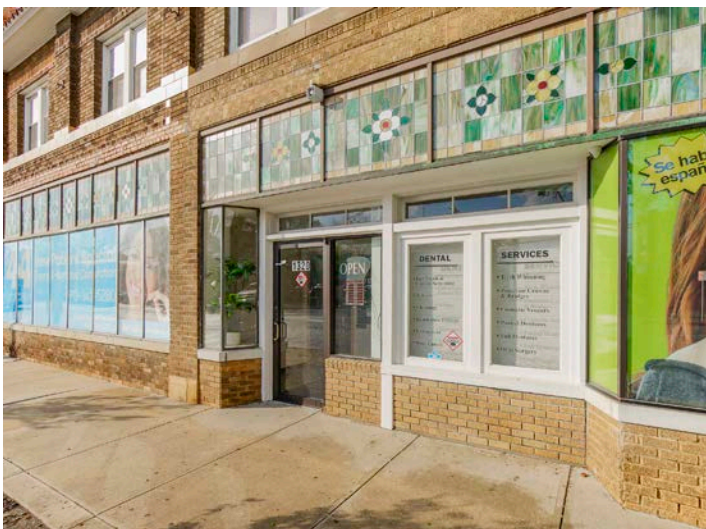
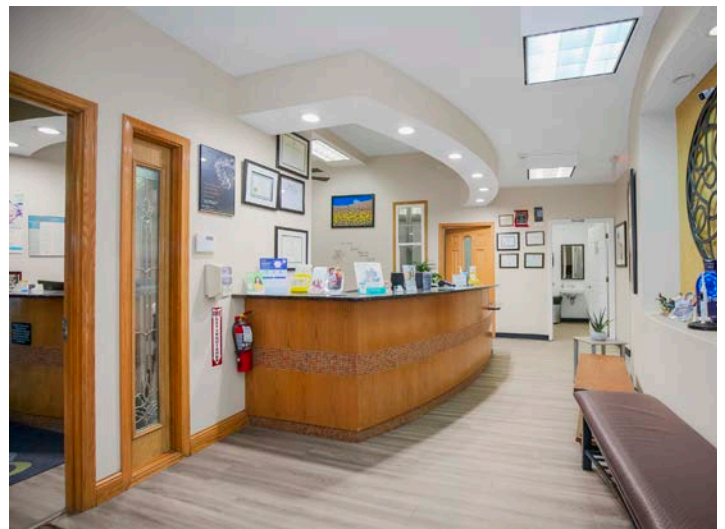
©2026 Cushman & Wakefield. All rights reserved. The information contained in this communication is strictly confidential. This information has been obtained from sources believed to be reliable but has not been verified. No warranty or representation, express or implied, is made as to the condition of the property (or properties) referenced herein or as to the accuracy or completeness of the information contained herein, and same is submitted subject to errors, omissions, change of price, rental or other conditions, withdrawal without notice, and to any special listing conditions imposed by the property owner(s). Any projections, opinions or estimates are subject to uncertainty and do not signify current or future property performance.

# 1 N 14TH STREET & 1320 CENTRAL AVE

Kansas City, KS 66102



## PHOTOS (ADDITIONAL PHOTO GALLERY AVAILABLE)



**ALEC BLACKWELL, SIOR**  
Director  
+1 816 412 0242  
alec.blackwell@cushwake.com

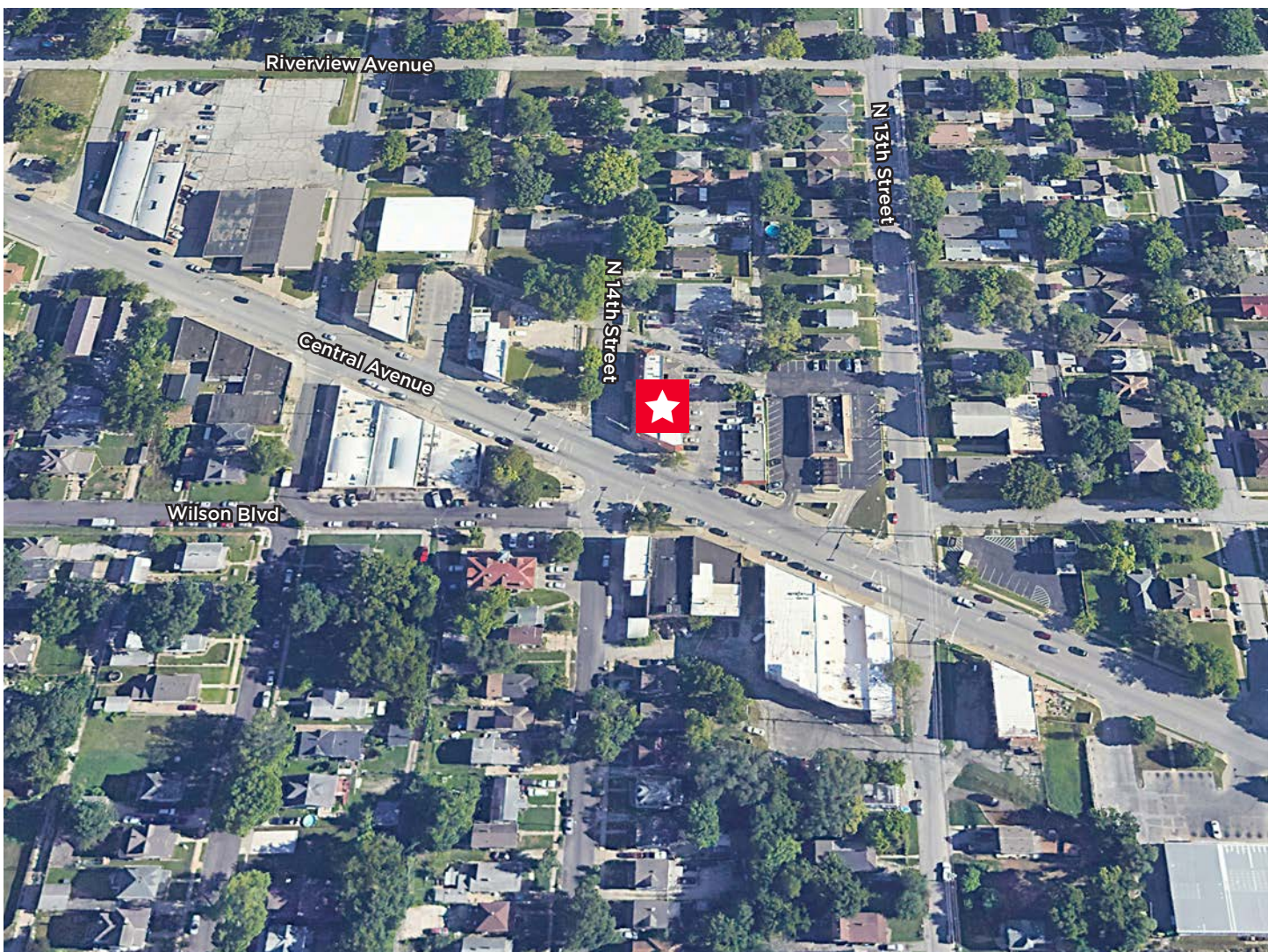
4600 Madison Avenue, Suite 800  
Kansas City, MO 64112  
Main +1 816 221 2200  
[cushmanwakefield.com](http://cushmanwakefield.com)

# 1 N 14TH STREET & 1320 CENTRAL AVE

Kansas City, KS 66102



## AERIAL



### ALEC BLACKWELL, SIOR

Director

+1 816 412 0242

[alec.blackwell@cushwake.com](mailto:alec.blackwell@cushwake.com)

4600 Madison Avenue, Suite 800

Kansas City, MO 64112

Main +1 816 221 2200

[cushmanwakefield.com](http://cushmanwakefield.com)