

FOR SALE

10,000 SF MULTI-TENANT INDUSTRIAL FACILITY

5826 - 5830 CORPORATION CIRCLE, FORT MYERS, FL 33905

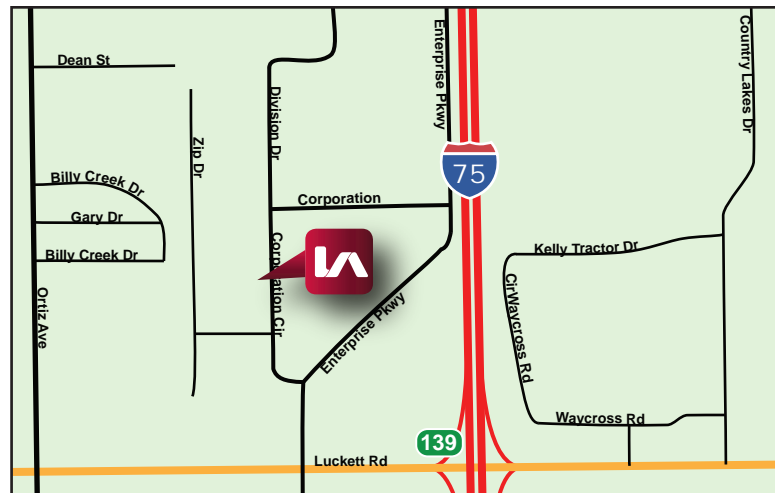
Interior & Exterior Completely Remodeled!



- **BUILDING SIZE:** 10,000 SF
- **LAND SIZE:** 0.94± AC
- **ASKING PRICE:** \$2,200,000

PROPERTY FEATURES

- 10,000 SF Industrial Warehouse Building
- Ability for Three (3) Separate Meters for Multi-Tenant Use
- Four (4) Grade-Level Doors
- 18' Clear Height
- New Roof in 2023
- All Brand New HVAC Units
- Owner Can Occupy Entire Building or Lease the Available Units for Monthly Income!
- Zoned IL (Light Industrial)



**ZONING ALLOWS FOR
AUTOMOBILE REPAIR & SERVICE**
(click here for a list of all permitted uses)

Please Contact:

Gary Barlow
Senior Vice President
📞 239.877.4980
✉ gbarlow@lee-associates.com

Brock Rasmussen
Principal
📞 239.209.0458
✉ brasmussen@lee-associates.com

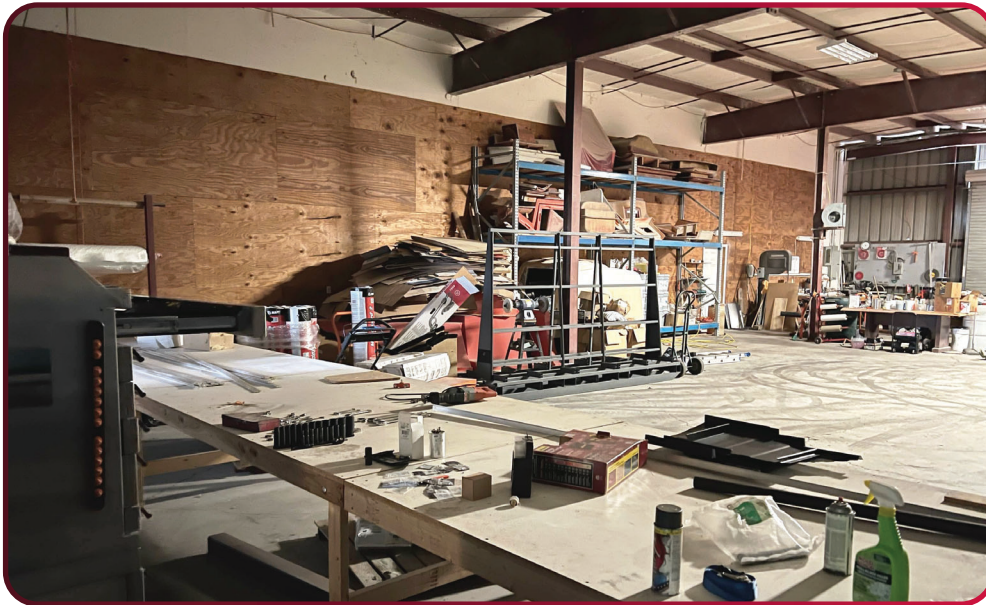
All information furnished regarding property for sale, rental or financing is from sources deemed reliable, but no warranty or representation is made to the accuracy thereof and same is subject to errors, omissions, change of price, or other conditions prior to sale, lease or financing or withdrawal without notice. No liability of any kind is to be imposed on the broker herein.

FOR SALE

10,000 SF MULTI-TENANT INDUSTRIAL FACILITY

5826 - 5830 CORPORATION CIRCLE, FORT MYERS, FL 33905

LEE & ASSOCIATES
COMMERCIAL REAL ESTATE SERVICES



YOUR LOCAL MARKET **EXPERT**

9979 Gulf Logistics Drive, Suite 210 | Fort Myers, Florida 33913 | Lee-FL.com



FOR SALE

10,000 SF MULTI-TENANT INDUSTRIAL FACILITY

5826 - 5830 CORPORATION CIRCLE, FORT MYERS, FL 33905

LEE & ASSOCIATES
COMMERCIAL REAL ESTATE SERVICES



YOUR LOCAL MARKET **EXPERT**

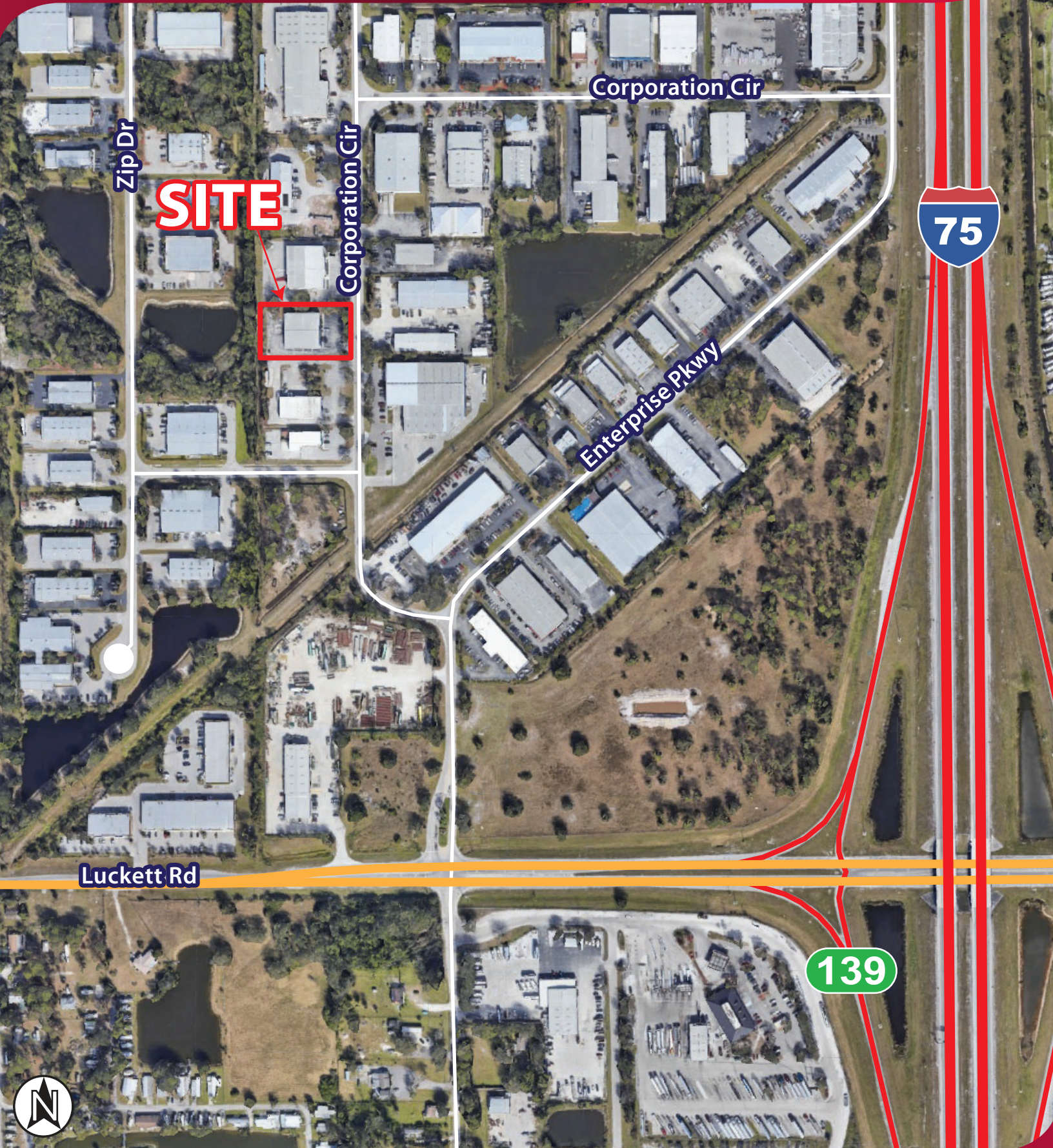
7400 Trail Boulevard, Suite 101 | Naples, Florida 34108 | Lee-FL.com

X Instagram LinkedIn Facebook

FOR SALE

10,000 SF MULTI-TENANT INDUSTRIAL FACILITY

5826 - 5830 CORPORATION CIRCLE, FORT MYERS, FL 33905



YOUR LOCAL MARKET **EXPERT**

7400 Trail Boulevard, Suite 101 | Naples, Florida 34108 | Lee-FL.com