

For Lease
10,000 SF Industrial Space with 18' Clear Ceiling

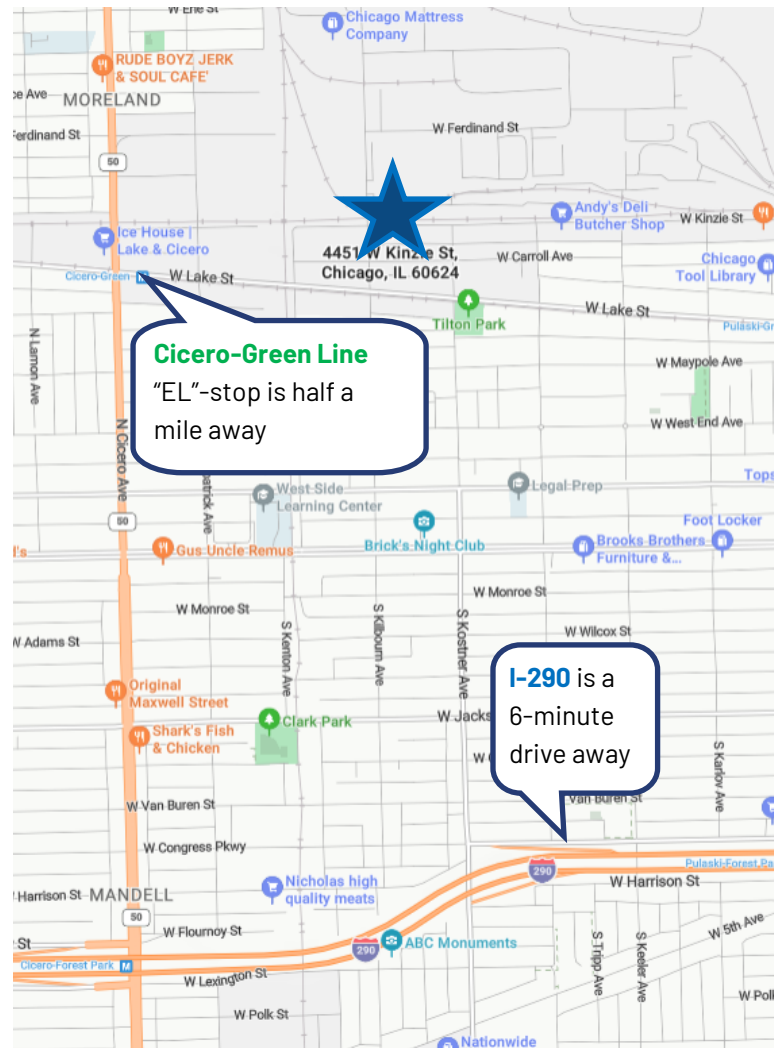
4451 W. Kinzie St.
Chicago, IL 60624



10,000 SF industrial space for lease with 3 drive-in doors and 18' clear ceiling height. Three phase heavy power. Located in West Garfield Park, with quick access to Cicero Avenue, Lake Street and only 6 minutes to I-290.

DETAILS

LEASE PRICE: \$12.00 PSF
LEASE TYPE: Modified Gross
SIZE: 10,000 SF
ZONING: PMD-9
DRIVE-IN DOORS: 3
CEILING HEIGHT: 18' Clear
POWER: Three Phase Heavy



CONTACT

Adam Schneiderman, SIOR
773 736 3600 Office
847 826 4467 Mobile
adam@straussrealty.com

David Kaplan
773 736 3600 Office
630 294 8689 Mobile
david@straussrealty.com

STRAUSS
REALTY, LTD.

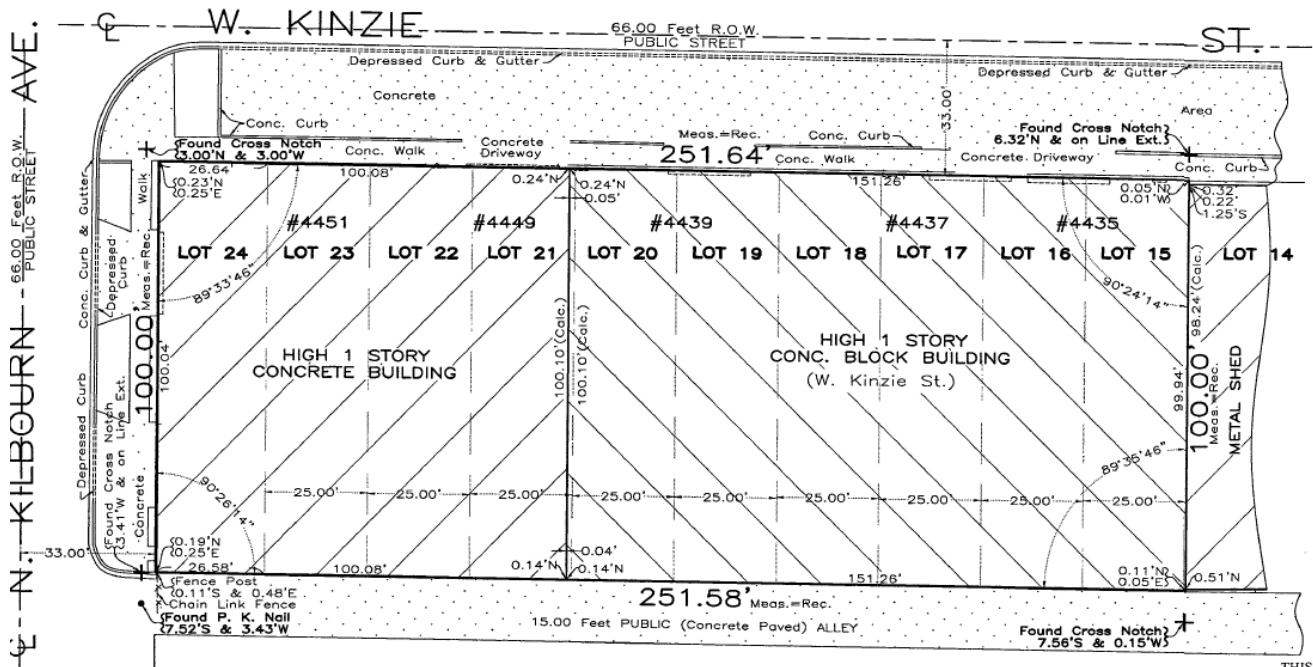
PLAT OF SURVEY

OF

LOTS 15 TO 24, BOTH INCLUSIVE, IN RESUBDIVISION OF BLOCK 5 IN WEST CHICAGO LAND COMPANY'S SUBDIVISION OF THE SOUTH 1/2 OF SECTION 10, TOWNSHIP 39 NORTH, RANGE 13, EAST OF THE THIRD PRINCIPAL MERIDIAN, IN COOK COUNTY, ILLINOIS.

TOTAL NET AREA: 25,160.41 SQ.FT. = 0.5776 ACRES

COMMONLY KNOWN AS: 4435-4451 WEST KINZIE STREET, CHICAGO, ILLINOIS.



THIS PROFESSION
ILLINOIS MINIMU
THIS SURVEY HAS

CONTACT

Adam Schneiderman, SIOR
773 736 3600 Office
847 826 4467 Mobile
adam@straussrealty.com

David Kaplan
773 736 3600 Office
630 294 8689 Mobile
david@straussrealty.com

