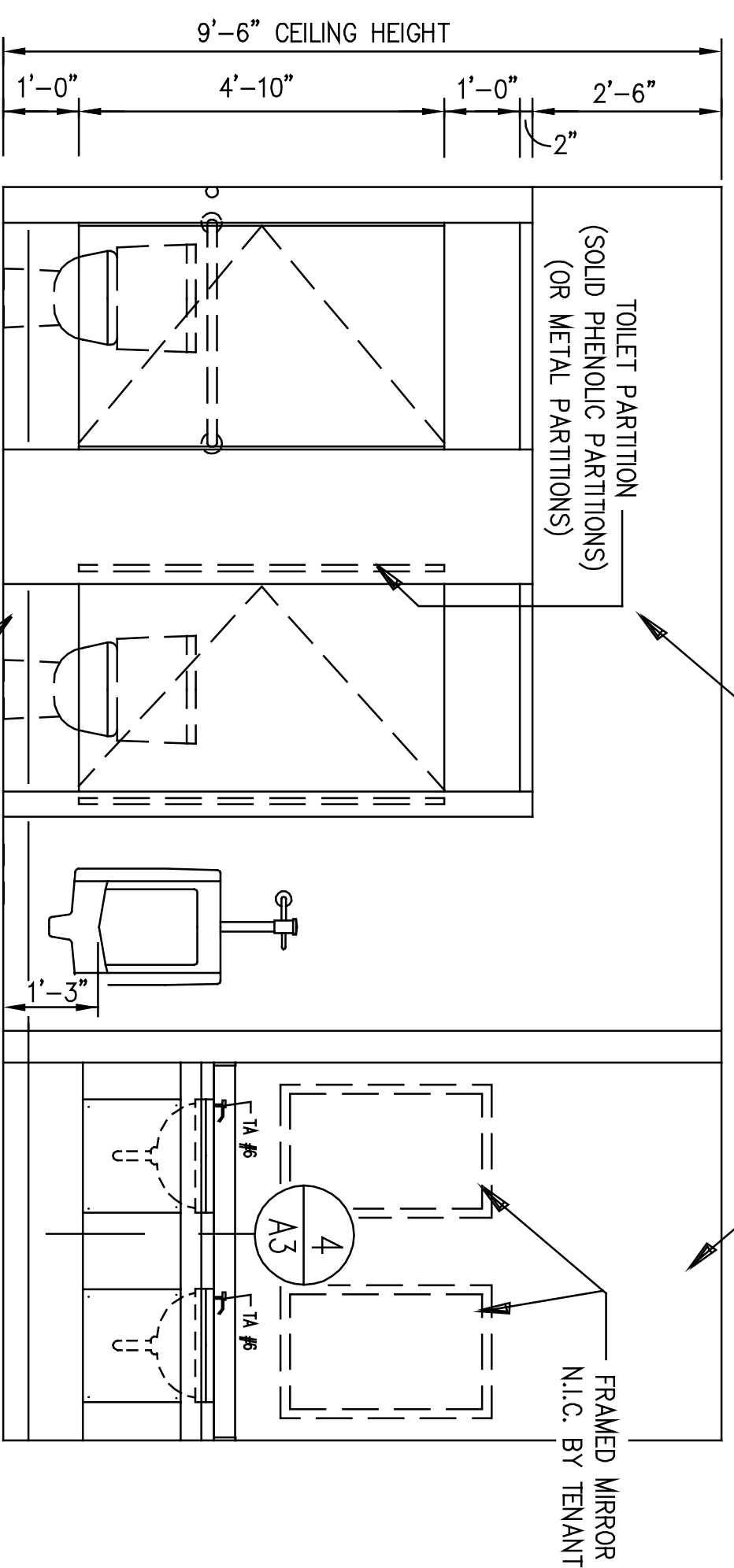
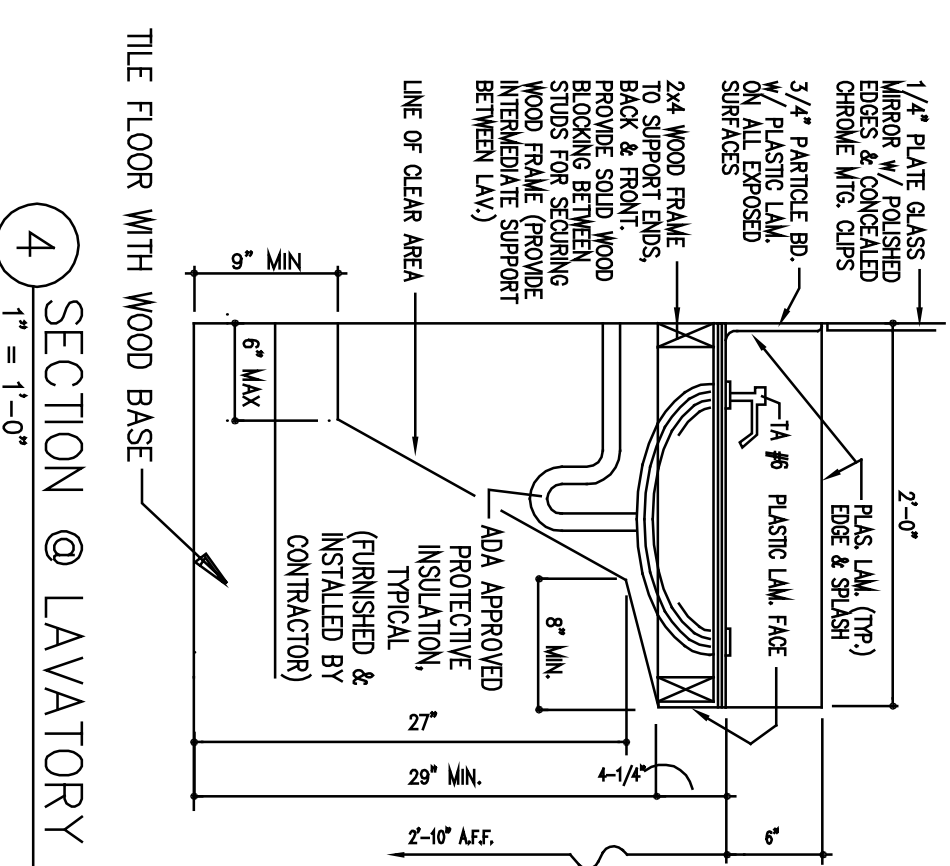


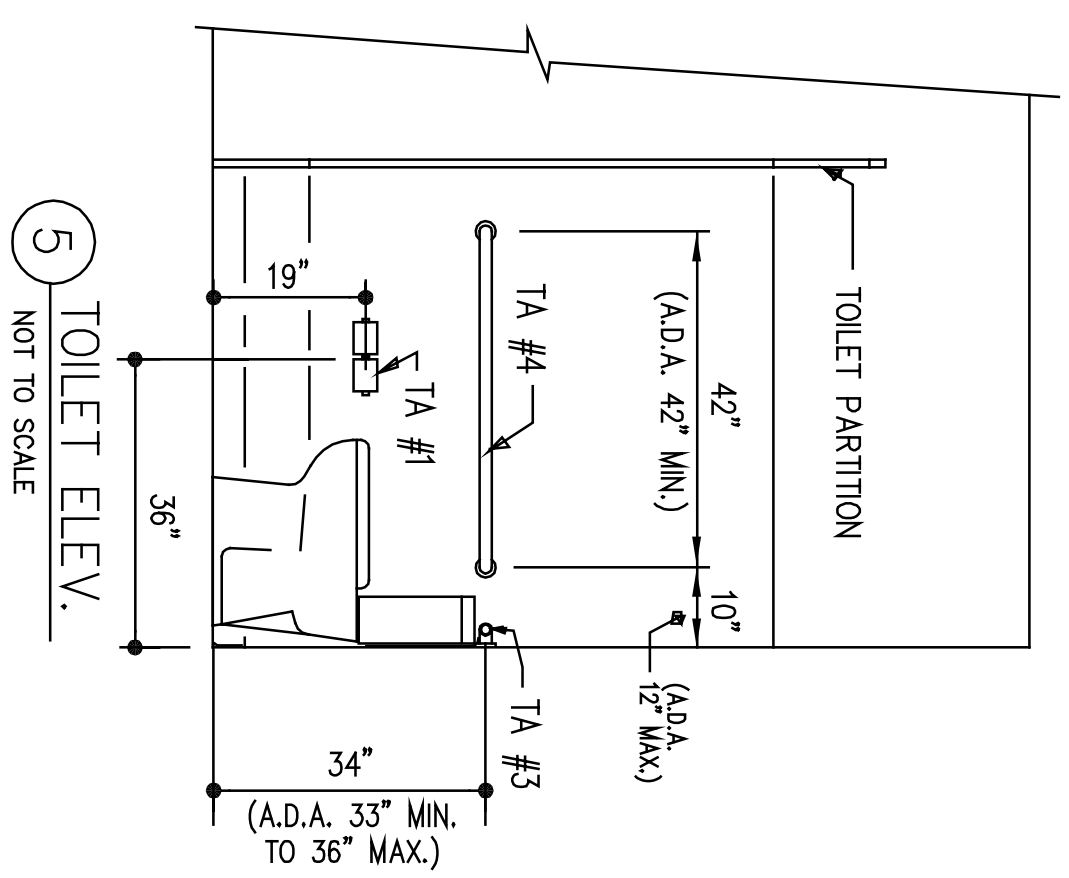
2 WOMEN TOILET ELEV.  
NOT TO SCALE



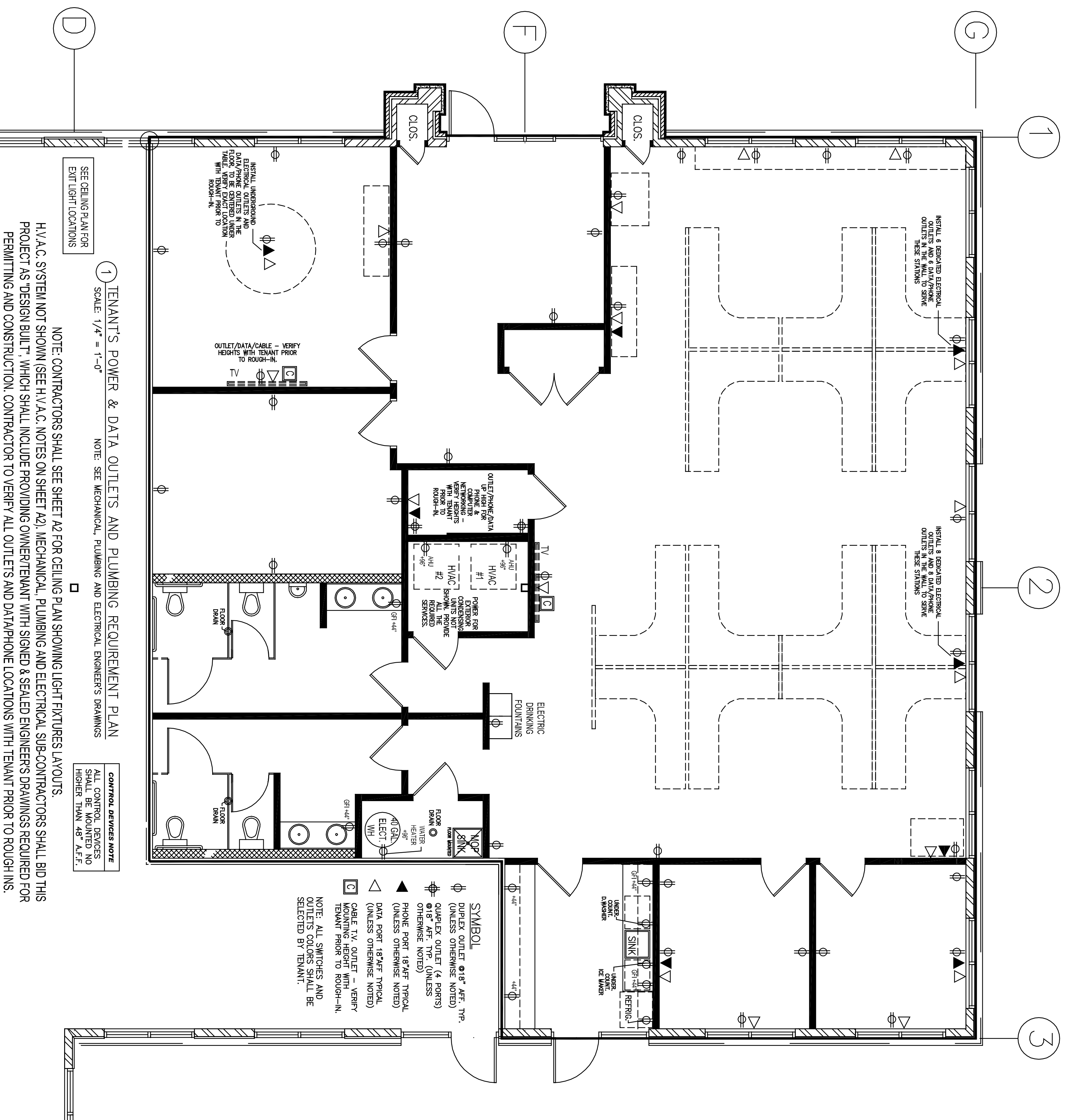
3 MEN TOILET ELEV.  
NOT TO SCALE



4 SECTION @ LAVATORY  
1" = 1'-0"



5 TOILET ELEV.  
NOT TO SCALE



**SYMBOL**

- ⊕ BURIED OUTLET @ 18\"/>

**CONTROL DEVICES NOTE**  
ALL CONTROL DEVICES SHALL BE MOUNTED NO HIGHER THAN 48\"/>

NOTE: CONTRACTORS SHALL SEE SHEET A2 FOR CEILING PLAN SHOWING LIGHT FIXTURES LAYOUTS.

H.V.A.C. SYSTEM NOT SHOWN (SEE H.V.A.C. NOTES ON SHEET A2). MECHANICAL, PLUMBING AND ELECTRICAL SUB-CONTRACTORS SHALL BID THIS PROJECT AS DESIGN BUILT, WHICH SHALL INCLUDE PROVIDING OWNER/TENANT WITH SIGNED & SEALED ENGINEERS DRAWINGS REQUIRED FOR PERMITTING AND CONSTRUCTION. CONTRACTOR TO VERIFY ALL OUTLETS AND DATA/PHONE LOCATIONS WITH TENANT PRIOR TO ROUGH INS.

1 TENANT'S POWER & DATA OUTLETS AND PLUMBING REQUIREMENT PLAN  
SCALE: 1/4" = 1'-0"  
NOTE: SEE MECHANICAL, PLUMBING AND ELECTRICAL ENGINEERS DRAWINGS

SEE CEILING PLAN FOR EXIT LIGHT LOCATIONS

INSTALL UNDERGROUND ELECTRICAL OUTLETS AND DATA/PHONE OUTLETS TO BE COVERED UNDER FLOOR WITH TENANT PRIOR TO ROUGH-IN.

VERIFY HEATS WITH TENANT PRIOR TO ROUGH-IN.

OUTLET DATA/CABLE - VERIFY HEATS WITH TENANT PRIOR TO ROUGH-IN.

POWER FOR EXTERIOR CONDENSATION PANS - VERIFY HEATS WITH TENANT PRIOR TO ROUGH-IN.

H.V.A.C. #1 - VERIFY HEATS WITH TENANT PRIOR TO ROUGH-IN.

H.V.A.C. #2 - VERIFY HEATS WITH TENANT PRIOR TO ROUGH-IN.

COMPUTER & PHONE - VERIFY HEATS WITH TENANT PRIOR TO ROUGH-IN.

OUTLET/PHONE/DATA - VERIFY HEATS WITH TENANT PRIOR TO ROUGH-IN.

POWER FOR EXTERIOR CONDENSATION PANS - VERIFY HEATS WITH TENANT PRIOR TO ROUGH-IN.

H.V.A.C. #1 - VERIFY HEATS WITH TENANT PRIOR TO ROUGH-IN.

H.V.A.C. #2 - VERIFY HEATS WITH TENANT PRIOR TO ROUGH-IN.

COMPUTER & PHONE - VERIFY HEATS WITH TENANT PRIOR TO ROUGH-IN.

OUTLET/PHONE/DATA - VERIFY HEATS WITH TENANT PRIOR TO ROUGH-IN.

POWER FOR EXTERIOR CONDENSATION PANS - VERIFY HEATS WITH TENANT PRIOR TO ROUGH-IN.

H.V.A.C. #1 - VERIFY HEATS WITH TENANT PRIOR TO ROUGH-IN.

H.V.A.C. #2 - VERIFY HEATS WITH TENANT PRIOR TO ROUGH-IN.

COMPUTER & PHONE - VERIFY HEATS WITH TENANT PRIOR TO ROUGH-IN.

OUTLET/PHONE/DATA - VERIFY HEATS WITH TENANT PRIOR TO ROUGH-IN.

POWER FOR EXTERIOR CONDENSATION PANS - VERIFY HEATS WITH TENANT PRIOR TO ROUGH-IN.

H.V.A.C. #1 - VERIFY HEATS WITH TENANT PRIOR TO ROUGH-IN.

H.V.A.C. #2 - VERIFY HEATS WITH TENANT PRIOR TO ROUGH-IN.

COMPUTER & PHONE - VERIFY HEATS WITH TENANT PRIOR TO ROUGH-IN.

OUTLET/PHONE/DATA - VERIFY HEATS WITH TENANT PRIOR TO ROUGH-IN.

POWER FOR EXTERIOR CONDENSATION PANS - VERIFY HEATS WITH TENANT PRIOR TO ROUGH-IN.

H.V.A.C. #1 - VERIFY HEATS WITH TENANT PRIOR TO ROUGH-IN.

H.V.A.C. #2 - VERIFY HEATS WITH TENANT PRIOR TO ROUGH-IN.

COMPUTER & PHONE - VERIFY HEATS WITH TENANT PRIOR TO ROUGH-IN.

OUTLET/PHONE/DATA - VERIFY HEATS WITH TENANT PRIOR TO ROUGH-IN.

POWER FOR EXTERIOR CONDENSATION PANS - VERIFY HEATS WITH TENANT PRIOR TO ROUGH-IN.

H.V.A.C. #1 - VERIFY HEATS WITH TENANT PRIOR TO ROUGH-IN.

H.V.A.C. #2 - VERIFY HEATS WITH TENANT PRIOR TO ROUGH-IN.

COMPUTER & PHONE - VERIFY HEATS WITH TENANT PRIOR TO ROUGH-IN.

OUTLET/PHONE/DATA - VERIFY HEATS WITH TENANT PRIOR TO ROUGH-IN.

- TA #1 TOILET PAPER DISPENSER BRADLEY - MODEL 5224
- TA #2 PAPER TOWEL DISPENSER/DISPOSAL BRADLEY - MODEL 234
- TA #3 36" GRAB BAR BOBRICK - SERIES B-6206 x36"
- TA #4 42" GRAB BAR BOBRICK - SERIES B-6206 x42"
- TA #6 SOAP DISPENSER - OVER SINK

NOTE: PROVIDE SOLID WOOD BLOCKING IN WALLS FOR HANDRAILS, FIXTURES, ETC...

6 TOILET ACCESSORIES

tenant finish-out for

**M6 CAPITAL GROUP**

9047 Poplar Avenue, Suite 109  
Germantown, TN 38138

STONE CREEK CENTER

STONEMASTER LANDSCAPE ARCHITECTS, LLC.  
PH: 515-681-1000

sheet title:

**MPE REQUIREMENTS DWG. & DETAILS**

**ARCHITECTWON INTERNATIONAL, LLC.**

9035 Garden Arbor Dr., Germantown, TN, 38138, USA  
phone: 901-340-3979 ~ email: info@architectwon.com  
date: 07.27.2012  
revisions:

sheet: **A3**

