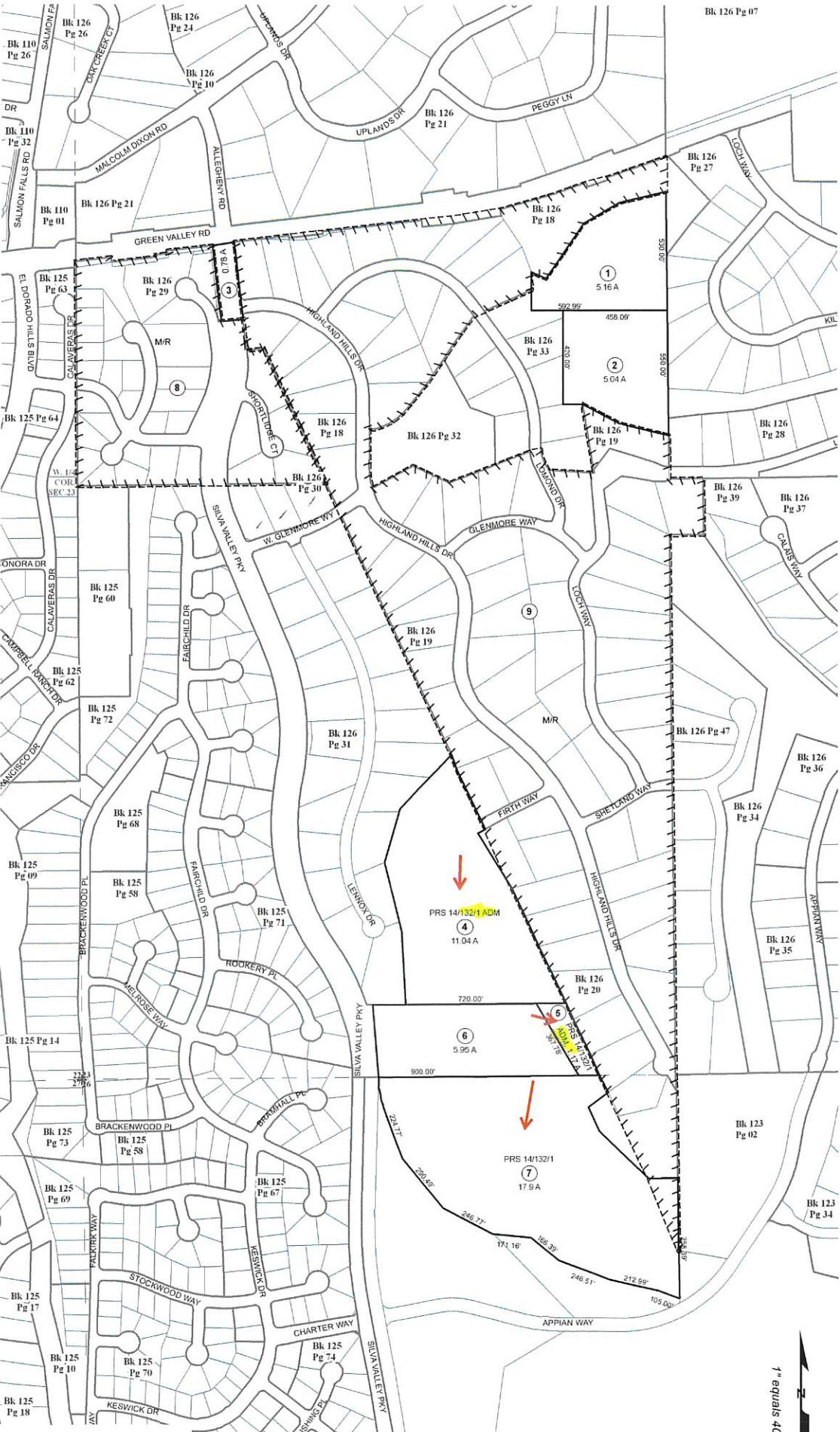


POR. SECS. 23 & 26, T.10N., R.8E., M.D.M.

126:22

1" equals 400'



Acreages Are Estimates

THIS MAP IS NOT A SURVEY. It is prepared by the El Dorado Co Assessor's office for assessment purposes only. Area calculations are based on unobstructed ground. Users should verify items and dimensions and acreages.

Adjacent Maps: Page 126, Sheet 10, Grid 22; Assessor's Block Numbers Shown in Ellipses; Assessor's Parcel Numbers Shown in Circles.

Rev. July 12, 2006

Assessor's Map Bk. 126, Pg. 22
County of El Dorado, CA