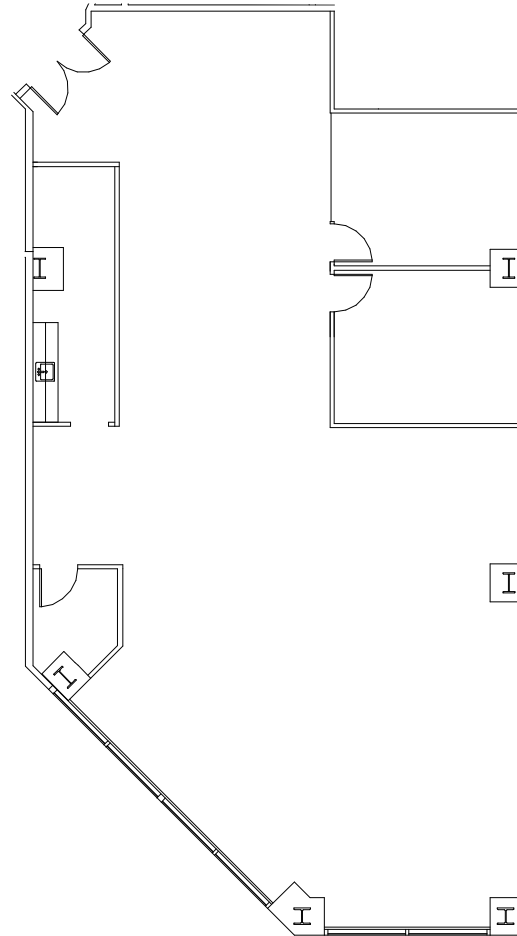
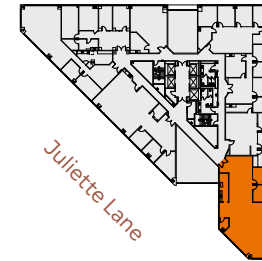
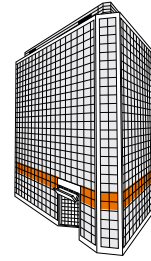


SUITE 390

±3,416 SF | AVAILABLE NOW

- 1 Conference Room
- 1 Private Office
- Break Area
- Telco/Storage Room
- Open Area For Desks
- Market Ready



MISSION
CITY CENTER

SEAN TOOMEY

+1 408 219 8858
sean.toomey@jll.com
RE Lic#: 01350215

MARYJANE BENGIVENO

+1 408 856 5622
maryjane.bengiveno@jll.com
RE Lic#: 0220114

TOSS VALLENTINE

+1 650 213 2172
toss.valentine@jll.com
RE Lic#: 01742629

