

WESTON MEADOWS

Hume, California - Tulare County

Located in the heart of Kings and Sequoia National Parks.

The terrain is steep to gently sloping with a beautiful meadow and stream flowing through the property at an elevation of 7,000 feet.

After the first snow, winter access is possible by snowmobile located at Quail Flat on Generals Highway. Superb recreation area for cross-country skiing, horse back riding, fly fishing for trout.

**These parcels are zoned A1 Agricultural as per Tulare County Zoning.
Could be potential site for resort hotel and 65 sites for home development.**

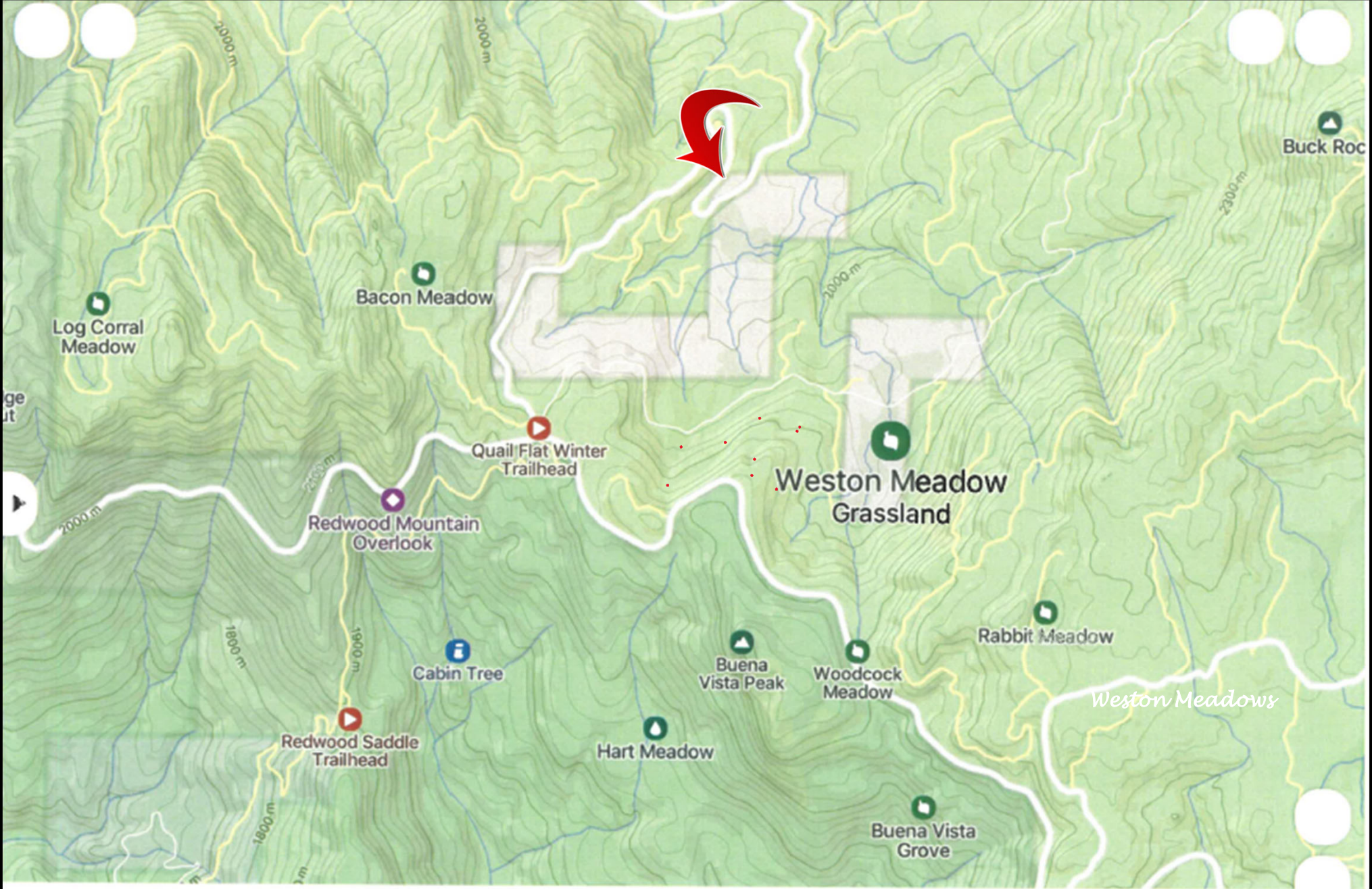
NO WARRANTY OR REPRESENTATION, EXPRESS OR IMPLIED, IS MADE AS TO THE ACCURACY OF THE INFORMATION CONTAINED HEREIN, AND THE SAME IS SUBMITTED SUBJECT TO ERRORS, OMISSIONS, CHANGE OF PRICE, RENTAL OR OTHER CONDITIONS, PRIOR SALE, LEASE OR FINANCING, OR WITHDRAWAL WITHOUT NOTICE, AND OF ANY SPECIAL LISTING CONDITIONS IMPOSED BY OUR PRINCIPALS NO WARRANTIES OR REPRESENTATIONS ARE MADE AS TO THE CONDITION OF THE PROPERTY OR ANY HAZARDS CONTAINED THEREIN ARE ANY TO BE IMPLIED.

For more information:



Bill Whitlatch
GRI, RE Masters™, CCIM
Broker, DRE Lic. #00874715

559-679-6611 • bill@whitlatch.net
525 West Center Avenue Suite D
Visalia, California 93277
+1 559-679-6611
whitlatchre.com



*Field
&
Stream*



*300 plus acres with stunning scenery and waterfalls
And stream.*

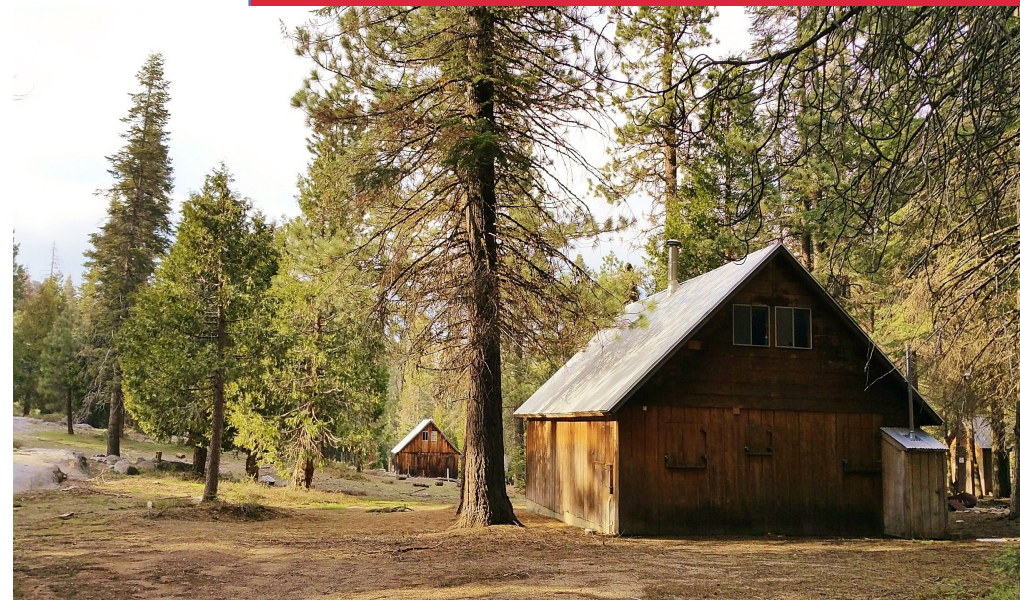
*Fenced & gated contiguous parcels with entry
access from Hume Lake Road.*

Bill Whitlatch, GRI, RE Masters™, CCIM
Broker, DRE Lic. #00874715
559-679-6611 • bill@whitlatch.net



Serene Meadows

Weston Meadows Hume, California – Tulare County



Weston Meadow has four furnished cabins including utilities; propane gas, electric, water, and septic systems. After the first snow, winter access is possible by snowmobile located at Quail Flat on Generals Highway. A recreation area for cross-country skiing, horse back riding, and fly fishing for trout.



Bill Whitlatch, GRI, RE Masters™, CCIM
Broker, DRE Lic. #00874715
559-679-6611 • bill@whitlatch.net

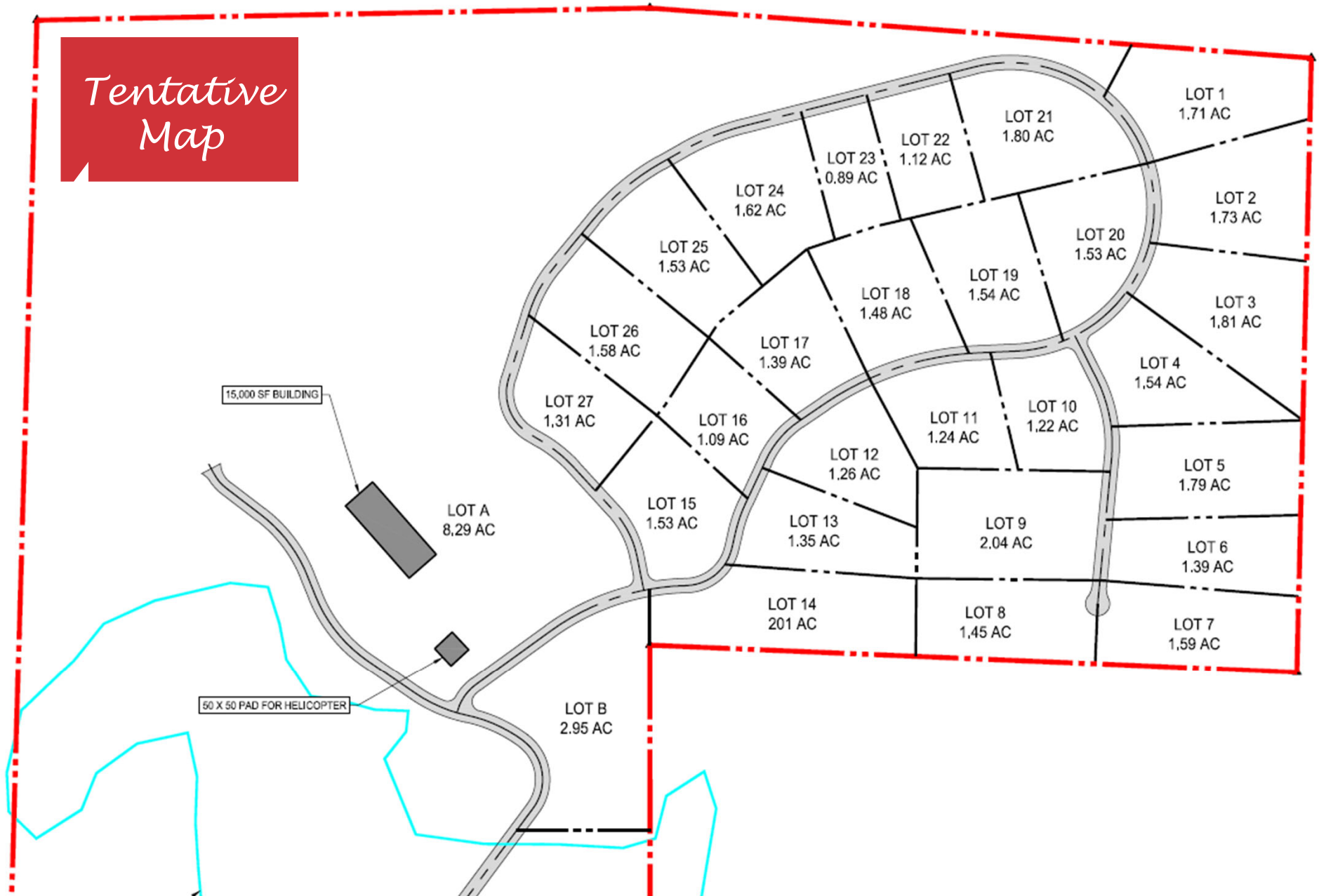


Weston Meadows

Hume, California – Tulare County

whitlatchre.com

Tentative Map



Weston Meadows

Hume, California

Tulare County

King Canyon
National Park 3 Miles

Sequoia National
Park 11.6 Miles

Hume Lake 9.2 Miles

Shaver Lake 86.5 Miles

Yosemite National
Park 119 Miles

Mono Hot Springs 126 Miles

Squaw Valley 28.4 Miles



The Whitlatch Group

Bill Whitlatch, GRI, RE Masters™, CCIM

DRE Lic. #00874715

Weston Meadows

Hume, California – Tulare County

+1 559 679 6611

whitlatchre.com



Regional Cities

Distance
from Weston Meadows

Modesto	161.0 Miles
Merced	122.0 Miles
Madera	89.1 Miles
Redding	397.0 Miles
San Francisco	253.0 Miles
Sacramento	237.0 Miles
San Luis Obispo	204.0 Miles
Southern CA	255.0 Miles
Seattle, WA	988.0 Miles
Portland, OR	814.0 Miles

Central San Juaquin Valley Distance

from Weston Meadows

Pinehurst	15.2 Miles
Woodlake	43.3 Miles
Three Rivers	49.8 Miles
Exeter	50.7 Miles
Visalia	60.6 Miles
Fresno	60.7 Miles
Bakersfield	138.0 Miles

Airport

Fresno Yosemite International Airport	56.8 Miles
--	------------

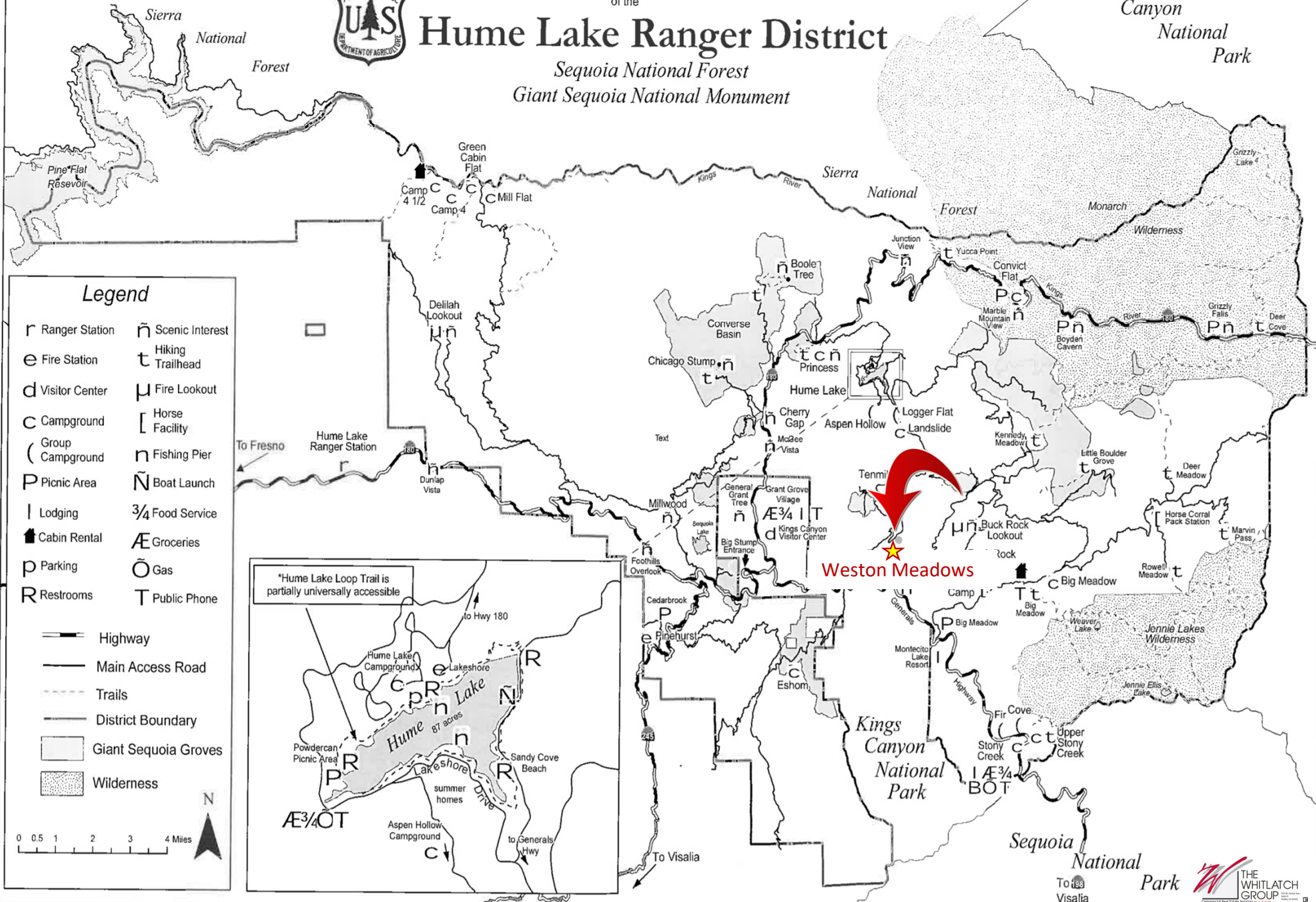


Recreation Map of the

Hume Lake Ranger District

Sequoia National Forest
Giant Sequoia National Monument

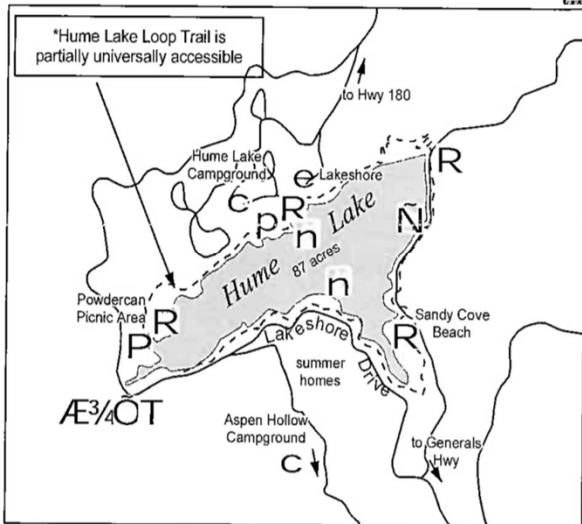
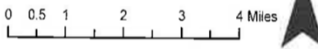
Kings Canyon National Park



Legend

- r Ranger Station
- e Fire Station
- d Visitor Center
- C Campground
- (Group Campground
- P Picnic Area
- | Lodging
- 🏠 Cabin Rental
- p Parking
- R Restrooms
- ñ Scenic Interest
- t Hiking Trailhead
- μ Fire Lookout
- [Horse Facility
- n Fishing Pier
- Ñ Boat Launch
- ¾ Food Service
- Æ Groceries
- ⊖ Gas
- T Public Phone

- Highway
- Main Access Road
- - - Trails
- District Boundary
- Giant Sequoia Groves
- ▨ Wilderness



*Hume Lake Loop Trail is partially universally accessible

Weston Meadows

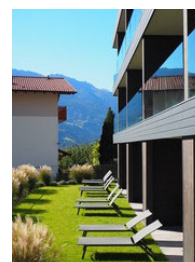
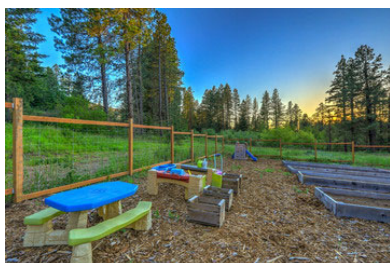




*“The big tree is Nature’s forest masterpiece...
the greatest of living things”.*

-John Muir

Build your dream resort.



Or pursue other endless opportunities above.

For more information:



*Weston Meadows
Hume, California
Tulare County*



Bill Whitlatch, GRI, RE Masters™, CCIM
Broker, DRE Lic. #00874715
559-679-6611 • bill@whitlatch.net

525 West Center Avenue Suite D
Visalia, California 93277
+1 559-679-6611
whitlatchre.com

NO WARRANTY OR REPRESENTATION, EXPRESS OR IMPLIED, IS MADE AS TO THE ACCURACY OF THE INFORMATION CONTAINED HEREIN, AND THE SAME IS SUBMITTED SUBJECT TO ERRORS, OMISSIONS, CHANGE OF PRICE, RENTAL OR OTHER CONDITIONS, PRIOR SALE, LEASE OR FINANCING, OR WITHDRAWAL WITHOUT NOTICE, AND OF ANY SPECIAL LISTING CONDITIONS IMPOSED BY OUR PRINCIPALS NO WARRANTIES OR REPRESENTATIONS ARE MADE AS TO THE CONDITION OF THE PROPERTY OR ANY HAZARDS CONTAINED THEREIN ARE ANY TO BE IMPLIED.

Property Features:

- Located between Sequoia & Kings Canyon National Parks.
- Where adventure awaits minutes away from various activities: Day hiking, Back packing, Watching wildlife, Rock climbing, Horseback riding, Crystal Cave, Dark Sky Festival, and more.

More information at:
whitlatchre.com

