



INVESTMENTS REALTY

OFFICE

Offices Space Available in Palmetto Bay (Kendall Submarket)

9780 E Indigo St, Palmetto Bay, FL 33157

## **HIGHLIGHTS**

Charming office building conveniently located in the heart of Palmetto Bay with easy access to major highways, public transportation, and a variety of dining and shopping options.

---

- Fully built out offices available..
- Convenient access to S Dixie Hwy (one block away) and Florida Turnpike.
- No need to fight traffic to Downtown or Brickell.
- Onsite Parking
- 1,080 SF office available

Lease Rate - \$34/SF (mg)

Offices Space Available in the heart of Palmetto Bay

LOUIS MCMILLAN | VP  
Commercial

[louis@glirealty.com](mailto:louis@glirealty.com)

O. 305.635.3005  
C. 305.496.8400

## Property Overview

Property Type:	Office
Building Height:	3 Stories
Building Class:	B
Parking:	25 Surface Parking Spaces 10 Covered Parking Spaces
Year Built:	2006
Building Size:	15,558 SF
Typical Floor Size:	5,186 SF



**Offices Space Available in the  
heart of Palmetto Bay**

**LOUIS MCMILLAN | VP  
Commercial**

**[louis@glirealty.com](mailto:louis@glirealty.com)**

**O. 305.635.3005  
C. 305.496.8400**

Procuring broker shall only be entitled to a commission, calculated in accordance with the rates approved by the principal only if such procuring broker executes a brokerage agreement acceptable to us and our principal and the conditions as set forth in the brokerage agreement are fully and unconditionally satisfied. Although all information furnished regarding property for sale, rental, or financing is from sources deemed reliable, such information has not been verified and no express representation is made nor is any to be implied as to the accuracy thereof and it is submitted subject to errors, omissions, change of price, rental or other conditions, prior sale, lease or financing, or withdrawal without notice and to any special conditions imposed by our principal.

## Spaces Available

Unit #204    1,080 SF  
Rent        \$2,782 / month  
Parking:    2 Surface Parking  
               Spaces



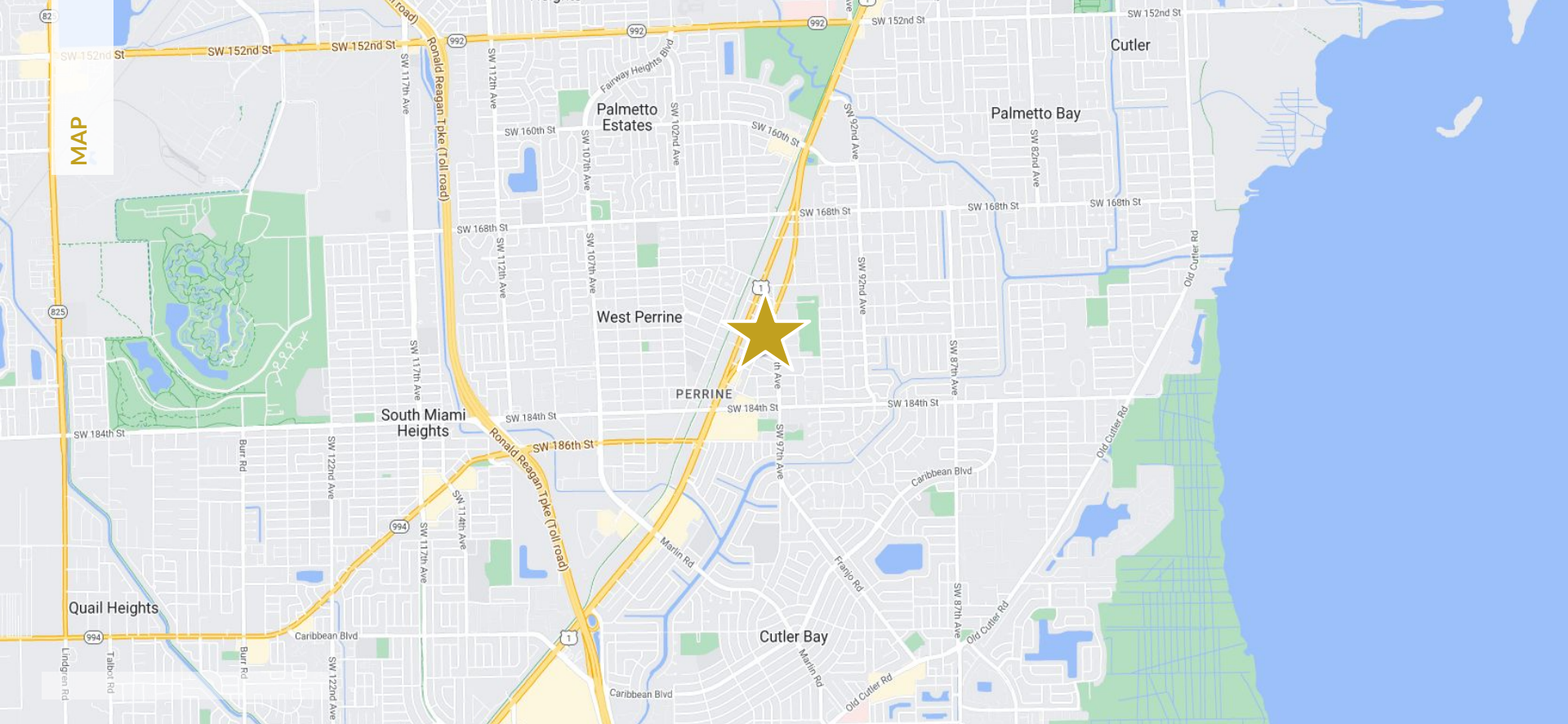
**Offices Space Available in the  
heart of Palmetto Bay**

**LOUIS MCMILLAN | VP  
Commercial**

**[louis@glirealty.com](mailto:louis@glirealty.com)**

**O. 305.635.3005  
C. 305.496.8400**

Procuring broker shall only be entitled to a commission, calculated in accordance with the rates approved by the principal only if such procuring broker executes a brokerage agreement acceptable to us and our principal and the conditions as set forth in the brokerage agreement are fully and unconditionally satisfied. Although all information furnished regarding property for sale, rental, or financing is from sources deemed reliable, such information has not been verified and no express representation is made nor is any to be implied as to the accuracy thereof and it is submitted subject to errors, omissions, change of price, rental or other conditions, prior sale, lease or financing, or withdrawal without notice and to any special conditions imposed by our principal.



MAP

STREET VIEW

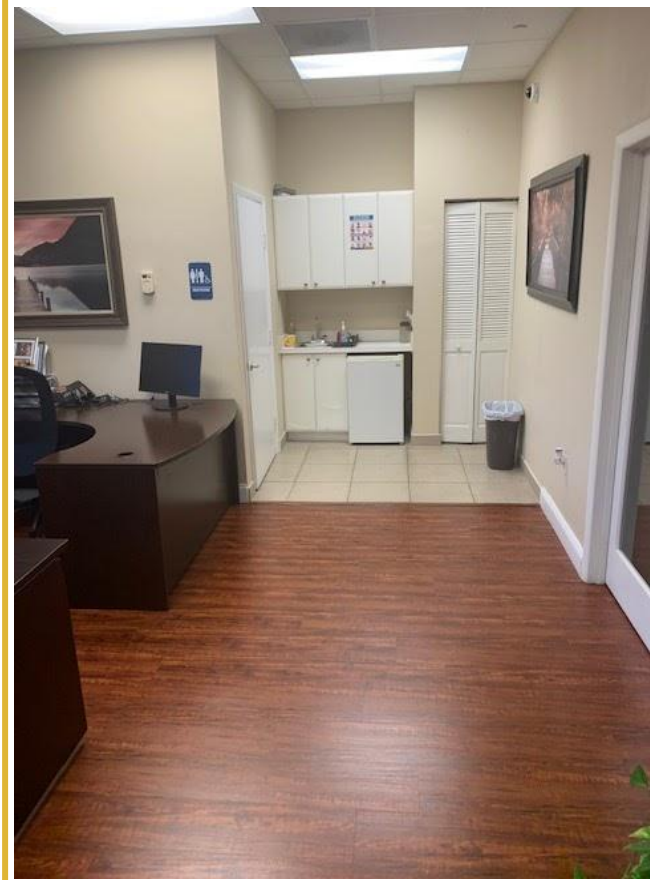


STREET VIEW



STREET VIEW







Unit 204





**Offices Space Available in the  
heart of Palmetto Bay**

**LOUIS MCMILLAN | VP  
Commercial**

**[louis@glirealty.com](mailto:louis@glirealty.com)**

**O. 305.635.3005  
C. 305.496.8400**

Procuring broker shall only be entitled to a commission, calculated in accordance with the rates approved by our principal only if such procuring broker executes a brokerage agreement acceptable to us and our principal and the conditions as set forth in the brokerage agreement are fully and unconditionally satisfied. Although all information furnished regarding property for sale, rental, or financing is from sources deemed reliable, such information has not been verified and no express representation is made nor is any to be implied as to the accuracy thereof and it is submitted subject to errors, omissions, change of price, rental or other conditions, prior sale, lease or financing, or withdrawal without notice and to any special conditions imposed by our principal.