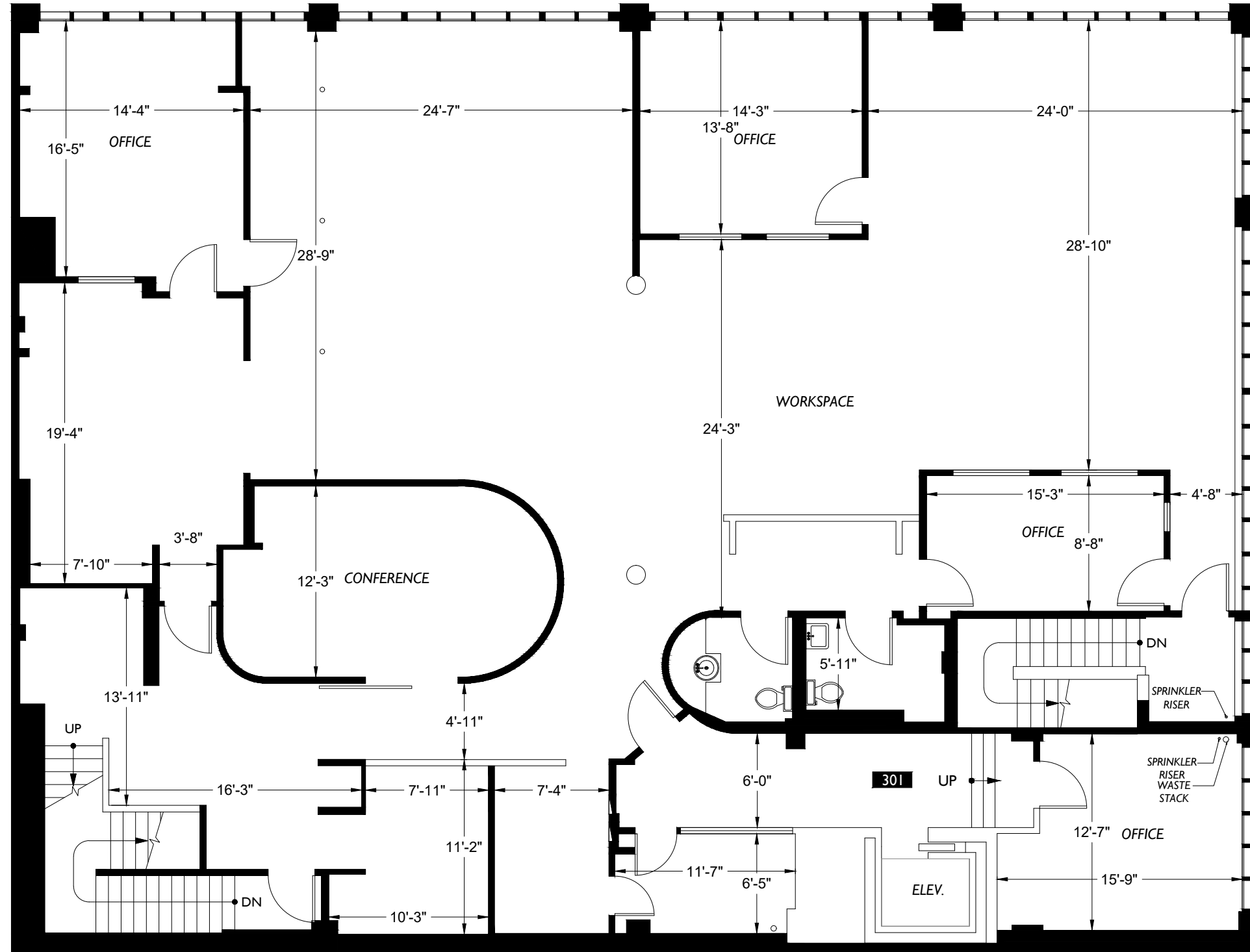


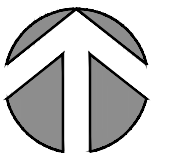
East Pine Street

Parking



Adjacent Building

11th Avenue



<p>Misha Averill/Legacy Commercial LLC 400-112th Avenue NE Suite 230 Bellevue, WA 98004</p>	<p>Office 1535 11th Avenue Seattle, WA 98122</p>	<p>Floor Plan 3 Floor</p>	<p>Scale 0 10</p>	<p>2DFLOORPLANS.COM 425-677-7511 600 NW Gilman Blvd. Suite E Issaquah, WA 98027 Measured: July 2020 Project: C20-627</p>
---	--	--	-----------------------	--