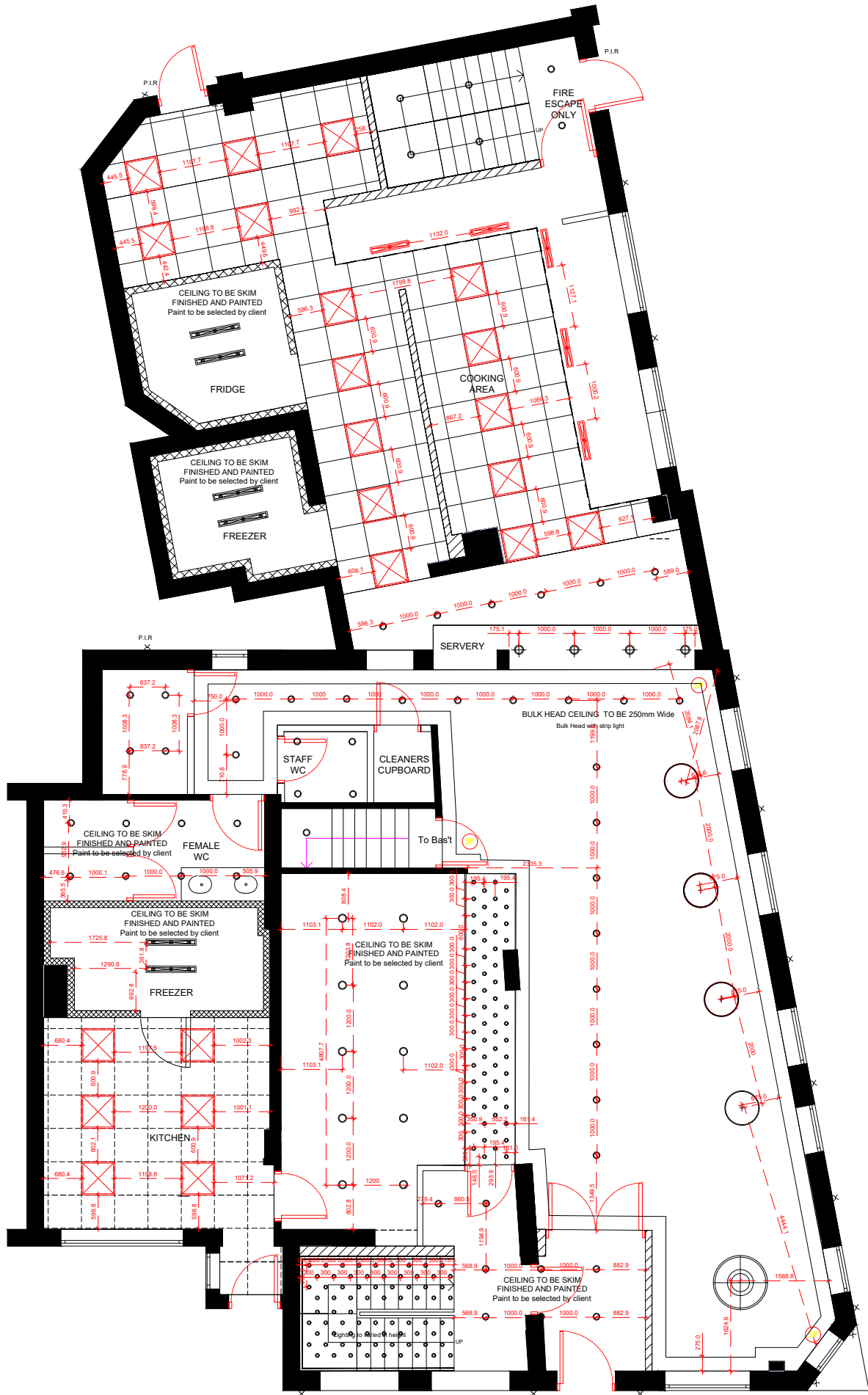
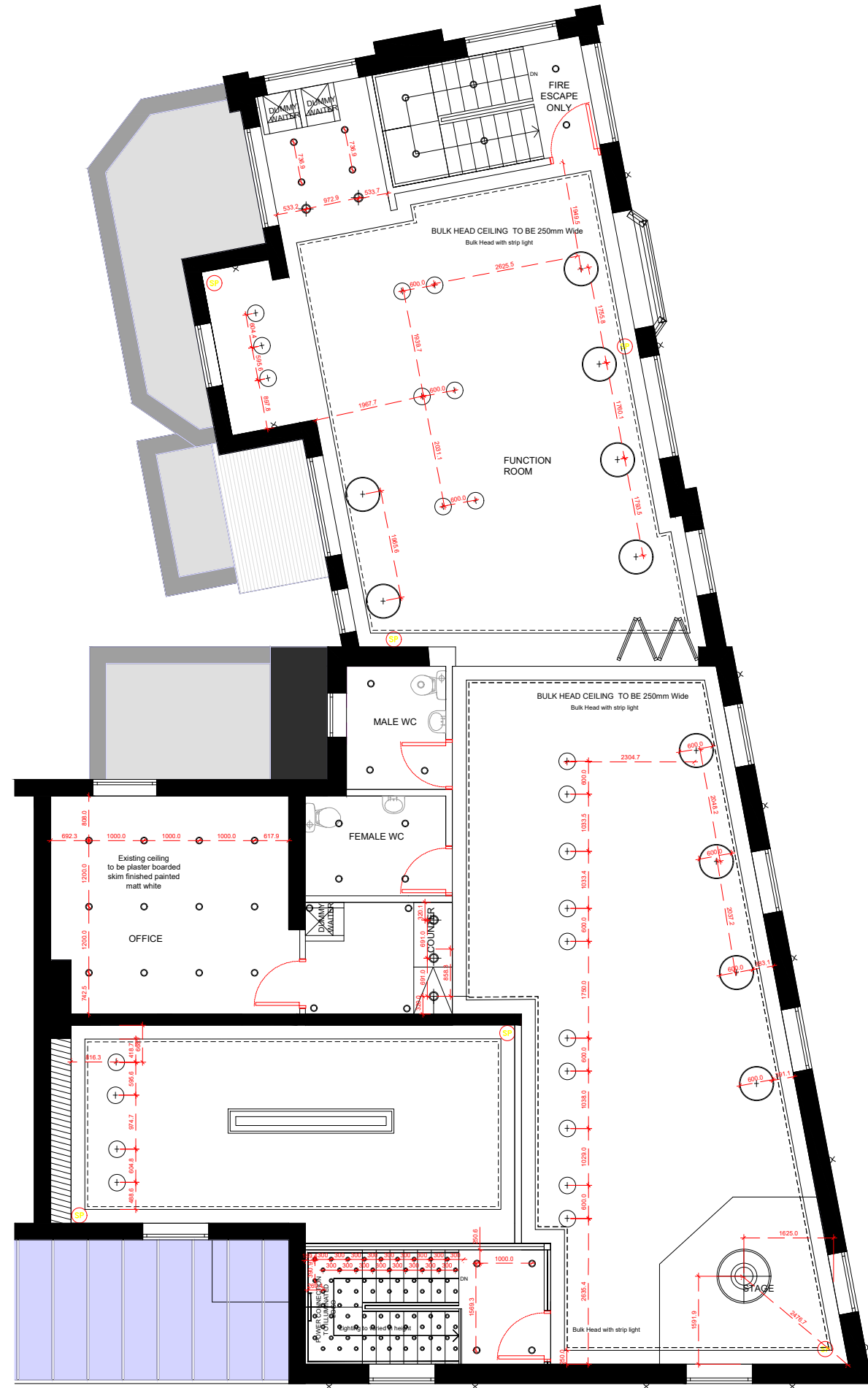




The contractor is responsible for checking dimensions, tolerances and references. Any discrepancy to be verified with the Architect before proceeding with the works. Where an item is covered by drawings to different scales the larger scale drawing is to be worked to. Do not scale drawing. Figured dimensions to be worked to in all cases.



PROPOSED GROUND FLOOR LIGHTING LAYOUT



PROPOSED FIRST FLOOR LIGHTING LAYOUT

- 1000mm LED Spotlight
- Turkish Lantern Hollowed-out Pendant Lighting Single-Bulb Metal Hanging Lamp in Bronze
- Drop pendant lights to clients specification.
- CANOPY BULKHEAD LIGHTS
- CONCEALED TUBE LIGHT FOR FRIDGE / FREEZER LIGHTS
- SPEAKERS - BLACK
- Lights to clients specification.
- Lights to clients specification.
- Crystal Lamp pendant lights to clients specification. Lighting to varied in height
- External Wall Lighting
- 600x1000 LED flat panel ceiling lights
- Bulk Head with strip light to clients specification.

Lights /A/C for indicative purpose only, contractor to confirm layout with client and franchiser

REV B - 08/03/2023
As requested by client
REV A - 01/12/2022
As requested by project manager

Drawing no. 8		
date	rev.	revision/author/checker
PURPOSE OF ISSUE CONSTRUCTION		
PROJECT 936 - 938 Stockport Road, Levenshulme, Manchester, M19 3NN		
DRAWING PROPOSED PLANS: LIGHTING LAYOUT		
JOB NO. 2022-165-008		REV B
DRAWN BY. AS	checked	
SCALE 1:100@A3	DATE: 08.03.2023	