



NOW LEASING - FLEXIBLE SIZE OPTIONS

# *132 Pierpont Avenue*

SALT LAKE CITY, UTAH

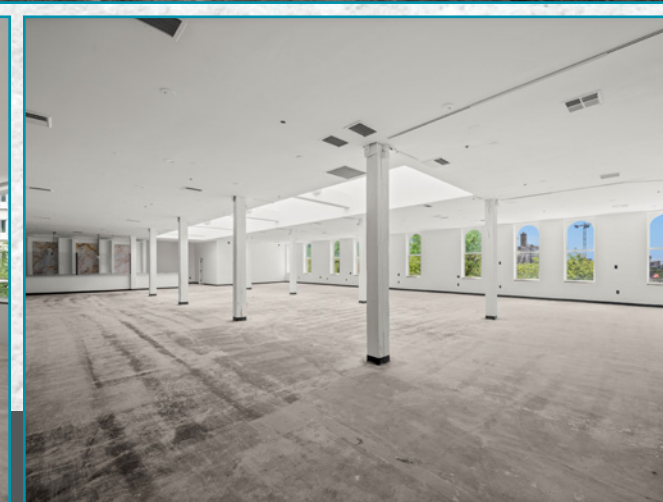
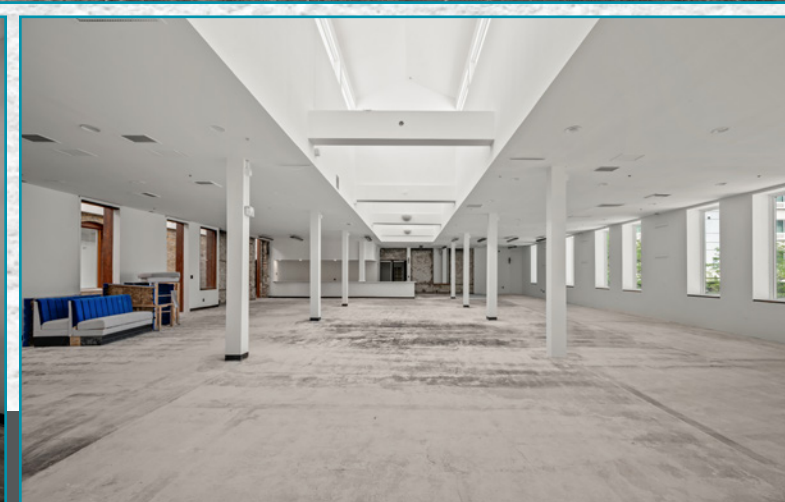
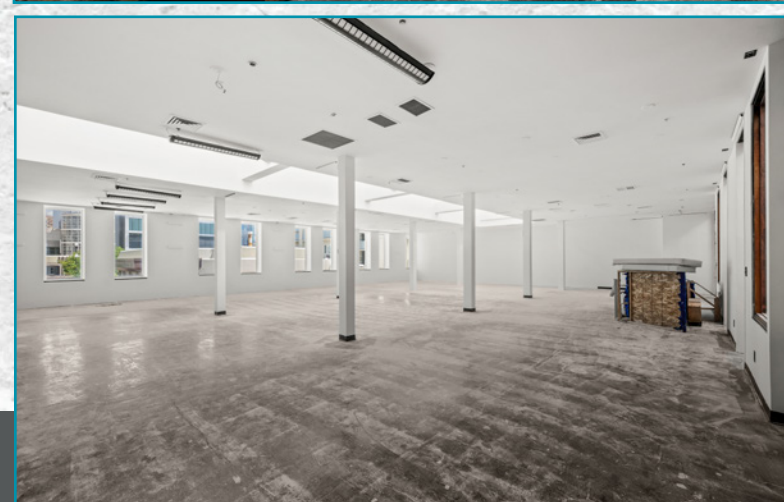


**CUSHMAN &  
WAKEFIELD**

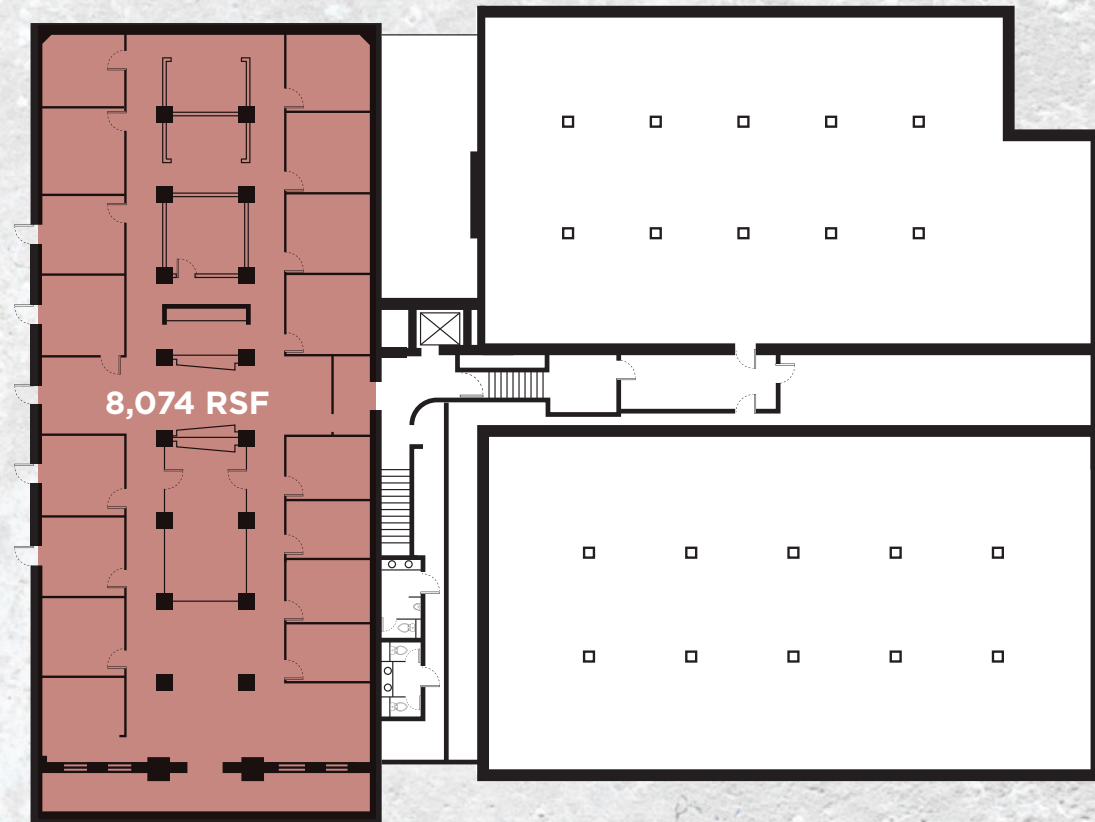
# PROPERTY HIGHLIGHTS

Character-rich architecture featuring exposed brick, high ceilings, abundant natural light, and historic design elements

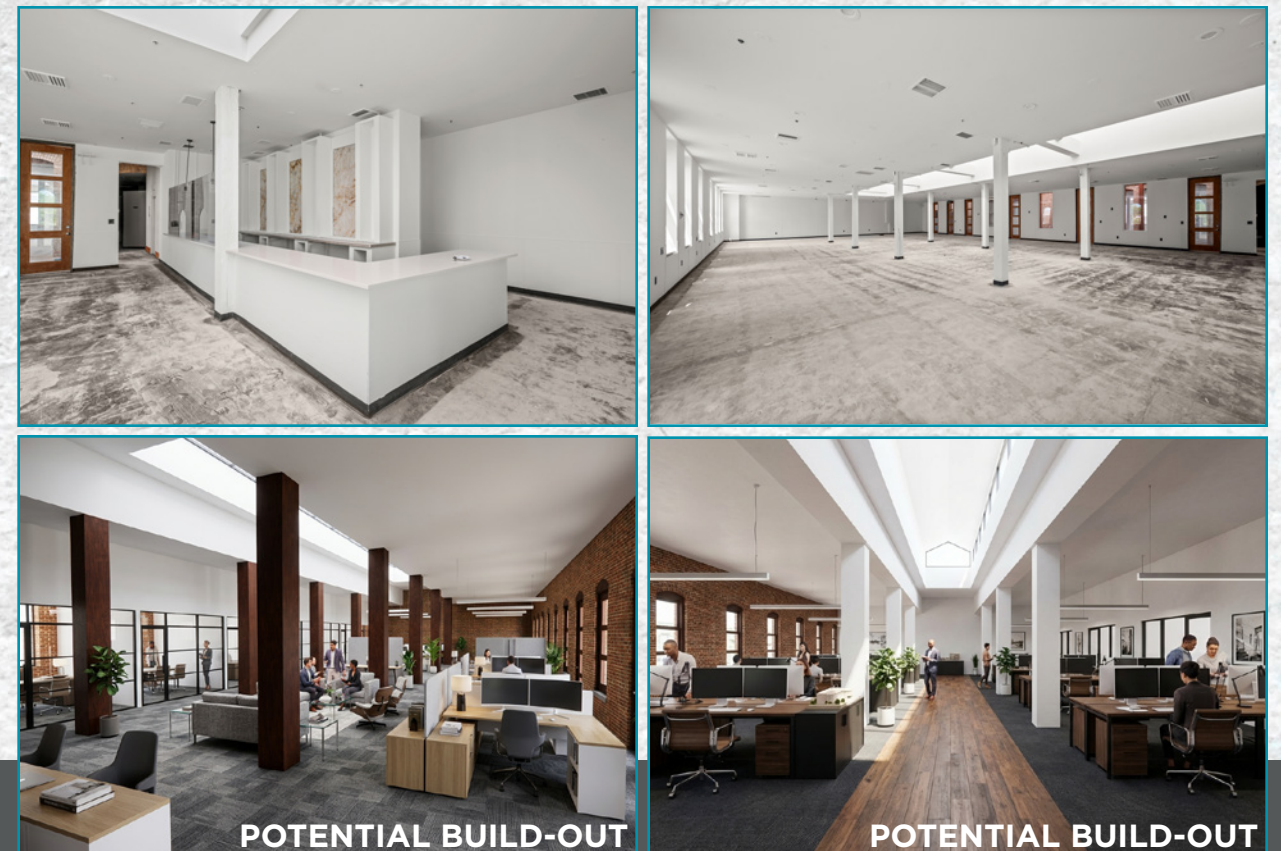
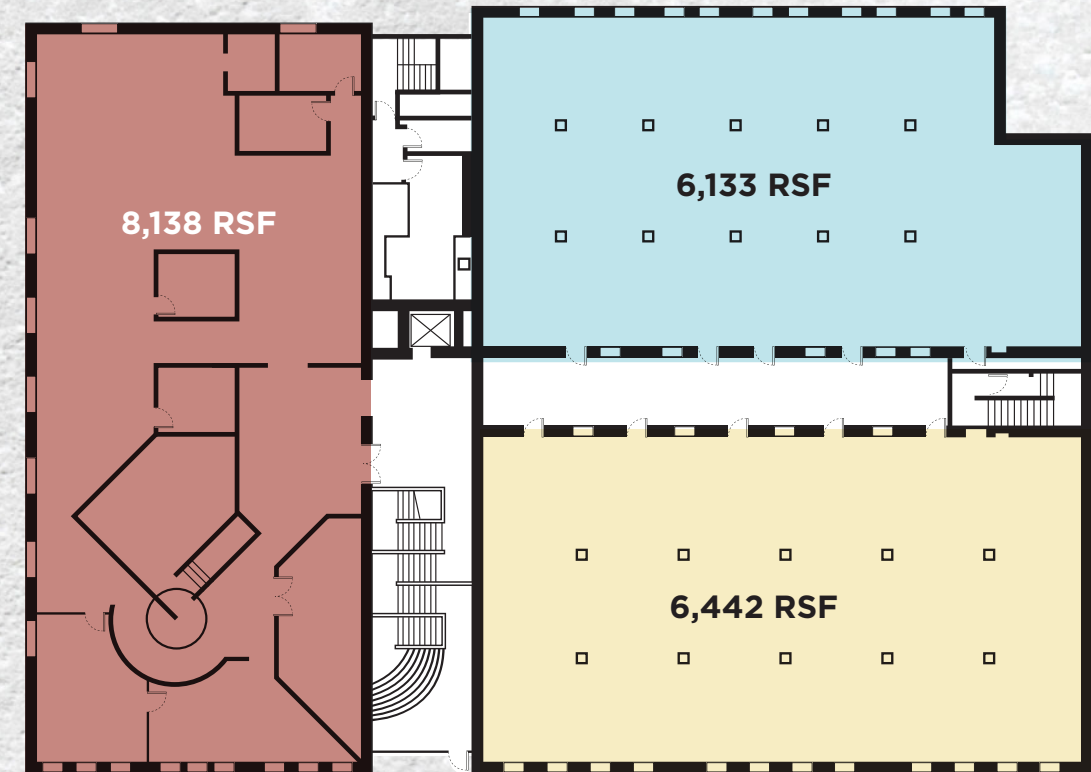
- Space ready for improvements
- Flexible size options
- Best in class on-site ownership
- Excellent downtown location in the heart of the CBD
- Highly walkable location with unmatched access to nearby amenities
- Distinguished historic asset
- Located within TRAX “free fare” designation zone
- 10-minute drive to SLC International Airport
- \$23.00 Per Rentable Square Foot, Full-Service Gross



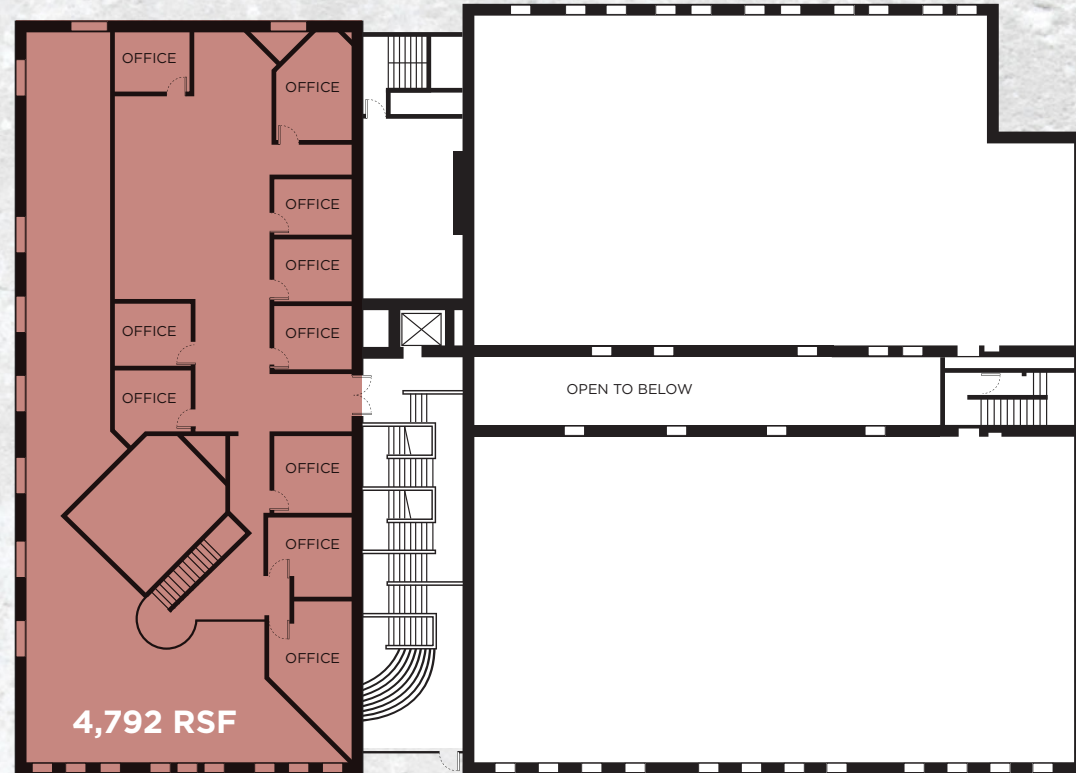
# GARDEN LEVEL | 8,074 RSF



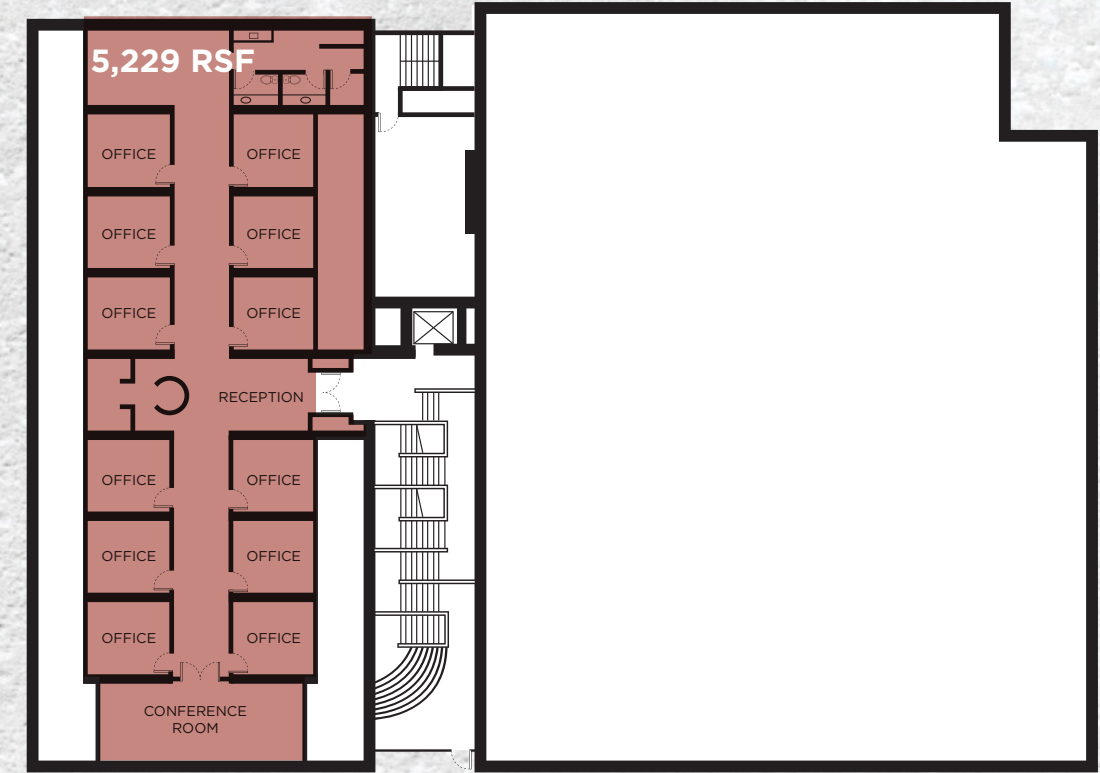
# SECOND FLOOR | 20,713 RSF



THIRD FLOOR | 4,792 RSF



FOURTH FLOOR | 5,229 RSF



# 132 PIERPONT AVENUE

## SALT LAKE CITY, UT



**CUSHMAN & WAKEFIELD**

FOR MORE INFORMATION, CONTACT:

**MELINA MIRAMONTES**

Director

801 303 5435

melina.miramontes@cushwake.com

**JESSE MANGUM**

Managing Director

801 303 5547

jesse.mangum@cushwake.com

170 South Main Street

Suite 1600

Salt Lake City, UT 84101

+1 801 322 2000

cushmanwakefield.com

©2026 Cushman & Wakefield. All rights reserved. The information contained in this communication is strictly confidential. This information has been obtained from sources believed to be reliable but has not been verified. NO WARRANTY OR REPRESENTATION, EXPRESS OR IMPLIED, IS MADE AS TO THE CONDITION OF THE PROPERTY (OR PROPERTIES) REFERENCED HEREIN OR AS TO THE ACCURACY OR COMPLETENESS OF THE INFORMATION CONTAINED HEREIN, AND SAME IS SUBMITTED SUBJECT TO ERRORS, OMISSIONS, CHANGE OF PRICE, RENTAL OR OTHER CONDITIONS, WITHDRAWAL WITHOUT NOTICE, AND TO ANY SPECIAL LISTING CONDITIONS IMPOSED BY THE PROPERTY OWNER(S). ANY PROJECTIONS, OPINIONS OR ESTIMATES ARE SUBJECT TO UNCERTAINTY AND DO NOT SIGNIFY CURRENT OR FUTURE PROPERTY PERFORMANCE.