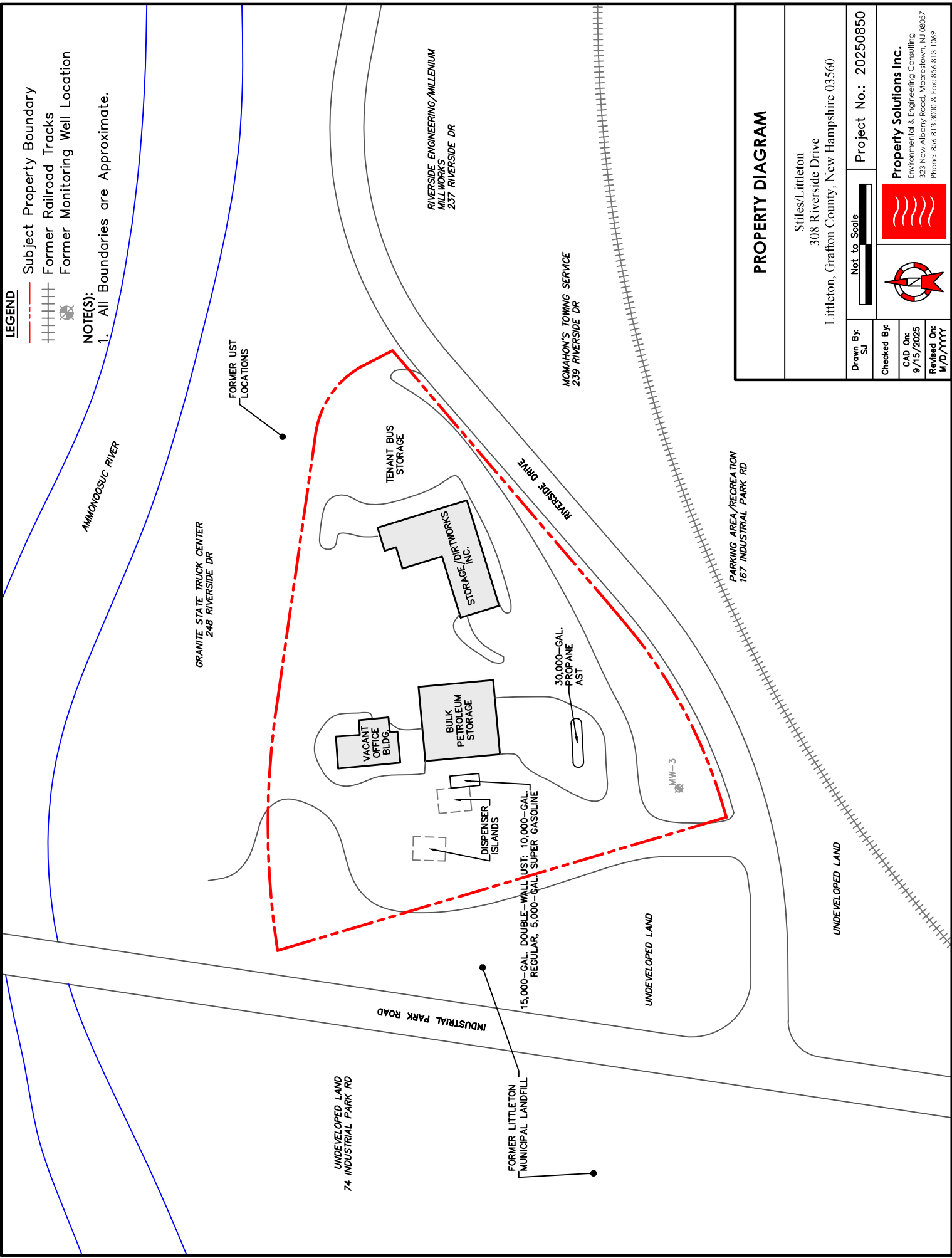


LEGEND

- Subject Property Boundary
- ++++ Former Railroad Tracks
- ⊗ Former Monitoring Well Location



NOTE(S):

1. All Boundaries are Approximate.



PROPERTY DIAGRAM

Stiles/Littleton
 308 Riverside Drive
 Littleton, Grafton County, New Hampshire 03560

Drawn By: SJ	Not to Scale	Project No.: 20250850
Checked By:		
CAD On: 9/15/2025		
Revised On: N/D/YYYY		
Property Solutions Inc. Environmental & Engineering Consulting 323 New Albany Road, Moorestown, NJ 08057 Phone: 856-813-3000 & Fax: 856-813-1069		