

OMNI BUSINESS PARK 7303 BURLESON RD.

SUITE O700 FLOOR PLAN

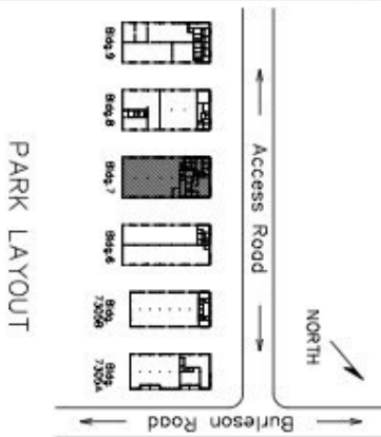
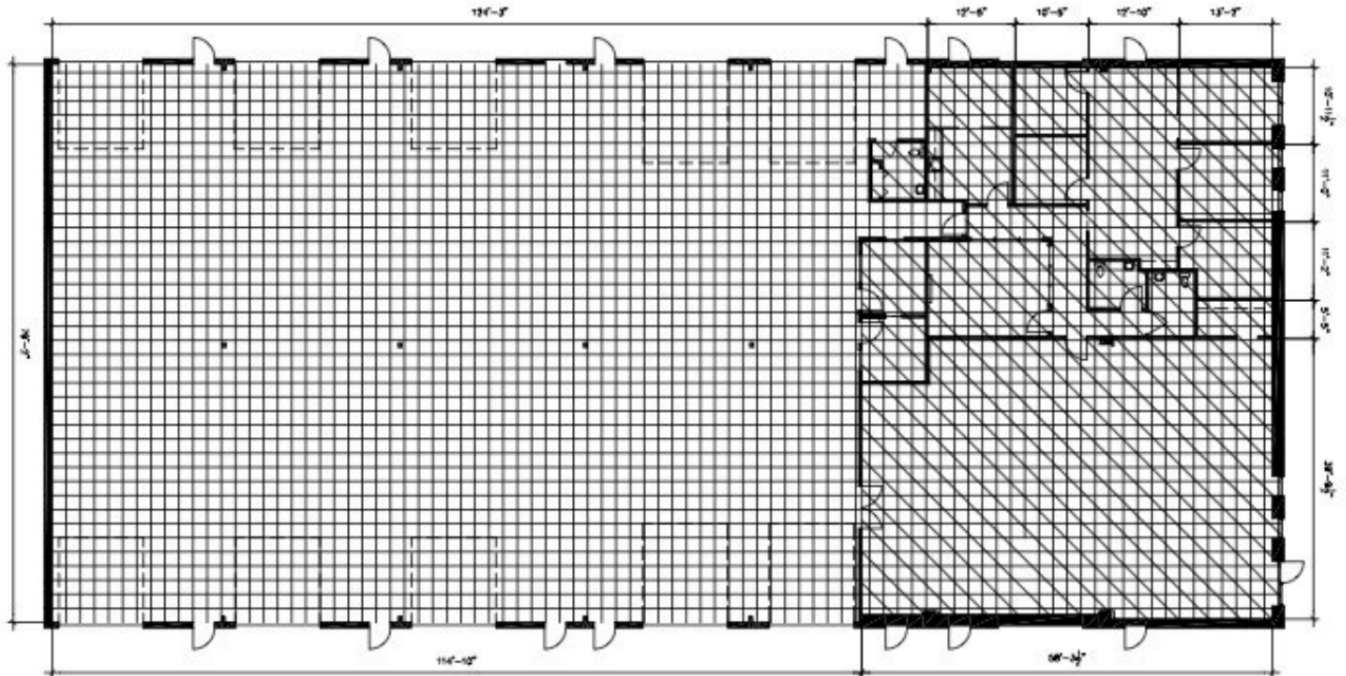
Asking Rent: \$0.90 / SF

Drawing for:
ROUTE SERVICE CENTER, INC.
404 W. Powell, Ste 202
Austin, Texas 78753
Ph: 252-9900


SUITE 700
OMNI BUSINESS PARK
7303 Burleson Rd.
RENTABLE AREA: 14,200 S.F.

THE DIMENSIONS AND LOCATIONS OF THE WALLS AND DOORS ARE APPROXIMATE TO THE 9" SCALE.
Project No.: 2020603
Rev. Date: August 1, 2025
©/2025

DIMENSIONS FLOOR PLANS
AUSTIN, TEXAS
DIMENSIONS FLOOR PLANS, INC.
PHONE: (512) 542-8114



NOTE:
Overlying grid is 2' x 2'
Not to scale.

 Air Conditioned Area

Office SF = 2,114
Warehouse SF = 12,086
Total RSF = 14,200

Contact Information:

(512) 252-9900
404 W Powell Lane, Suite 202, Austin, TX 78753
laynecompany.com

