

PACIFIC FERN BUSINESS PARK GRANDE WEST 5435 LA BOUNTY RD FERNDALE, WA 98248

FABER CONSTRUCTION 6915 HANDEGAN ROAD, LYNDEN, WA 98284 PHONE: 1360.354.3500 EMAIL: rj@faberconstruction.com

KING ARCHITECTURE, LLC 401 HARRIS AVE STE 100 BELLINGHAM, WA 98225 PHONE: 1360.201.3410 EMAIL: tim@king-architecture.com

APC ENGINEERS 1401 ASTOR ST BELLINGHAM, WA 98225 PHONE: 1360.971.1146 EMAIL: rick@apcengineers.com

ZEEGERS ENGINEERING INC 2115 ELECTRIC AVE BELLINGHAM, WA 98221 PHONE: 1360.676.2559 EMAIL: zee@zecomultimedia.com

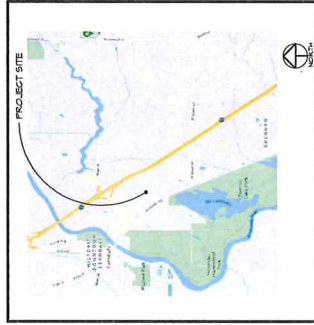
BERONA ENGINEERS, INC 4630 202TH ST SW STE 10 LYNNWOOD, WA 98236 PHONE: 1425.744.0033 EMAIL: mberona@beronainc.com

AWA ELECTRICAL CONSULTANTS, LLC 19015 35TH AVE, WEST SITE E LYNNWOOD, WA 98296 PHONE: 1425.175.1798 ext. 103 EMAIL: dms@awaelectrical.com

LYNDEN SHEET METAL 251 EVERGREEN ST, LYNDEN, WA 98264 PHONE: 1360.354.3491 EMAIL: bml@lsmshetmetal.com

LIGHTNING ELECTRIC, LLC 1282 E 5TH RD, BELLINGHAM, WA 98226 PHONE: 1360.351.4311 EMAIL: jason@lightningelectric.com

VICINITY MAP



DRAWING INDEX

- GENERAL
 - A01 PERMIT APPLICATION
 - A02 COVER SHEET
 - A03 CODE REVIEW PLAN
- CIVIL
 - C1 SITE PLAN
 - C2 LAYOUT PLAN - NORTH
 - C3 UNIMPAVED DRIVE PLAN
 - C4 UNIMPAVED DRIVE PLAN - NORTH
 - C5 UNIMPAVED DRIVE PLAN - SOUTH
 - C6 UNIMPAVED DRIVE PLAN - WEST
 - C7 UNIMPAVED DRIVE PLAN - EAST
 - C8 UNIMPAVED DRIVE PLAN - WEST
 - C9 UNIMPAVED DRIVE PLAN - EAST
 - C10 UNIMPAVED DRIVE PLAN - WEST
 - C11 UNIMPAVED DRIVE PLAN - EAST
 - C12 UNIMPAVED DRIVE PLAN - WEST
 - C13 UNIMPAVED DRIVE PLAN - EAST
 - C14 UNIMPAVED DRIVE PLAN - WEST
 - C15 UNIMPAVED DRIVE PLAN - EAST
 - C16 UNIMPAVED DRIVE PLAN - WEST
 - C17 UNIMPAVED DRIVE PLAN - EAST
 - C18 UNIMPAVED DRIVE PLAN - WEST
 - C19 UNIMPAVED DRIVE PLAN - EAST
 - C20 UNIMPAVED DRIVE PLAN - WEST
 - C21 UNIMPAVED DRIVE PLAN - EAST
 - C22 UNIMPAVED DRIVE PLAN - WEST
 - C23 UNIMPAVED DRIVE PLAN - EAST
 - C24 UNIMPAVED DRIVE PLAN - WEST
 - C25 UNIMPAVED DRIVE PLAN - EAST
 - C26 UNIMPAVED DRIVE PLAN - WEST
 - C27 UNIMPAVED DRIVE PLAN - EAST
 - C28 UNIMPAVED DRIVE PLAN - WEST
 - C29 UNIMPAVED DRIVE PLAN - EAST
 - C30 UNIMPAVED DRIVE PLAN - WEST
 - C31 UNIMPAVED DRIVE PLAN - EAST
 - C32 UNIMPAVED DRIVE PLAN - WEST
 - C33 UNIMPAVED DRIVE PLAN - EAST
 - C34 UNIMPAVED DRIVE PLAN - WEST
 - C35 UNIMPAVED DRIVE PLAN - EAST
 - C36 UNIMPAVED DRIVE PLAN - WEST
 - C37 UNIMPAVED DRIVE PLAN - EAST
 - C38 UNIMPAVED DRIVE PLAN - WEST
 - C39 UNIMPAVED DRIVE PLAN - EAST
 - C40 UNIMPAVED DRIVE PLAN - WEST
 - C41 UNIMPAVED DRIVE PLAN - EAST
 - C42 UNIMPAVED DRIVE PLAN - WEST
 - C43 UNIMPAVED DRIVE PLAN - EAST
 - C44 UNIMPAVED DRIVE PLAN - WEST
 - C45 UNIMPAVED DRIVE PLAN - EAST
 - C46 UNIMPAVED DRIVE PLAN - WEST
 - C47 UNIMPAVED DRIVE PLAN - EAST
 - C48 UNIMPAVED DRIVE PLAN - WEST
 - C49 UNIMPAVED DRIVE PLAN - EAST
 - C50 UNIMPAVED DRIVE PLAN - WEST
 - C51 UNIMPAVED DRIVE PLAN - EAST
 - C52 UNIMPAVED DRIVE PLAN - WEST
 - C53 UNIMPAVED DRIVE PLAN - EAST
 - C54 UNIMPAVED DRIVE PLAN - WEST
 - C55 UNIMPAVED DRIVE PLAN - EAST
 - C56 UNIMPAVED DRIVE PLAN - WEST
 - C57 UNIMPAVED DRIVE PLAN - EAST
 - C58 UNIMPAVED DRIVE PLAN - WEST
 - C59 UNIMPAVED DRIVE PLAN - EAST
 - C60 UNIMPAVED DRIVE PLAN - WEST
 - C61 UNIMPAVED DRIVE PLAN - EAST
 - C62 UNIMPAVED DRIVE PLAN - WEST
 - C63 UNIMPAVED DRIVE PLAN - EAST
 - C64 UNIMPAVED DRIVE PLAN - WEST
 - C65 UNIMPAVED DRIVE PLAN - EAST
 - C66 UNIMPAVED DRIVE PLAN - WEST
 - C67 UNIMPAVED DRIVE PLAN - EAST
 - C68 UNIMPAVED DRIVE PLAN - WEST
 - C69 UNIMPAVED DRIVE PLAN - EAST
 - C70 UNIMPAVED DRIVE PLAN - WEST
 - C71 UNIMPAVED DRIVE PLAN - EAST
 - C72 UNIMPAVED DRIVE PLAN - WEST
 - C73 UNIMPAVED DRIVE PLAN - EAST
 - C74 UNIMPAVED DRIVE PLAN - WEST
 - C75 UNIMPAVED DRIVE PLAN - EAST
 - C76 UNIMPAVED DRIVE PLAN - WEST
 - C77 UNIMPAVED DRIVE PLAN - EAST
 - C78 UNIMPAVED DRIVE PLAN - WEST
 - C79 UNIMPAVED DRIVE PLAN - EAST
 - C80 UNIMPAVED DRIVE PLAN - WEST
 - C81 UNIMPAVED DRIVE PLAN - EAST
 - C82 UNIMPAVED DRIVE PLAN - WEST
 - C83 UNIMPAVED DRIVE PLAN - EAST
 - C84 UNIMPAVED DRIVE PLAN - WEST
 - C85 UNIMPAVED DRIVE PLAN - EAST
 - C86 UNIMPAVED DRIVE PLAN - WEST
 - C87 UNIMPAVED DRIVE PLAN - EAST
 - C88 UNIMPAVED DRIVE PLAN - WEST
 - C89 UNIMPAVED DRIVE PLAN - EAST
 - C90 UNIMPAVED DRIVE PLAN - WEST
 - C91 UNIMPAVED DRIVE PLAN - EAST
 - C92 UNIMPAVED DRIVE PLAN - WEST
 - C93 UNIMPAVED DRIVE PLAN - EAST
 - C94 UNIMPAVED DRIVE PLAN - WEST
 - C95 UNIMPAVED DRIVE PLAN - EAST
 - C96 UNIMPAVED DRIVE PLAN - WEST
 - C97 UNIMPAVED DRIVE PLAN - EAST
 - C98 UNIMPAVED DRIVE PLAN - WEST
 - C99 UNIMPAVED DRIVE PLAN - EAST
 - C100 UNIMPAVED DRIVE PLAN - WEST
- LANDSCAPING
 - L1 LANDSCAPING PLAN
- ARCHITECTURAL
 - A11 MAIN FLOOR PLAN - EAST
 - A12 MAIN FLOOR PLAN - WEST
 - A13 MAIN FLOOR PLAN - NORTH
 - A14 MAIN FLOOR PLAN - SOUTH
 - A15 MAIN FLOOR PLAN - WEST
 - A16 MAIN FLOOR PLAN - EAST
 - A17 MAIN FLOOR PLAN - NORTH
 - A18 MAIN FLOOR PLAN - SOUTH
 - A19 MAIN FLOOR PLAN - WEST
 - A20 MAIN FLOOR PLAN - EAST
 - A21 MAIN FLOOR PLAN - NORTH
 - A22 MAIN FLOOR PLAN - SOUTH
 - A23 MAIN FLOOR PLAN - WEST
 - A24 MAIN FLOOR PLAN - EAST
 - A25 MAIN FLOOR PLAN - NORTH
 - A26 MAIN FLOOR PLAN - SOUTH
 - A27 MAIN FLOOR PLAN - WEST
 - A28 MAIN FLOOR PLAN - EAST
 - A29 MAIN FLOOR PLAN - NORTH
 - A30 MAIN FLOOR PLAN - SOUTH
 - A31 MAIN FLOOR PLAN - WEST
 - A32 MAIN FLOOR PLAN - EAST
 - A33 MAIN FLOOR PLAN - NORTH
 - A34 MAIN FLOOR PLAN - SOUTH
 - A35 MAIN FLOOR PLAN - WEST
 - A36 MAIN FLOOR PLAN - EAST
 - A37 MAIN FLOOR PLAN - NORTH
 - A38 MAIN FLOOR PLAN - SOUTH
 - A39 MAIN FLOOR PLAN - WEST
 - A40 MAIN FLOOR PLAN - EAST
 - A41 MAIN FLOOR PLAN - NORTH
 - A42 MAIN FLOOR PLAN - SOUTH
 - A43 MAIN FLOOR PLAN - WEST
 - A44 MAIN FLOOR PLAN - EAST
 - A45 MAIN FLOOR PLAN - NORTH
 - A46 MAIN FLOOR PLAN - SOUTH
 - A47 MAIN FLOOR PLAN - WEST
 - A48 MAIN FLOOR PLAN - EAST
 - A49 MAIN FLOOR PLAN - NORTH
 - A50 MAIN FLOOR PLAN - SOUTH
 - A51 MAIN FLOOR PLAN - WEST
 - A52 MAIN FLOOR PLAN - EAST
 - A53 MAIN FLOOR PLAN - NORTH
 - A54 MAIN FLOOR PLAN - SOUTH
 - A55 MAIN FLOOR PLAN - WEST
 - A56 MAIN FLOOR PLAN - EAST
 - A57 MAIN FLOOR PLAN - NORTH
 - A58 MAIN FLOOR PLAN - SOUTH
 - A59 MAIN FLOOR PLAN - WEST
 - A60 MAIN FLOOR PLAN - EAST
 - A61 MAIN FLOOR PLAN - NORTH
 - A62 MAIN FLOOR PLAN - SOUTH
 - A63 MAIN FLOOR PLAN - WEST
 - A64 MAIN FLOOR PLAN - EAST
 - A65 MAIN FLOOR PLAN - NORTH
 - A66 MAIN FLOOR PLAN - SOUTH
 - A67 MAIN FLOOR PLAN - WEST
 - A68 MAIN FLOOR PLAN - EAST
 - A69 MAIN FLOOR PLAN - NORTH
 - A70 MAIN FLOOR PLAN - SOUTH
 - A71 MAIN FLOOR PLAN - WEST
 - A72 MAIN FLOOR PLAN - EAST
 - A73 MAIN FLOOR PLAN - NORTH
 - A74 MAIN FLOOR PLAN - SOUTH
 - A75 MAIN FLOOR PLAN - WEST
 - A76 MAIN FLOOR PLAN - EAST
 - A77 MAIN FLOOR PLAN - NORTH
 - A78 MAIN FLOOR PLAN - SOUTH
 - A79 MAIN FLOOR PLAN - WEST
 - A80 MAIN FLOOR PLAN - EAST
 - A81 MAIN FLOOR PLAN - NORTH
 - A82 MAIN FLOOR PLAN - SOUTH
 - A83 MAIN FLOOR PLAN - WEST
 - A84 MAIN FLOOR PLAN - EAST
 - A85 MAIN FLOOR PLAN - NORTH
 - A86 MAIN FLOOR PLAN - SOUTH
 - A87 MAIN FLOOR PLAN - WEST
 - A88 MAIN FLOOR PLAN - EAST
 - A89 MAIN FLOOR PLAN - NORTH
 - A90 MAIN FLOOR PLAN - SOUTH
 - A91 MAIN FLOOR PLAN - WEST
 - A92 MAIN FLOOR PLAN - EAST
 - A93 MAIN FLOOR PLAN - NORTH
 - A94 MAIN FLOOR PLAN - SOUTH
 - A95 MAIN FLOOR PLAN - WEST
 - A96 MAIN FLOOR PLAN - EAST
 - A97 MAIN FLOOR PLAN - NORTH
 - A98 MAIN FLOOR PLAN - SOUTH
 - A99 MAIN FLOOR PLAN - WEST
 - A100 MAIN FLOOR PLAN - EAST
- MECHANICAL
 - M1 MECHANICAL NOTES
 - M2 MECHANICAL SCHEDULES
 - M3 MECHANICAL SCHEDULES
 - M4 MECHANICAL SCHEDULES
 - M5 MECHANICAL SCHEDULES
 - M6 MECHANICAL SCHEDULES
 - M7 MECHANICAL SCHEDULES
 - M8 MECHANICAL SCHEDULES
 - M9 MECHANICAL SCHEDULES
 - M10 MECHANICAL SCHEDULES
 - M11 MECHANICAL SCHEDULES
 - M12 MECHANICAL SCHEDULES
 - M13 MECHANICAL SCHEDULES
 - M14 MECHANICAL SCHEDULES
 - M15 MECHANICAL SCHEDULES
 - M16 MECHANICAL SCHEDULES
 - M17 MECHANICAL SCHEDULES
 - M18 MECHANICAL SCHEDULES
 - M19 MECHANICAL SCHEDULES
 - M20 MECHANICAL SCHEDULES
 - M21 MECHANICAL SCHEDULES
 - M22 MECHANICAL SCHEDULES
 - M23 MECHANICAL SCHEDULES
 - M24 MECHANICAL SCHEDULES
 - M25 MECHANICAL SCHEDULES
 - M26 MECHANICAL SCHEDULES
 - M27 MECHANICAL SCHEDULES
 - M28 MECHANICAL SCHEDULES
 - M29 MECHANICAL SCHEDULES
 - M30 MECHANICAL SCHEDULES
 - M31 MECHANICAL SCHEDULES
 - M32 MECHANICAL SCHEDULES
 - M33 MECHANICAL SCHEDULES
 - M34 MECHANICAL SCHEDULES
 - M35 MECHANICAL SCHEDULES
 - M36 MECHANICAL SCHEDULES
 - M37 MECHANICAL SCHEDULES
 - M38 MECHANICAL SCHEDULES
 - M39 MECHANICAL SCHEDULES
 - M40 MECHANICAL SCHEDULES
 - M41 MECHANICAL SCHEDULES
 - M42 MECHANICAL SCHEDULES
 - M43 MECHANICAL SCHEDULES
 - M44 MECHANICAL SCHEDULES
 - M45 MECHANICAL SCHEDULES
 - M46 MECHANICAL SCHEDULES
 - M47 MECHANICAL SCHEDULES
 - M48 MECHANICAL SCHEDULES
 - M49 MECHANICAL SCHEDULES
 - M50 MECHANICAL SCHEDULES
 - M51 MECHANICAL SCHEDULES
 - M52 MECHANICAL SCHEDULES
 - M53 MECHANICAL SCHEDULES
 - M54 MECHANICAL SCHEDULES
 - M55 MECHANICAL SCHEDULES
 - M56 MECHANICAL SCHEDULES
 - M57 MECHANICAL SCHEDULES
 - M58 MECHANICAL SCHEDULES
 - M59 MECHANICAL SCHEDULES
 - M60 MECHANICAL SCHEDULES
 - M61 MECHANICAL SCHEDULES
 - M62 MECHANICAL SCHEDULES
 - M63 MECHANICAL SCHEDULES
 - M64 MECHANICAL SCHEDULES
 - M65 MECHANICAL SCHEDULES
 - M66 MECHANICAL SCHEDULES
 - M67 MECHANICAL SCHEDULES
 - M68 MECHANICAL SCHEDULES
 - M69 MECHANICAL SCHEDULES
 - M70 MECHANICAL SCHEDULES
 - M71 MECHANICAL SCHEDULES
 - M72 MECHANICAL SCHEDULES
 - M73 MECHANICAL SCHEDULES
 - M74 MECHANICAL SCHEDULES
 - M75 MECHANICAL SCHEDULES
 - M76 MECHANICAL SCHEDULES
 - M77 MECHANICAL SCHEDULES
 - M78 MECHANICAL SCHEDULES
 - M79 MECHANICAL SCHEDULES
 - M80 MECHANICAL SCHEDULES
 - M81 MECHANICAL SCHEDULES
 - M82 MECHANICAL SCHEDULES
 - M83 MECHANICAL SCHEDULES
 - M84 MECHANICAL SCHEDULES
 - M85 MECHANICAL SCHEDULES
 - M86 MECHANICAL SCHEDULES
 - M87 MECHANICAL SCHEDULES
 - M88 MECHANICAL SCHEDULES
 - M89 MECHANICAL SCHEDULES
 - M90 MECHANICAL SCHEDULES
 - M91 MECHANICAL SCHEDULES
 - M92 MECHANICAL SCHEDULES
 - M93 MECHANICAL SCHEDULES
 - M94 MECHANICAL SCHEDULES
 - M95 MECHANICAL SCHEDULES
 - M96 MECHANICAL SCHEDULES
 - M97 MECHANICAL SCHEDULES
 - M98 MECHANICAL SCHEDULES
 - M99 MECHANICAL SCHEDULES
 - M100 MECHANICAL SCHEDULES
- ELECTRICAL
 - E1 ELECTRICAL NOTES
 - E2 ELECTRICAL SCHEDULES
 - E3 ELECTRICAL SCHEDULES
 - E4 ELECTRICAL SCHEDULES
 - E5 ELECTRICAL SCHEDULES
 - E6 ELECTRICAL SCHEDULES
 - E7 ELECTRICAL SCHEDULES
 - E8 ELECTRICAL SCHEDULES
 - E9 ELECTRICAL SCHEDULES
 - E10 ELECTRICAL SCHEDULES
 - E11 ELECTRICAL SCHEDULES
 - E12 ELECTRICAL SCHEDULES
 - E13 ELECTRICAL SCHEDULES
 - E14 ELECTRICAL SCHEDULES
 - E15 ELECTRICAL SCHEDULES
 - E16 ELECTRICAL SCHEDULES
 - E17 ELECTRICAL SCHEDULES
 - E18 ELECTRICAL SCHEDULES
 - E19 ELECTRICAL SCHEDULES
 - E20 ELECTRICAL SCHEDULES
 - E21 ELECTRICAL SCHEDULES
 - E22 ELECTRICAL SCHEDULES
 - E23 ELECTRICAL SCHEDULES
 - E24 ELECTRICAL SCHEDULES
 - E25 ELECTRICAL SCHEDULES
 - E26 ELECTRICAL SCHEDULES
 - E27 ELECTRICAL SCHEDULES
 - E28 ELECTRICAL SCHEDULES
 - E29 ELECTRICAL SCHEDULES
 - E30 ELECTRICAL SCHEDULES
 - E31 ELECTRICAL SCHEDULES
 - E32 ELECTRICAL SCHEDULES
 - E33 ELECTRICAL SCHEDULES
 - E34 ELECTRICAL SCHEDULES
 - E35 ELECTRICAL SCHEDULES
 - E36 ELECTRICAL SCHEDULES
 - E37 ELECTRICAL SCHEDULES
 - E38 ELECTRICAL SCHEDULES
 - E39 ELECTRICAL SCHEDULES
 - E40 ELECTRICAL SCHEDULES
 - E41 ELECTRICAL SCHEDULES
 - E42 ELECTRICAL SCHEDULES
 - E43 ELECTRICAL SCHEDULES
 - E44 ELECTRICAL SCHEDULES
 - E45 ELECTRICAL SCHEDULES
 - E46 ELECTRICAL SCHEDULES
 - E47 ELECTRICAL SCHEDULES
 - E48 ELECTRICAL SCHEDULES
 - E49 ELECTRICAL SCHEDULES
 - E50 ELECTRICAL SCHEDULES
 - E51 ELECTRICAL SCHEDULES
 - E52 ELECTRICAL SCHEDULES
 - E53 ELECTRICAL SCHEDULES
 - E54 ELECTRICAL SCHEDULES
 - E55 ELECTRICAL SCHEDULES
 - E56 ELECTRICAL SCHEDULES
 - E57 ELECTRICAL SCHEDULES
 - E58 ELECTRICAL SCHEDULES
 - E59 ELECTRICAL SCHEDULES
 - E60 ELECTRICAL SCHEDULES
 - E61 ELECTRICAL SCHEDULES
 - E62 ELECTRICAL SCHEDULES
 - E63 ELECTRICAL SCHEDULES
 - E64 ELECTRICAL SCHEDULES
 - E65 ELECTRICAL SCHEDULES
 - E66 ELECTRICAL SCHEDULES
 - E67 ELECTRICAL SCHEDULES
 - E68 ELECTRICAL SCHEDULES
 - E69 ELECTRICAL SCHEDULES
 - E70 ELECTRICAL SCHEDULES
 - E71 ELECTRICAL SCHEDULES
 - E72 ELECTRICAL SCHEDULES
 - E73 ELECTRICAL SCHEDULES
 - E74 ELECTRICAL SCHEDULES
 - E75 ELECTRICAL SCHEDULES
 - E76 ELECTRICAL SCHEDULES
 - E77 ELECTRICAL SCHEDULES
 - E78 ELECTRICAL SCHEDULES
 - E79 ELECTRICAL SCHEDULES
 - E80 ELECTRICAL SCHEDULES
 - E81 ELECTRICAL SCHEDULES
 - E82 ELECTRICAL SCHEDULES
 - E83 ELECTRICAL SCHEDULES
 - E84 ELECTRICAL SCHEDULES
 - E85 ELECTRICAL SCHEDULES
 - E86 ELECTRICAL SCHEDULES
 - E87 ELECTRICAL SCHEDULES
 - E88 ELECTRICAL SCHEDULES
 - E89 ELECTRICAL SCHEDULES
 - E90 ELECTRICAL SCHEDULES
 - E91 ELECTRICAL SCHEDULES
 - E92 ELECTRICAL SCHEDULES
 - E93 ELECTRICAL SCHEDULES
 - E94 ELECTRICAL SCHEDULES
 - E95 ELECTRICAL SCHEDULES
 - E96 ELECTRICAL SCHEDULES
 - E97 ELECTRICAL SCHEDULES
 - E98 ELECTRICAL SCHEDULES
 - E99 ELECTRICAL SCHEDULES
 - E100 ELECTRICAL SCHEDULES
- PLUMBING
 - P1 PLUMBING NOTES
 - P2 PLUMBING SCHEDULES
 - P3 PLUMBING SCHEDULES
 - P4 PLUMBING SCHEDULES
 - P5 PLUMBING SCHEDULES
 - P6 PLUMBING SCHEDULES
 - P7 PLUMBING SCHEDULES
 - P8 PLUMBING SCHEDULES
 - P9 PLUMBING SCHEDULES
 - P10 PLUMBING SCHEDULES
 - P11 PLUMBING SCHEDULES
 - P12 PLUMBING SCHEDULES
 - P13 PLUMBING SCHEDULES
 - P14 PLUMBING SCHEDULES
 - P15 PLUMBING SCHEDULES
 - P16 PLUMBING SCHEDULES
 - P17 PLUMBING SCHEDULES
 - P18 PLUMBING SCHEDULES
 - P19 PLUMBING SCHEDULES
 - P20 PLUMBING SCHEDULES
 - P21 PLUMBING SCHEDULES
 - P22 PLUMBING SCHEDULES
 - P23 PLUMBING SCHEDULES
 - P24 PLUMBING SCHEDULES
 - P25 PLUMBING SCHEDULES
 - P26 PLUMBING SCHEDULES
 - P27 PLUMBING SCHEDULES
 - P28 PLUMBING SCHEDULES
 - P29 PLUMBING SCHEDULES
 - P30 PLUMBING SCHEDULES
 - P31 PLUMBING SCHEDULES
 - P32 PLUMBING SCHEDULES
 - P33 PLUMBING SCHEDULES
 - P34 PLUMBING SCHEDULES
 - P35 PLUMBING SCHEDULES
 - P36 PLUMBING SCHEDULES
 - P37 PLUMBING SCHEDULES
 - P38 PLUMBING SCHEDULES
 - P39 PLUMBING SCHEDULES
 - P40 PLUMBING SCHEDULES
 - P41 PLUMBING SCHEDULES
 - P42 PLUMBING SCHEDULES
 - P43 PLUMBING SCHEDULES
 - P44 PLUMBING SCHEDULES
 - P45 PLUMBING SCHEDULES
 - P46 PLUMBING SCHEDULES
 - P47 PLUMBING SCHEDULES
 - P48 PLUMBING SCHEDULES
 - P49 PLUMBING SCHEDULES
 - P50 PLUMBING SCHEDULES
 - P51 PLUMBING SCHEDULES
 - P52 PLUMBING SCHEDULES
 - P53 PLUMBING SCHEDULES
 - P54 PLUMBING SCHEDULES
 - P55 PLUMBING SCHEDULES
 - P56 PLUMBING SCHEDULES
 - P57 PLUMBING SCHEDULES
 - P58 PLUMBING SCHEDULES
 - P59 PLUMBING SCHEDULES
 - P60 PLUMBING SCHEDULES
 - P61 PLUMBING SCHEDULES
 - P62 PLUMBING SCHEDULES
 - P63 PLUMBING SCHEDULES
 - P64 PLUMBING SCHEDULES
 - P65 PLUMBING SCHEDULES
 - P66 PLUMBING SCHEDULES
 - P67 PLUMBING SCHEDULES
 - P68 PLUMBING SCHEDULES
 - P69 PLUMBING SCHEDULES
 - P70 PLUMBING SCHEDULES
 - P71 PLUMBING SCHEDULES
 - P72 PLUMBING SCHEDULES
 - P73 PLUMBING SCHEDULES
 - P74 PLUMBING SCHEDULES
 - P75 PLUMBING SCHEDULES
 - P76 PLUMBING SCHEDULES
 - P77 PLUMBING SCHEDULES
 - P78 PLUMBING SCHEDULES
 - P79 PLUMBING SCHEDULES
 - P80 PLUMBING SCHEDULES
 - P81 PLUMBING SCHEDULES
 - P82 PLUMBING SCHEDULES
 - P83 PLUMBING SCHEDULES
 - P84 PLUMBING SCHEDULES
 - P85 PLUMBING SCHEDULES
 - P86 PLUMBING SCHEDULES
 - P87 PLUMBING SCHEDULES
 - P88 PLUMBING SCHEDULES
 - P89 PLUMBING SCHEDULES
 - P90 PLUMBING SCHEDULES
 - P91 PLUMBING SCHEDULES
 - P92 PLUMBING SCHEDULES
 - P93 PLUMBING SCHEDULES
 - P94 PLUMBING SCHEDULES
 - P95 PLUMBING SCHEDULES
 - P96 PLUMBING SCHEDULES
 - P97 PLUMBING SCHEDULES
 - P98 PLUMBING SCHEDULES
 - P99 PLUMBING SCHEDULES
 - P100 PLUMBING SCHEDULES

- ### DEFERRED SUBMITTAL ITEMS
1. PLANS FOR PACKING SYSTEM
 2. FIRE SPRINKLER DESIGN
 3. FIRE ALARM SYSTEM
 4. MECHANICAL AND ELECTRICAL SHOP DRAWINGS & CALCULATIONS
 5. PAINT BOOTH

GENERAL PROPERTY DATA

LOCATIONS: 5463 24ST, 5463 & 5465 LABOYNTY ROAD - LOTS 1, 6, 9 & 10 FERNDALE, WA 98248

ZONING: PACIFIC FERN BUSINESS PARK
GENERAL BUSINESS - USE SHOP-CUP FOR CONDITIONAL USE FOR BUS ASSEMBLY

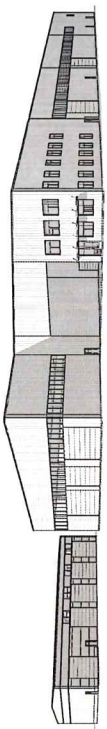
PARCELS: 340 228 072 101, 340 228 031 150 & 340 228 030 011

LOT COVERAGE: SEE LANDSCAPING PLAN

PARKINGS: OFFICE / 300 + 5
2,604 S.F.
BASED ON LARGEST SHIF IN FACTORY + 31
PARKING STALLS PROVIDED = 50

JOB SITE COPY
Approved Permit and Plans Shall Remain on Site at ALL times

ANY DEVIATION IN CONSTRUCTION FROM APPROVED PLANS REQUIRES PRIOR REVIEW AND APPROVAL



OWNER / CONTRACTOR
ARCHITECT
CIVIL ENGINEER
STRUCTURAL ENGINEER
MECHANICAL ENGINEER
ELECTRICAL ENGINEER
MECHANICAL CONTRACTOR
ELECTRICAL CONTRACTOR

City of Ferndale
Reviewed for Code Compliance
Plans Examiner: Kyle Huebner Date: 07/28/2021

I HAVE REVIEWED ALL NOTES AND CHANGES TO THIS CONSTRUCTION DRAWING PRIOR TO ISSUANCE OF BUILDING PERMIT

SIGNED _____ **DATE** _____

CODE REVIEW

INTERNATIONAL BUILDING CODES INTERNATIONAL BUILDING CODES
BUILDING CODES 2018 IBC AMENDMENT 10/18/18
CONSTRUCTION TYPE III
SPECIAL INSULATION TYPE III (1) (2) (3) (4) (5) (6) (7) (8) (9) (10) (11) (12) (13) (14) (15) (16) (17) (18) (19) (20) (21) (22) (23) (24) (25) (26) (27) (28) (29) (30) (31) (32) (33) (34) (35) (36) (37) (38) (39) (40) (41) (42) (43) (44) (45) (46) (47) (48) (49) (50) (51) (52) (53) (54) (55) (56) (57) (58) (59) (60) (61) (62) (63) (64) (65) (66) (67) (68) (69) (70) (71) (72) (73) (74) (75) (76) (77) (78) (79) (80) (81) (82) (83) (84) (85) (86) (87) (88) (89) (90) (91) (92) (93) (94) (95) (96) (97) (98) (99) (100) (101) (102) (103) (104) (105) (106) (107) (108) (109) (110) (111) (112) (113) (114) (115) (116) (117) (118) (119) (120) (121) (122) (123) (124) (125) (126) (127) (128) (129) (130) (131) (132) (133) (134) (135) (136) (137) (138) (139) (140) (141) (142) (143) (144) (145) (146) (147) (148) (149) (150) (151) (152) (153) (154) (155) (156) (157) (158) (159) (160) (161) (162) (163) (164) (165) (166) (167) (168) (169) (170) (171) (172) (173) (174) (175) (176) (177) (178) (179) (180) (181) (182) (183) (184) (185) (186) (187) (188) (189) (190) (191) (192) (193) (194) (195) (196) (197) (198) (199) (200) (201) (202) (203) (204) (205) (206) (207) (208) (209) (210) (211) (212) (213) (214) (215) (216) (217) (218) (219) (220) (221) (222) (223) (224) (225) (226) (227) (228) (229) (230) (231) (232) (233) (234) (235) (236) (237) (238) (239) (240) (241) (242) (243) (244) (245) (246) (247) (248) (249) (250) (251) (252) (253) (254) (255) (256) (257) (258) (259) (260) (261) (262) (263) (264) (265) (266) (267) (268) (269) (270) (271) (272) (273) (274) (275) (276) (277) (278) (279) (280) (281) (282) (283) (284) (285) (286) (287) (288) (289) (290) (291) (292) (293) (294) (295) (296) (297) (298) (299) (300) (301) (302) (303) (304) (305) (306) (307) (308) (309) (310) (311) (312) (313) (314) (315) (316) (317) (318) (319) (320) (321) (322) (323) (324) (325) (326) (327) (328) (329) (330) (331) (332) (333) (334) (335) (336) (337) (338) (339) (340) (341) (342) (343) (344) (345) (346) (347) (348) (349) (350) (351) (352) (353) (354) (355) (356) (357) (358) (359) (360) (361) (362) (363) (364) (365) (366) (367) (368) (369) (370) (371) (372) (373) (374) (375) (376) (377) (378) (379) (380) (381) (382) (383) (384) (385) (386) (387) (388) (389) (390) (391) (392) (393) (394) (395) (396) (397) (398) (399) (400) (401) (402) (403) (404) (405) (406) (407) (408) (409) (410) (411) (412) (413) (414) (415) (416) (417) (418) (419) (420) (421) (422) (423) (424) (425) (426) (427) (428) (429) (430) (431) (432) (433) (434) (435) (436) (437) (438) (439) (440) (441) (442) (443) (444) (445) (446) (447) (448) (449) (450) (451) (452) (453) (454) (455) (456) (457) (458) (459) (460) (461) (462) (463) (464) (465) (466) (467) (468) (469) (470) (471) (472) (473) (474) (475) (476) (477) (478) (479) (480) (481) (482) (483) (484) (485) (486) (487) (488) (489) (490) (491) (492) (493) (494) (495) (496) (497) (498) (499) (500) (501) (502) (503) (504) (505) (506) (507) (508) (509) (510) (511) (512) (513) (514) (515) (516) (517) (518) (519) (520) (521) (522) (523) (524) (525) (526) (527) (528) (529) (530) (531) (532) (533) (534) (535) (536) (537) (538) (539) (540) (541) (542) (543) (544) (545) (546) (547) (548) (549) (550) (551) (552) (553) (554) (555) (556) (557) (558) (559) (560) (561) (562) (563) (564) (565) (566) (567) (568) (569) (570) (571) (572) (573) (574) (575) (576) (577) (578) (579) (580) (581) (582) (583) (584) (585) (586) (587) (588) (589) (590) (591) (592) (593) (594) (595) (596) (597) (598) (599) (600) (601) (602) (603) (604) (605) (606) (607) (608) (609) (610) (611) (612) (613) (614) (615) (616) (617) (618) (619) (620) (621) (622) (623) (624) (625) (626) (627) (628) (629) (630) (631) (632) (633) (634) (635) (636) (637) (638) (639) (640) (641) (642) (643) (644) (645) (646) (647) (648) (649) (650) (651) (652) (653) (654) (655) (656) (657) (658) (659) (660) (661) (662) (663) (664) (665) (666) (667) (668) (669) (670) (671) (672) (673) (674) (675) (676) (677) (678) (679) (680) (681) (682) (683) (684) (685) (686) (687) (688) (689) (690) (691) (692)

DKING ARCHITECTURE, LLC
1111 WEST 10TH AVENUE, SUITE 100
DENVER, COLORADO 80202
TEL: 303.733.1111 FAX: 303.733.1112
WWW.DKINGARCHITECTURE.COM
DKING ARCHITECTURE, LLC IS AN EQUAL OPPORTUNITY FIRM.
NOT RESPONSIBLE FOR MARKS OR PATENT RIGHTS.
CONSTRUCTION OF THIS DESIGN SHALL BE THE RESPONSIBILITY OF THE CONTRACTOR.
DRAWINGS, SPECIFICATIONS AND NOTES SHALL BE THE RESPONSIBILITY OF THE ARCHITECT.
NO PART OF THESE DRAWINGS SHALL BE REPRODUCED OR TRANSMITTED IN ANY FORM OR BY ANY MEANS, ELECTRONIC OR MECHANICAL, INCLUDING PHOTOCOPYING, RECORDING, OR BY ANY INFORMATION STORAGE AND RETRIEVAL SYSTEM, WITHOUT THE WRITTEN PERMISSION OF DKING ARCHITECTURE, LLC.
IN THE EVENT OF A DISPUTE, THE ARCHITECT'S OFFICE SHALL BE THE NEAREST NEUTRAL VENUE FOR THE RESOLUTION OF ANY DISPUTE.
CONTRACTOR SHALL BE RESPONSIBLE FOR OBTAINING ALL NECESSARY PERMITS AND APPROVALS FROM THE APPLICABLE AGENCIES.
THESE DRAWINGS SHALL BE VALID ONLY FOR THE PROJECT AND SITE SPECIFICALLY IDENTIFIED HEREON.
NO PART OF THESE DRAWINGS SHALL BE REPRODUCED OR TRANSMITTED IN ANY FORM OR BY ANY MEANS, ELECTRONIC OR MECHANICAL, INCLUDING PHOTOCOPYING, RECORDING, OR BY ANY INFORMATION STORAGE AND RETRIEVAL SYSTEM, WITHOUT THE WRITTEN PERMISSION OF DKING ARCHITECTURE, LLC.
IN THE EVENT OF A DISPUTE, THE ARCHITECT'S OFFICE SHALL BE THE NEAREST NEUTRAL VENUE FOR THE RESOLUTION OF ANY DISPUTE.
CONTRACTOR SHALL BE RESPONSIBLE FOR OBTAINING ALL NECESSARY PERMITS AND APPROVALS FROM THE APPLICABLE AGENCIES.
THESE DRAWINGS SHALL BE VALID ONLY FOR THE PROJECT AND SITE SPECIFICALLY IDENTIFIED HEREON.

PACIFIC FERN
BUSINESS PARK
GRANDE WEST



PERMIT SET

18 JUNE 21

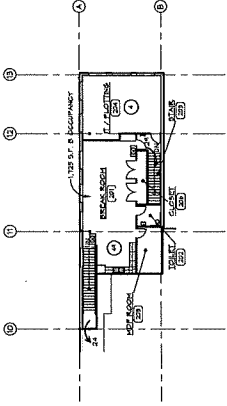
NO.	DATE ISSUED	REVISIONS

CODE REVIEW PLANS

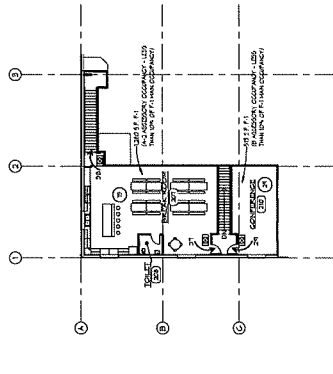
PROJECT NO.	DATE	REVISIONS

A0.3

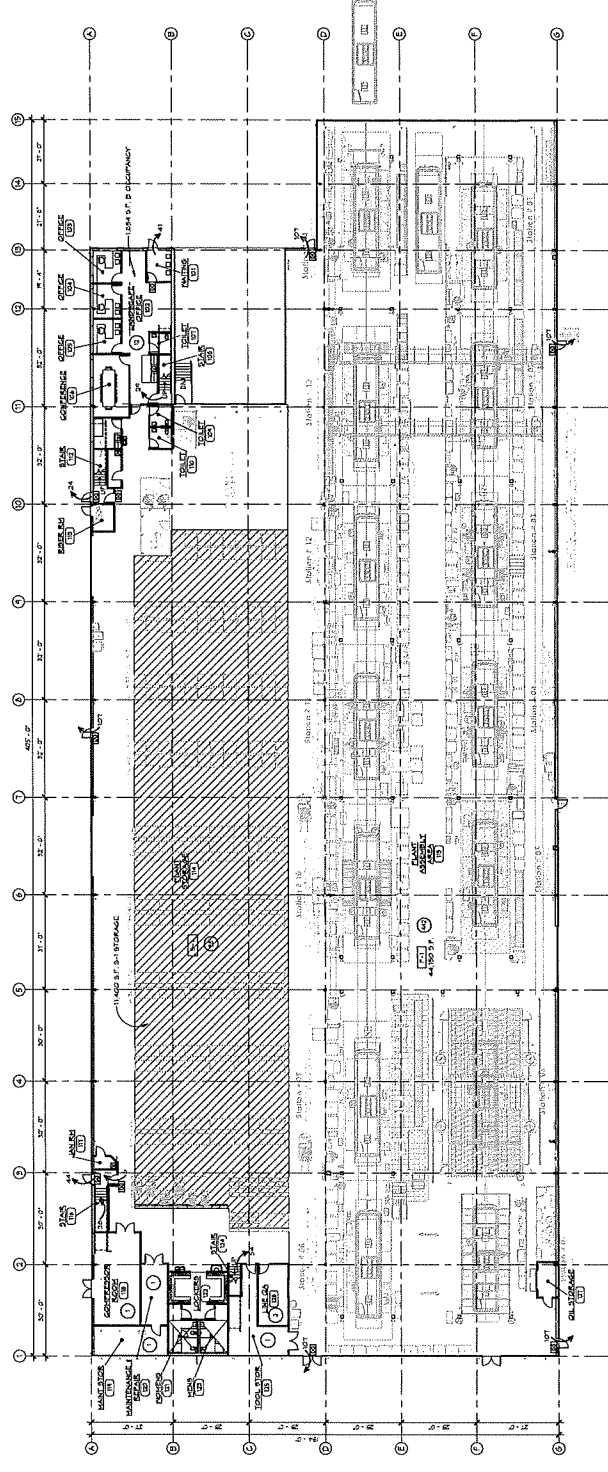
3 EAST MEZZANINE FLOOR - CODE REVIEW PLAN



2 WEST MEZZANINE FLOOR - CODE REVIEW PLAN

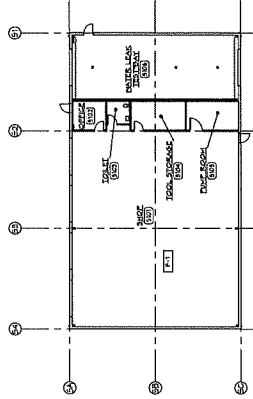


1 MAIN FLOOR - CODE REVIEW PLAN



CODE REVIEW LEGEND:
 * - REQUIRED BY IBC
 (1) - NUMBER OF OCCUPANTS
 (2) - OCCUPANCY CLASSIFICATION
 (3) - CONF. MEN

4 SHOP - MAIN FLOOR - CODE REVIEW PLAN



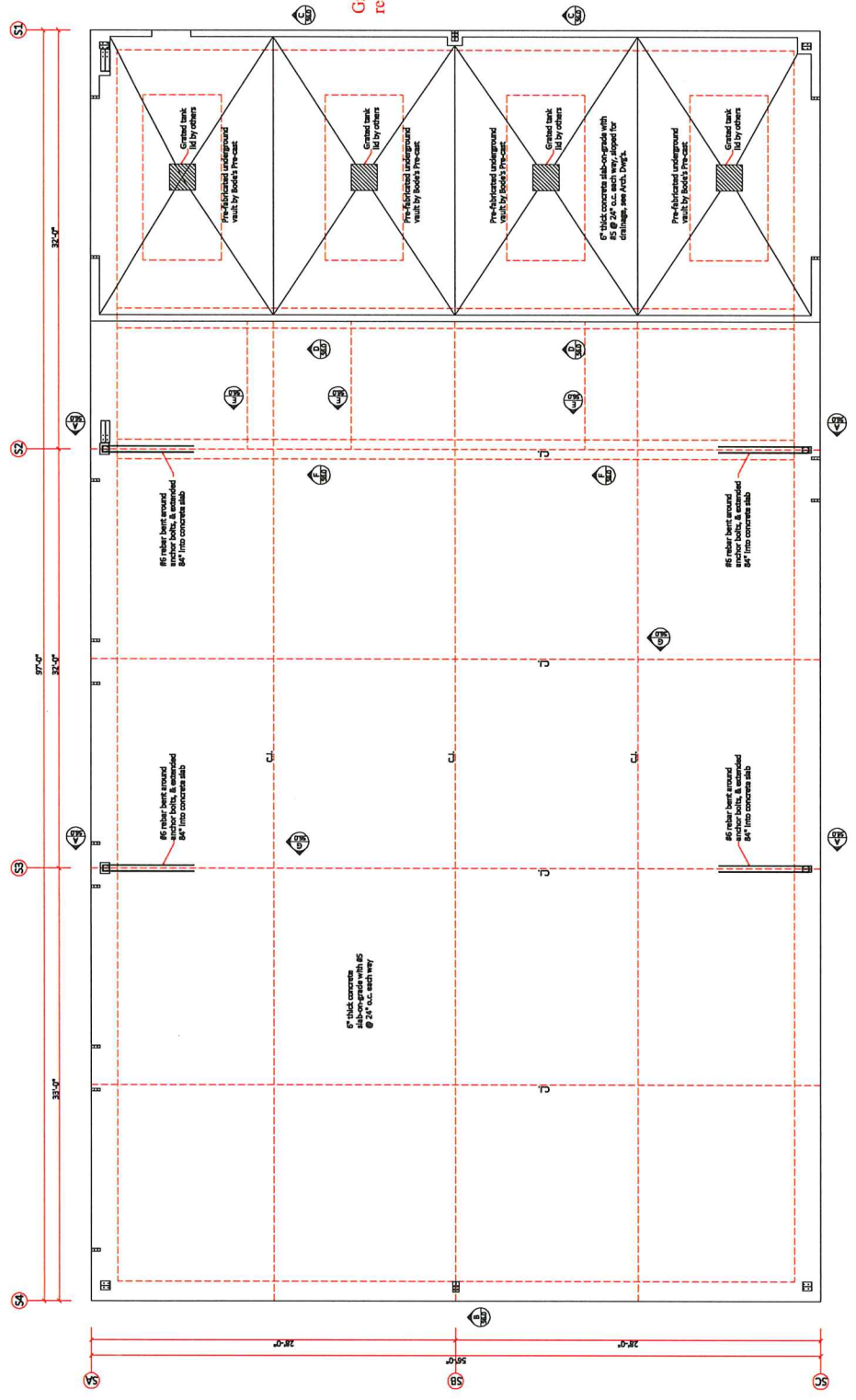


Electrically signed 6/23/2020

Grande West - Shop building

Revisions:	
Job #:	2137
Date:	6-23-2021
Drawn By:	Z

S 2.0



Grease / particulate interceptor required to be installed.

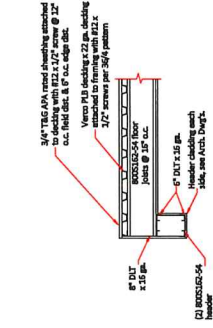
Foundation plan
1/4" = 1'-0"



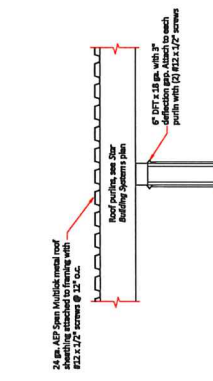
Lot layout plan
N.T.S.



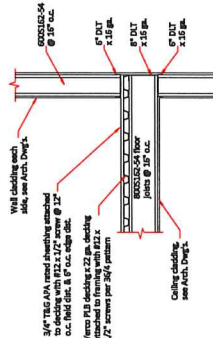
Electrically signed 07/23/2023



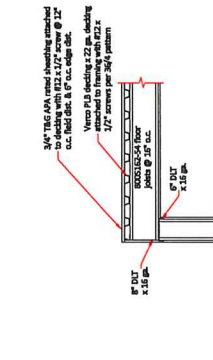
A Typical header detail
3/4" x 1 1/2"



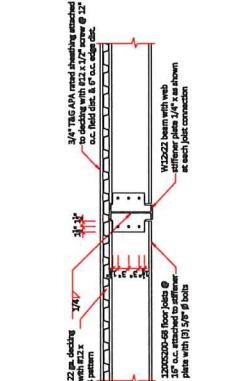
B Mezzanine joists to wall detail
3/4" x 1 1/2"



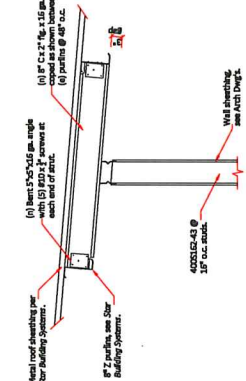
C Interior wall to roof purlins detail
3/4" x 1 1/2"



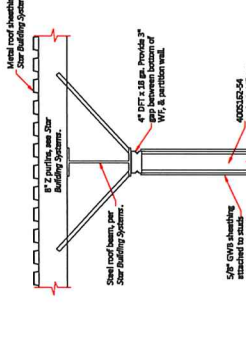
D Typical header detail
3/4" x 1 1/2"



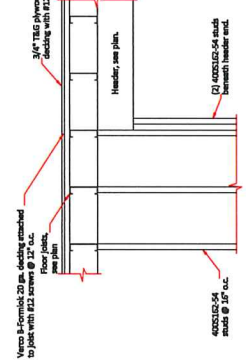
E Typical header to wall detail
3/4" x 1 1/2"



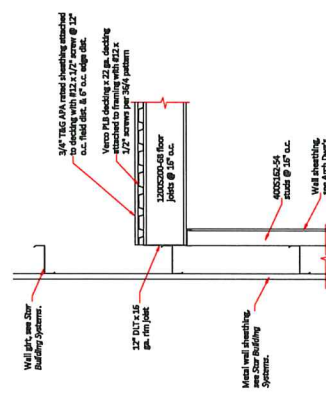
F Interior wall to steel roof beam detail
3/4" x 1 1/2"



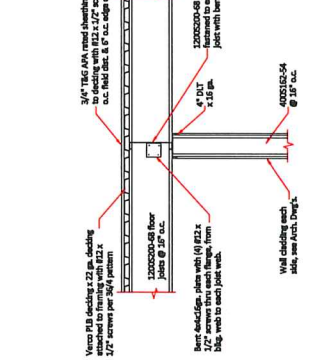
G Interior wall perp. to purlins detail
3/4" x 1 1/2"



H Floor joist to WF beam detail
3/4" x 1 1/2"



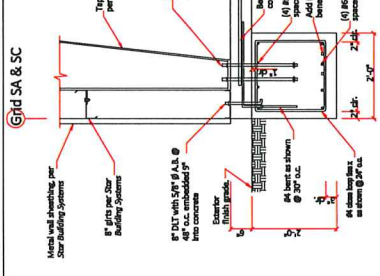
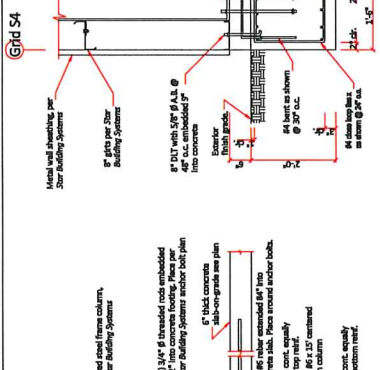
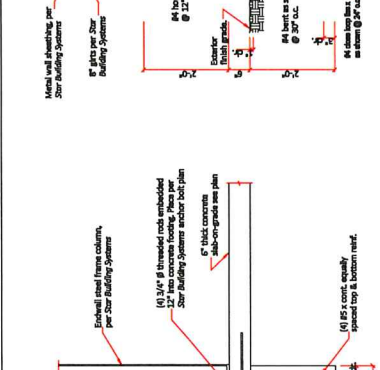
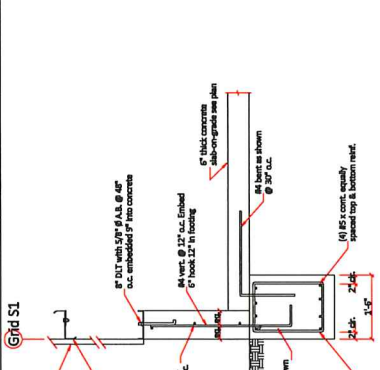
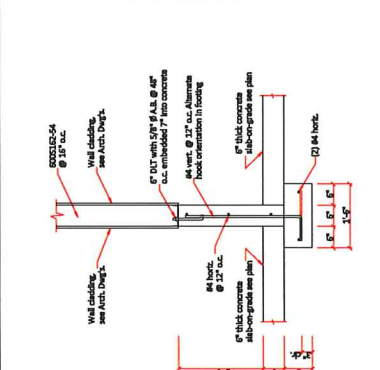
I Floor joists over bearing wall detail
3/4" x 1 1/2"



J Furred wall to exterior girt detail
3/4" x 1 1/2"



Electronically signed 6/23/2023



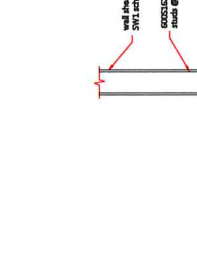
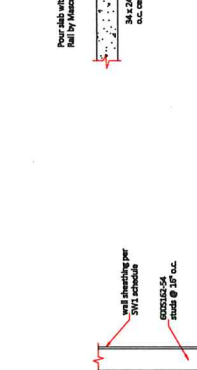
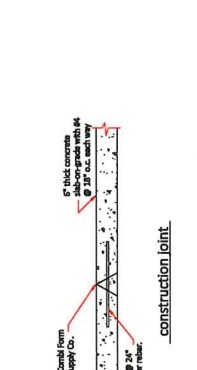
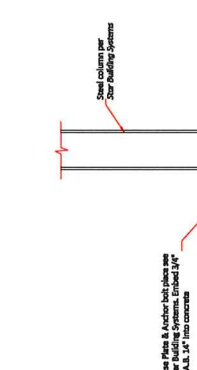
A Typical exterior foundation detail
 $3/4" \times 1'-0"$

B Typical exterior endwall foundation detail
 $3/4" \times 1'-0"$

C Typical exterior endwall foundation detail
 $3/4" \times 1'-0"$

D Interior concrete foundation detail
 $3/4" \times 1'-0"$

E Partition wall to concrete slab detail
 $3/4" \times 1'-0"$



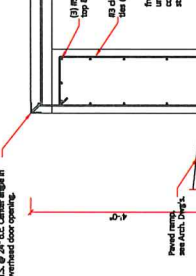
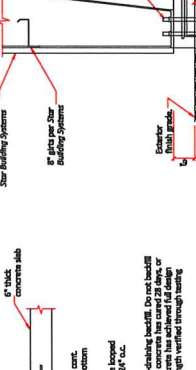
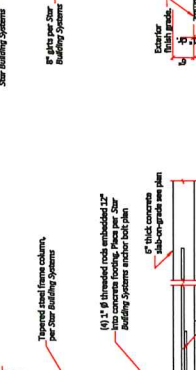
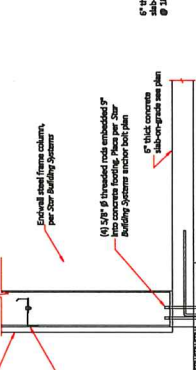
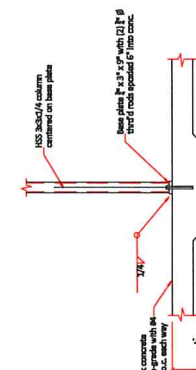
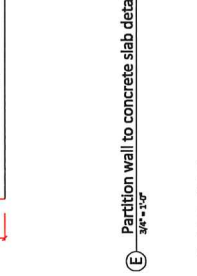
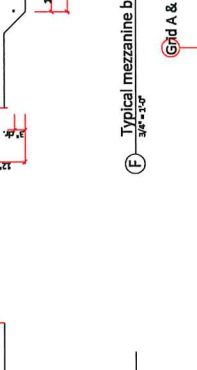
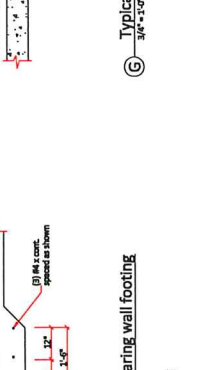
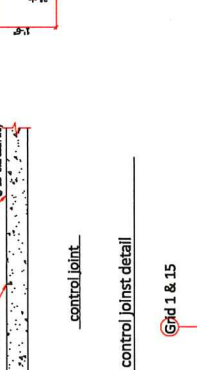
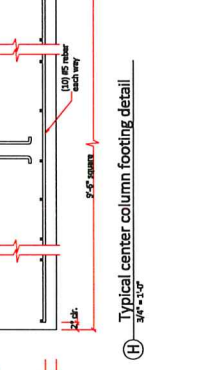
F Typical mezzanine bearing wall footing
 $3/4" \times 1'-0"$

G Typical control joint detail
 $3/4" \times 1'-0"$

H Typical center column footing detail
 $3/4" \times 1'-0"$

I Typical exterior endwall foundation detail
 $3/4" \times 1'-0"$

J Typical loading ramp foundation detail
 $3/4" \times 1'-0"$



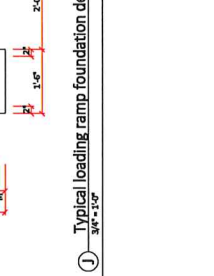
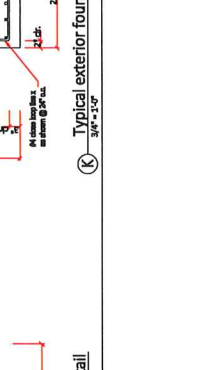
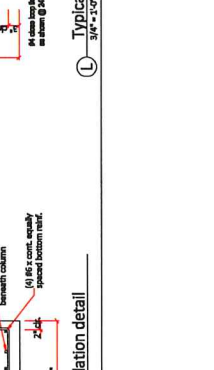
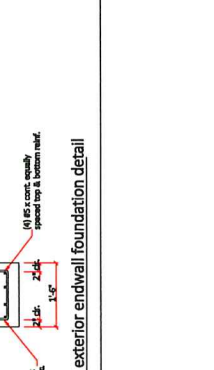
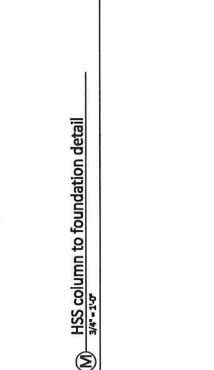
K Typical exterior foundation detail
 $3/4" \times 1'-0"$

L Typical exterior endwall foundation detail
 $3/4" \times 1'-0"$

M HSS column to foundation detail
 $3/4" \times 1'-0"$

N Typical exterior foundation detail
 $3/4" \times 1'-0"$

O Typical loading ramp foundation detail
 $3/4" \times 1'-0"$



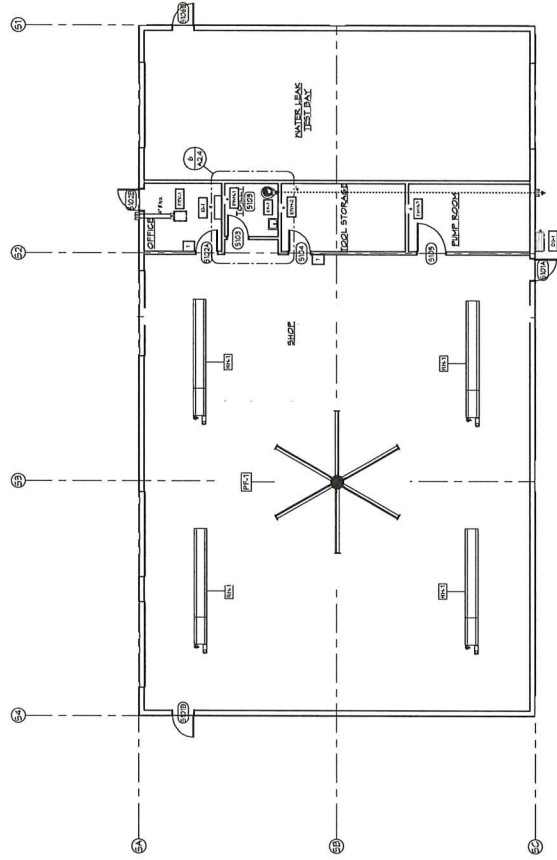
P Typical exterior foundation detail
 $3/4" \times 1'-0"$

Q Typical exterior endwall foundation detail
 $3/4" \times 1'-0"$

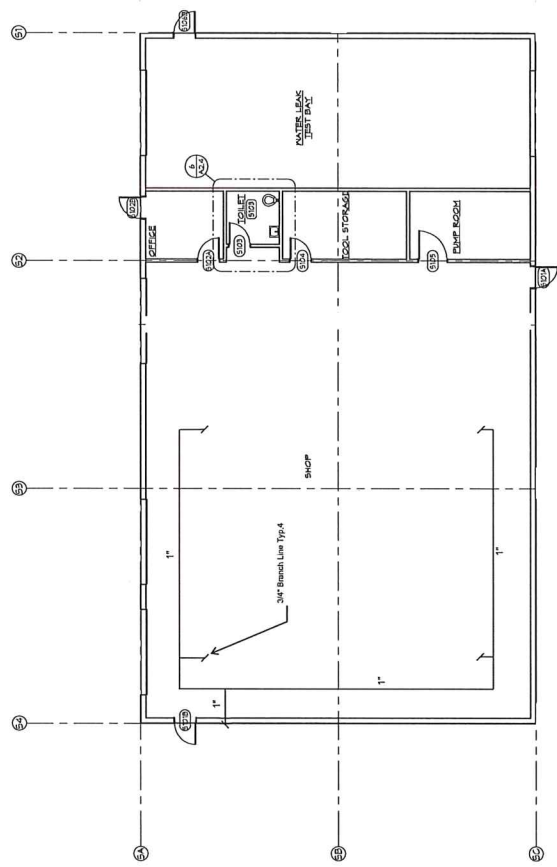
R HSS column to foundation detail
 $3/4" \times 1'-0"$

S Typical exterior foundation detail
 $3/4" \times 1'-0"$

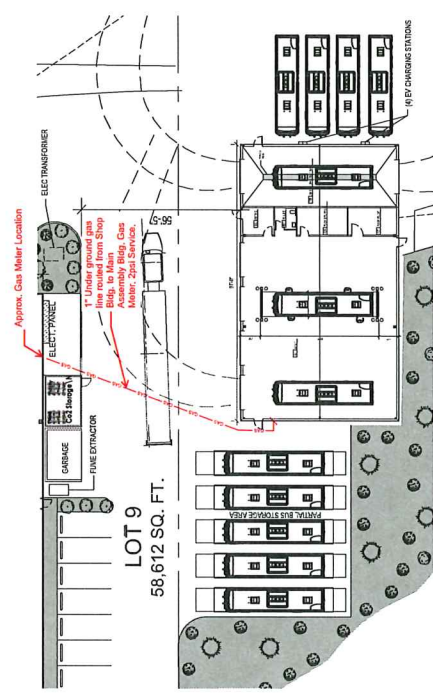
T Typical loading ramp foundation detail
 $3/4" \times 1'-0"$



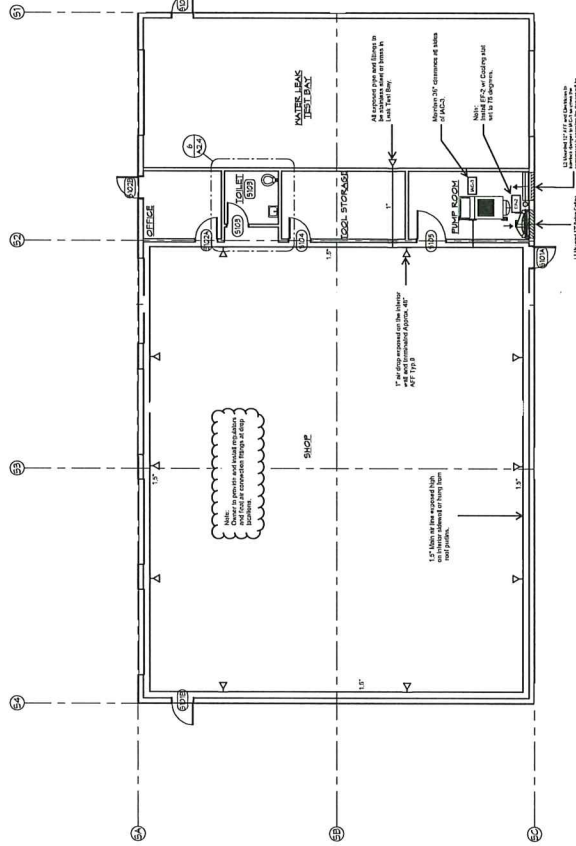
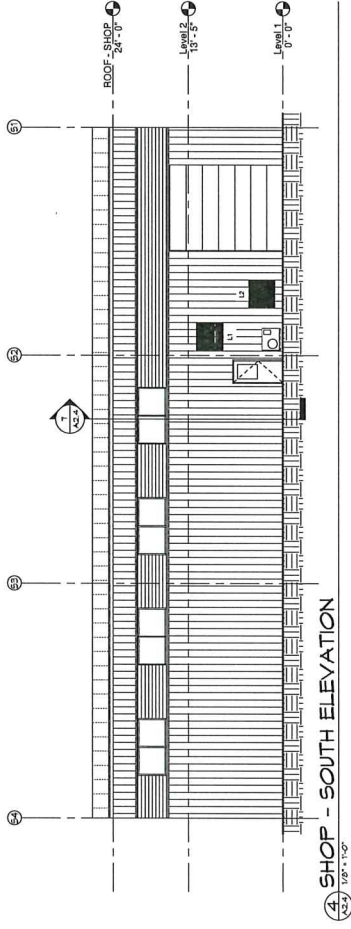
1 SHOP - HVAC Plan:
1/8" = 1'-0"



SHOP - Gas Piping Plan:
1/8" = 1'-0"

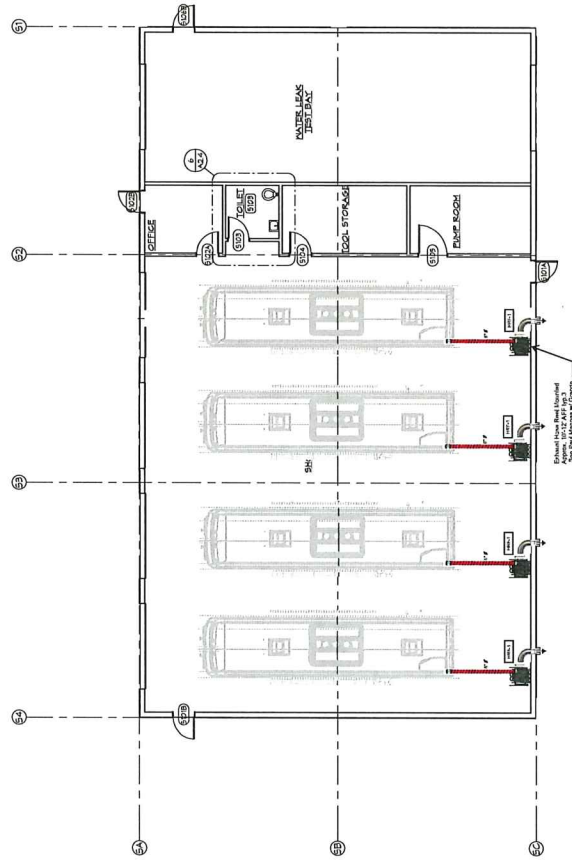


SHOP - Site Plan:
1/8" = 1'-0"



SHOP - Air Compressor Plan:

1/8" = 1'-0"



① SHOP - Exhaust Extraction System:
1/8" = 1'-0"

1000 WEST 10TH AVENUE, SUITE 200
DENVER, COLORADO 80202
TEL: 303.733.1111
WWW.DKINGARCHITECTURE.COM

THIS DOCUMENT IS THE PROPERTY OF DKING ARCHITECTURE. IT IS TO BE USED ONLY FOR THE PROJECT AND SITE SPECIFICALLY IDENTIFIED HEREIN. ANY REUSE OR REPRODUCTION OF THIS DOCUMENT WITHOUT THE WRITTEN PERMISSION OF DKING ARCHITECTURE IS STRICTLY PROHIBITED. THE USER ASSUMES ALL LIABILITY FOR THE USE OF THIS DOCUMENT. THE USER SHALL INDEMNIFY AND HOLD HARMLESS DKING ARCHITECTURE FROM AND AGAINST ALL CLAIMS, DAMAGES, LOSSES AND EXPENSES, INCLUDING REASONABLE ATTORNEY'S FEES, ARISING OUT OF OR RESULTING FROM THE USE OF THIS DOCUMENT.

DATE: 06/18/21
BY: [Signature]

PACIFIC FERN
BUSINESS PARK
GRANDE WEST



Electrical Consultants, Inc.
1000 WEST 10TH AVENUE, SUITE 200
DENVER, COLORADO 80202
TEL: 303.733.1111
WWW.ELECTRICALCONSULTANTS.COM

DESIGN
DEVELOPMENT

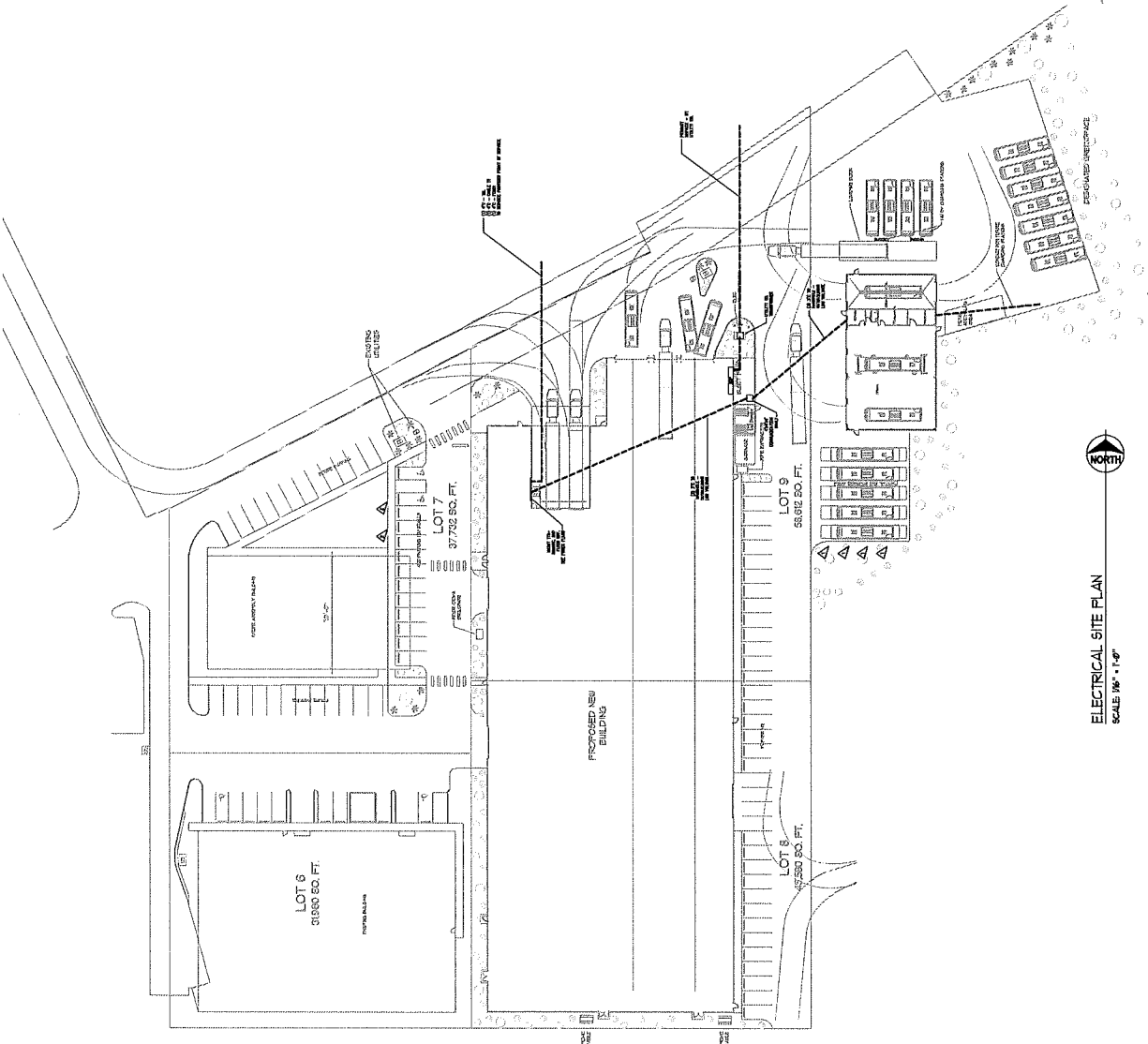
NO.	DATE	ISSUE

**ELECTRICAL
SITE PLAN**

E1.0

DETAIL NOTES

- ▷ ALL NEW ELECTRICAL WORK SHALL BE INSTALLED IN ACCORDANCE WITH THE 2017 NATIONAL ELECTRICAL CODE (NEC) AND THE 2015 IBC.
- ▷ ALL EXISTING ELECTRICAL WORK SHALL BE MAINTAINED UNLESS OTHERWISE NOTED.
- ▷ ALL ELECTRICAL WORK SHALL BE INSTALLED IN ACCORDANCE WITH THE 2017 NATIONAL ELECTRICAL CODE (NEC) AND THE 2015 IBC.
- ▷ ALL ELECTRICAL WORK SHALL BE INSTALLED IN ACCORDANCE WITH THE 2017 NATIONAL ELECTRICAL CODE (NEC) AND THE 2015 IBC.



ELECTRICAL SITE PLAN
SCALE 1/8" = 1'-0"

FINAL SET, 6/18/21

10000 1st Avenue, Suite 200
Seattle, WA 98101
Phone: 206.461.1111
Fax: 206.461.1112
www.dking.com

THIS DOCUMENT IS THE PROPERTY OF DKLING ARCHITECTURE. IT IS TO BE USED ONLY FOR THE PROJECT AND SITE SPECIFICALLY IDENTIFIED HEREIN. IT IS NOT TO BE REPRODUCED, COPIED, OR TRANSMITTED IN ANY FORM OR BY ANY MEANS, ELECTRONIC OR MECHANICAL, INCLUDING PHOTOCOPYING, RECORDING, OR BY ANY INFORMATION STORAGE AND RETRIEVAL SYSTEM, WITHOUT THE WRITTEN PERMISSION OF DKLING ARCHITECTURE.

DATE: 07/25/2021
BY: [Signature]

PACIFIC FERN
BUSINESS PARK
GRANDE WEST

Electrical Consultants, Inc.
10000 1st Avenue, Suite 200
Seattle, WA 98101
Phone: 206.461.1111

DESIGN
DEVELOPMENT

25 July 21

NO.	DATE	ISSUE

WASHINGTON
STATE
ENERGY CODE

NO.	DATE	ISSUE

E1.2

PRINT SET, 6/18/21

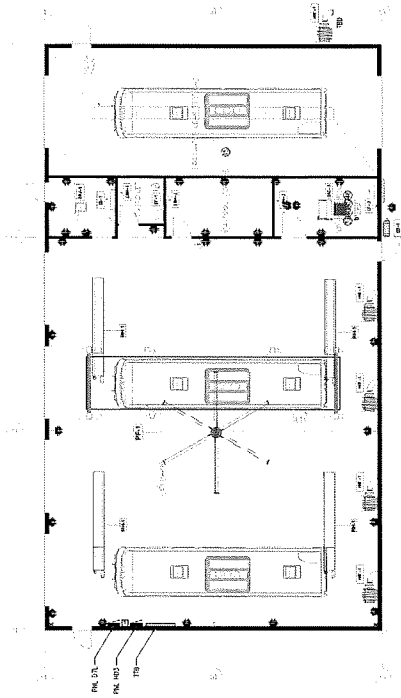
LIGHTING COMPLIANCE SUMMARY		PROJECT INFORMATION	
Project Name:	Pacific Fern Business Park, Grande West	Project No.:	2019-001
Client:	AWA	Design Phase:	Design Development
Location:	10000 1st Avenue, Suite 200, Seattle, WA 98101	Issue Date:	07/25/2021
Code:	Washington State Energy Code (WSEC)	Compliance Standard:	WSEC 2019
Designer:	DKING ARCHITECTURE	Checker:	[Signature]
Project Type:	Office Building	Area (sq ft):	100,000
Building Type:	Office Building	Number of Stories:	3
Occupancy Category:	Office	Number of Units:	0
Lighting System:	LED	Lighting System:	LED
Control System:	0-10V Dimming	Control System:	0-10V Dimming
Power Source:	120V AC	Power Source:	120V AC
Ballast Type:	Electronic	Ballast Type:	Electronic
Ballast Factor:	0.9	Ballast Factor:	0.9
Ballast Efficiency:	90%	Ballast Efficiency:	90%
Ballast Power Factor:	0.95	Ballast Power Factor:	0.95
Ballast Harmonic Distortion:	5%	Ballast Harmonic Distortion:	5%
Ballast Flicker:	0.5%	Ballast Flicker:	0.5%
Ballast Temperature:	50°C	Ballast Temperature:	50°C
Ballast Lifetime:	50,000 hours	Ballast Lifetime:	50,000 hours
Ballast Efficiency at 50°C:	85%	Ballast Efficiency at 50°C:	85%
Ballast Efficiency at 60°C:	80%	Ballast Efficiency at 60°C:	80%
Ballast Efficiency at 70°C:	75%	Ballast Efficiency at 70°C:	75%
Ballast Efficiency at 80°C:	70%	Ballast Efficiency at 80°C:	70%
Ballast Efficiency at 90°C:	65%	Ballast Efficiency at 90°C:	65%
Ballast Efficiency at 100°C:	60%	Ballast Efficiency at 100°C:	60%
Ballast Efficiency at 110°C:	55%	Ballast Efficiency at 110°C:	55%
Ballast Efficiency at 120°C:	50%	Ballast Efficiency at 120°C:	50%
Ballast Efficiency at 130°C:	45%	Ballast Efficiency at 130°C:	45%
Ballast Efficiency at 140°C:	40%	Ballast Efficiency at 140°C:	40%
Ballast Efficiency at 150°C:	35%	Ballast Efficiency at 150°C:	35%
Ballast Efficiency at 160°C:	30%	Ballast Efficiency at 160°C:	30%
Ballast Efficiency at 170°C:	25%	Ballast Efficiency at 170°C:	25%
Ballast Efficiency at 180°C:	20%	Ballast Efficiency at 180°C:	20%
Ballast Efficiency at 190°C:	15%	Ballast Efficiency at 190°C:	15%
Ballast Efficiency at 200°C:	10%	Ballast Efficiency at 200°C:	10%
Ballast Efficiency at 210°C:	5%	Ballast Efficiency at 210°C:	5%
Ballast Efficiency at 220°C:	0%	Ballast Efficiency at 220°C:	0%
Ballast Efficiency at 230°C:	0%	Ballast Efficiency at 230°C:	0%
Ballast Efficiency at 240°C:	0%	Ballast Efficiency at 240°C:	0%
Ballast Efficiency at 250°C:	0%	Ballast Efficiency at 250°C:	0%
Ballast Efficiency at 260°C:	0%	Ballast Efficiency at 260°C:	0%
Ballast Efficiency at 270°C:	0%	Ballast Efficiency at 270°C:	0%
Ballast Efficiency at 280°C:	0%	Ballast Efficiency at 280°C:	0%
Ballast Efficiency at 290°C:	0%	Ballast Efficiency at 290°C:	0%
Ballast Efficiency at 300°C:	0%	Ballast Efficiency at 300°C:	0%
Ballast Efficiency at 310°C:	0%	Ballast Efficiency at 310°C:	0%
Ballast Efficiency at 320°C:	0%	Ballast Efficiency at 320°C:	0%
Ballast Efficiency at 330°C:	0%	Ballast Efficiency at 330°C:	0%
Ballast Efficiency at 340°C:	0%	Ballast Efficiency at 340°C:	0%
Ballast Efficiency at 350°C:	0%	Ballast Efficiency at 350°C:	0%
Ballast Efficiency at 360°C:	0%	Ballast Efficiency at 360°C:	0%
Ballast Efficiency at 370°C:	0%	Ballast Efficiency at 370°C:	0%
Ballast Efficiency at 380°C:	0%	Ballast Efficiency at 380°C:	0%
Ballast Efficiency at 390°C:	0%	Ballast Efficiency at 390°C:	0%
Ballast Efficiency at 400°C:	0%	Ballast Efficiency at 400°C:	0%
Ballast Efficiency at 410°C:	0%	Ballast Efficiency at 410°C:	0%
Ballast Efficiency at 420°C:	0%	Ballast Efficiency at 420°C:	0%
Ballast Efficiency at 430°C:	0%	Ballast Efficiency at 430°C:	0%
Ballast Efficiency at 440°C:	0%	Ballast Efficiency at 440°C:	0%
Ballast Efficiency at 450°C:	0%	Ballast Efficiency at 450°C:	0%
Ballast Efficiency at 460°C:	0%	Ballast Efficiency at 460°C:	0%
Ballast Efficiency at 470°C:	0%	Ballast Efficiency at 470°C:	0%
Ballast Efficiency at 480°C:	0%	Ballast Efficiency at 480°C:	0%
Ballast Efficiency at 490°C:	0%	Ballast Efficiency at 490°C:	0%
Ballast Efficiency at 500°C:	0%	Ballast Efficiency at 500°C:	0%
Ballast Efficiency at 510°C:	0%	Ballast Efficiency at 510°C:	0%
Ballast Efficiency at 520°C:	0%	Ballast Efficiency at 520°C:	0%
Ballast Efficiency at 530°C:	0%	Ballast Efficiency at 530°C:	0%
Ballast Efficiency at 540°C:	0%	Ballast Efficiency at 540°C:	0%
Ballast Efficiency at 550°C:	0%	Ballast Efficiency at 550°C:	0%
Ballast Efficiency at 560°C:	0%	Ballast Efficiency at 560°C:	0%
Ballast Efficiency at 570°C:	0%	Ballast Efficiency at 570°C:	0%
Ballast Efficiency at 580°C:	0%	Ballast Efficiency at 580°C:	0%
Ballast Efficiency at 590°C:	0%	Ballast Efficiency at 590°C:	0%
Ballast Efficiency at 600°C:	0%	Ballast Efficiency at 600°C:	0%
Ballast Efficiency at 610°C:	0%	Ballast Efficiency at 610°C:	0%
Ballast Efficiency at 620°C:	0%	Ballast Efficiency at 620°C:	0%
Ballast Efficiency at 630°C:	0%	Ballast Efficiency at 630°C:	0%
Ballast Efficiency at 640°C:	0%	Ballast Efficiency at 640°C:	0%
Ballast Efficiency at 650°C:	0%	Ballast Efficiency at 650°C:	0%
Ballast Efficiency at 660°C:	0%	Ballast Efficiency at 660°C:	0%
Ballast Efficiency at 670°C:	0%	Ballast Efficiency at 670°C:	0%
Ballast Efficiency at 680°C:	0%	Ballast Efficiency at 680°C:	0%
Ballast Efficiency at 690°C:	0%	Ballast Efficiency at 690°C:	0%
Ballast Efficiency at 700°C:	0%	Ballast Efficiency at 700°C:	0%
Ballast Efficiency at 710°C:	0%	Ballast Efficiency at 710°C:	0%
Ballast Efficiency at 720°C:	0%	Ballast Efficiency at 720°C:	0%
Ballast Efficiency at 730°C:	0%	Ballast Efficiency at 730°C:	0%
Ballast Efficiency at 740°C:	0%	Ballast Efficiency at 740°C:	0%
Ballast Efficiency at 750°C:	0%	Ballast Efficiency at 750°C:	0%
Ballast Efficiency at 760°C:	0%	Ballast Efficiency at 760°C:	0%
Ballast Efficiency at 770°C:	0%	Ballast Efficiency at 770°C:	0%
Ballast Efficiency at 780°C:	0%	Ballast Efficiency at 780°C:	0%
Ballast Efficiency at 790°C:	0%	Ballast Efficiency at 790°C:	0%
Ballast Efficiency at 800°C:	0%	Ballast Efficiency at 800°C:	0%
Ballast Efficiency at 810°C:	0%	Ballast Efficiency at 810°C:	0%
Ballast Efficiency at 820°C:	0%	Ballast Efficiency at 820°C:	0%
Ballast Efficiency at 830°C:	0%	Ballast Efficiency at 830°C:	0%
Ballast Efficiency at 840°C:	0%	Ballast Efficiency at 840°C:	0%
Ballast Efficiency at 850°C:	0%	Ballast Efficiency at 850°C:	0%
Ballast Efficiency at 860°C:	0%	Ballast Efficiency at 860°C:	0%
Ballast Efficiency at 870°C:	0%	Ballast Efficiency at 870°C:	0%
Ballast Efficiency at 880°C:	0%	Ballast Efficiency at 880°C:	0%
Ballast Efficiency at 890°C:	0%	Ballast Efficiency at 890°C:	0%
Ballast Efficiency at 900°C:	0%	Ballast Efficiency at 900°C:	0%
Ballast Efficiency at 910°C:	0%	Ballast Efficiency at 910°C:	0%
Ballast Efficiency at 920°C:	0%	Ballast Efficiency at 920°C:	0%
Ballast Efficiency at 930°C:	0%	Ballast Efficiency at 930°C:	0%
Ballast Efficiency at 940°C:	0%	Ballast Efficiency at 940°C:	0%
Ballast Efficiency at 950°C:	0%	Ballast Efficiency at 950°C:	0%
Ballast Efficiency at 960°C:	0%	Ballast Efficiency at 960°C:	0%
Ballast Efficiency at 970°C:	0%	Ballast Efficiency at 970°C:	0%
Ballast Efficiency at 980°C:	0%	Ballast Efficiency at 980°C:	0%
Ballast Efficiency at 990°C:	0%	Ballast Efficiency at 990°C:	0%
Ballast Efficiency at 1000°C:	0%	Ballast Efficiency at 1000°C:	0%

WASHINGTON STATE ENERGY CODE
SCALE: NONE

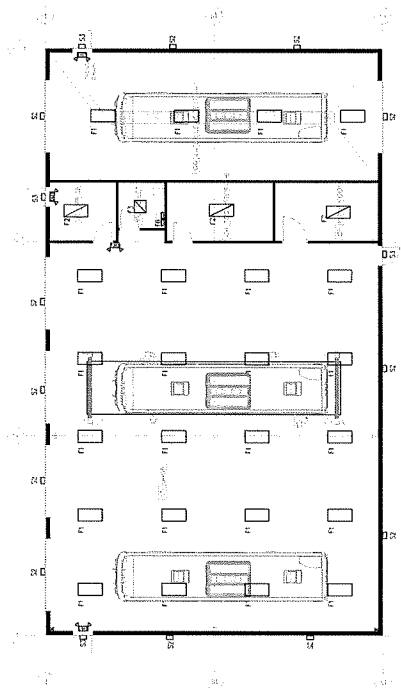
NO.	DATE	ISSUE

**ELECTRICAL
 PLAN -
 OUT
 BUILDING**

PERMIT SET 6/21



POWER PLAN - OUTBUILDING
 SCALE 1/8" = 1'-0"



LIGHTING PLAN - OUTBUILDING
 SCALE 1/8" = 1'-0"